

021580

87 PAGE 49

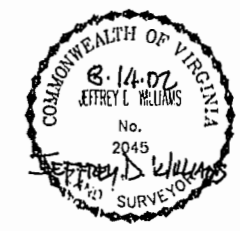
EXHIBIT B-13
SUPPLEMENTAL CONDOMINIUM PLAT
OF
WYNHAM PLANTATION
CONDOMINIUM

WILLIAMSBURG, VIRGINIA
SCALE: 1"=100' AUGUST 14, 2002

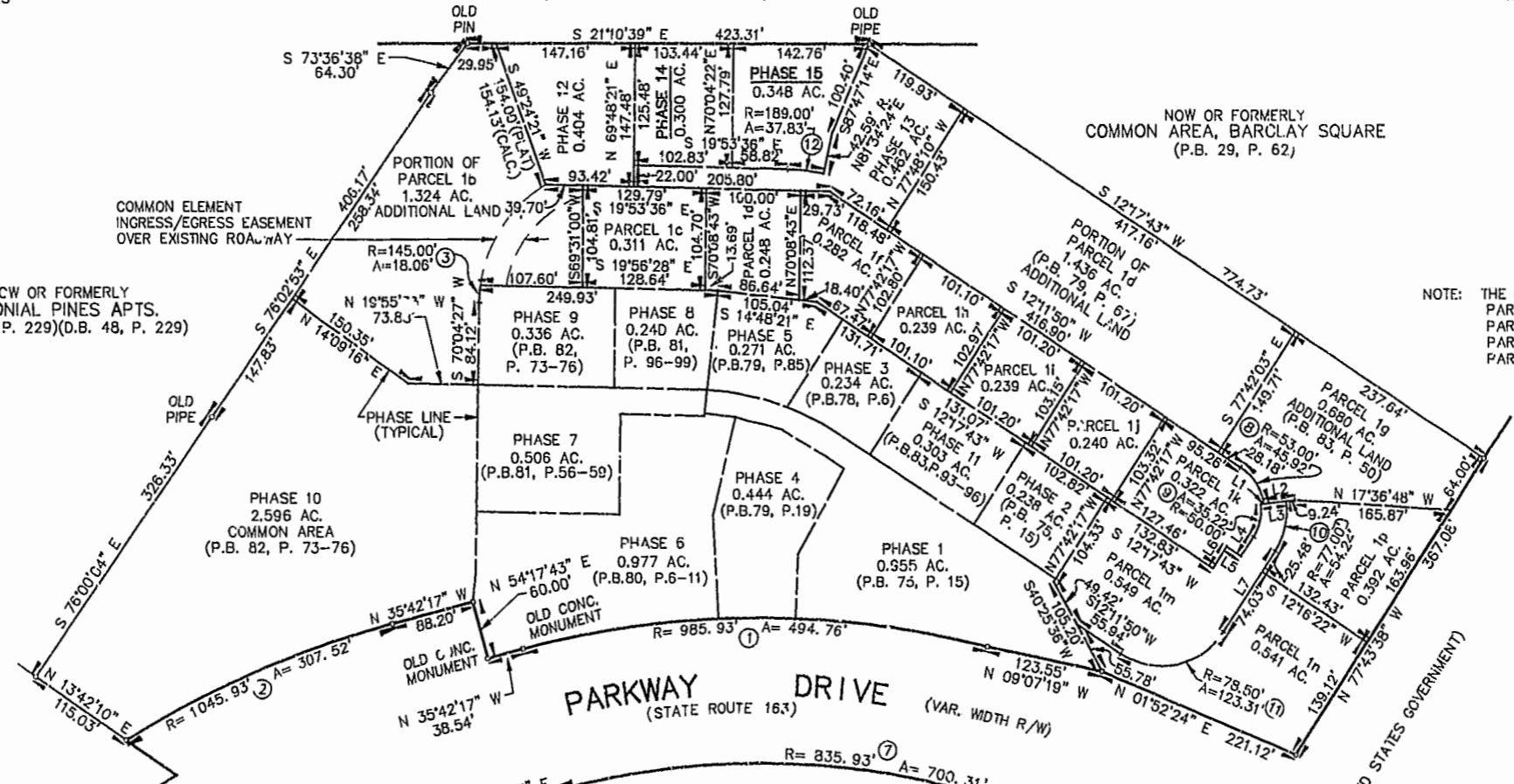
JOHN E. SIRINE AND ASSOCIATES, LTD.
SURVEYORS • ENGINEERS • PLANNERS
VIRGINIA BEACH, VIRGINIA
(757) 486-4910

THE UNDERSIGNED CERTIFIES THAT THESE PLATS ARE ACCURATE AND COMPLY WITH THE PROVISIONS OF CODE OF VIRGINIA, SECTION 55-79.58.A AND THAT ALL UNITS OR PORTIONS THEREOF DEPICTED HEREON AND ALL COMMON ELEMENTS HAVE BEEN SUBSTANTIALLY COMPLETED, UNLESS OTHERWISE NOTED.

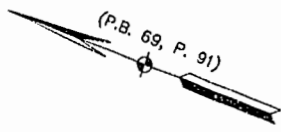
SIGNED: Jeffrey D. Williams
JEFFREY D. WILLIAMS, L.S.



MERRIMAC TRAIL
(STATE ROUTE 143)
(FORMERLY STATE ROUTE 168)



NOTE: THE FOLLOWING PARCELS ARE ADDITIONAL LAND.
PARCEL 1b PARCEL 1h PARCEL 1m
PARCEL 1c PARCEL 1i PARCEL 1n
PARCEL 1d PARCEL 1j PARCEL 1p
PARCEL 1f PARCEL 1k

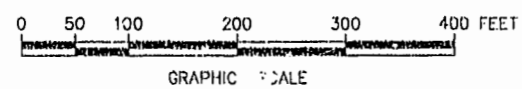


PARKWAY DRIVE
(STATE ROUTE 163)

COLONIAL PARKWAY

LINE DATA		
NO.	BEARING	DISTANCE
L1	N 28°09'33" W	3.00'
L2	N 28°09'33" W	33.24'
L3	N 28°09'33" W	27.00'
L4	S 77°48'10" E	23.89'
L5	S 12°11'50" W	17.97'
L6	S 77°48'10" E	26.65'
L7	S 77°48'10" E	99.51'

CURVE DATA						
NO.	RADIUS	DELTA	ARC	TANGENT	CHORD	CHORD BEARING
1	985.93'	28°45'07"	494.76'	252.70'	489.58'	N 21°19'43" W
2	1045.93'	16°50'46"	307.52'	154.88'	306.42'	N 44°07'40" W
3	145.00'	07°03'15"	18.06'	9.04'	18.05'	N 73°38'34" E
6	835.93'	08°16'51"	120.82'	60.51'	120.71'	S 39°50'42" E
7	835.93'	48°00'00"	700.31'	372.18'	680.01'	S 11°42'18" E
8	53.00'	49°38'37"	45.92'	24.51'	44.50'	N 37°01'09" E
9	50.00'	40°21'23"	35.22'	18.37'	34.49'	N 82°01'09" E
10	77.00'	40°21'23"	54.24'	28.30'	53.12'	N 82°01'09" E
11	78.50'	90°00'00"	123.31'	78.50'	111.02'	S 32°48'10" E
12	189.00'	11°28'00"	37.83'	18.98'	37.76'	S 14°00'36" E



City of Williamsburg & County of James City
Circuit Court: This PLAT was recorded on
29 Aug. 2002
at 8:55 AM/PM, PB 87 PG 49-54
DOCUMENT # 021580
Cathy S. Woodridge Dep. Clerk

#021580

87 PAGE 50

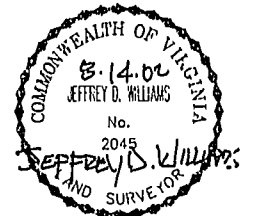
EXHIBIT B-13
SUPPLEMENTAL CONDOMINIUM PLAT
OF
WYNDHAM PLANTATION
CONDOMINIUM

WILLIAMSBURG, VIRGINIA
SCALE: 1"=20' AUGUST 14, 2002

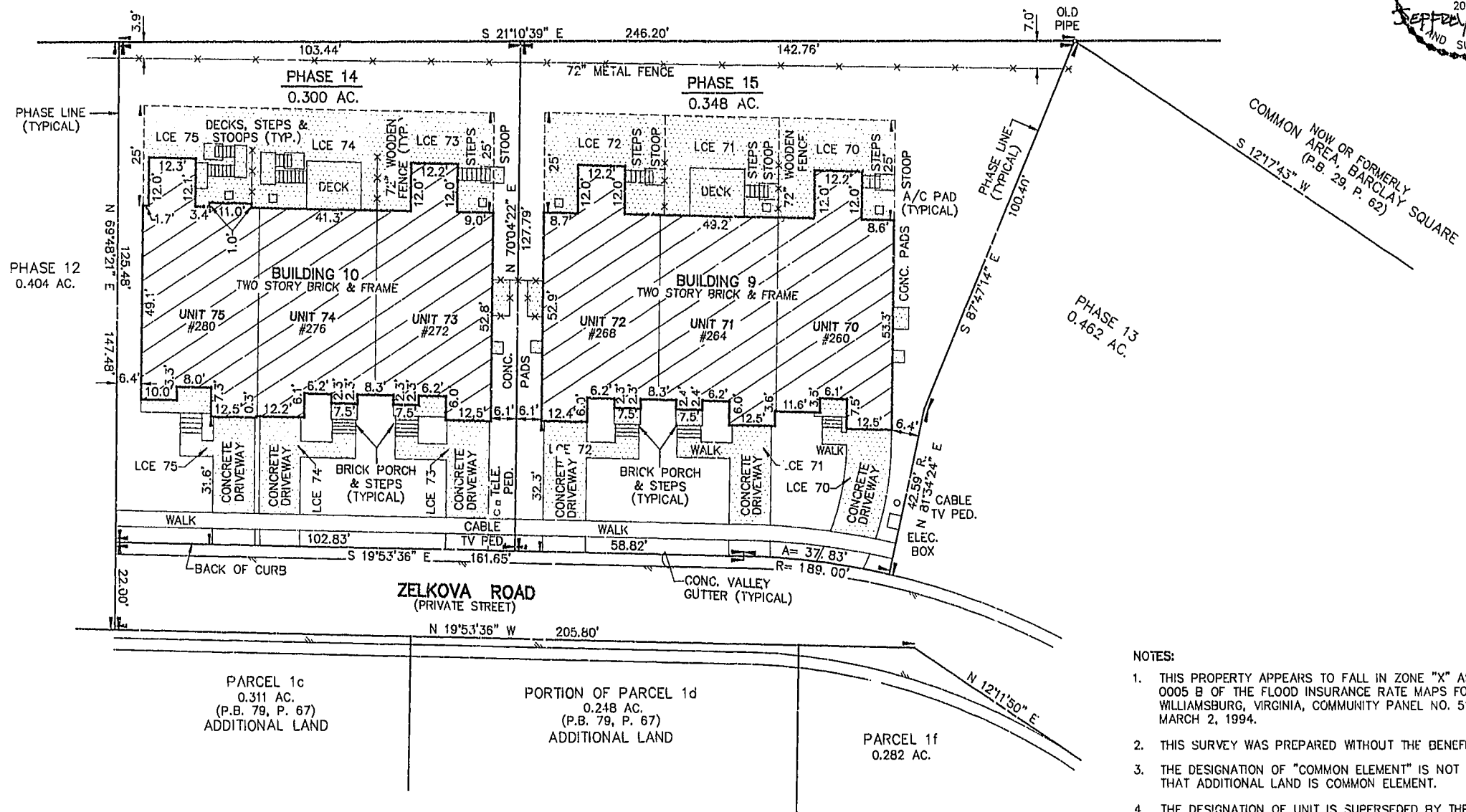
JOHN E. SIRINE AND ASSOCIATES, LTD.
SURVEYORS • ENGINEERS • PLANNERS
VIRGINIA BEACH, VIRGINIA
(757) 486-4910

THE UNDERSIGNED CERTIFIES THAT THESE PLATS ARE ACCURATE AND COMPLY WITH THE PROVISIONS OF CODE OF VIRGINIA, SECTION 55-79.58.A AND THAT ALL UNITS OR PORTIONS THEREOF DEPICTED HEREON AND ALL COMMON ELEMENTS HAVE BEEN SUBSTANTIALLY COMPLETED.

SIGNED: JEFFREY D. WILLIAMS
JEFFREY D. WILLIAMS, L.S.

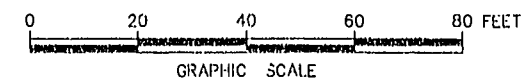


MERRIMAC TRAIL
(STATE ROUTE 143)
(FORMERLY STATE ROUTE 168)



LEGEND

- UNIT AREA
- LIMITED COMMON ELEMENT TO THE UNIT INDICATED (LCE)
- COMMON ELEMENT
- ADDRESS



City of Williamsburg & County of James City
Circuit Court: This PLAT was recorded on
29 Aug 2002
at 8:55 AM PM, PB 87 PG 10-54
DOCUMENT # 021580
BETTY B. WOOLDRIDGE, CLERK
Jeffrey D. Williams Dep. Clerk

NOTES:

1. THIS PROPERTY APPEARS TO FALL IN ZONE "X" AS SHOWN ON PANEL 0005 B OF THE FLOOD INSURANCE RATE MAPS FOR THE CITY OF WILLIAMSBURG, VIRGINIA, COMMUNITY PANEL NO. 510294, DATED MARCH 2, 1994.
2. THIS SURVEY WAS PREPARED WITHOUT THE BENEFIT OF A TITLE REPORT.
3. THE DESIGNATION OF "COMMON ELEMENT" IS NOT INTENDED TO IMPLY THAT ADDITIONAL LAND IS COMMON ELEMENT.
4. THE DESIGNATION OF UNIT IS SUPERSEDED BY THE DEFINITION OF UNIT IN THE DECLARATION AND IS NOT INTENDED TO IMPLY THAT COMMON ELEMENTS ARE UNIT AREA.
5. ALL BUILDING DIMENSIONS AS SHOWN ON THIS SHEET ARE EXTERIOR DIMENSIONS AND WERE OBTAINED BY A FIELD SURVEY ON 7/29/02.
6. THIS PROPERTY IS SUBJECT TO A NON-EXCLUSIVE EASEMENT FOR INGRESS AND EGRESS TO AND THE RIGHT TO THE USE AND ENJOYMENT OF SEWER, WATER AND STORMWATER FACILITIES AS OUTLINED IN DEED RECORDED BY INSTRUMENT NO. 990092 (CITY OF WILLIAMSBURG, JAMES CITY COUNTY, VIRGINIA).
7. PROPERTY IS SUBJECT TO THE FOLLOWING EASEMENTS:
A.) VARIABLE WIDTH VIRGINIA ELECTRIC AND POWER COMPANY EASEMENT (INSTR. # 990544)
B.) 10' BELL ATLANTIC EASEMENT (INSTR. # 9801390)

SHEET 2 OF 6

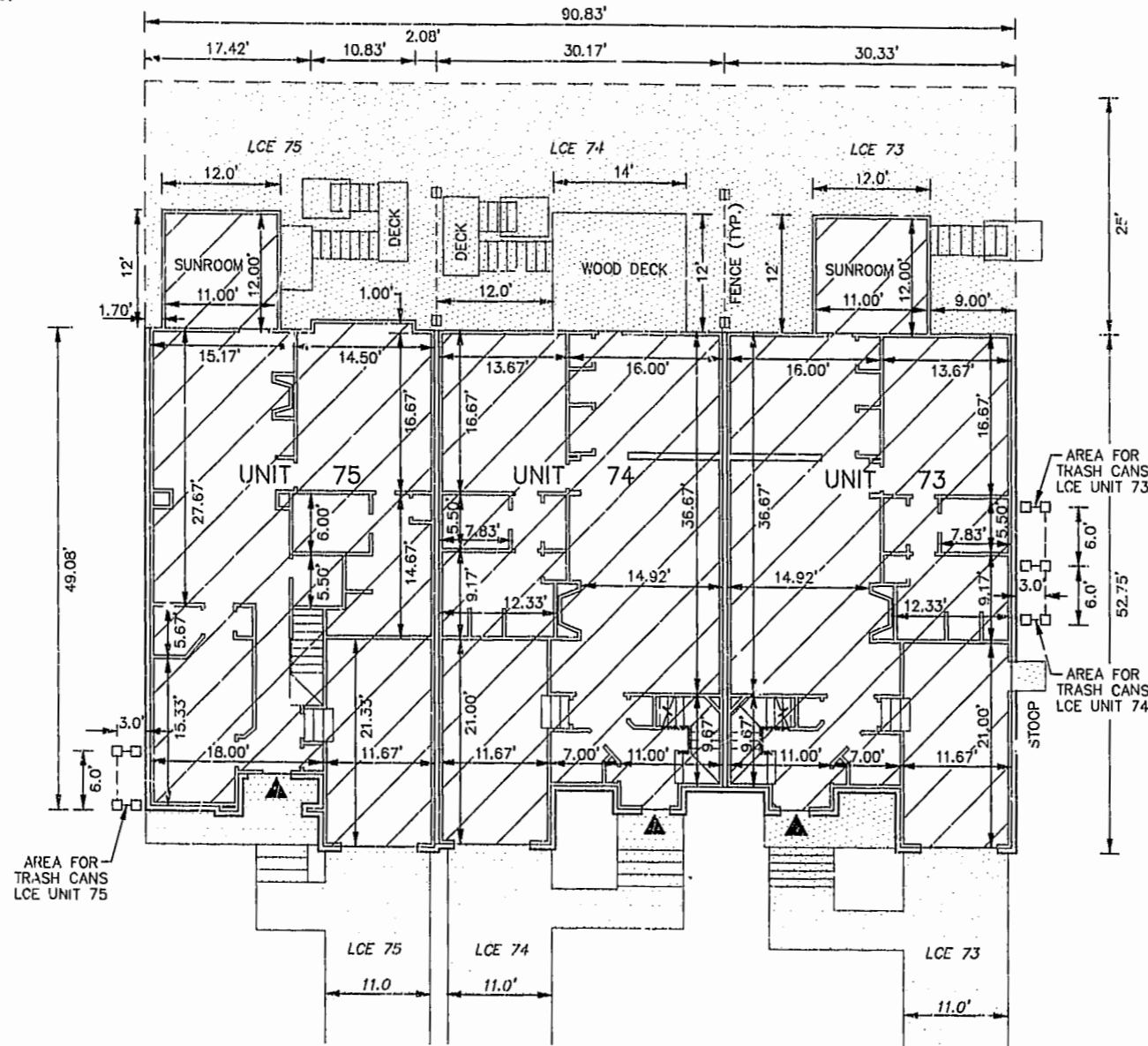
EXHIBIT B-13
SUPPLEMENTAL CONDOMINIUM PLAN
OF
WYNDHAM PLANTATION
CONDOMINIUM

WILLIAMSBURG, VIRGINIA
SCALE: 1"=10' AUGUST 14, 2002

JOHN E. SIRINE AND ASSOCIATES, LTD.
SURVEYORS • ENGINEERS • PLANNERS
VIRGINIA BEACH, VIRGINIA
(757) 486-4910

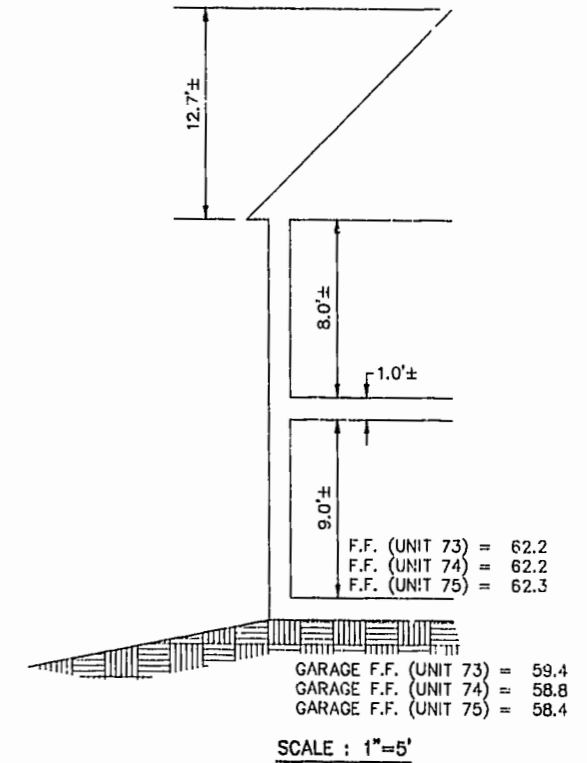
FIRST FLOOR - BUILDING 10

SCALE: 1"=10'



NOTES:

1. BUILDING DIMENSIONS SHOWN HEREON ARE INTERIOR DIMENSIONS. THESE DIMENSIONS ARE IN FEET AND WERE TAKEN FROM PLANS SUPPLIED ENTITLED "WYNDHAM PLANTATION AT WILLIAMSBURG, FLOOR PLANS" BY PROGRESSIVE DESIGNS DATED 11/19/98.
2. INTERIOR UNIT CONFIGURATIONS AND PARTITIONS AS DEPICTED HEREON ARE FOR THE PURPOSE OF ILLUSTRATION ONLY AND MAY NOT REPRESENT THE INTERIOR OF A UNIT AS ACTUALLY CONSTRUCTED.

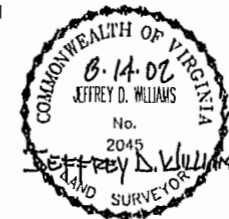


- UNIT AREA
- LIMITED COMMON ELEMENT TO THE UNIT INDICATED (LCE)
- INDICATES FRONT ENTRANCE TO UNIT

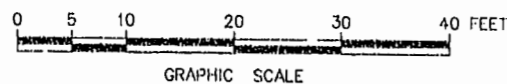
PHASE	UNIT No.	UNIT ADDRESS	UNIT AREA
14	73	272 ZELKOVA ROAD	2,101 S.F.
14	74	276 ZELKOVA ROAD	1,957 S.F.
14	75	280 ZELKOVA ROAD	2,141 S.F.

THE UNDERSIGNED CERTIFIES THAT THESE PLANS ARE ACCURATE AND COMPLY WITH THE PROVISIONS OF CODE OF VIRGINIA, SECTION 55-79.5B.B AND THAT ALL UNITS OR PORTIONS THEREOF DEPICTED HEREON AND ALL COMMON ELEMENTS HAVE BEEN SUBSTANTIALLY COMPLETED.

SIGNED: Jeffrey D. Williams
JEFFREY D. WILLIAMS, L.S.



City of Williamsburg & County of James City
Circuit Court: This PLAT was recorded on
29 Aug. 2002
at 8:55 AM/PM, PG. 87 PG. 49-54
DOCUMENT # 021580
Betsy B. Woolridge CLERK
Betsy B. Woolridge Dep. Clerk



#021580

87 PAGE 52

EXHIBIT B-13
SUPPLEMENTAL CONDOMINIUM PLAN
OF
WYNDHAM PLANTATION
CONDOMINIUM

WILLIAMSBURG, VIRGINIA
SCALE: 1"=10' AUGUST 14, 2002

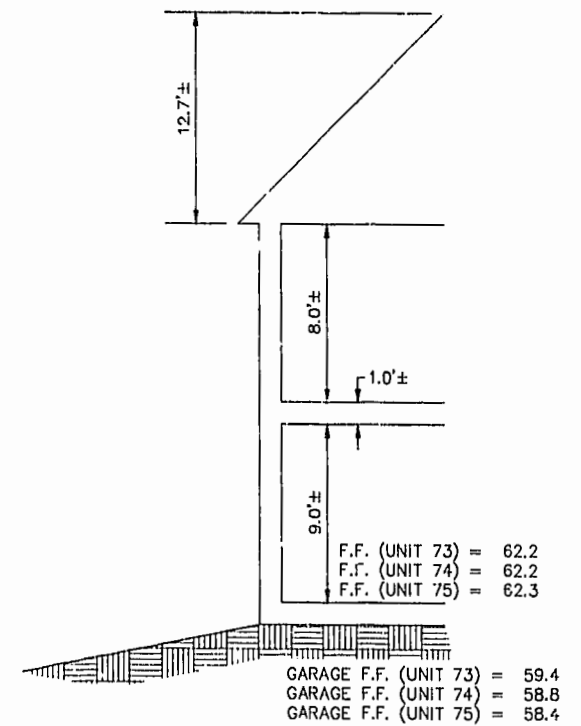
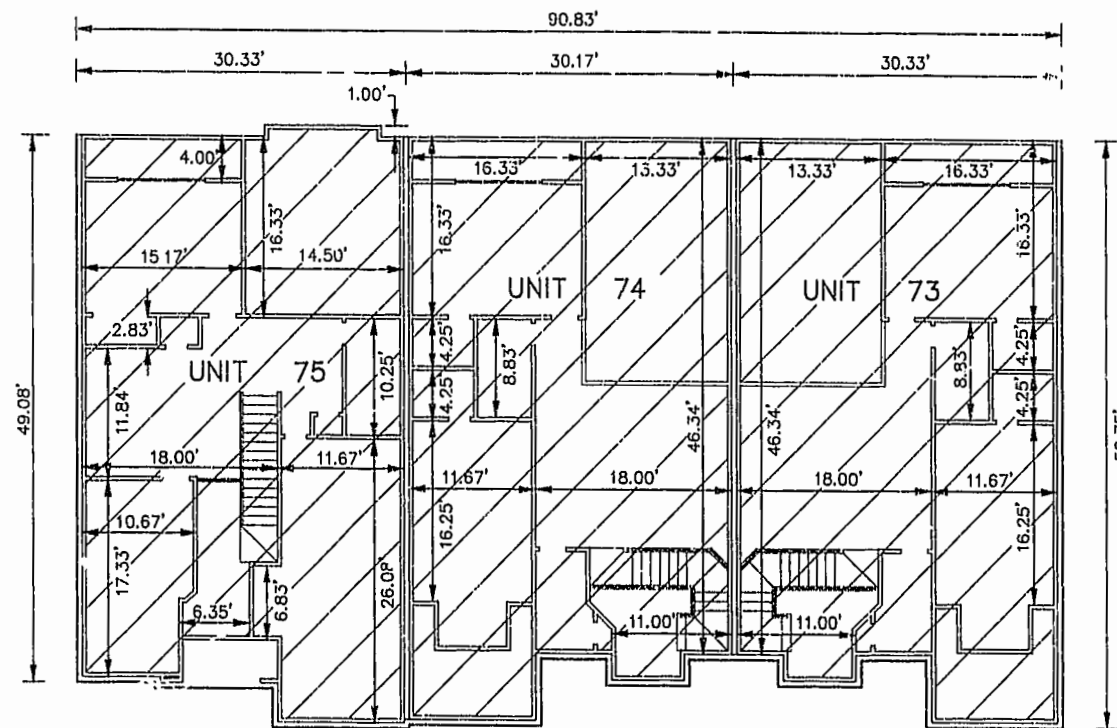
JOHN E. SIRINE AND ASSOCIATES, LTD.
SURVEYORS • ENGINEERS • PLANNERS
VIRGINIA BEACH, VIRGINIA
(757) 486-4910

NOTES:

1. BUILDING DIMENSIONS SHOWN HEREON ARE INTERIOR DIMENSIONS. THESE DIMENSIONS ARE IN FEET AND WERE TAKEN FROM PLANS SUPPLIED ENTITLED "WYNDHAM PLANTATION AT WILLIAMSBURG, FLOOR PLANS" BY PROGRESSIVE DESIGNS DATED 11/19/98.
2. INTERIOR UNIT CONFIGURATIONS AND PARTITIONS AS DEPICTED HEREON ARE FOR THE PURPOSE OF ILLUSTRATION ONLY AND MAY NOT REPRESENT THE INTERIOR OF A UNIT AS ACTUALLY CONSTRUCTED.

SECOND FLOOR - BUILDING 10

SCALE: 1"=10'



SCALE: 1"=5'

UNIT AREA

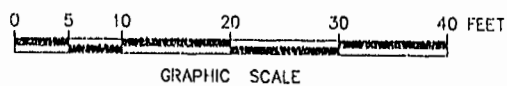
THE UNDERSIGNED CERTIFIES THAT THESE PLANS ARE ACCURATE AND COMPLY WITH THE PROVISIONS OF CODE OF VIRGINIA, SECTION 55-79.58.B AND THAT ALL UNITS OR PORTIONS THEREOF DEPICTED HEREON AND ALL COMMON ELEMENTS HAVE BEEN SUBSTANTIALLY COMPLETED.

PHASE	UNIT No.	UNIT ADDRESS	UNIT AREA
14	73	272 ZELKOVA ROAD	2,101 S.F.
14	74	276 ZELKOVA ROAD	1,957 S.F.
14	75	280 ZELKOVA ROAD	2,141 S.F.

SIGNED: Jeffrey D. Williams
JEFFREY D. WILLIAMS, L.S.



City of Williamsburg & County of James City
Circuit Court: This PLAT was recorded on
29 Aug 2002
at 8:55 AM/PTB 87 PG 49-54
DOCUMENT # 22,1580
RETSY B. WOOLRIDGE, CLERK
Cathy S. Woolridge Dep. Clerk



GRAPHIC SCALE

EXHIBIT B-13
SUPPLEMENTAL CONDOMINIUM PLAN
OF
WYNDHAM PLANTATION
CONDOMINIUM

WILLIAMSBURG, VIRGINIA
SCALE: 1"=10' AUGUST 14, 2002

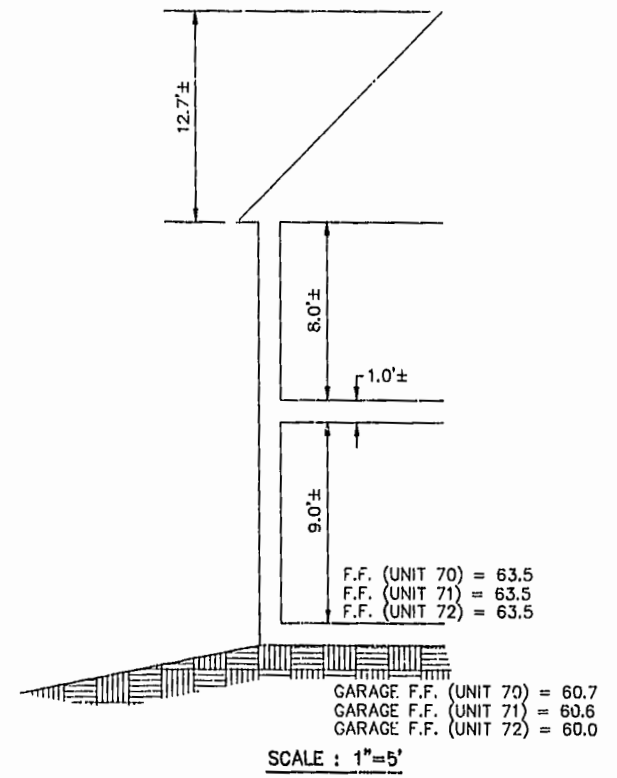
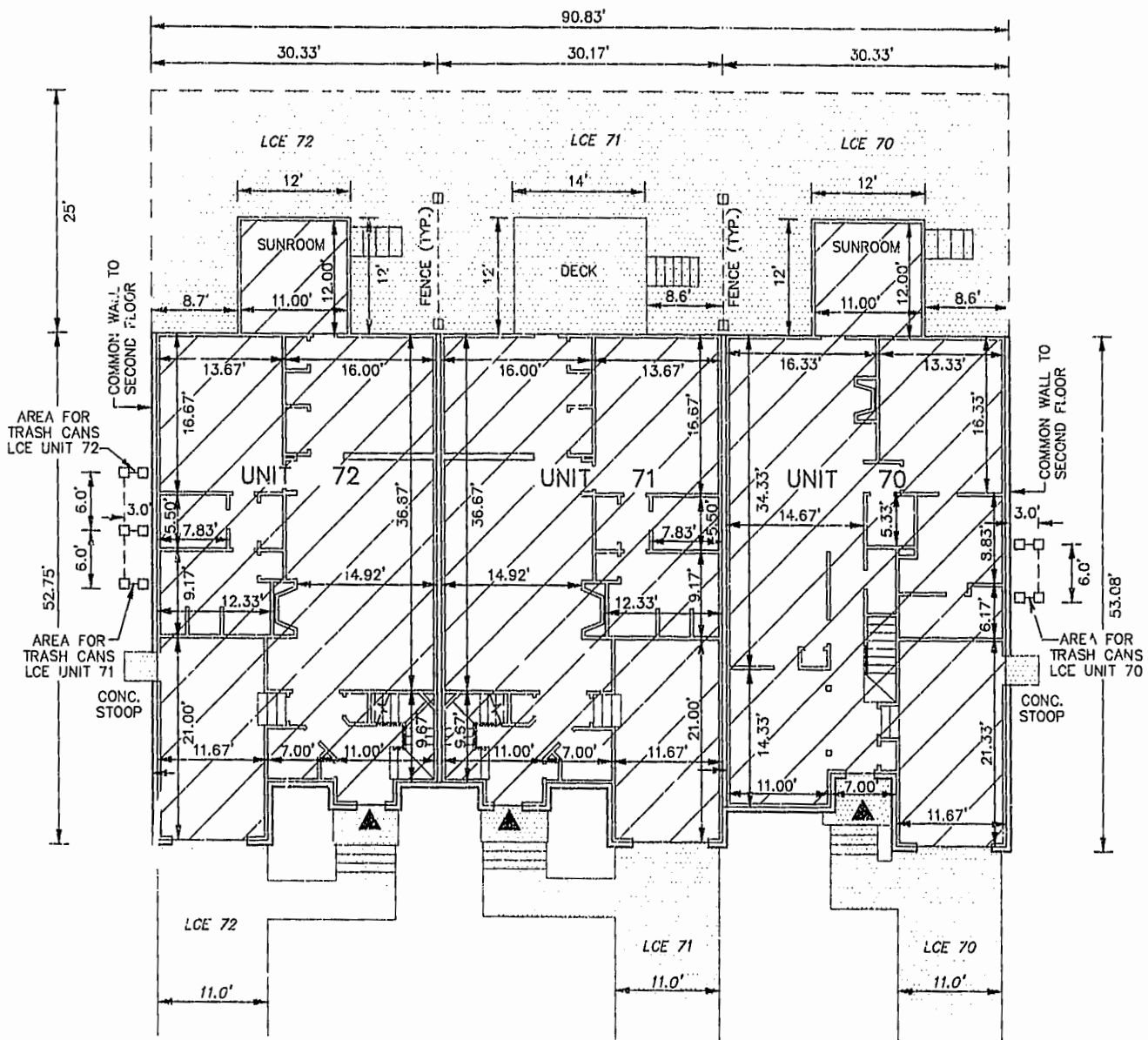
JOHN E. SIRINE AND ASSOCIATES, LTD.
SURVEYORS • ENGINEERS • PLANNERS
VIRGINIA BEACH, VIRGINIA
(757) 486-4910

NOTES:

- BUILDING DIMENSIONS SHOWN HEREON ARE INTERIOR DIMENSIONS. THESE DIMENSIONS ARE IN FEET AND WERE TAKEN FROM PLANS SUPPLIED ENTITLED "WYNDHAM PLANTATION AT WILLIAMSBURG, FLOOR PLANS" BY PROGRESSIVE DESIGNS DATED 11/19/98.
- INTERIOR UNIT CONFIGURATIONS AND PARTITIONS AS DEPICTED HEREON ARE FOR THE PURPOSE OF ILLUSTRATION ONLY AND MAY NOT REPRESENT THE INTERIOR OF A UNIT AS ACTUALLY CONSTRUCTED.

FIRST FLOOR - BUILDING 9

SCALE: 1"=10'

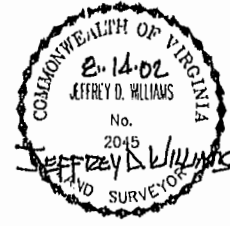


SCALE: 1"=5'

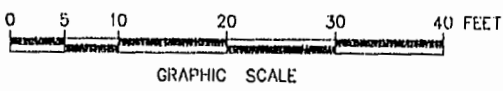
PHASE	UNIT No.	UNIT ADDRESS	UNIT AREA
15	70	260 ZELKOVA ROAD	1,997 S.F.
15	71	264 ZELKOVA ROAD	1,957 S.F.
15	72	268 ZELKOVA ROAD	2,101 S.F.

THE UNDERSIGNED CERTIFIES THAT THESE PLANS ARE ACCURATE AND COMPLY WITH THE PROVISIONS OF CODE OF VIRGINIA, SECTION 55-79.5B.B AND THAT ALL UNITS OR PORTIONS THEREOF DEPICTED HEREON AND ALL COMMON ELEMENTS HAVE BEEN SUBSTANTIALLY COMPLETED, UNLESS OTHERWISE NOTED.

SIGNED: Jeffrey D. Williams
JEFFREY D. WILLIAMS, L.S.



City of Williamsburg & County of James City
Circuit Court: This PLAT was recorded on
20 Aug 2002
at 8:55 AM in PB 87, PG 49-54
DOCUMENT # 021580
Patsy B. Woodridge, Clerk



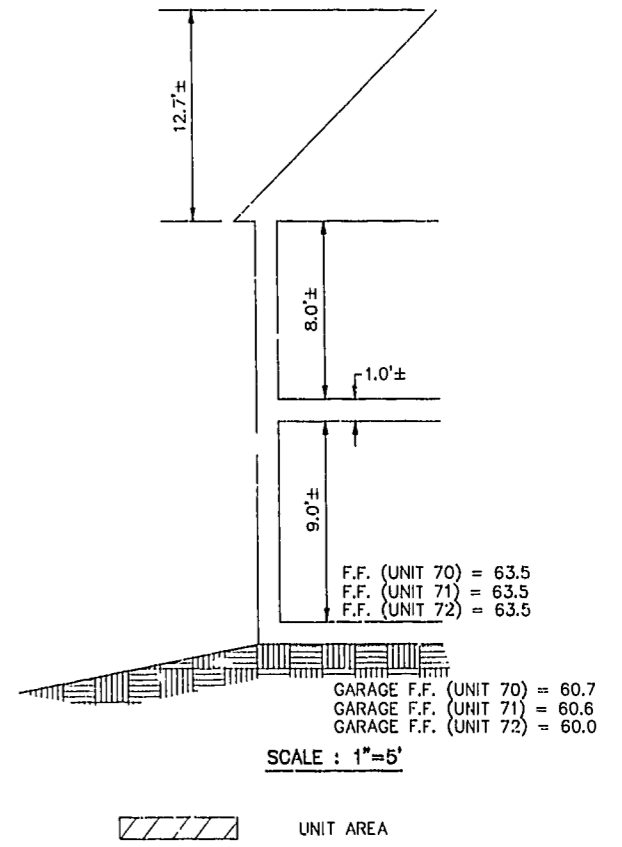
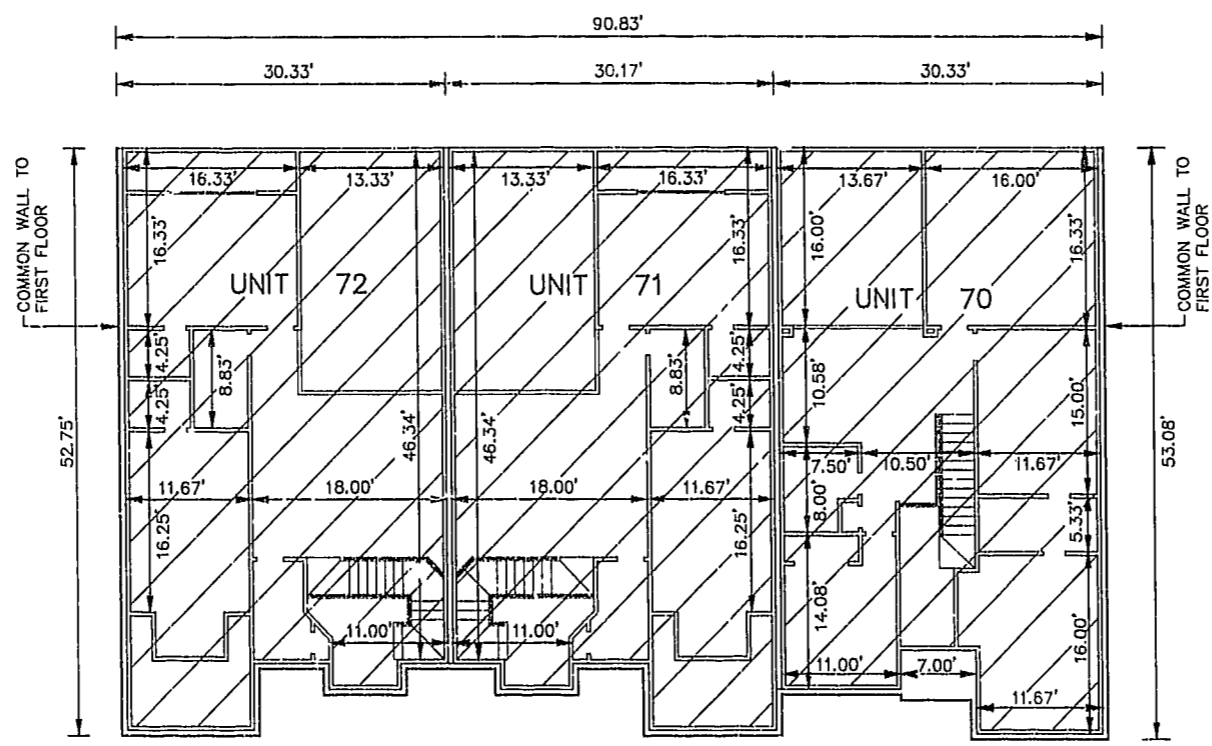
#021580

87 PAGE 54

EXHIBIT B-13
 SUPPLEMENTAL CONDOMINIUM PLAN
 OF
 WYNDHAM PLANTATION
 CONDOMINIUM
 WILLIAMSBURG, VIRGINIA
 SCALE: 1"=10' AUGUST 14, 2002
 JOHN E. SIRINE AND ASSOCIATES, LTD.
 SURVEYORS • ENGINEERS • PLANNERS
 VIRGINIA BEACH, VIRGINIA
 (757) 486-4910

- NOTES:
1. BUILDING DIMENSIONS SHOWN HEREON ARE INTERIOR DIMENSIONS. THESE DIMENSIONS ARE IN FEET AND WERE TAKEN FROM PLANS SUPPLIED ENTITLED "WYNDHAM PLANTATION AT WILLIAMSBURG FLOOR PLANS" BY PROGRESSIVE DESIGNS DATED 11/19/98.
 2. INTERIOR UNIT CONFIGURATIONS AND PARTITIONS AS DEPICTED HEREON ARE FOR THE PURPOSE OF ILLUSTRATION ONLY AND MAY NOT REPRESENT THE INTERIOR OF A UNIT AS ACTUALLY CONSTRUCTED.

SECOND FLOOR - BUILDING 9
 SCALE: 1"=10'



THE UNDERSIGNED CERTIFIES THAT THESE PLANS ARE ACCURATE AND COMPLY WITH THE PROVISIONS OF CODE OF VIRGINIA, SECTION 55-79.58.B AND THAT ALL UNITS OR PORTIONS THEREOF DEPICTED HEREON AND ALL COMMON ELEMENTS HAVE BEEN SUBSTANTIALLY COMPLETED.

PHASE	UNIT No.	UNIT ADDRESS	UNIT AREA
15	70	260 ZELKOVA ROAD	1,997 S.F.
15	71	264 ZELKOVA ROAD	1,957 S.F.
15	72	268 ZELKOVA ROAD	2,101 S.F.

SIGNED: Jeffrey D. Williams
 JEFFREY D. WILLIAMS, L.S.



City of Williamsburg & County of James City
 Circuit Court: This PLAT was recorded on
 29 Aug 2002
 at 8:55 AM/DM: PB 87 PG 49-54
 DOCUMENT # 02-1580
 Patsy B. Woodhidge, Clerk
 Patsy B. Woodhidge, Rep. Clerk

