

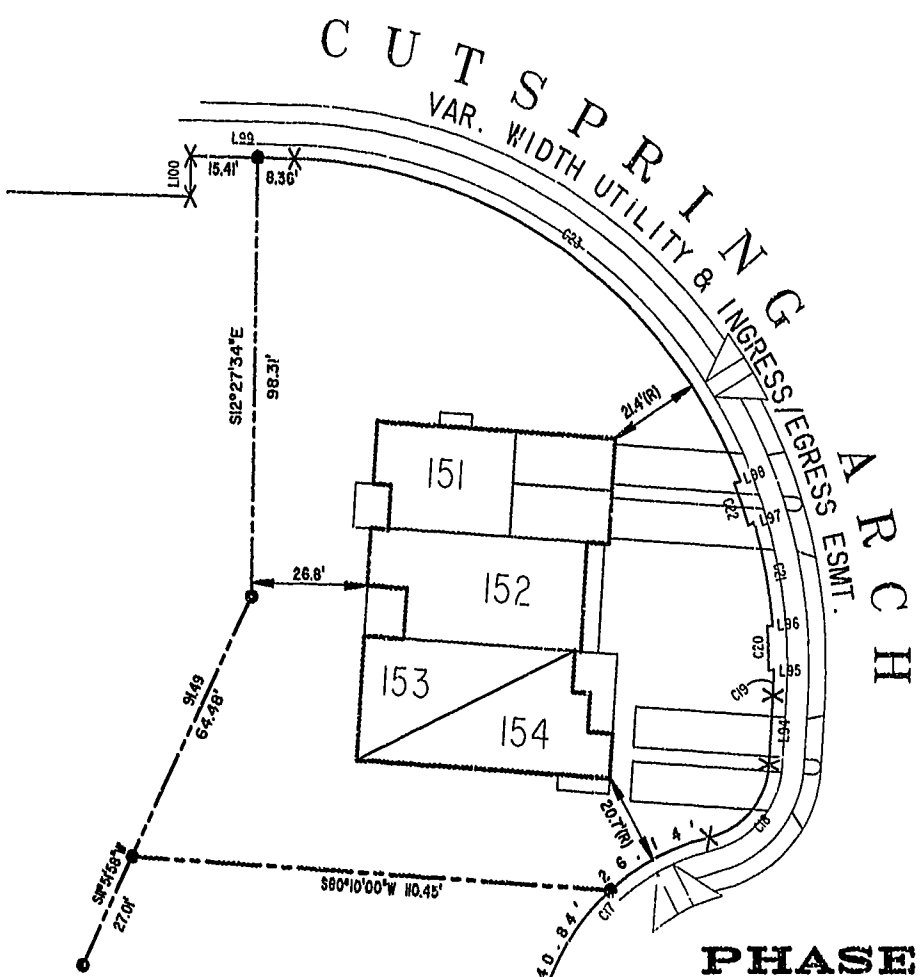
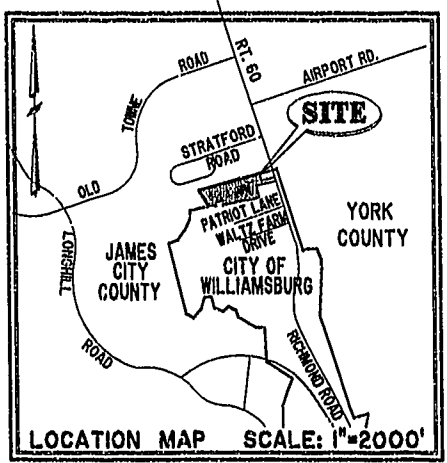
#021492

87 PAGE 34

NOTES:

1. THE TOTAL AREA OF SITE IS 644,266 SQ.FT. (14.790 AC.) OF WHICH 406,179 SQ.FT. (9.325 AC.) IS ADDITIONAL LAND.
2. THE AREA OF THE SUBMITTED LAND IS 238,077 SQ.FT. (5.465 AC.)
3. THE COMMON AREA IS TO BE THE RESPONSIBILITY OF THE CONDOMINIUM ASSOCIATION AND HAS A TOTAL AREA OF 4.436 AC.

BUILDING NUMBER	UNIT NUMBER	UNIT TYPE*	STREET ADDRESS
15	15-151	D	151 CUTSPRING ARCH
15	15-152	C(OPTION)	152 CUTSPRING ARCH
15	15-153	A3	153 CUTSPRING ARCH
15	15-154	E3	154 CUTSPRING ARCH



**PHASE FOUR
BLDG. 15**

AREA = 17,066 SQ. FT. = 0.392 AC.

SCALE: 1" = 25'

City of Williamsburg & County of James City
Circuit Court: This PLAT was recorded on
August 19, 2002
at 1:35 AM PM, PB 87 PG 34-38
DOCUMENT # 021492
BETSY B. WOOLRIDGE, CLERK
C. Newell, Dep. Clerk

I CHRISTOPHER D. CAPOZZI, A CERTIFIED LAND SURVEYOR, DO HEREBY CERTIFY THAT THIS PLAT IS ACCURATE, AND THAT IT COMPLIES WITH THE PROVISIONS OF SECTION 55 - 79.58A OF THE CODE OF VIRGINIA. I FURTHER HEREBY CERTIFY THAT ALL UNITS OR PORTIONS THEREOF DEPICTED HEREON HAVE BEEN SUBSTANTIALLY COMPLETED.

THE UNDERSIGNED CERTIFIED LAND SURVEYOR CERTIFIES THAT HE HAS READ SECTION 55 - 79.58B OF THE CODE OF VIRGINIA, AND FINDS THESE PLANS TO BE ACCURATE AND IN COMPLIANCE WITH THE CODE. I FURTHER CERTIFY THAT ALL UNITS OR PORTIONS THEREOF DEPICTED HEREON HAVE BEEN SUBSTANTIALLY COMPLETED.

8-12-02
DATE
LAND SURVEYOR No. 002398

		DRAWN BY:	HJS	DATE	08/07/02
		COMP BY:	HBA	DATE	08/31/01
		CHECKED BY:	HBA	DATE	08/08/02
EXHIBIT "A" CLAIBORNE (A CONDOMINIUM COMMUNITY) PHASE FOUR CITY OF WILLIAMSBURG, VIRGINIA					
SIZE: 0 CONTRACT NO: 98132 DISK/BOX: 114E/16 FILENAME: PH 4-BLDG-15.DWG REV:		SCALE: N/A DATE: 08/07/02 SHEET 1 of 5			

A-1520

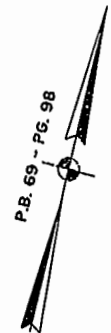
A-1520

#021492

87 PAGE 35

JAMES CITY COUNTY TP 33-3-01-29
NOW OR FORMERLY
GARY E. & CATHY L. NESTER
D.B.619 P.667

JAMES CITY COUNTY TP 33-3-01-24
NOW OR FORMERLY
GOLDEN KNIGHTS, INC.
D.B.568 P.316



MATCH LINE
SEE SHEET 3

ADDITIONAL LAND

L165 L166 L167 L169 L170 L172 L174 L176 L178 L180 L181 L182 L183 L184 L185 L186 L187 L188 L189 L190 L191 L192 L193 L194 L195 L196 L197 L198 L199 L200 L201 L202 L203 L204 L205 L206 L207 L208 L209 L210 L211 L212 L213 L214 L215 L216 L217 L218 L219 L220 L221 L222 L223 L224 L225 L226 L227 L228 L229 L230 L231 L232 L233 L234 L235 L236 L237 L238 L239 L240 L241 L242 L243 L244 L245 L246 L247

SEE SHEET 3

RAVEN TERRACE
VAR. WIDTH UTILITY & INGRESS/EGRESS ESMT.
COMMON AREA

ADDITIONAL LAND

CLAIBORNE DRIVE
VAR. WIDTH UTILITY & INGRESS/EGRESS ESMT.
COMMON AREA

CHELSEA GCA REALTY PARTNERSHIP, L.P.
TP 282-04-00-001
NOW OR FORMERLY
D.B.506 P.407

MARK II INVESTMENTS LTD.
TP 252-01-00-009
NOW OR FORMERLY
D.B.130 P.671

TP 252-01-00-008
N78°27'47"E 321.22'

S78°27'47"W 408.02'
321.16'

COMMON AREA - PHASE ON?

S78°27'39"W 320.36'
308.40'

CHELSEA GCA REALTY PARTNERSHIP, L.P.
TP 282-05-00-001
NOW OR FORMERLY
D.B.113 P.683

DETAIL
N.T.S.

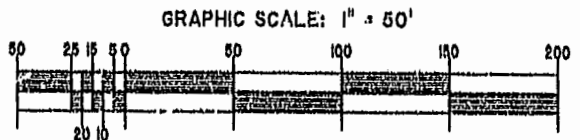
U.S. RTE. 60
RICHMOND ROAD

P.B. 69 - PG. 98

City of Williamsburg & County of James City
Circuit Court: This PLAT was recorded on
August 19, 2002
at 1:35 AM PM on 87 PG 34/38
DOCUMENT # 021492
BETSY B. WOOLRIDGE, CLERK
C. Sherrill, Dep. Clerk

EXHIBIT "A"
CLAIBORNE
(A CONDOMINIUM COMMUNITY)
PHASE FOUR

CITY OF WILLIAMSBURG, VIRGINIA



Hassel & Polkes, P.C. Engineers Surveyors Planners Chesapeake, VA, 23320 (757) 547-9531	SIZE C	CONTRACT NO 114E/16	FILENAME HI-4-BLDG-15-DWG	REV.
SCALE: 1" = 50'	DATE: 08/07/02	SHEET 2 of 5		

A-1520

A-1520

JAMES CITY COUNTY TP 33-3-01-27
NOW OR FORMERLY
ARTCRAFT - STRATFORD, L.C.
D.B. 649 P. 470

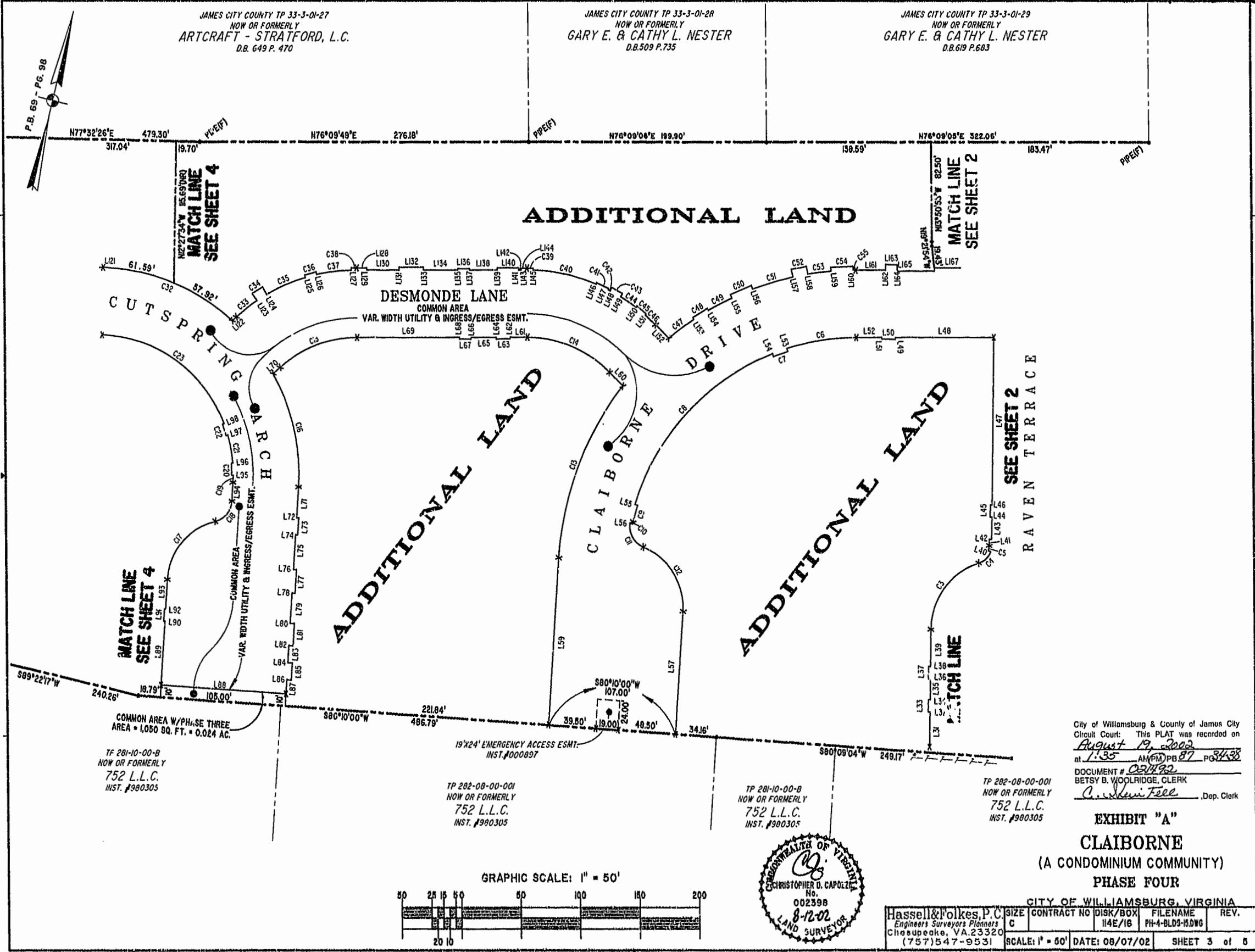
JAMES CITY COUNTY TP 33-3-01-28
NOW OR FORMERLY
GARY E. & CATHY L. NESTER
D.B. 509 P. 735

JAMES CITY COUNTY TP 33-3-01-29
NOW OR FORMERLY
GARY E. & CATHY L. NESTER
D.B. 619 P. 603

ADDITIONAL LAND

ADDITIONAL LAND

ADDITIONAL LAND



MATCH LINE
SEE SHEET 4

MATCH LINE
SEE SHEET 4

MATCH LINE
SEE SHEET 2

MATCH LINE
SEE SHEET 2

MATCH LINE

COMMON AREA W/PHASE THREE
AREA = 1,050 SQ. FT. = 0.024 AC.

TP 281-10-00-B
NOW OR FORMERLY
752 L.L.C.
INST. #980305

19'x24' EMERGENCY ACCESS ESMT.
INST. #000897

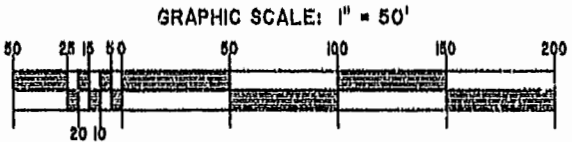
TP 282-08-00-001
NOW OR FORMERLY
752 L.L.C.
INST. #980305

TP 281-10-00-B
NOW OR FORMERLY
752 L.L.C.
INST. #980305

TP 282-08-00-001
NOW OR FORMERLY
752 L.L.C.
INST. #980305

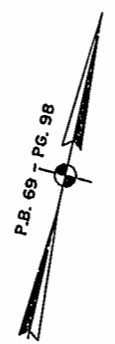
City of Williamsburg & County of James City
Circuit Court: This PLAT was recorded on
August 19, 2002
at 1:35 AM (PM) PB 87 PG 34-38
DOCUMENT # 051492
BETSY B. WOOLRIDGE, CLERK
C. Kevin Felt, Dep. Clerk

EXHIBIT "A" CLAIBORNE (A CONDOMINIUM COMMUNITY) PHASE FOUR



Hassel & Polkes, P.C. Engineers Surveyors Planners Chesapeake, VA 23320 (757) 547-9531	SIZE C	CONTRACT NO 114E/16	DISK/BOX PH-4-BLD3-15.DWG	FILENAME REV.
SCALE: 1" = 50'		DATE: 08/07/02		SHEET 3 of 5

JAMES CITY COUNTY TP 33-3-01-27
NOW OR FORMERLY
ARTCRAFT - STRATFORD, L.C.
D.B. 649 P. 470



CITY OF WILLIAMSBURG CORPORATE LIMITS
JAMES CITY COUNTY CORPORATE LIMITS
18" PIPELINE ESMT. CITY OF NEWPORT NEWS
200' VA. POWER ESMT. P.B. 69 P. 98, P.B. 12 P. 48

ADDITIONAL LAND

PHASE FOUR
BLDG. 15
SEE DETAIL ON SHEET I

ADDITIONAL LAND

CUTSPRING ARCH
VAR. WIDTH UTILITY & INGRESS/EGRESS ESMT.

JAMES CITY COUNTY TP 33-3-01-30
NOW OR FORMERLY
PHILIP RICHARDSON CO., INC.
P.B. 69 P. 98
INST. #980012581

DETAIL
N.T.S.

TP 201-03-00-A
NOW OR FORMERLY
SALAH & CHANG TURKMANI
D.B. 94 P. 92

TP 201-10-00-B
NOW OR FORMERLY
752 L.L.C.
INST. #980305

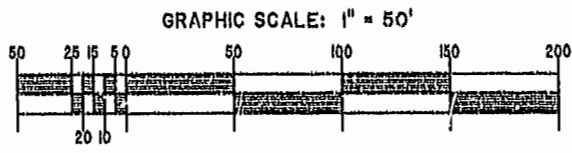
COMMON AREA W/PHASE FOUR
AREA = 1,080 SQ. FT. = 0.024 AC.

City of Williamsburg & County of James City
Circuit Court: This PLAT was recorded on
August 17, 2002
at 1:35 AM P.M. P.B. 87 P. 37-38
DOCUMENT # 021492
BETSY B. WOODRIDGE, CLERK
C. Kevin Peck, Dep. Clerk

EXHIBIT "A"
CLAIBORNE
(A CONDOMINIUM COMMUNITY)
PHASE FOUR

CITY OF WILLIAMSBURG, VIRGINIA

Hassell & Polkes, P.C. Engineers Surveyors Planners Chesapeake, VA 23320 (757) 547-9531	SIZE C	CONTRACT NO 114E/16	DISK/BOX 114E/16	FILENAME PH-4-BLDG-19.DWG	REV.
SCALE: 1" = 50'		DATE: 08/07/02		SHEET 4 of 5	



#021492

87 PAGE 38

LINE TABLE - UTILITY & INGRESS/EGRESS EASEMENT

CURVE TABLE - UTILITY & INGRESS/EGRESS EASEMENT

Table with columns: LINE, BEARING, DISTANCE. Contains utility and ingress/egress easement data for lines L1 through L77.

Table with columns: LINE, BEARING, DISTANCE. Contains utility and ingress/egress easement data for lines L78 through L184.

Table with columns: LINE, BEARING, DISTANCE. Contains utility and ingress/egress easement data for lines L185 through L192.

Table with columns: CURVE, RADIUS, ARC LENGTH, DELTA ANGLE, TANGENT, CHORD BEARING, LENGTH. Contains curve data for curves C1 through C63.

City of Williamsburg & County of James City Circuit Court. This PLAT was recorded on August 19, 2008 at 1:35 AM (PMD) PB 87 PG 34-35 DOCUMENT # 021492 BETSY B. WOODRIDGE, CLERK C. Schmitt, Dep. Clerk



EXHIBIT "A" CLAIBORNE (A CONDOMINIUM COMMUNITY) PHASE FOUR CITY OF WILLIAMSBURG, VIRGINIA. Includes Hassell & Pokes, P.C. logo and contract details.