

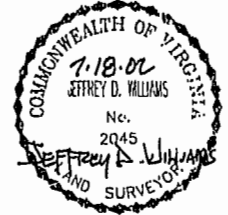
EXHIBIT B-12
SUPPLEMENTAL CONDOMINIUM PLAT
OF
WYNDHAM PLANTATION
CONDOMINIUM

WILLIAMSBURG, VIRGINIA
SCALE: 1"=100' JULY 18, 2002
JOHN E. SIRINE AND ASSOCIATES, LTD.
SURVEYORS • ENGINEERS • PLANNERS
VIRGINIA BEACH, VIRGINIA
(757) 486-4910

MERRIMAC TRAIL
(STATE ROUTE 143)
(FORMERLY STATE ROUTE 168)

THE UNDERSIGNED CERTIFIES THAT THESE PLATS ARE ACCURATE AND COMPLY WITH THE PROVISIONS OF CODE OF VIRGINIA, SECTION 55-79.5B.A AND THAT ALL UNITS OR PORTIONS THEREOF DEPICTED HEREON AND ALL COMMON ELEMENTS HAVE BEEN SUBSTANTIALLY COMPLETED, UNLESS OTHERWISE NOTED.

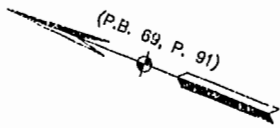
SIGNED: Jeffrey D. Williams
JEFFREY D. WILLIAMS, L.S.



NOW OR FORMERLY
COLONIAL PINES APTS.
(D.B. 44, P. 229)(D.B. 48, P. 229)

NOW OR FORMERLY
COMMON AREA, BARCLAY SQUARE
(P.B. 29, P. 62)

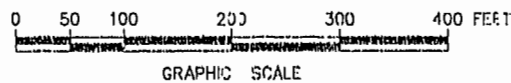
NOTE: THE FOLLOWING PARCELS ARE ADDITIONAL LAND.
PARCEL 1b PARCEL 1h PARCEL 1m
PARCEL 1c PARCEL 1i PARCEL 1n
PARCEL 1d PARCEL 1j PARCEL 1p
PARCEL 1f PARCEL 1k



LINE DATA		
NO.	BEARING	DISTANCE
L1	N 28°09'33" W	3.00'
L2	N 28°09'33" W	33.24'
L3	N 28°09'33" W	27.00'
L4	S 77°48'10" E	23.69'
L5	S 12°11'50" W	17.97'
L6	S 77°48'10" E	26.65'
L7	S 77°48'10" E	99.51'

CURVE DATA						
NO.	RADIUS	DELTA	ARC	TANGENT	CHORD	CHORD BEARING
1	985.93'	28°45'07"	494.76'	252.70'	489.58'	N 21°19'43" W
2	1045.93'	16°50'46"	307.52'	154.88'	306.42'	N 44°07'40" W
3	145.00'	07°08'15"	18.06'	9.04'	18.05'	N 73°38'34" E
6	835.93'	08°16'51"	120.82'	60.51'	120.71'	S 39°50'42" E
7	835.93'	48°00'10"	700.31'	372.18'	660.01'	S 11°42'18" E
8	53.00'	49°38'37"	45.92'	24.51'	44.50'	N 37°01'09" E
9	50.00'	40°21'23"	35.22'	18.37'	34.49'	N 82°01'09" E
10	77.00'	40°21'23"	54.24'	28.30'	53.12'	N 82°01'09" E
11	78.50'	90°00'00"	123.31'	78.50'	111.02'	S 32°48'10" E
12	189.00'	11°28'00"	37.83'	18.98'	37.76'	S 14°09'36" E

City of Williamsburg & County of James City
Circuit Court: This PLAT was recorded on
22 July 2002
at 12:13 AM/PM, PB 89, PG 1-4
DOCUMENT # 021294
RETRY B. WOOLRIDGE, CLERK



#021294

87 PAGE 2

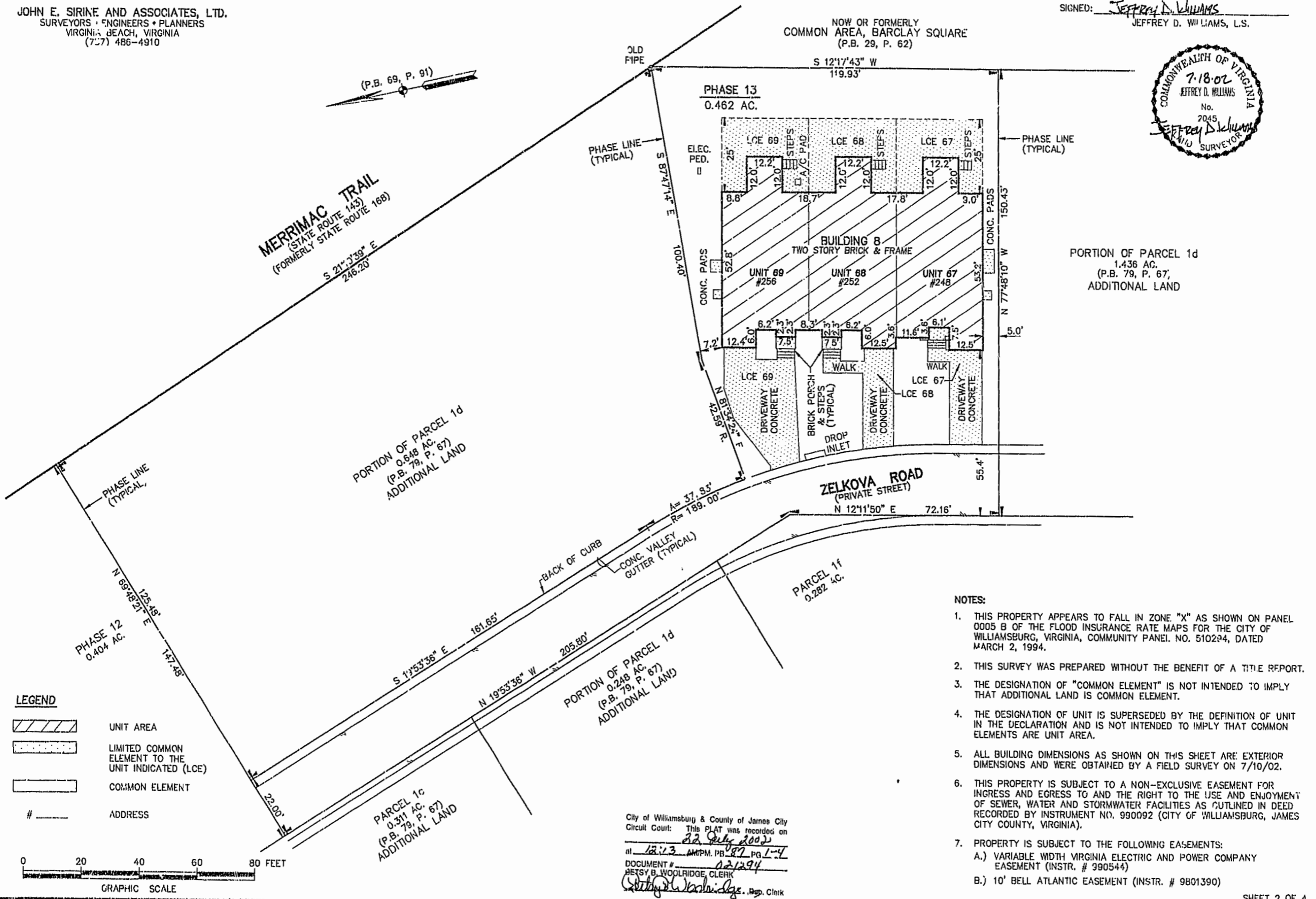
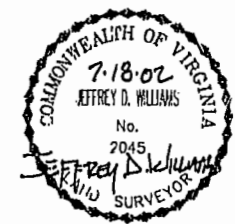
EXHIBIT B-12
SUPPLEMENTAL CONDOMINIUM PLAT
OF
WYNDHAM PLANTATION
CONDOMINIUM

WILLIAMSBURG, VIRGINIA
SCALE: 1"=20' JULY 16, 2002

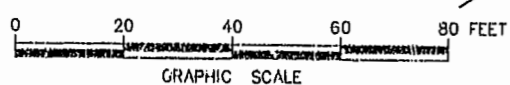
JOHN E. SIRINE AND ASSOCIATES, LTD.
SURVEYORS • ENGINEERS • PLANNERS
VIRGINIA BEACH, VIRGINIA
(757) 486-4910

THE UNDERSIGNED CERTIFIES THAT THESE PLATS ARE ACCURATE AND COMPLY WITH THE PROVISIONS OF CODE OF VIRGINIA, SECTION 55-79.52.A AND THAT ALL UNITS OR PORTIONS THEREOF DEPICTED HEREON AND ALL COMMON ELEMENTS HAVE BEEN SUBSTANTIALLY COMPLETED.

SIGNED: Jeffrey D. Williams
JEFFREY D. WILLIAMS, L.S.



- LEGEND**
- UNIT AREA
 - LIMITED COMMON ELEMENT TO THE UNIT INDICATED (LCE)
 - COMMON ELEMENT
 - # _____ ADDRESS



NOTES:

1. THIS PROPERTY APPEARS TO FALL IN ZONE "X" AS SHOWN ON PANEL 0005 B OF THE FLOOD INSURANCE RATE MAPS FOR THE CITY OF WILLIAMSBURG, VIRGINIA, COMMUNITY PANEL NO. 510204, DATED MARCH 2, 1994.
2. THIS SURVEY WAS PREPARED WITHOUT THE BENEFIT OF A TITLE REPORT.
3. THE DESIGNATION OF "COMMON ELEMENT" IS NOT INTENDED TO IMPLY THAT ADDITIONAL LAND IS COMMON ELEMENT.
4. THE DESIGNATION OF UNIT IS SUPERSEDED BY THE DEFINITION OF UNIT IN THE DECLARATION AND IS NOT INTENDED TO IMPLY THAT COMMON ELEMENTS ARE UNIT AREA.
5. ALL BUILDING DIMENSIONS AS SHOWN ON THIS SHEET ARE EXTERIOR DIMENSIONS AND WERE OBTAINED BY A FIELD SURVEY ON 7/10/02.
6. THIS PROPERTY IS SUBJECT TO A NON-EXCLUSIVE EASEMENT FOR INGRESS AND EGRESS TO AND THE RIGHT TO THE USE AND ENJOYMENT OF SEWER, WATER AND STORMWATER FACILITIES AS OUTLINED IN DEED RECORDED BY INSTRUMENT NO. 990092 (CITY OF WILLIAMSBURG, JAMES CITY COUNTY, VIRGINIA).
7. PROPERTY IS SUBJECT TO THE FOLLOWING EASEMENTS:
 - A.) VARIABLE WIDTH VIRGINIA ELECTRIC AND POWER COMPANY EASEMENT (INSTR. # 390544)
 - B.) 10' BELL ATLANTIC EASEMENT (INSTR. # 9801390)

City of Williamsburg & County of James City
Circuit Court: This PLAT was recorded on
22 July 2002
at 12:13 AM/PM, PB 87, PG 1-4
DOCUMENT # 021294
BETSY B. WOOLRIDGE, CLERK
Betsy Woolridge, Reg. Clerk

EXHIBIT B-12
SUPPLEMENTAL CONDOMINIUM PLAN
OF
WYNDHAM PLANTATION
CONDOMINIUM

WILLIAMSBURG, VIRGINIA
SCALE: 1"=10' JULY 18, 2002

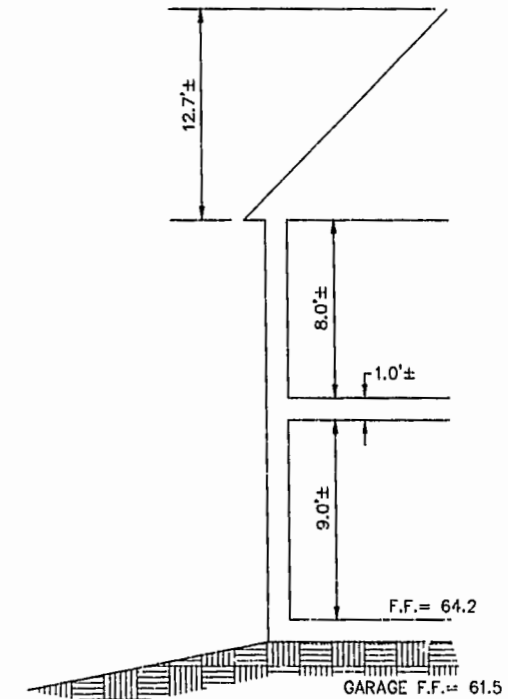
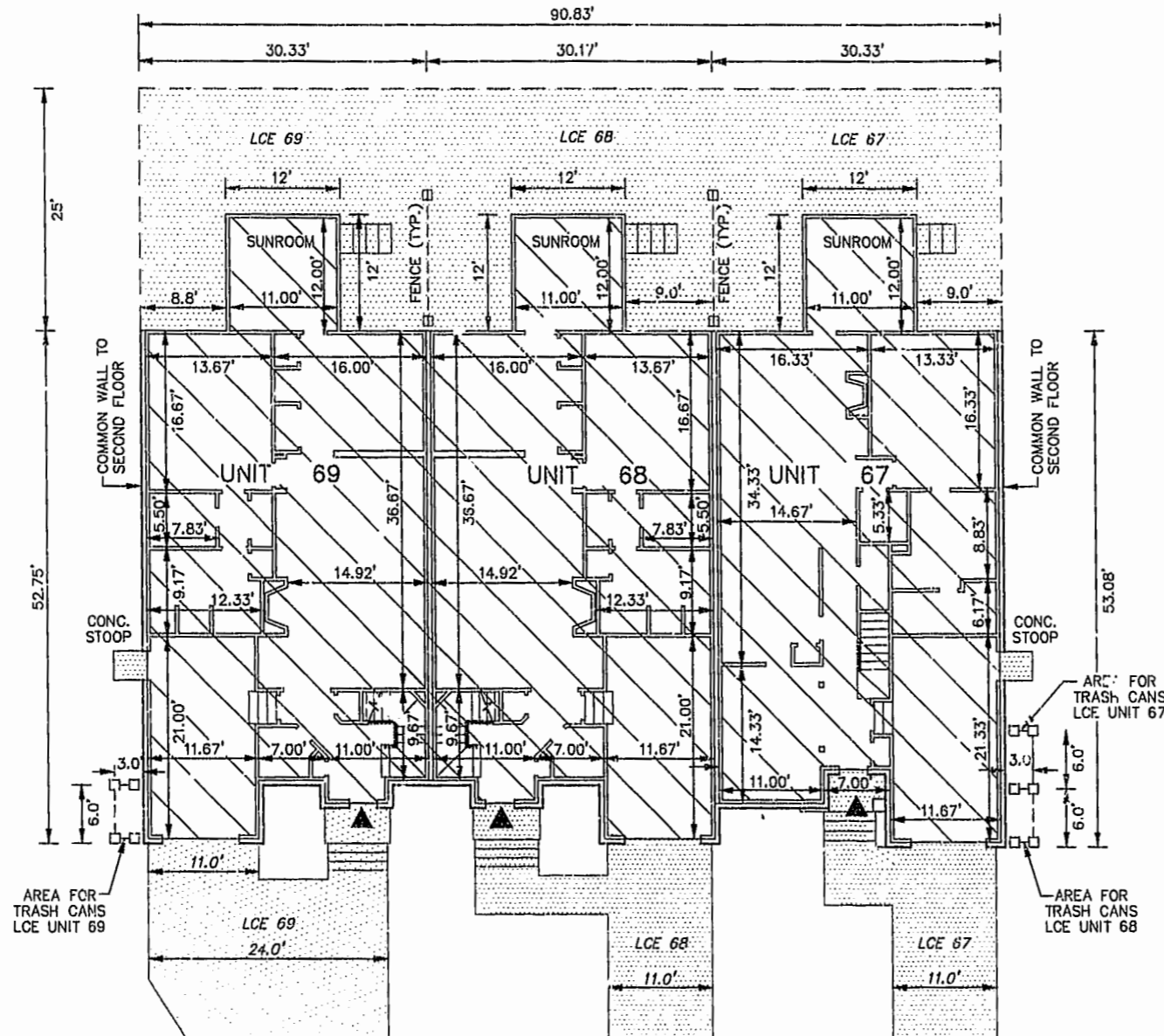
JOHN E. SIRINE AND ASSOCIATES, LTD.
SURVEYORS • ENGINEERS • PLANNERS
VIRGINIA BEACH, VIRGINIA
(757) 486-4910

NOTES:

1. BUILDING DIMENSIONS SHOWN HEREON ARE INTERIOR DIMENSIONS. THESE DIMENSIONS ARE IN FEET AND WERE TAKEN FROM PLANS SUPPLIED ENTITLED "WYNDHAM PLANTATION AT WILLIAMSBURG, FLOOR PLANS" BY PROGRESSIVE DESIGNS DATED 11/19/98.
2. INTERIOR UNIT CONFIGURATIONS AND PARTITIONS AS DEPICTED HEREON ARE FOR THE PURPOSE OF ILLUSTRATION ONLY AND MAY NOT REPRESENT THE INTERIOR OF A UNIT AS ACTUALLY CONSTRUCTED.

FIRST FLOOR - BUILDING 8

SCALE: 1"=10'



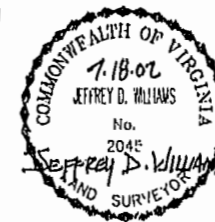
SCALE: 1"=5'

- UNIT AREA
- LIMITED COMMON ELEMENT TO THE UNIT INDICATED (LCE)
- INDICATES FRONT ENTRANCE TO UNIT

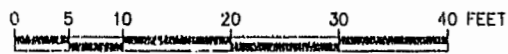
THE UNDERSIGNED CERTIFIES THAT THESE PLANS ARE ACCUR/TE AND COMPLY WITH THE PROVISIONS OF CODE OF VIRGINIA, SECTION 55-79.5B.B AND THAT ALL UNITS OR PORTIONS THEREOF DEPICTED HEREON AND ALL COMMON ELEMENTS HAVE BEEN SUBSTANTIALLY COMPLETED, UNLESS OTHERWISE NOTED.

PHASE	UNIT No.	UNIT ADDRESS	UNIT AREA
13	67	248 ZELKOVA ROAD	1,997 S.F.
13	68	252 ZELKOVA ROAD	2,101 S.F.
13	69	256 ZELKOVA ROAD	2,101 S.F.

SIGNED: JEFFREY D. WILLIAMS
JEFFREY D. WILLIAMS, L.S.



City of Williamsburg & County of James City
Circuit Court: This PLAT was recorded on
22 July 2002
at 12:13 PM, PB 87 PG 1-4
DOCUMENT # 021294
BETSY B. WOOLRIDGE, CLERK
Betsy B. Woolridge Dep. Clerk



GRAPHIC SCALE

#021294

87 PAGE 4

EXHIBIT B-12
SUPPLEMENTAL CONDOMINIUM PLAN
OF
WYNDHAM PLANTATION
CONDOMINIUM

WILLIAMSBURG, VIRGINIA
SCALE: 1"=10' JULY 18, 2002

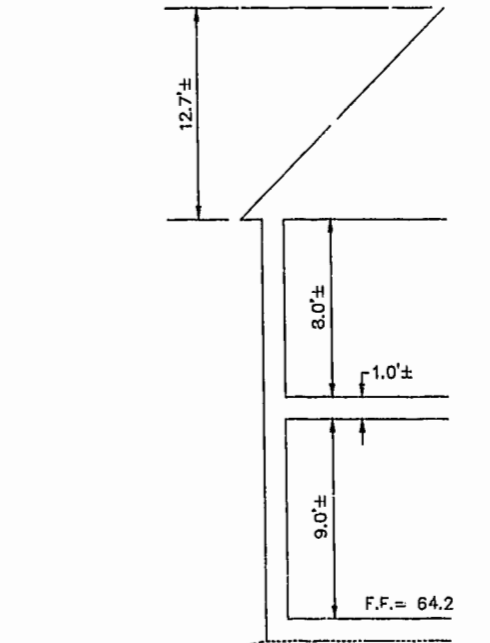
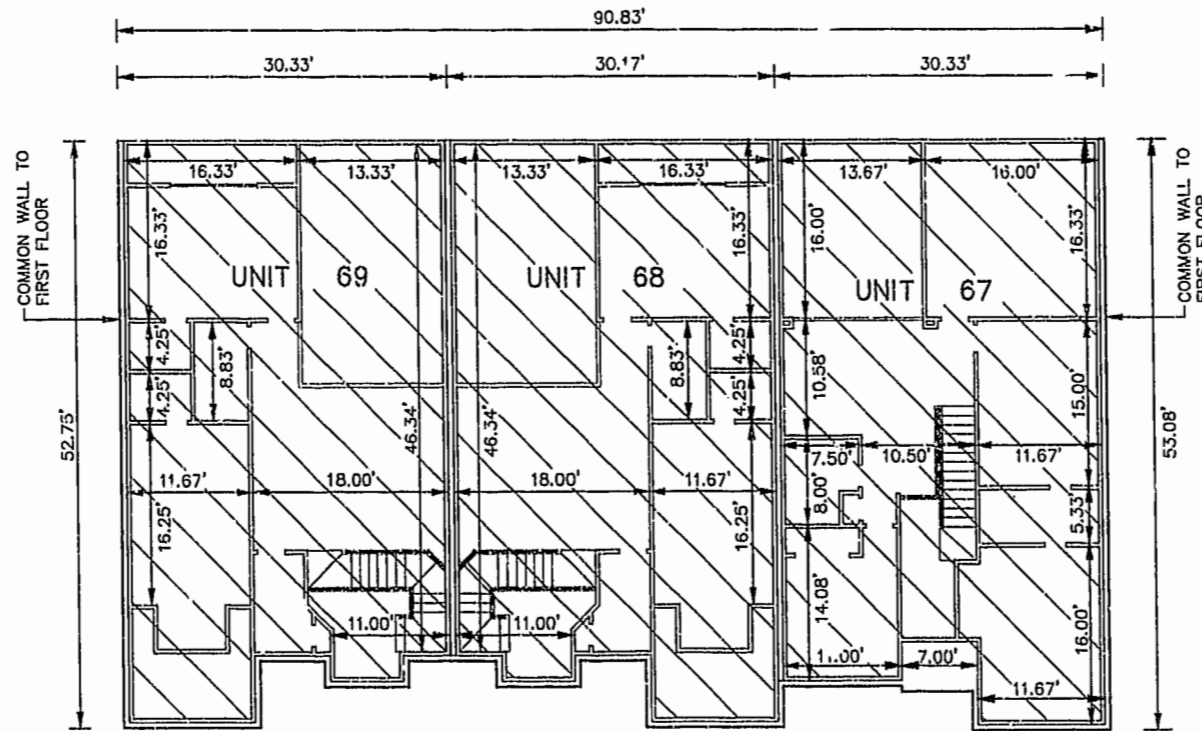
JOHN E. SIRINE AND ASSOCIATES, LTD.
SURVEYORS • ENGINEERS • PLANNERS
VIRGINIA BEACH, VIRGINIA
(757) 486-4910

NOTES:

1. BUILDING DIMENSIONS SHOWN HEREON ARE INTERIOR DIMENSIONS. THESE DIMENSIONS ARE IN FEET AND WERE TAKEN FROM PLANS SUPPLIED ENTITLED "WYNDHAM PLANTATION AT WILLIAMSBURG, FLOOR PLANS" BY PROGRESSIVE DESIGNS DATED 11/19/98.
2. INTERIOR UNIT CONFIGURATIONS AND PARTITIONS AS DEPICTED HEREON ARE FOR THE PURPOSE OF ILLUSTRATION ONLY AND MAY NOT REPRESENT THE INTERIOR OF A UNIT AS ACTUALLY CONSTRUCTED.

SECOND FLOOR - BUILDING 8

SCALE: 1"=10'



GARAGE F.F.= 61.5

SCALE: 1"=5'

UNIT AREA

THE UNDERSIGNED CERTIFIES THAT THESE PLANS ARE ACCURATE AND COMPLY WITH THE PROVISIONS OF CODE OF VIRGINIA, SECTION 55-79.58.B AND THAT ALL UNITS OR PORTIONS THEREOF DEPICTED HEREON AND ALL COMMON ELEMENTS HAVE BEEN SUBSTANTIALLY COMPLETED.

PHASE	UNIT No.	UNIT ADDRESS	UNIT AREA
13	67	248 ZELKOVA ROAD	1,997 S.F.
13	68	252 ZELKOVA ROAD	2,101 S.F.
13	69	256 ZELKOVA ROAD	2,101 S.F.

SIGNED: Jeffrey D. Williams
JEFFREY D. WILLIAMS, L.S.



City of Williamsburg & County of James City
Circuit Court: This PLAT was recorded on
at 12:13 22 July 2002
AM/PM, PG 87 PG 1-4
DOCUMENT # 021294
BETSY B. WOOLRIDGE, CLERK
Betsy Woolridge, Dep. Clerk

