

021064

86 PAGE 47

OWNER'S CONSENT AND DEDICATION

THE PLATTING OF THE LAND SHOWN HEREON IS WITH THE FREE CONSENT AND IN ACCORDANCE WITH THE DESIRES OF THE UNDERSIGNED OWNERS, PROPRIETORS, AND TRUSTEES, IF ANY.

6/11/2002
FOR 752 L.L.C., A VIRGINIA LIMITED LIABILITY COMPANY
DATE
Alfred R. Kalluzick
PRINTED NAME

NOTARY

STATE OF VIRGINIA, CITY/COUNTY OF Virginia Beach, TO-WIT:

I, Tommy R. Upton, A NOTARY PUBLIC IN AND FOR THE CITY/COUNTY AND STATE AFORESAID, DO HEREBY CERTIFY THAT THE ABOVE PERSON WHOSE NAME IS SIGNED TO THE FOREGOING WRITING HAS ACKNOWLEDGED THE SAME BEFORE ME IN MY CITY/COUNTY AND STATE AFORESAID.

GIVEN UNTO MY HAND THIS 11th DAY OF June, 2002.

MY COMMISSION EXPIRES August 31, 2004.

Tommy R. Upton
NOTARY PUBLIC

OWNER'S CONSENT AND DEDICATION

THE PLATTING OF THE LAND SHOWN HEREON IS WITH THE FREE CONSENT AND IN ACCORDANCE WITH THE DESIRES OF THE UNDERSIGNED OWNERS, PROPRIETORS, AND TRUSTEES, IF ANY.

Carole A. Feltner
6/12/02
TRSTE, INC., A VIRGINIA CORPORATION
DATE

NOTARY

STATE OF VIRGINIA, CITY/COUNTY OF Norfolk, TO-WIT:

I, Stephanie Parsons, A NOTARY PUBLIC IN AND FOR THE CITY/COUNTY AND STATE AFORESAID, DO HEREBY CERTIFY THAT THE ABOVE PERSON WHOSE NAME IS SIGNED TO THE FOREGOING WRITING HAS ACKNOWLEDGED THE SAME BEFORE ME IN MY CITY/COUNTY AND STATE AFORESAID.

GIVEN UNTO MY HAND THIS 12th DAY OF June, 2002.

MY COMMISSION EXPIRES March 31, 2006.

Stephanie B. Parsons
NOTARY PUBLIC



SURVEYOR'S CERTIFICATE

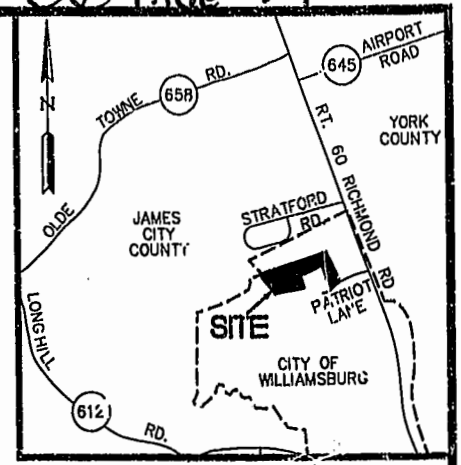
I, A.D. SEBERT, A DULY REGISTERED LAND SURVEYOR, DO HEREBY CERTIFY THAT, TO THE BEST OF MY KNOWLEDGE AND BELIEF, THIS PLAT AND PLANS FOR WESTGATE AT WILLIAMSBURG, A CONDOMINIUM, LABELED SHEETS 1 THROUGH 6, ARE ACCURATE AND COMPLY WITH SECTION 55-79.58 (A) AND AND SECTION 55-79.58 (B), RESPECTIVELY OF THE VIRGINIA CONDOMINIUM ACT, AS AMENDED, AND THAT ALL UNITS OR PORTIONS THEREOF DEPICTED THEREON HAVE BEEN SUBSTANTIALLY COMPLETED UNLESS NOTED OTHERWISE.

A.D. Sebert
5/31/2002
DATE

GENERAL NOTES:

- 1. BUILDING #28 CONTAINS UNITS: #2801, #2802, #2803, #2804.
2. EACH CONDOMINIUM UNIT CONSISTS OF THE SPACE WITHIN THE VERTICAL AND HORIZONTAL BOUNDARIES ESTABLISHED FOR THAT CONDOMINIUM WITHOUT REGARD TO ANY DEVIATIONS THROUGH SUBSEQUENT MOVEMENT IN THE BUILDING CONTAINING SAME. OWNERSHIP OF A CONDOMINIUM UNIT INCLUDES OWNERSHIP OF ALL MATERIALS COVERING THE SURFACE OF ALL INTERIOR WALL PARTITIONS SEPARATING CONDOMINIUM AND THE INTERIOR SURFACE OF EXTERIOR WALLS, ALL FLOOR MATERIALS ABOVE THE SUB-FLOOR ON THE FIRST FLOOR, ALL CEILING MATERIALS BENEATH THE LOWER SURFACE OF THE LOWEST HORIZONTAL MEMBERS OF THE OVERHEAD SUPPORT SYSTEM, AND ALL PROPERTY OF EVERY NATURE LYING WHOLLY WITHIN A UNIT WHICH IS NOT A NECESSITY OR OTHERWISE RESERVED AS PART OF THE COMMON ELEMENTS.
3. COMMON ELEMENTS INCLUDE ALL PORTIONS OF THE CONDOMINIUM OTHER THAN THE UNITS DESIGNATED HEREON; AND DEFINED IN THE CONDOMINIUM DOCUMENTS AND THE LIMITED COMMON ELEMENTS. EXAMPLES OF COMMON ELEMENTS ARE: PARKING, PAVED AREAS, THE GROUNDS (WHETHER OR NOT LANDSCAPED), ALL PORTIONS OF THE BUILDINGS NOT A PART OF THE UNIT NOR DEFINED AS LIMITED COMMON ELEMENTS, ALL CONDUITS, INSTALLATIONS, WIRES, PIPES, EQUIPMENT, ETC. WHICH SERVE OTHER COMMON ELEMENTS OR WHICH SERVE MORE THAN ONE UNIT.
4. LIMITED COMMON ELEMENTS-EXCEPT AS MAY BE OTHERWISE EXPRESSLY PROVIDED, LIMITED COMMON ELEMENTS INCLUDE DOORS, WINDOWS, PORCHES, BALCONIES, DECKS, PATIO AREAS, SIDEWALKS, WALK WAYS, PARTY WALLS, AND ANY OTHER APPARATUS DESIGNED TO SERVE A SINGLE UNIT, BUT LOCATED OUTSIDE THE BOUNDARIES THEREOF.

Table with 2 columns: PHASE (BUILDING #) and AC.±. Includes PHASE 1 through PHASE 26 and TOTAL 10.975 AC.±.



VICINITY MAP
SCALE: 1"=2000'

TAX PARCEL 281-07-00-001
ZONED B-3 & RM-2
(MULTI-FAMILY DWELLING DISTRICT)
SETBACK LIMITS
SIDE= 15'
REAR= 25'

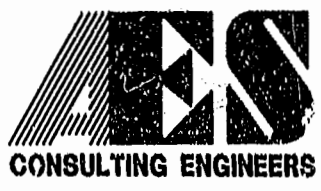
NOTE:
THIS PROPERTY LIES IN ZONE X, (AREAS DETERMINED TO BE OUTSIDE THE 500 YEAR FLOOD PLAIN) PER F.I.R.M. #510294-0005 B, DATED 3/2/94.

CERTIFICATE OF APPROVAL

STATE OF VIRGINIA
CITY OF WILLIAMSBURG
IN THE CLERK'S OFFICE OF THE CIRCUIT COURT FOR THE CITY OF WILLIAMSBURG, VIRGINIA, THIS MAP WAS PRESENTED AND ADMITTED TO RECORD AS THE LAW DIRECTS THIS 14 DAY OF June, 2002, AS INSTRUMENT NUMBER 021064.

TESTE: Betsy B. Woolridge
CLERK

8395p261.dwg
05.31.02-09:20
JFS



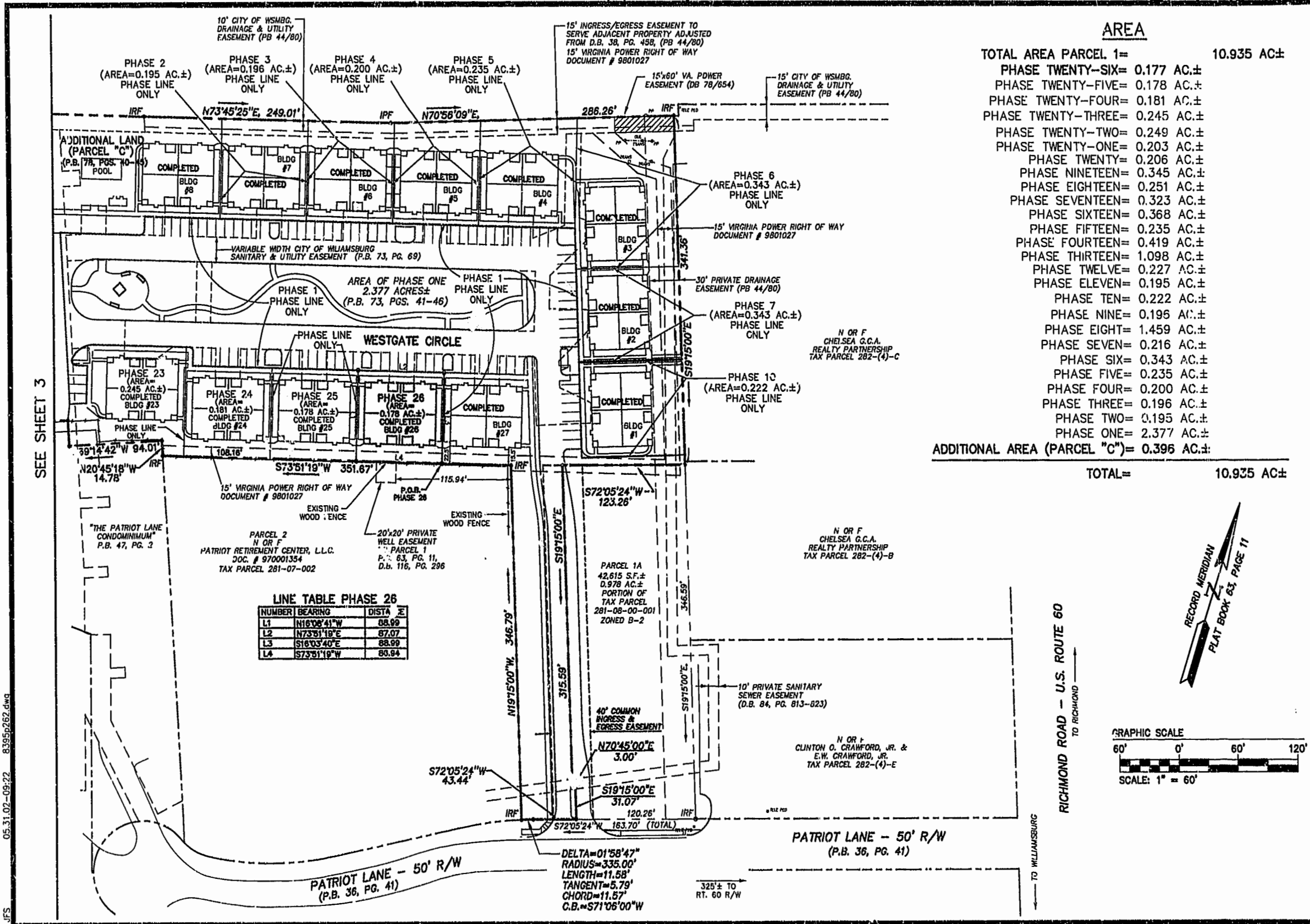
5248 Olde Towne Road, Suite 1
Williamsburg, Virginia 23188
(757) 253-0040
Fax (757) 220-8994

PLAT OF CONDOMINIUM WESTGATE AT WILLIAMSBURG, A CONDOMINIUM PHASE TWENTY-SIX OWNED BY: 752 L.L.C., A VIRGINIA LIMITED LIABILITY COMPANY CITY OF WILLIAMSBURG VIRGINIA

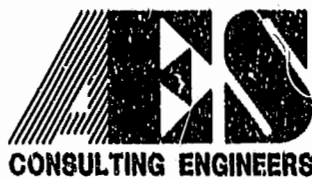


Table with columns: No., DATE, REVISION / COMMENT / NOTE, BY.

Table with columns: Designed GTW/ADS, Drawn JFS, Scale, Date, Project No., Drawing No.



05.31.02-09.22 8395p262.dwg



5248 Olde Towne Road, Suite 1
Williamsburg, Virginia 23188
(757) 253-0040
Fax (757) 220-8994

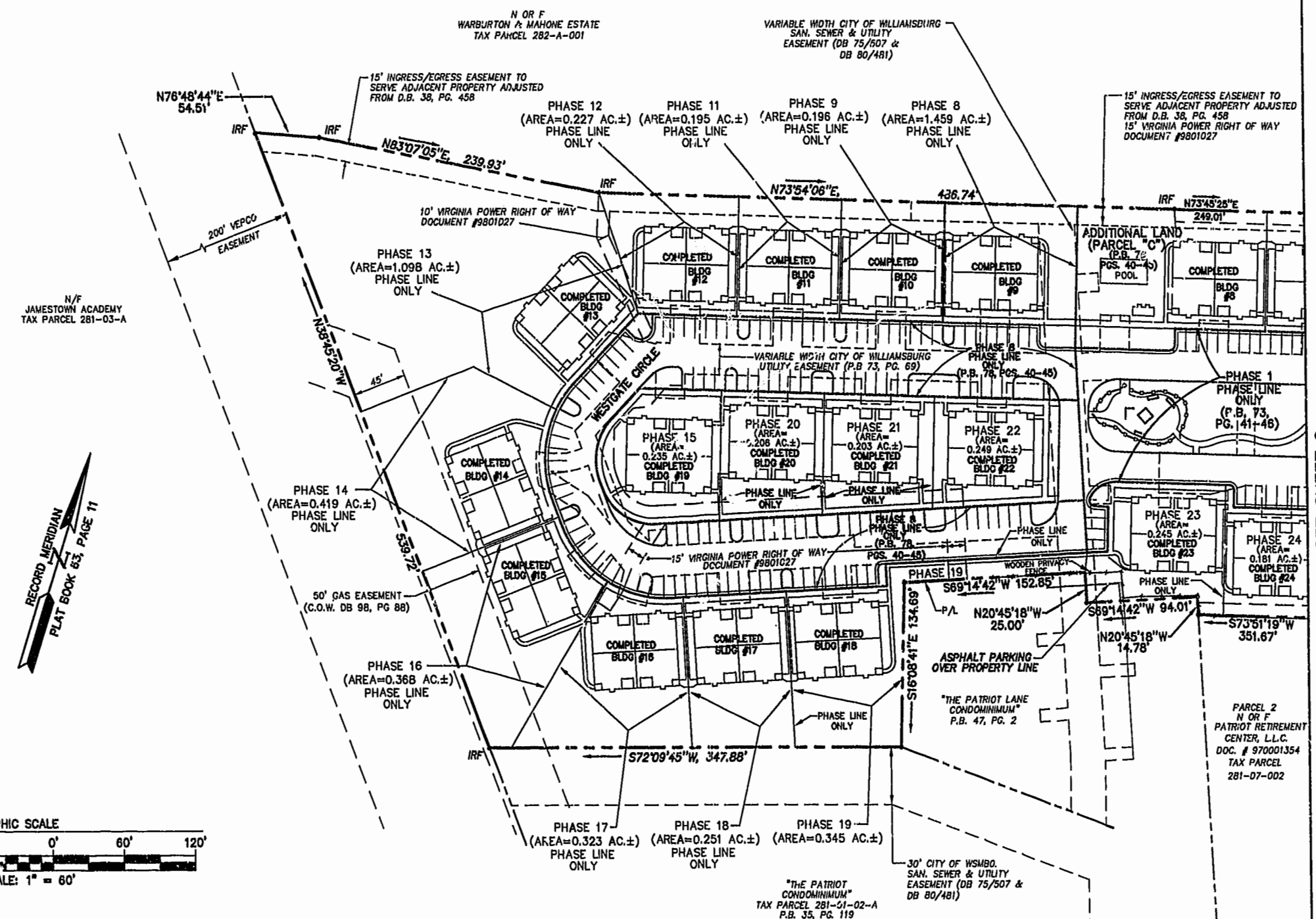
**PLAT OF CONDOMINIUM
WESTGATE AT WILLIAMSBURG,
A CONDOMINIUM
PHASE TWENTY-SIX**
OWNED BY: 752 L.L.C.,
A VIRGINIA LIMITED LIABILITY COMPANY
CITY OF WILLIAMSBURG VIRGINIA



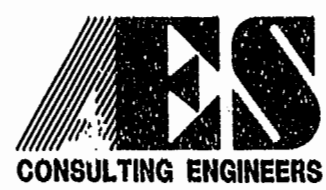
No.	DATE	REVISION / COMMENT / NOTE	BY

City of Williamsburg & County of James City
Circuit Court: This PLAT was recorded on
Scale: 14 June 2002
at 3:00 PM, PB 86, PG 47-52
DOCUMENT # 021064
RETSY B. WOOLRIDGE, CLERK
RETSY B. WOOLRIDGE, Dep. Clerk

Designed GTW/ADS	Drawn JFS
Scale 1" = 60'	Date 5/31/02
Project No. 8395-6	
Drawing No. 2 OF 6	



05.31.02-09.26 93950263.dwg



5248 Olde Towne Road, Suite 1
Williamsburg, Virginia 23188
(757) 253-0040
Fax (757) 220-8994

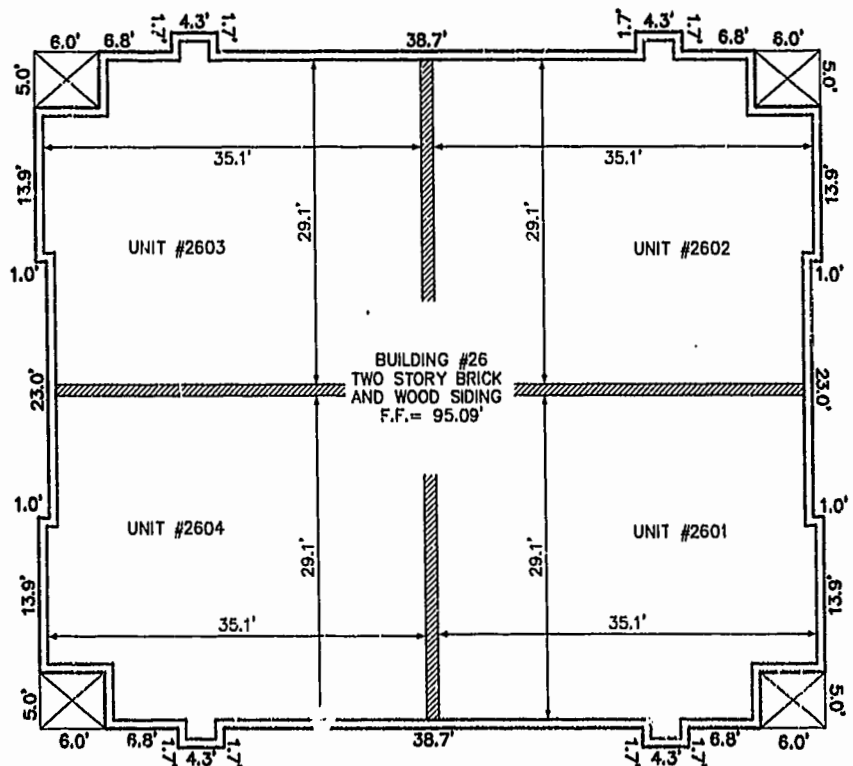
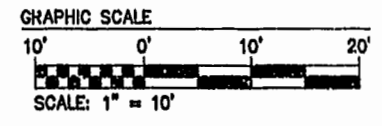
**PLAT OF CONDOMINIUM
WESTGATE AT WILLIAMSBURG,
A CONDOMINIUM
PHASE TWENTY-SIX
OWNED BY: 752 L.L.C.,
A VIRGINIA LIMITED LIABILITY COMPANY
CITY OF WILLIAMSBURG VIRGINIA**



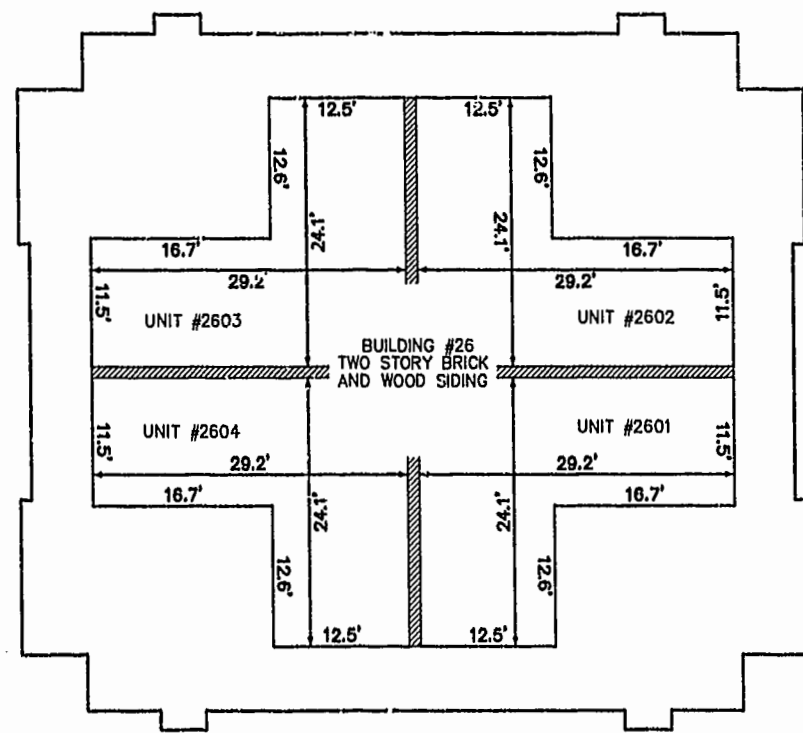
No.	DATE	REVISION / COMMENT / NOTE	BY
		City of Williamsburg & County of James City Circuit Court: This PLAT was recorded on 14 June 2002 at 3:00 AM/PM, P.B. 86, PG. 47-57. DOCUMENT # 021064 Betsy B. Woolridge, Clerk	

Designed GTW/ADS	Drawn JFS
Scale 1" = 60'	Date 5/31/02
Project No. 8395-6	
Drawing No. 3 OF 6	

BUILDING NUMBER	UNIT NUMBER	STREET ADDRESS
26	2601	2801 WESTGATE CIRCLE
26	2602	2802 WESTGATE CIRCLE
26	2603	2803 WESTGATE CIRCLE
26	2604	2804 WESTGATE CIRCLE

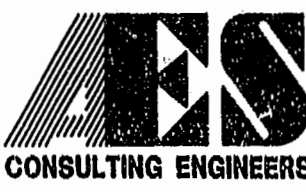


FRONT OF BUILDING
FIRST FLOOR



FRONT OF BUILDING
SECOND FLOOR

8395p264.dwg 05.31.02-09:27 JFS



5248 Olde Towne Road, Suite 1
Williamsburg, Virginia 23188
(757) 253-0040
Fax (757) 220-8994

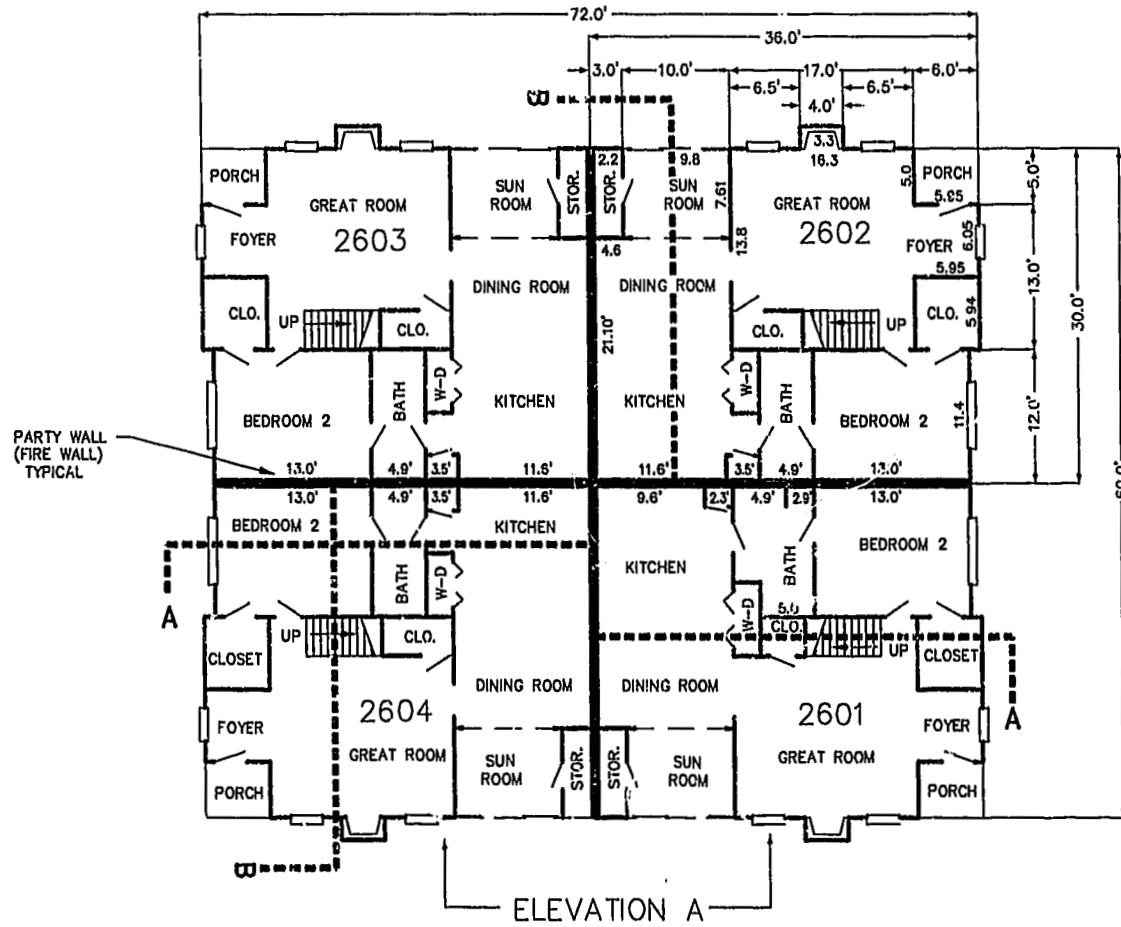
**PLAT OF CONDOMINIUM
WESTGATE AT WILLIAMSBURG,
A CONDOMINIUM
PHASE TWENTY-SIX
OWNED BY: 752 L.L.C.,
A VIRGINIA LIMITED LIABILITY COMPANY
CITY OF WILLIAMSBURG VIRGINIA**



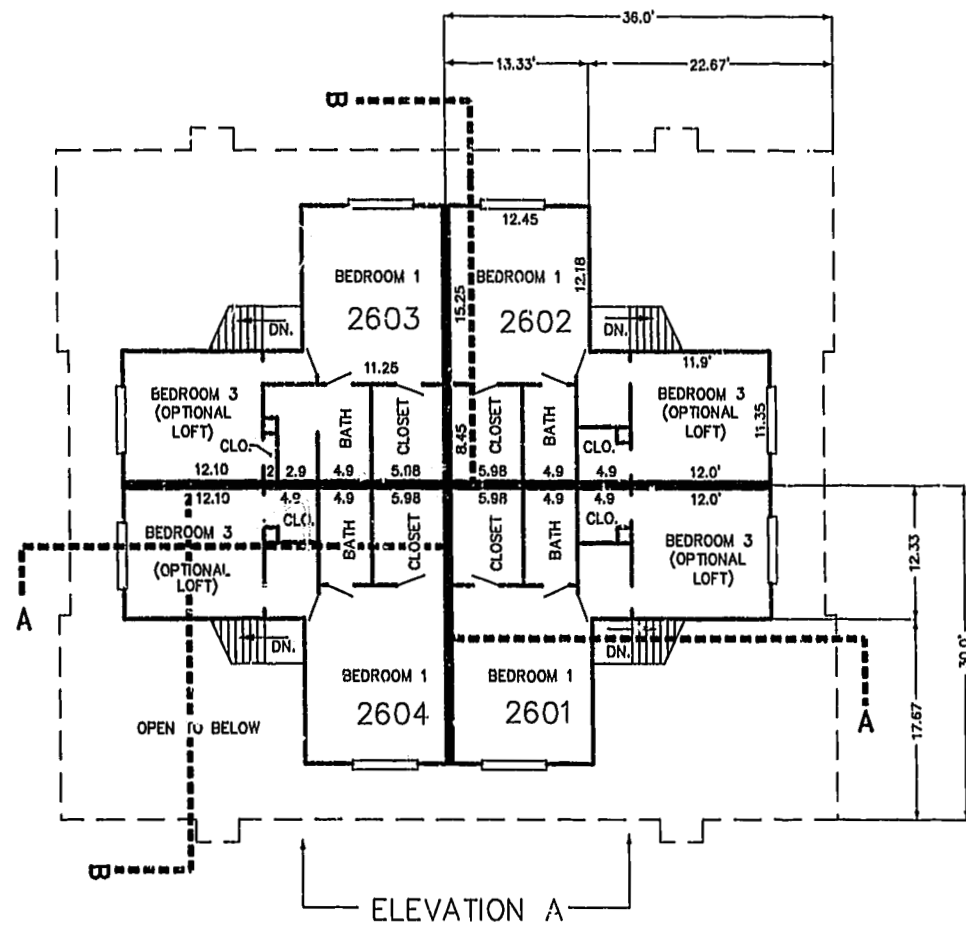
No.	DATE	REVISION / COMMENT / NOTE	BY

City of Williamsburg & County of James City
Circuit Court: This PLAT was recorded on
14 June 2002
at *3:00* AM/PM. PB. *86* PG. *47-52*
DOCUMENT # *021064*
DETSY B. WOOLRIDGE, CLERK
Deetsy B. Woolridge Dep. Clerk

Designed GTW/ADS	Drawn JFS
Scale 1" = 10'	Date 5/31/02
Project No. 8395-6	
Drawing No. 4 OF 6	



FIRST FLOOR PLAN
(UNIT #2602 IS TYPICAL)



SECOND FLOOR PLAN
(UNIT #2602 IS TYPICAL)

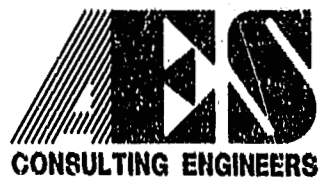


ELEVATION A



ELEVATION B

05.31.02-09.29 8395-255.dwg JFS



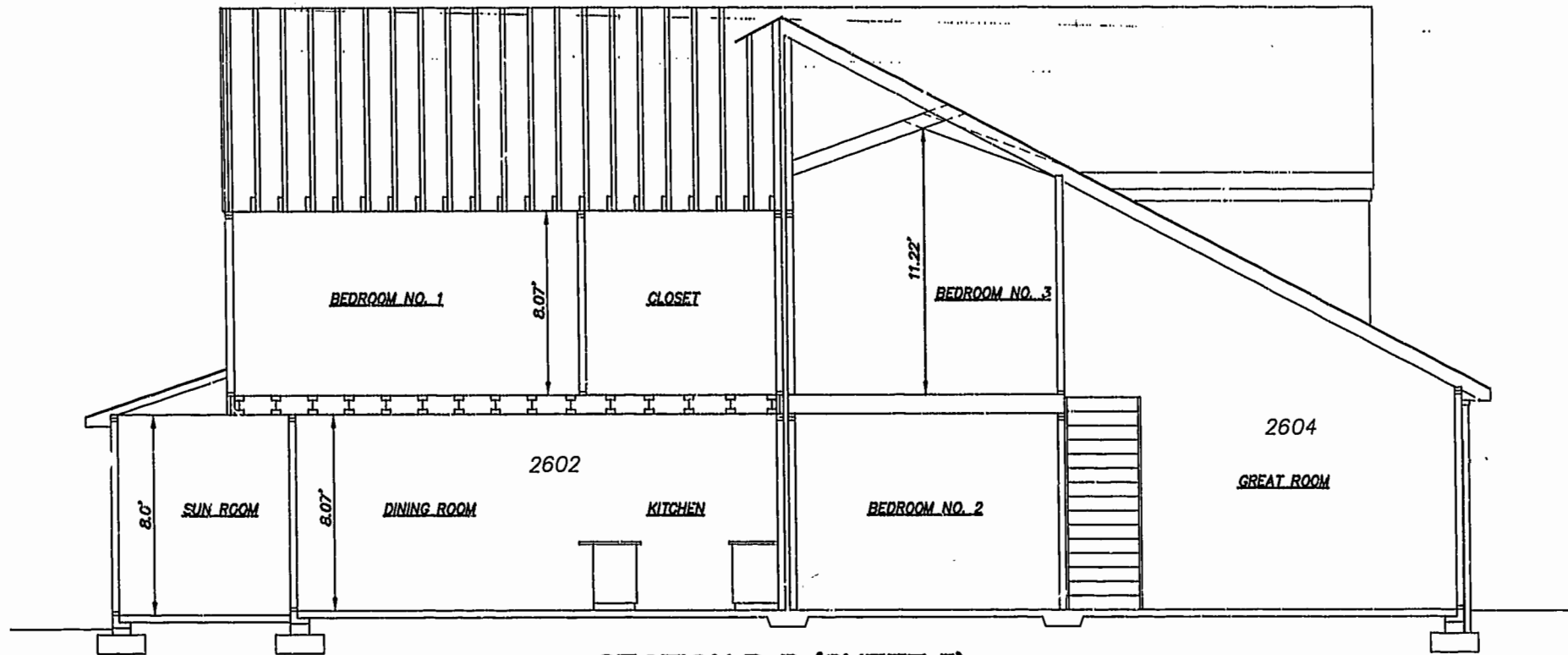
5248 Olde Towne Road, Suite 1
Williamsburg, Virginia 23188
(757) 253-0040
Fax (757) 220-8994

PLAT OF CONDOMINIUM
WESTGATE AT WILLIAMSBURG,
A CONDOMINIUM
PHASE TWENTY-SIX
OWNED BY: 752 L.L.C.,
A VIRGINIA LIMITED LIABILITY COMPANY
CITY OF WILLIAMSBURG VIRGINIA

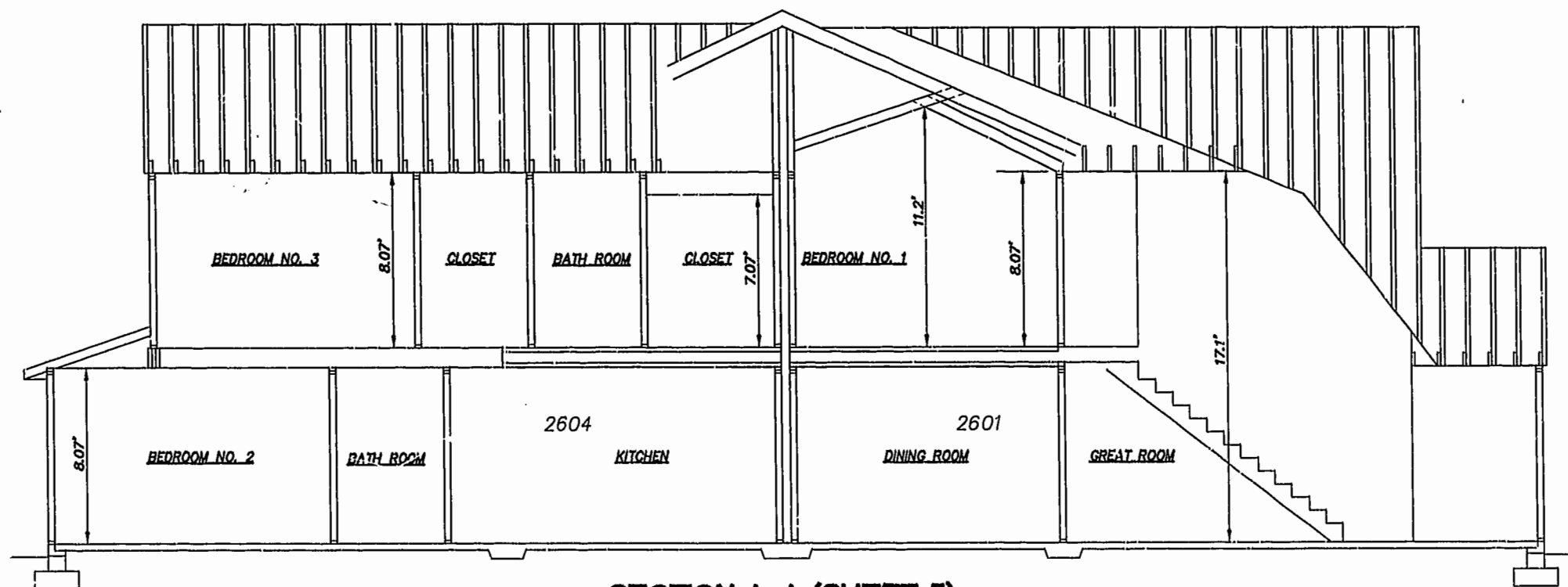


No.	DATE	REVISION / COMMENT / NOTE	BY
		City of Williamsburg & County of James City Circuit Court: This PLAT was recorded on 14 June 2002 at 3:00 AM PM, P.B. # PG 47-52 DOCUMENT # 021064 BETSY B. WOOLRIDGE, CLERK Betsy Woolridge Dep. Clerk	

Designed GTW/ADS	Drawn JFS
Scale 1" = 10'	Date 5/31/02
Project No. 8395-6	
Drawing No. 5 OF 6	



SECTION B-B (SHEET 5)



SECTION A-A (SHEET 5)

05.31.02-09:53 JFS 8395p.266.dwg



5248 Olde Towne Road, Suite 1
 Williamsburg, Virginia 23188
 (757) 253-0040
 Fax (757) 220-8994

PLAT OF CONDOMINIUM
 WESTGATE AT WILLIAMSBURG,
 A CONDOMINIUM
 PHASE TWENTY-SIX
 OWNED BY: 752 L.L.C.,
 A VIRGINIA LIMITED LIABILITY COMPANY
 CITY OF WILLIAMSBURG VIRGINIA



No.	DATE	REVISION / COMMENT / NOTE	BY
		City of Williamsburg & County of James City Circuit Court: This PLAT was recorded on 14 June 2002 at 3:00 PM, PB 26, PG 47-52. DOCUMENT # 021064. BETSY B. WOOLRIDGE, CLERK. Betsy B. Woolridge, Dep. Clerk	

Designed GTW/ADS	Drawn AWT/JFS
Scale 1" = 4'	Date 5/31/02
Project No. 8395-6	
Drawing No. 6 OF 6	