

CURVE DATA - R/W ENTRANCE

Nº	DELTA	RADIUS	LENGTH	TANGENT
1-A	0°30'48"	1655.00'	43.70'	21.88'
2-A	02°51'31"	1605.00'	80.08'	40.08'
3-A	04°23'50"	1655.00'	127.01'	63.54'
4-A	02°41'18"	1705.00'	80.00'	40.01'

BUILDING No.	UNIT TYPE	UNIT No.	ADDRESS	PARKING No.
400	AR	4-401	401 SETTLEMENT DRIVE	74
400	B	4-402	402 SETTLEMENT DRIVE	73
400	A	4-403	403 SETTLEMENT DRIVE	72
400	E	4-404	404 SETTLEMENT DRIVE	71
400	C	4-405	405 SETTLEMENT DRIVE	70
400	D	4-406	406 SETTLEMENT DRIVE	69
400	F	4-407	407 SETTLEMENT DRIVE	68
400	DR	4-408	408 SETTLEMENT DRIVE	64
400	CR	4-409	409 SETTLEMENT DRIVE	62
400	ER	4-410	410 SETTLEMENT DRIVE	78

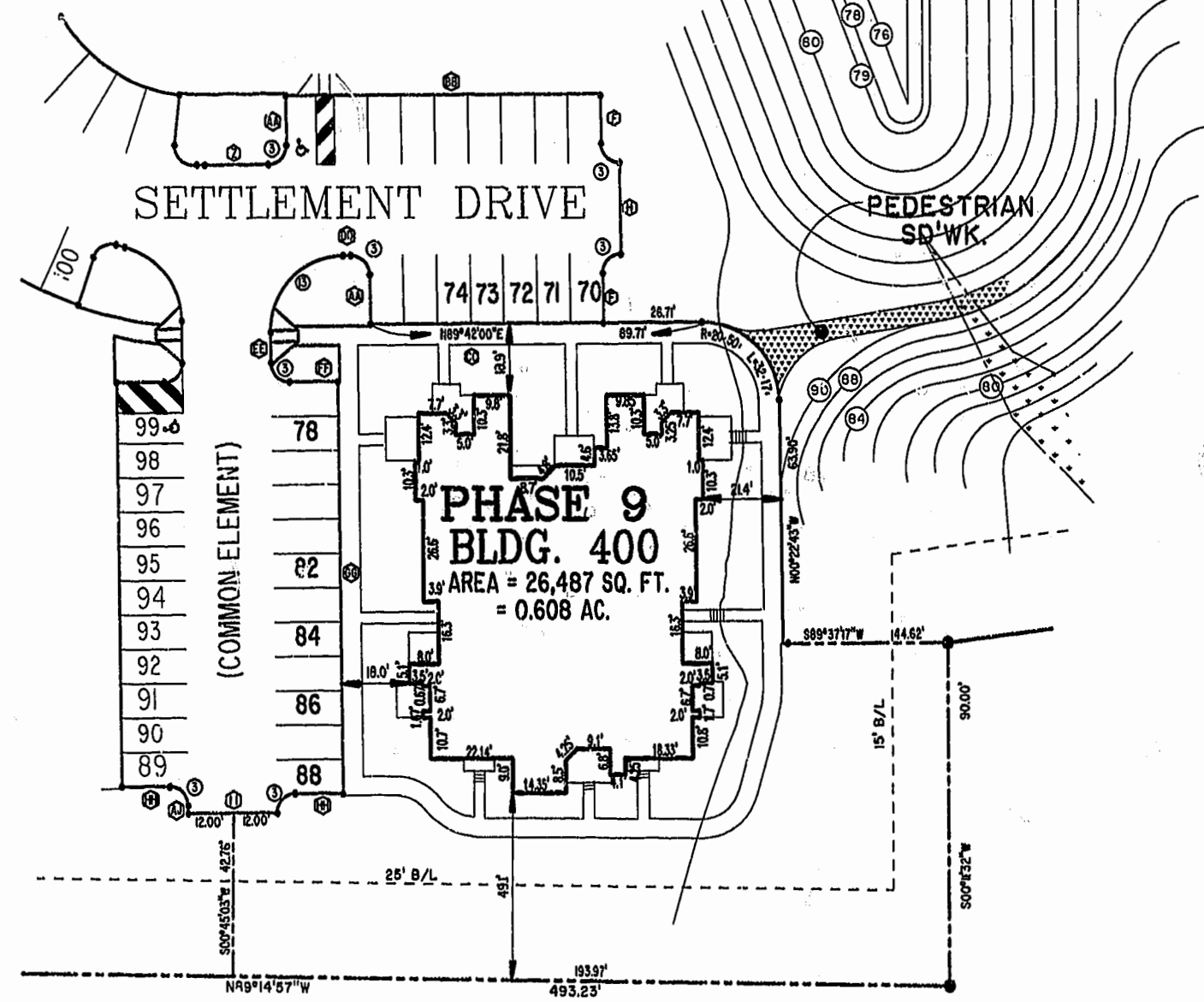
I CHRISTOPHER D. CAPOZZI, A CERTIFIED LAND SURVEYOR, DO HEREBY CERTIFY THAT THIS PLAT IS ACCURATE, AND THAT IT COMPLIES WITH THE PROVISIONS OF SECTION 55 - 79.58A OF THE CODE OF VIRGINIA. I FURTHER HEREBY CERTIFY THAT ALL UNITS OR PORTIONS THEREOF DEPICTED HEREON HAVE BEEN SUBSTANTIALLY COMPLETED.

THE UNDERSIGNED CERTIFIED LAND SURVEYOR CERTIFIES THAT HE HAS READ SECTION 55 - 79.58B OF THE CODE OF VIRGINIA, AND FINDS THIS PLAT TO BE ACCURATE AND IN COMPLIANCE WITH THE CODE. I FURTHER CERTIFY THAT ALL UNITS OR PORTIONS THEREOF DEPICTED HEREON HAVE BEEN SUBSTANTIALLY COMPLETED.

9-1-01
DATE

CS
LAND SURVEYOR No. 002398

SCALE: 1" = 25'



- NOTES:
1. THE TOTAL AREA OF SITE IS 410,669 SQ.FT. (9.611 AC.) OF WHICH 98,856 SQ.FT. (2.269 AC.) IS ADDITIONAL LAND.
 2. THE AREA OF THE SUBMITTED LAND IS 319,813 SQ.FT. (7.342) AC.)
 3. THE COMMON AREA IS TO BE THE RESPONSIBILITY OF THE CONDOMINIUM ASSOCIATION AND HAS A TOTAL AREA OF 2.256 AC.

City of Williamsburg & County of James City
Circuit Court: This PLAT was recorded on
14 February 2002
at 10:00 AM PM. PB. 98 PG. 25-29
DOCUMENT # 020309
BETSY B. WOOLRIDGE, CLERK
Betsy B. Woolridge Dep. Clerk

		DRAWN BY: HJS COMP BY: GJR CHECKED BY: HBA	DATE: 08/31/01 DATE: 08/31/98 DATE: 08/31/01	BRISTOL COMMONS A CONDOMINIUM COMMUNITY PHASE NINE FOR KEY GROUP, LLC CITY OF WILLIAMSBURG, VIRGINIA
	325 Volvo Parkway Chesapeake, VA 23320 (757) 547-9531		SIZE: C CONTRACT NO: 98062 DISK/BOX: 123K/15 FILENAME: BRISTOL9.DWG REV.: SCALE: 1" = 25' DATE: 08/31/01 SHEET 1 of 4	

#020309

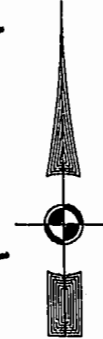
85 PAGE 26

NOW OR FORMERLY
COLLEGE OF WILLIAM & MARY



IRON BOUND ROAD

(APPROX. R/W)



T.P. 372--(OA)--00-028
NOW OR FORMERLY
JEROME & EVELYN RANDOLPH
(D.B. 30, PG. 470)
ZONE: RM-2

T.P. 372--(OA)--00-030
NOW OR FORMERLY
JEROME & EVELYN RANDOLPH
(D.B. 37, PG. 379)
ZONE: RM-2

T.P. 372--(05)--00-001
NOW OR FORMERLY
CHESAPEAKE MEDIA, INC.
(D.B. 74, PG. 121)
(M.B. 42, PG. 25)
ZONE: B-2 CONDITIONAL

MATCH LINE
SEE SHEET 3

40' R/W
ROLAND STREET

MATCH LINE
SEE SHEET 3

PHASE 6
SEE SHEET 3

ADDITIONAL LAND

RECREATION AREA

PEDESTRIAN
SD'WK.

BRISTOL COMMONS
A CONDOMINIUM COMMUNITY
PHASE NINE

FOR
KEY GROUP, LLC

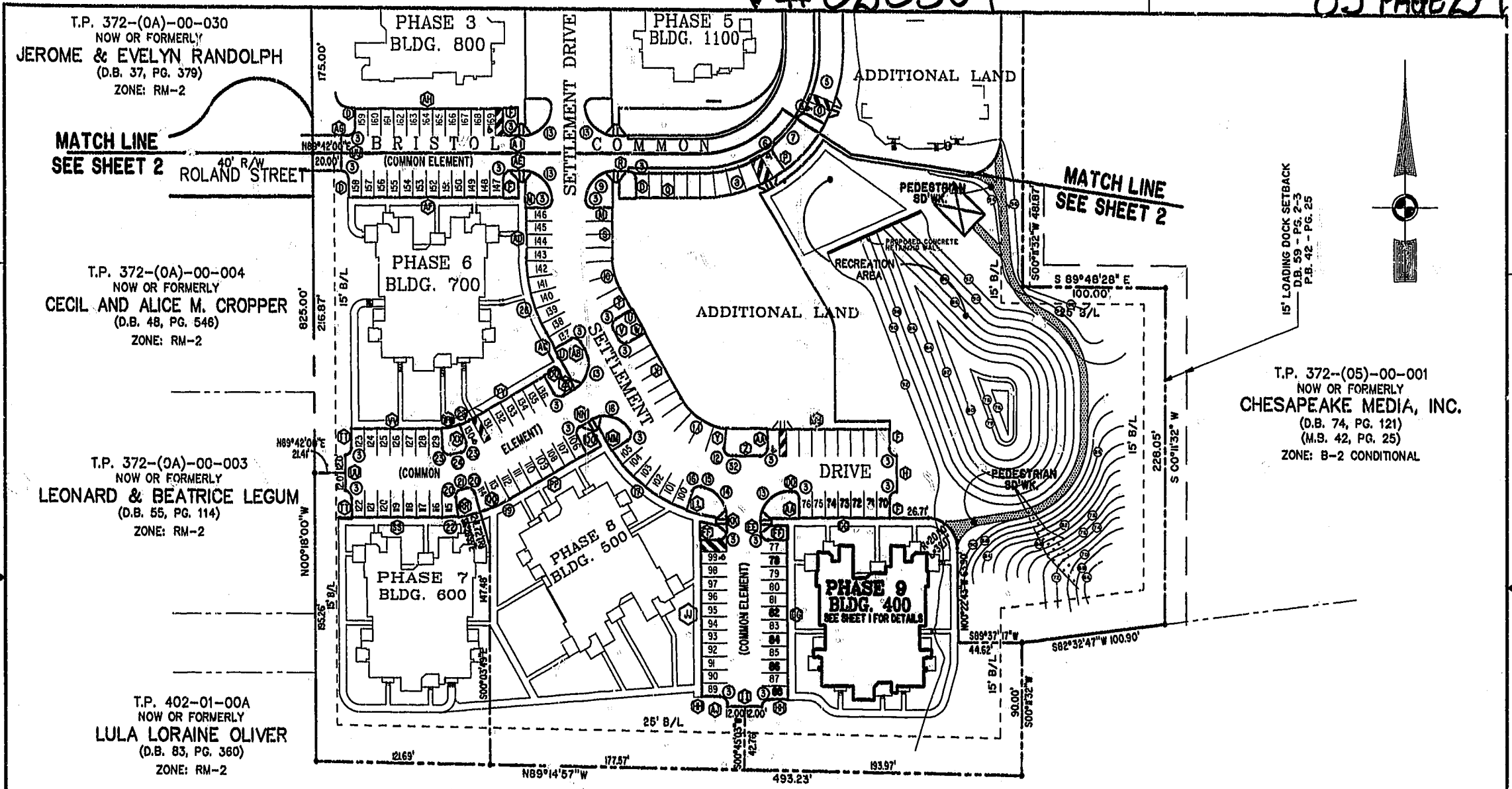
CITY OF WILLIAMSBURG, VIRGINIA

City of Williamsburg & County of James City
Circuit Court: This PLAT was recorded on
14 February 2002
at 10:50 AM P.M. P.B. 08 PG 25-28
DOCUMENT # 020309
BETSY B. WOOLRIDGE, CLERK
Betsy Woolridge Clerk

Hassell & Folkes, P.C. Engineers Surveyors Planners Chesapeake, VA 23320 (757) 547-9531	SIZE C	CONTRACT NO 98062	DISK/BOX 123K/15	FILENAME BRISTOL9.DWG	REV.
SCALE: 1"=50'		DATE: 08/31/01		SHEET 2 of 4	

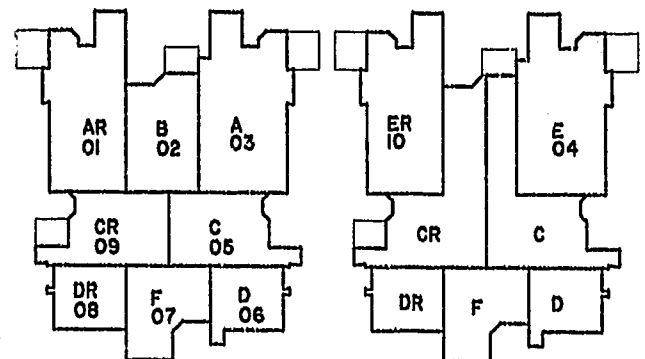
#020309

85 PAGE 27



(FIRST FLOOR)

(SECOND FLOOR)



TYPICAL CONDOMINIUM LAYOUT

T.P. 372-(04)-00-00-A2
 NOW OR FORMERLY
CITY OF WILLIAMSBURG
 (D.B. 121, PG. 321)
 (M.B. 36, PG. 77)

City of Williamsburg & County of James City
 Circuit Court: This PLAT was recorded on
14 February 2003
 at 10:50 AM/PM. PB 85 PG 25-29
 DOCUMENT # 020309
 BETSY B. WOOLRIDGE, CLERK
Betsy Woolridge, Clerk



BRISTOL COMMONS
 A CONDOMINIUM COMMUNITY
 PHASE NINE
 FOR
KEY GROUP, LLC
 CITY OF WILLIAMSBURG, VIRGINIA

Hassell & Folkes, P.C. Engineers Surveyors Planners Chesapeake, VA 23320 (757) 847-9531	SIZE	CONTRACT NO	DISK/BOX	FILENAME	REV.
	C	98062	123K/15	BRISTOL9.DWG	
SCALE: 1" = 60'		DATE: 08/31/01		SHEET 3 of 4	

COMMON AREA COURSE DATA
(PARKING)

Nº	BEARING	DISTANCE
A	S05°33'24"E	33.84'
B	S06°44'34"W	83.49'
C	N89°42'00"E	5.21'
D	N00°18'00"W	13.00'
E	N89°42'00"E	97.00'
F	S00°18'00"E	13.00'
G	N89°42'00"E	3.00'
H	S00°18'00"E	24.00'
I	S00°18'00"E	13.00'
J	S89°42'00"W	99.00'
K	N00°18'00"W	13.00'
L	S89°42'00"W	14.00'
M	N89°42'00"E	13.00'
N	S00°18'00"E	60.13'
O	N60°20'44"W	13.14'
P	S36°19'37"E	13.14'
Q	S89°42'00"W	43.44'
R	S89°42'00"W	10.00'
S	S00°18'00"E	33.91'
T	S30°00'00"E	16.32'
U	S60°00'00"W	13.00'
V	S30°00'00"E	8.00'
W	N60°00'00"E	13.00'
X	S30°00'00"E	50.83'
Y	S06°33'36"W	12.77'
Z	N89°42'00"E	18.81'
AA	N00°18'00"W	13.00'
BB	N89°42'00"E	83.00'
CC	S89°42'00"W	63.00'
DD	S89°42'00"W	2.00'
EE	S00°18'00"E	8.00'
FF	N89°42'00"E	13.00'
GG	S00°18'00"E	108.00'
HH	S89°42'00"W	13.00'
II	S89°42'00"W	24.00'
JJ	N00°18'00"W	106.00'
KK	N00°18'00"W	11.00'
LL	S18°39'10"W	13.14'
MM	N58°53'51"E	12.86'
NN	S60°00'00"W	9.00'
OO	S30°00'00"E	13.00'
PP	S60°00'00"W	62.42'
QQ	N16°20'53"W	13.15'
RR	S07°16'42"E	13.15'
SS	S89°42'00"W	62.80'
TT	N00°18'00"W	13.00'
UU	N00°18'00"W	24.00'
VV	N89°42'00"E	63.00'
WW	S09°05'44"E	12.74'
XX	N22°42'13"W	12.74'
YY	N60°00'00"E	62.42'
ZZ	N60°00'00"E	9.00'
AB	N30°00'00"W	5.60'
AC	N30°00'00"W	12.55'
AD	N00°18'00"W	33.91'

COMMON AREA CURVE DATA
(PARKING)

Nº	BEARING	DISTANCE
AE	S89°42'00"W	9.00'
AF	S89°42'00"W	108.00'
AG	N89°42'00"E	5.00'
AH	N89°42'00"E	103.00'
AI	N89°42'00"E	9.00'
AJ	N00°18'00"W	2.00'
AK	N89°42'00"E	24.00'
AL	N00°18'00"W	99.00'
AM	S00°18'00"E	85.00'
AN	S00°18'00"E	3.00'
AO	S00°18'00"E	8.00'
AP	N89°42'00"E	60.44'
AQ	N00°18'00"W	83.36'
AR	N05°33'24"W	167.81'
AS	S89°42'00"W	8.96'

Nº	DELTA	RADIUS	LENGTH	TANGENT
1	12°17'58"	150.00'	32.20'	16.16'
2	97°02'53"	10.00'	16.94'	11.31'
3	90°00'00"	5.00'	7.85'	5.00'
4	180°00'00"	5.00'	15.71'	-----
5	29°57'19"	100.00'	52.28'	26.78'
6	86°42'19"	5.00'	7.57'	4.72'
7	17°28'45"	82.00'	24.94'	12.57'
8	36°01'38"	100.00'	62.88'	32.32'
9	90°00'00"	20.00'	31.42'	20.00'
10	29°42'00"	42.00'	21.77'	11.4'
11	53°26'24"	42.00'	39.17'	21.4'
12	95°12'57"	5.00'	8.3'	5.48'
13	90°00'00"	20.00'	31.42'	20.00'
14	75°59'06"	20.00'	26.82'	15.62'
15	0°43'02"	84.00'	2.52'	1.26'
16	06°46'46"	5.00'	7.57'	4.73'
17	37°26'09"	102.00'	66.64'	34.86'
18	88°53'54"	20.00'	31.03'	19.62'
19	13°39'05"	96.00'	22.87'	11.49'
20	86°32'47"	5.00'	7.55'	4.71'
21	02°09'47"	78.00'	2.94'	1.47'
22	06°58'42"	96.00'	11.69'	5.85'
23	95°51'24"	5.00'	8.37'	5.54'
24	05°53'41"	54.00'	9.33'	4.67'
25	07°17'47"	36.00'	4.58'	2.30'
26	29°42'00"	102.00'	52.87'	27.04'
27	82°20'07"	5.00'	7.19'	4.37'
28	98°10'35"	20.00'	34.27'	23.08'
29	84°16'56"	20.00'	29.42'	18.10'
30	10°26'59"	5.00'	8.85'	6.1'
31	90°00'00"	58.00'	9.11'	58.00'
32	0°38'39"	60.00'	1.72'	0.86'

CHORD = N39°34'30"W 7.74'

City of Williamsburg & County of James City
 Circuit Court: This PLAT was recorded on
 14 February 2002
 at 10:50 AM/PM, PB 85, PG 25-28
 DOCUMENT # 020309
 BETSY B. WOOLRIDGE, CLERK



BRISTOL COMMONS
 A CONDOMINIUM COMMUNITY
 PHASE NINE
 FOR
 KEY GROUP, LLC
 CITY OF WILLIAMSBURG, VIRGINIA

Hassell & Folkes, P.C. Engineers Surveyors Planners Cheeapeake, VA 23320 (757) 547-9531	SIZE C	CONTRACT NO 98062	DISK/BOX 123K/15	FILENAME BRISTOL9.DWG	REV.
SCALE: N/A		DATE: 08/31/01		SHEET 4 of 4	