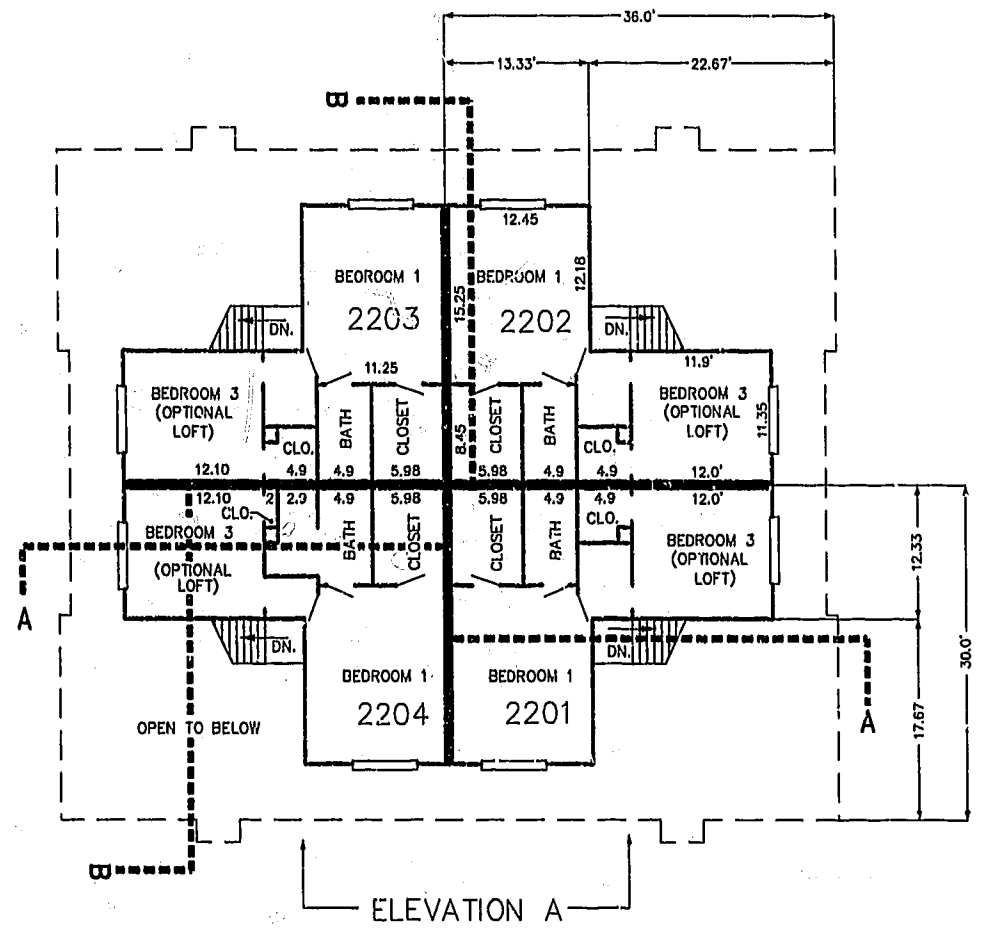


FIRST FLOOR PLAN (UNIT #2202 IS TYPICAL)



SECOND FLOOR PLAN (UNIT #2202 IS TYPICAL)

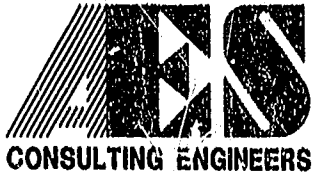


ELEVATION A



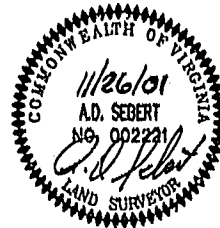
ELEVATION B

11.30.01-09:49 8395p225.dwg JFS



5248 Olde Towne Road, Suite 1
 Williamsburg, Virginia 23188
 (757) 253-0040
 Fax (757) 220-8994

PLAT OF CONDOMINIUM
 WESTGATE AT WILLIAMSBURG,
 A CONDOMINIUM
 PHASE TWENTY-TWO
 OWNED BY: 752 L.L.C.,
 A VIRGINIA LIMITED LIABILITY COMPANY
 CITY OF WILLIAMSBURG VIRGINIA



City of Williamsburg & County of James City Circuit Court: This PLAT was recorded on 10 Nov 2002 at 2:14 PM, PB 89 PG 75-80 DOCUMENT # 020063 BETSY B. WOOLRIDGE, CLERK	
No.	DATE
REVISION / COMMENT / NOTE	
BY	

Designed GTW/ADS	Drawn JFS
Scale 1" = 10'	Date 11/26/01
Project No. 8395-6	
Drawing No. 5 OF 6	