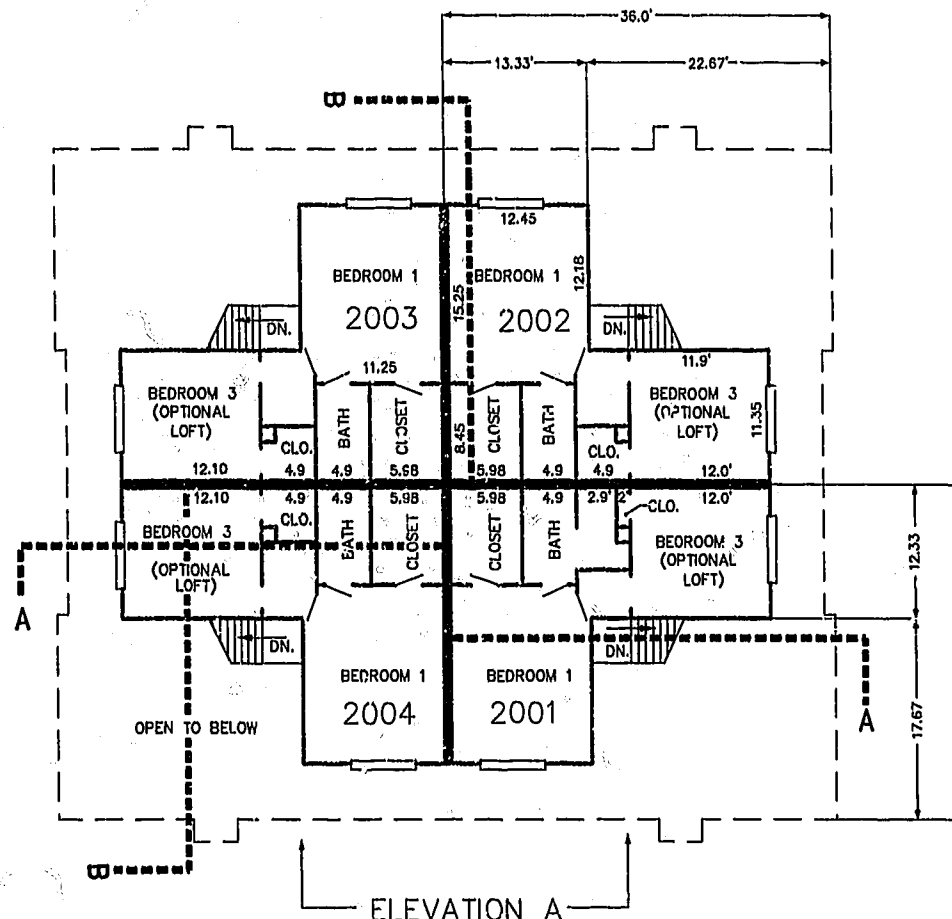
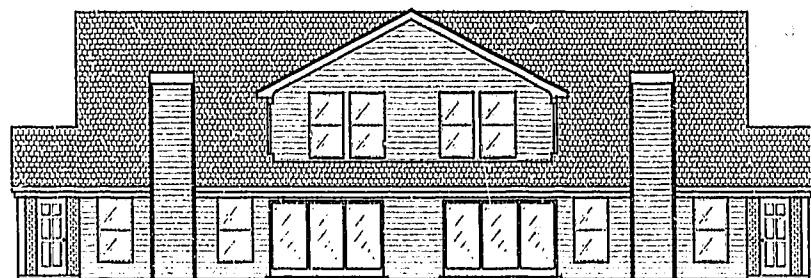


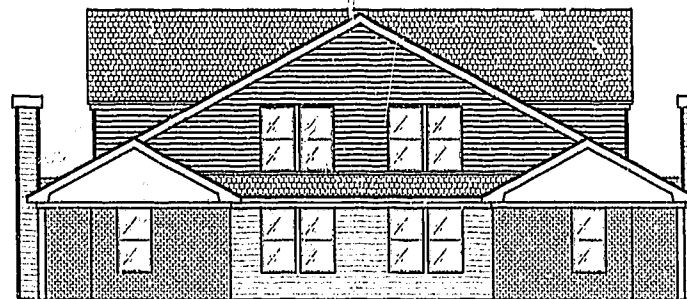
FIRST FLOOR PLAN
(UNIT #2002 IS TYPICAL)



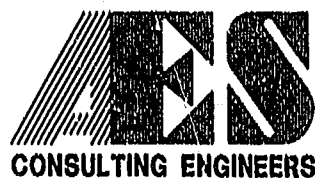
SECOND FLOOR PLAN
(UNIT #2002 IS TYPICAL)



ELEVATION A



ELEVATION B



5248 Olde Towne Road, Suite 1
Williamsburg, Virginia 23188
(757) 253-0040
Fax (757) 220-8994

PLAT OF CONDOMINIUM
WESTGATE AT WILLIAMSBURG,
A CONDOMINIUM
PHASE TWENTY
OWNED BY: 752 L.L.C.,
A VIRGINIA LIMITED LIABILITY COMPANY
CITY OF WILLIAMSBURG VIRGINIA



No.	DATE	REVISION / COMMENT / NOTE	BY

City of Williamsburg & County of James City
Circuit Court: This Plat was recorded on
10/28/01 (see 2002)
at 2:10 PM, PB 27 PG 63-68
DOCUMENT # 220061
BETSY B. WOOLRIDGE, CLERK
Betsy B. Woolridge, Dep. Clerk

Designed GTW/ADS	Drawn JFS
Scale 1" = 10'	Date 11/12/01
Project No. 8395-6	
Drawing No. 5 OF 6	

8395-6-05-488
11/12/01-10:57