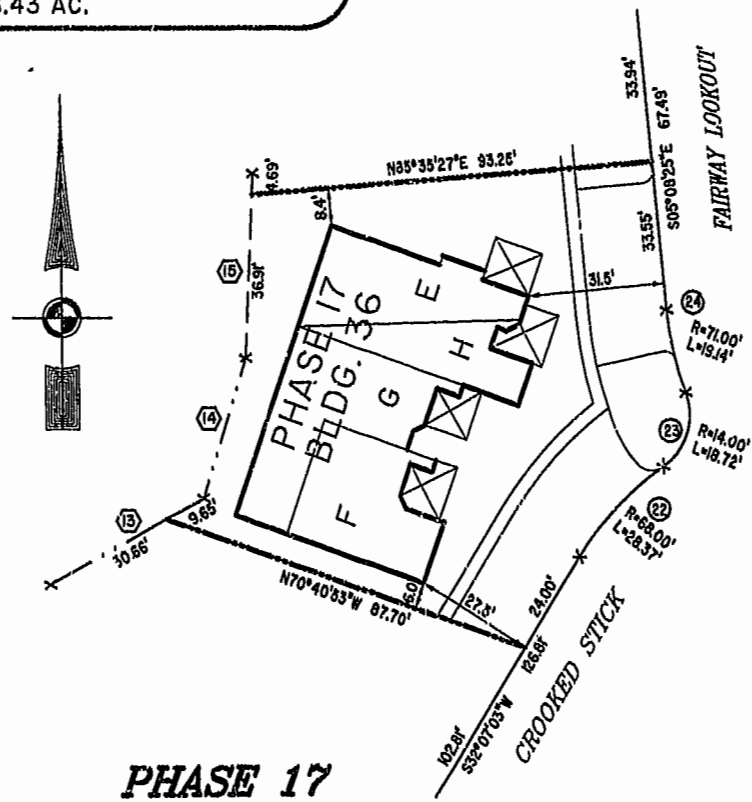
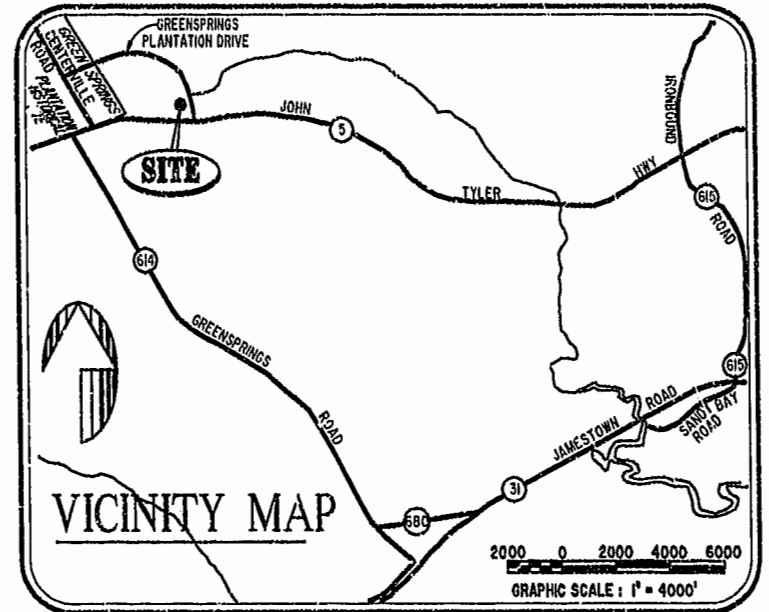


| BUILDING NUMBER | UNIT NUMBER | UNIT TYPE | STREET ADDRESS      |
|-----------------|-------------|-----------|---------------------|
| 36              | 36-468      | E         | 468 FAIRWAY LOOKOUT |
| 36              | 36-466      | H         | 466 FAIRWAY LOOKOUT |
| 36              | 36-464      | G         | 464 CROOKED STICK   |
| 36              | 36-462      | F         | 462 CROOKED STICK   |

**NOTES:**

1. THE TOTAL AREA OF SITE IS 1,222,568 SQ.FT. (28.07 AC.) OF WHICH 104,529 SQ.FT. (2.402 AC.) IS ADDITIONAL LAND.
2. THE AREA OF THE SUBMITTED LAND IS 1,117,939 SQ.FT. (25.664 AC.)
3. THE COMMON AREA IS TO BE THE RESPONSIBILITY OF THE CONDOMINIUM ASSOCIATION AND HAS A TOTAL AREA OF 16.43 AC.



**PHASE 17**

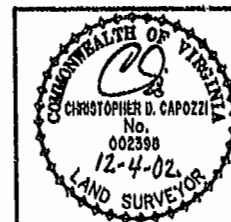
AREA = 9,089 SQ. FT. = 0.209 AC.

I CHRISTOPHER D. CAPOZZI, A CERTIFIED LAND SURVEYOR, DO HEREBY CERTIFY THAT THIS PLAT IS ACCURATE, AND THAT IT COMPLIES WITH THE PROVISIONS OF SECTION 55 - 79.58A OF THE CODE OF VIRGINIA. I FURTHER HEREBY CERTIFY THAT ALL UNITS OR PORTIONS THEREOF DEPICTED HEREON HAVE BEEN SUBSTANTIALLY COMPLETED.

THE UNDERSIGNED CERTIFIED LAND SURVEYOR CERTIFIES THAT HE HAS READ SECTION 55 - 79.58B OF THE CODE OF VIRGINIA, AND FINDS THIS PLAT TO BE ACCURATE AND IN COMPLIANCE WITH THE CODE. I FURTHER CERTIFY THAT ALL UNITS OR PORTIONS THEREOF DEPICTED HEREON HAVE BEEN SUBSTANTIALLY COMPLETED.

12-4-02  
DATE CHRISTOPHER D. CAPOZZI, VA. L.S. No. 002398

City of Williamsburg & County of James City  
Circuit Court: This PLAT was recorded on  
12 Dec 2002  
at 11:50 AM/PM, PB. 88, PG. 92-97  
DOCUMENT # 020029798  
By: [Signature] Clerk



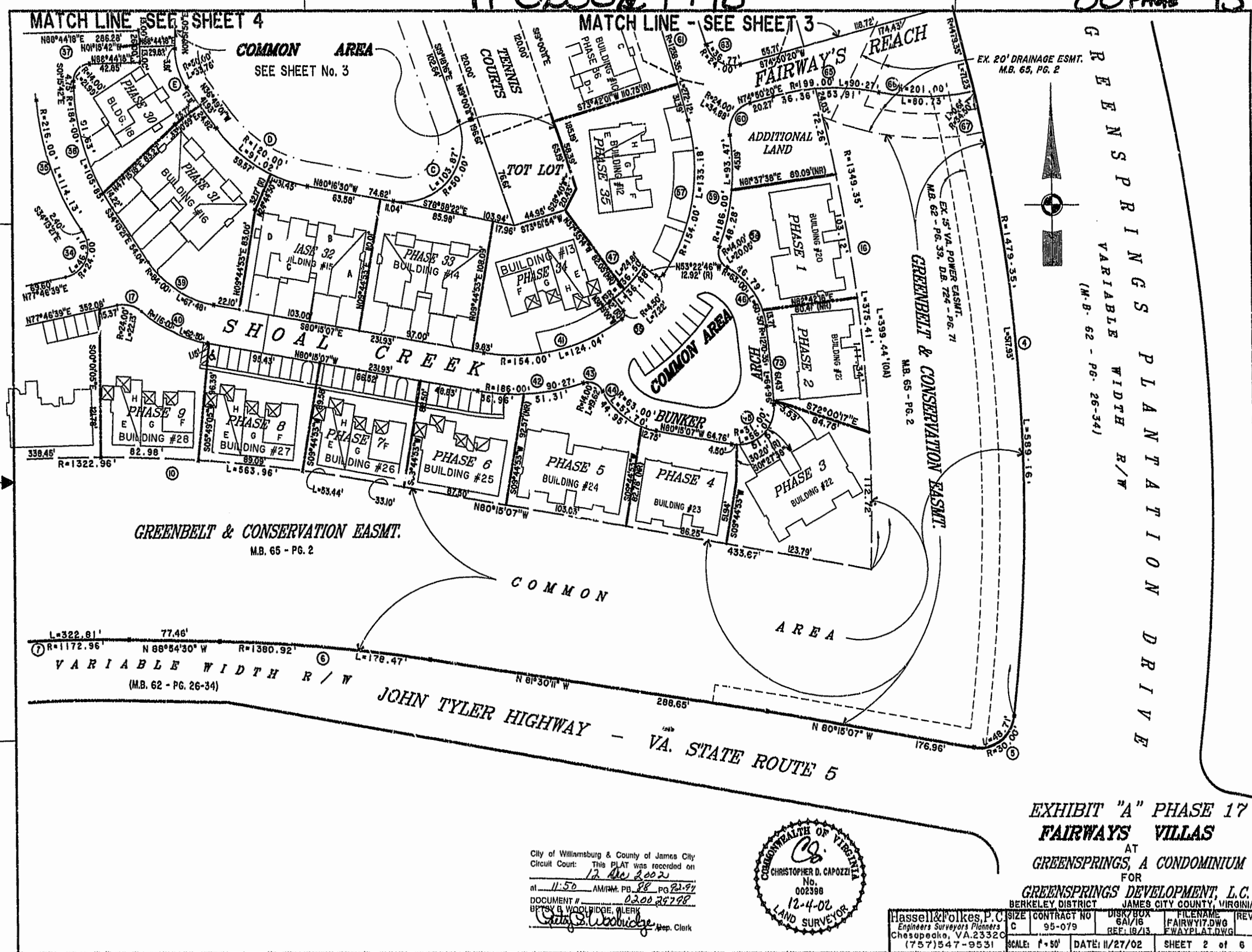
Hassell & Folkes, P.C.  
Engineers Surveyors Planners  
325 Volvo Parkway  
Chesapeake, VA. 23320  
(757) 547-9531

|             |          |
|-------------|----------|
| DRAWN BY:   | DATE     |
| HJS         | 11/27/02 |
| COMP BY:    | DATE     |
| HF          |          |
| CHECKED BY: | DATE     |
| HBA         | 11/27/02 |

|   |                |              |              |
|---|----------------|--------------|--------------|
| EXHIBIT "A" PHASE 17  |                |              |              |
| <b>FAIRWAYS VILLAS</b>  |                |              |              |
| AT GREENSPRINGS, A CONDOMINIUM FOR GREENSPRINGS DEVELOPMENT, L.C. |                |              |              |
| BERKELEY DISTRICT JAMES CITY COUNTY, VIRGINIA                     |                |              |              |
| SIZE  | CONTRACT       | DISK/BOX     | FILENAME     |
| C   | 95-079         | 6A/16        | FAIRWY17.DWG |
|   |                | REF: 18/13   | FWAYPLAT.DWG |
| SCALE: 1" = 20'   | DATE: 11/27/02 | SHEET 1 of 6 |              |

#020029798

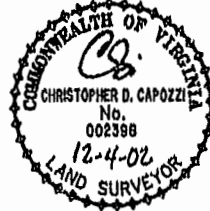
88 PAGE 93



GREENBELT & CONSERVATION EASMT.  
 EX. 20' DRAINAGE ESMT. M.B. 65, PG. 2  
 EX. 5' VA POWER ESMT. M.B. 62 - PG. 39, DE. 726 - PG. 71  
 EX. 5' VA POWER ESMT. M.B. 62 - PG. 34  
 GREENBELT & CONSERVATION EASMT. M.B. 65 - PG. 2  
 GREENBELT & CONSERVATION EASMT. M.B. 62 - PG. 26-34  
 GREENBELT & CONSERVATION EASMT. M.B. 65 - PG. 2  
 GREENBELT & CONSERVATION EASMT. M.B. 62 - PG. 26-34  
 GREENBELT & CONSERVATION EASMT. M.B. 65 - PG. 2  
 GREENBELT & CONSERVATION EASMT. M.B. 62 - PG. 26-34

EXHIBIT "A" PHASE 17  
 FAIRWAYS VILLAS  
 AT  
 GREENSPRINGS, A CONDOMINIUM  
 FOR  
 GREENSPRINGS DEVELOPMENT, L.C.  
 BERKELEY DISTRICT JAMES CITY COUNTY, VIRGINIA

City of Williamsburg & County of James City  
 Circuit Court: This PLAT was recorded on  
 12 Nov 2002  
 at 11:50 AM/PM, PG. 88, PG. 20-91  
 DOCUMENT # 020029798  
 BETSY B. WOOLRIDGE, CLERK  
 City of Williamsburg, VA  
 Dep. Clerk



|  |                                |                               |  |      |
|--|--------------------------------|-------------------------------|--|------|
| Hassell & Folkes, P.C.<br>Engineers Surveyors Planners<br>Chesapeake, VA 23320<br>(757) 547-9531 | SIZE: C<br>CONTRACT NO: 95-079 | DISK/BOX: 6A/16<br>REF: 16/13 | FILENAME: FAIRWAY17.DWG<br>FILE: FAIRWAY17.DWG | REV. |
| SCALE: 1"=50'  |                                | DATE: 11/27/02                | SHEET 2 of 6                                   |      |

City of Williamsburg & County of James City  
Circuit Court: This PLAT was recorded on  
12 Dec 2002  
at 11:50 AM/PM, PB. 88, PG. 92-97  
DOCUMENT # 020029798  
BETSY B. WOOLRIDGE, CLERK  
Betsy B. Woolridge, Clerk

46-1-01-0-0001  
"GREENSPRINGS PLANTATION"  
(OB 322, PG 254)

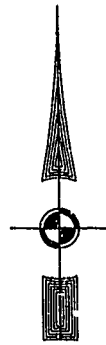
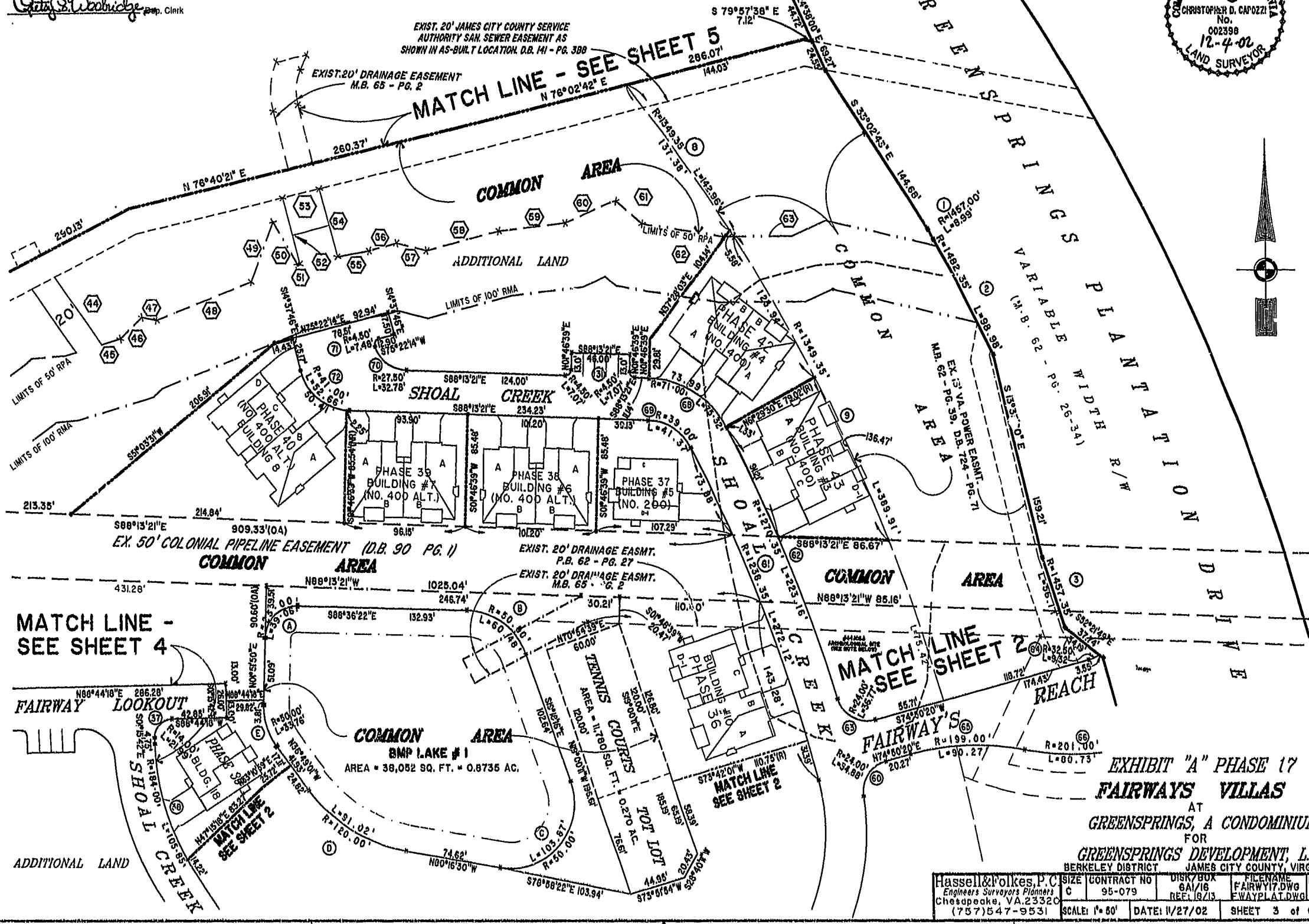


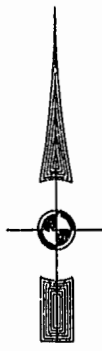
EXHIBIT "A" PHASE 17  
FAIRWAYS VILLAS  
AT  
GREENSPRINGS, A CONDOMINIUM  
FOR  
GREENSPRINGS DEVELOPMENT, L.C.  
BERKELEY DISTRICT JAMES CITY COUNTY, VIRGINIA

|   |                                |                |                               |  |       |
|---|--------------------------------|----------------|-------------------------------|--|-------|
| Hassell & Polkes, P.C.<br>Engineers Surveyors Planners<br>Chesapeake, VA 23320<br>(757)547-9531 | SIZE: C<br>CONTRACT NO: 95-079 | DATE: 11/27/02 | DISK/BOX: 6A/18<br>REF: 18/13 | FILENAME: FAIRWAY17.DWG<br>E WAYPLAT.DWG | REV.: |
| SCALE: 1"=50'   | DATE: 11/27/02                 | SHEET 3 of 6   |                               |  |       |

#020029798

88 PAGE 95

EXIST. 20' JAMES CITY COUNTY SERVICE AUTHORITY SAN. SEWER EASEMENT AS SHOWN IN AS-BUILT LOCATION. D.B. 141 - PG. 388

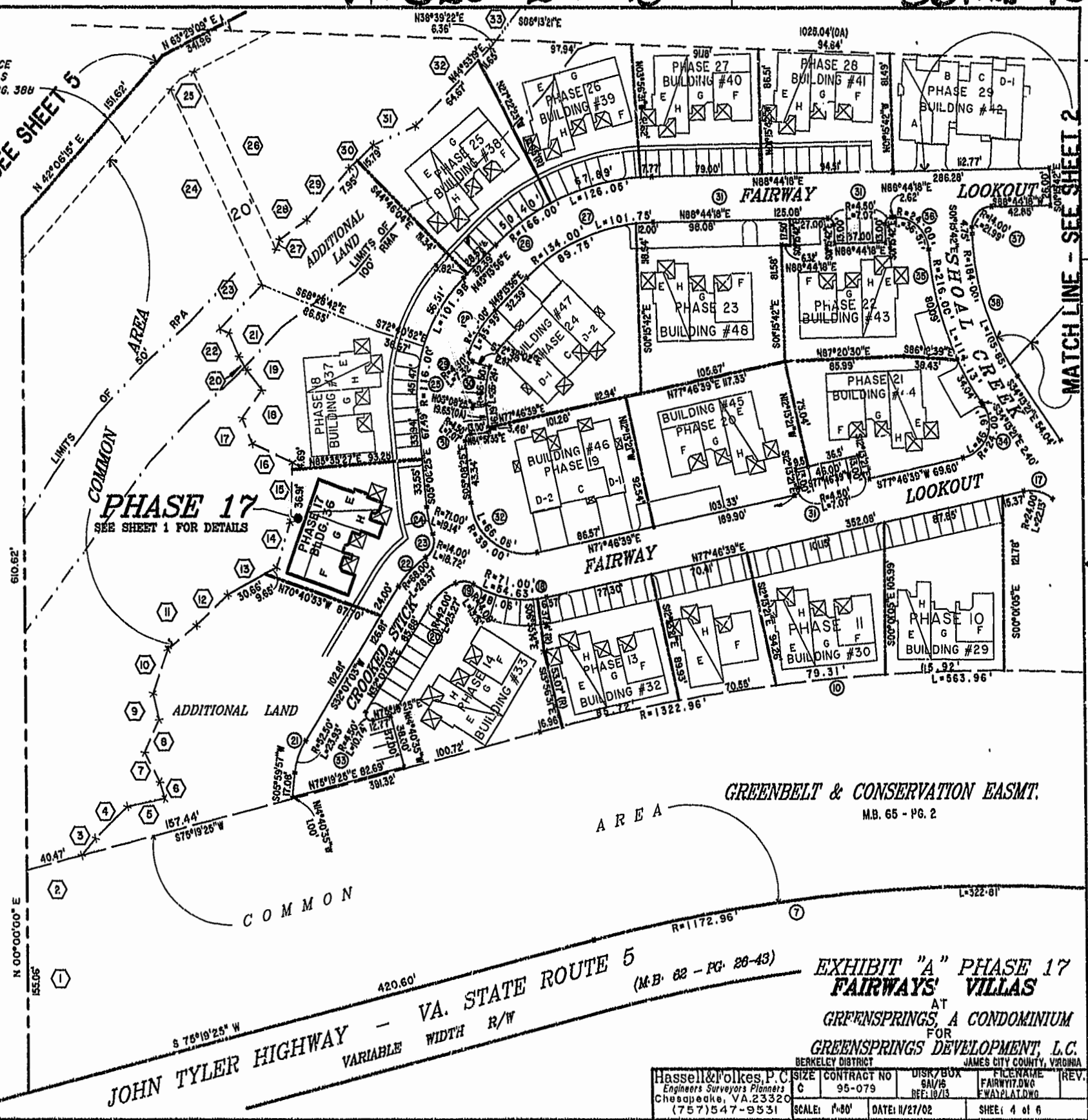


MATCH LINE - SEE SHEET 5

MATCH LINE - SEE SHEET 2

46-1-01-0-0001  
"GREENSPRINGS PLANTATION"  
(DB 322, PG 254)

City of Williamsburg & County of James City  
Circuit Court: This PLAT was recorded on  
12 Dec 2002  
at 11:50 AM/PM, PB 98 PG 92-97  
DOCUMENT # 020029798  
BETSY B. WOOLHIDGE, CLERK  
*Betsy B. Woolhidge*, Clerk



GREENBELT & CONSERVATION EASMT.  
MB. 65 - PG. 2

JOHN TYLER HIGHWAY - VA. STATE ROUTE 5  
VARIABLE WIDTH R/W  
(M.B. 82 - PG. 88-43)

EXHIBIT "A" PHASE 17  
FAIRWAYS' VILLAS  
AT  
GREENSPRINGS A CONDOMINIUM  
FOR  
GREENSPRINGS DEVELOPMENT, L.C.  
BERKELEY DISTRICT JAMES CITY COUNTY, VIRGINIA

|   |                       |                                  |   |                |
|---|-----------------------|----------------------------------|---|----------------|
| Hassell & Folkes, P.C.<br>Engineers Surveyors Planners<br>Chesapeake, VA. 23320<br>(757) 547-9531 | CONTRACT NO<br>95-079 | DISK/BOX<br>SAL/16<br>REF: 10/13 | FILENAME<br>FAIRW17.DWG<br>FW17PLAT.DWG | REV.<br>4 of 6 |
| SCALE: 1"=80'   | DATE: 11/27/02        |                                  |   |                |

City of Williamsburg & County of James City  
 Circuit Court: This PLAT was recorded on  
 12 Dec. 2002  
 at 11:50 A.M. P.B. 88, PG. 27  
 DOCUMENT # 020029798  
 BETTY B. WOOLBRIDGE, CLERK  
 [Signature] Dep. Clerk

46-1-01-0-0001  
 "GREENSPRINGS PLANTATION"  
 (DB 322, PG 254)

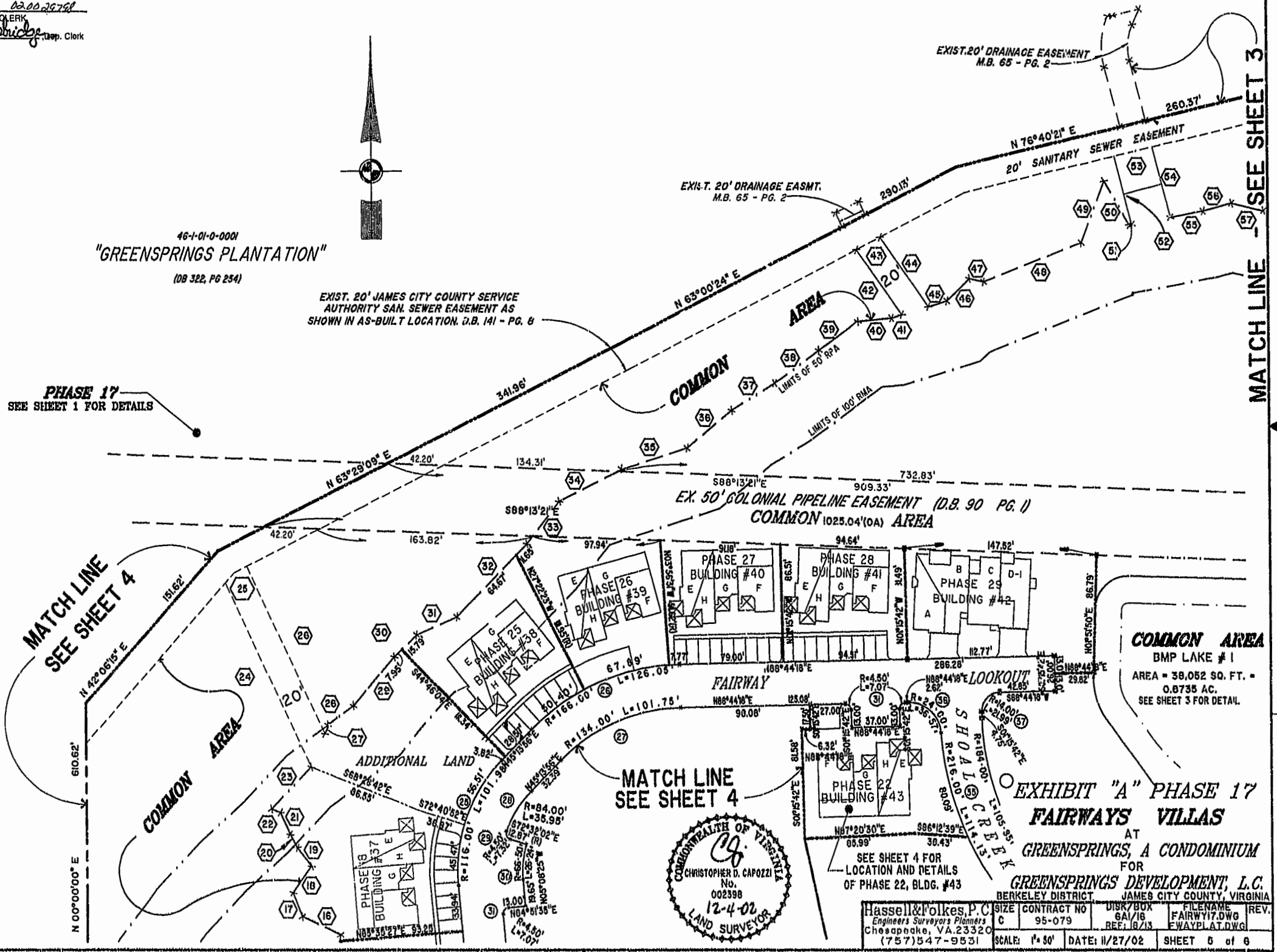
EXIST. 20' JAMES CITY COUNTY SERVICE  
 AUTHORITY SAN. SEWER EASEMENT AS  
 SHOWN IN AS-BUILT LOCATION. D.B. 141 - PG. 8

PHASE 17  
 SEE SHEET 1 FOR DETAILS

MATCH LINE  
 SEE SHEET 4

MATCH LINE  
 SEE SHEET 4

MATCH LINE  
 SEE SHEET 3



**COMMON AREA**  
 BMP LAKE # 1  
 AREA = 38,052 SQ. FT. =  
 0.8735 AC.  
 SEE SHEET 3 FOR DETAIL.

**EXHIBIT "A" PHASE 17  
 FAIRWAYS VILLAS**  
 AT  
**GREENSPRINGS, A CONDOMINIUM**  
 FOR  
**GREENSPRINGS DEVELOPMENT, L.C.**  
 BERKELEY DISTRICT, JAMES CITY COUNTY, VIRGINIA



SEE SHEET 4 FOR  
 LOCATION AND DETAILS  
 OF PHASE 22, BLDG. #43

|  |                 |                |              |
|--|-----------------|----------------|--------------|
| Hassell & Folkes, P.C.<br>Engineers Surveyors Planners<br>Chesapeake, VA 23320<br>(757) 547-9531 | SCALE: 1" = 50' | DATE: 11/27/02 | SHEET 5 of 8 |
|--|-----------------|----------------|--------------|



