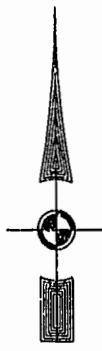


#020029798

88 PAGE 95

EXIST. 20' JAMES CITY COUNTY SERVICE AUTHORITY SAN. SEWER EASEMENT AS SHOWN IN AS-BUILT LOCATION. D.B. 141 - PG. 388

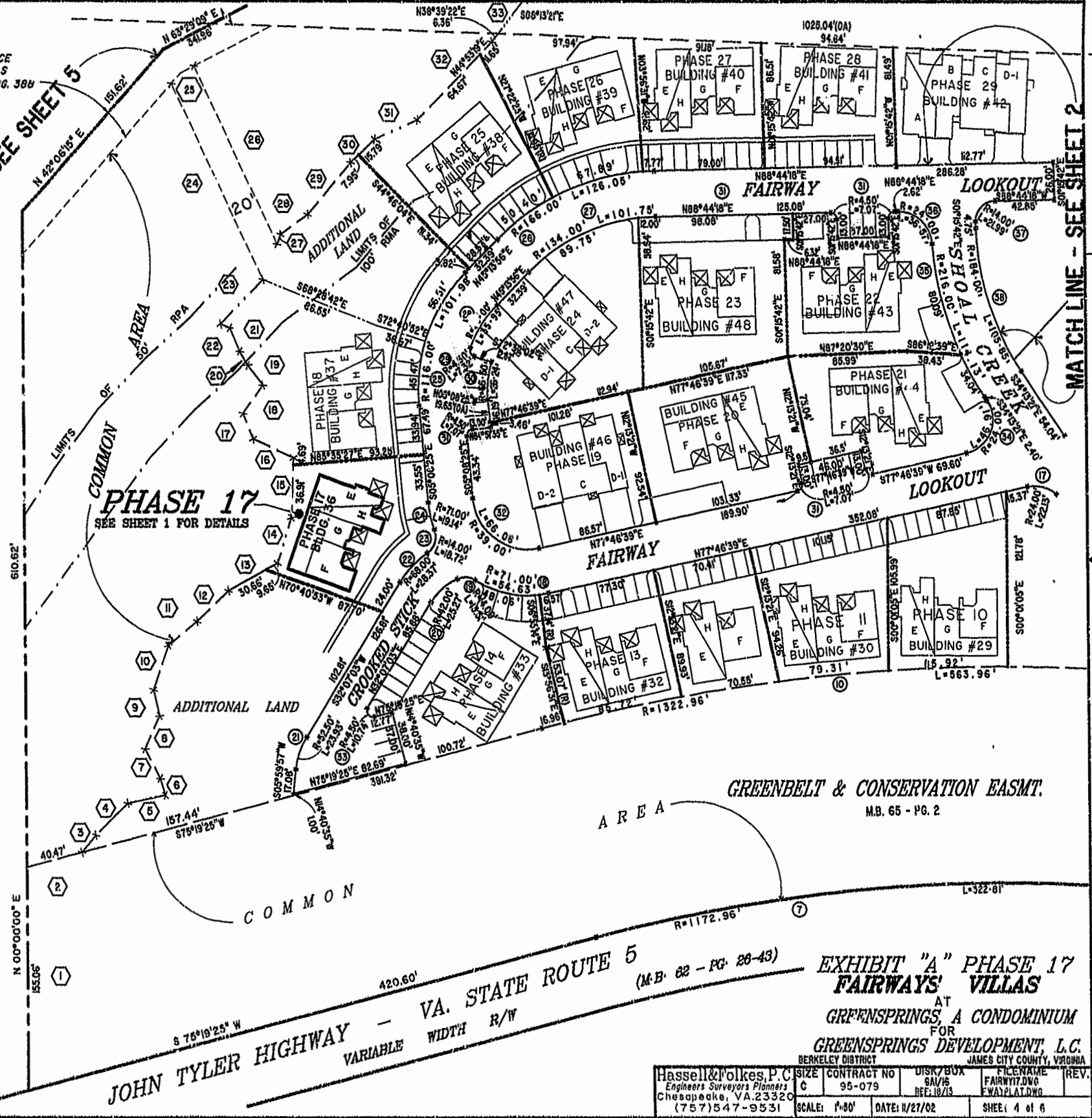


MATCH LINE - SEE SHEET 5

MATCH LINE - SEE SHEET 2

46-1-01-0-0001  
"GREENSPRINGS PLANTATION"  
(DB 322, PG 254)

City of Williamsburg & County of James City  
Circuit Court: This PLAT was recorded on  
12 Dec 2002  
at 11:50 AM/PM, PB 98 PG 92-97  
DOCUMENT # 020029798  
BETSY B. WOOLHIDGE, CLERK  
*Betsy B. Woolhidge*, Clerk



JOHN TYLER HIGHWAY - VA. STATE ROUTE 5 (M.B. 82 - PG. 88-43)  
VARIABLE WIDTH R/W

EXHIBIT "A" PHASE 17  
FAIRWAYS' VILLAS  
AT  
GREENSPRINGS A CONDOMINIUM  
FOR  
GREENSPRINGS DEVELOPMENT, L.C.  
BERKELEY DISTRICT JAMES CITY COUNTY, VIRGINIA

Hassell & Folkes, P.C. Engineers Surveyors Planners Chesapeake, VA. 23320 (757) 547-9531	CONTRACT NO 95-079	DISK/BOX SAL/16 REF: 10/13	FILENAME FAIRW17.DWG FW17PLAT.DWG	REV. 4 of 6
SCALE: 1"=80'	DATE: 11/27/02			