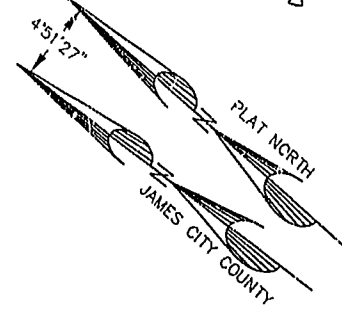


City of Williamsburg & County of James City
 Circuit Court: This PLAT was recorded on
 11 Dec 2002
 at 9:20 AM/PM: PB: 88 PG: 95/98
 DOCUMENT # 020029614
 Betsy B. Woolfidge, Clerk
 Betsy B. Woolfidge, App. Clerk

020029614

88 PAGE 86



SUBDIVISION OF
 POWHATAN SECONDARY
 OF WILLIAMSBURG
 PHASE VI-B
 POWHATAN DISTRICT
 JAMES CITY COUNTY, VIRGINIA
 SCALE: 1"=60' DATE: 7/1/02
 SHEET 2 OF 2

LANDMARK
DESIGN GROUP
 Engineers • Planners • Surveyors
 Landscape Architects • Environmental Consultants
 4029 Ironbound Road, Suite 100
 Williamsburg, VA 23188
 Tel. (757) 253-2075 Fax (757) 220-0049
 Email: lmdg@landmarkdsg.com

POWHATAN SECONDARY OF WILLIAMSBURG
 PHASE VI-A
 INSTR. #010024124

N/F POWHATAN ENTERPRISES, INC.
 ZONE R-4
 REMAINDER OF PARCEL 1-11 TAX MAP 38-3

DRAWN BY: LFV
 CHKD. BY: SAR
 PROJ. NO.: 780041-001.10
 DVA. NO.: 13399W