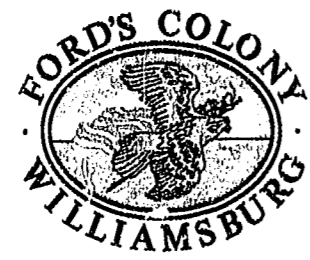


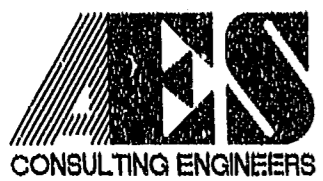
NOTE: THIS COMPOSITE PLAT IS TAKEN FROM RECORD INFORMATION AND DOES NOT REPRESENT A CURRENT FIELD SURVEY.



CONSERVATION EASEMENT AREA TABULATION

	AC.
PARCEL 3	21.61±
TOTAL AREA OF CONSERVATION EASEMENT	21.61±
TOTAL AREA OF UPLANDS WITHIN CONSERVATION EASEMENT	3.15±

LEA 05.09.02-10:34 565296P01.DWG



5248 Olde Towne Road, Suite 1
Williamsburg, Virginia 23188
(757) 253-0040
Fax (757) 220-8994

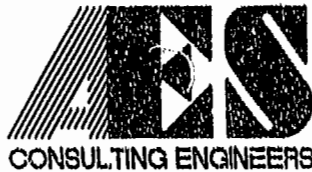
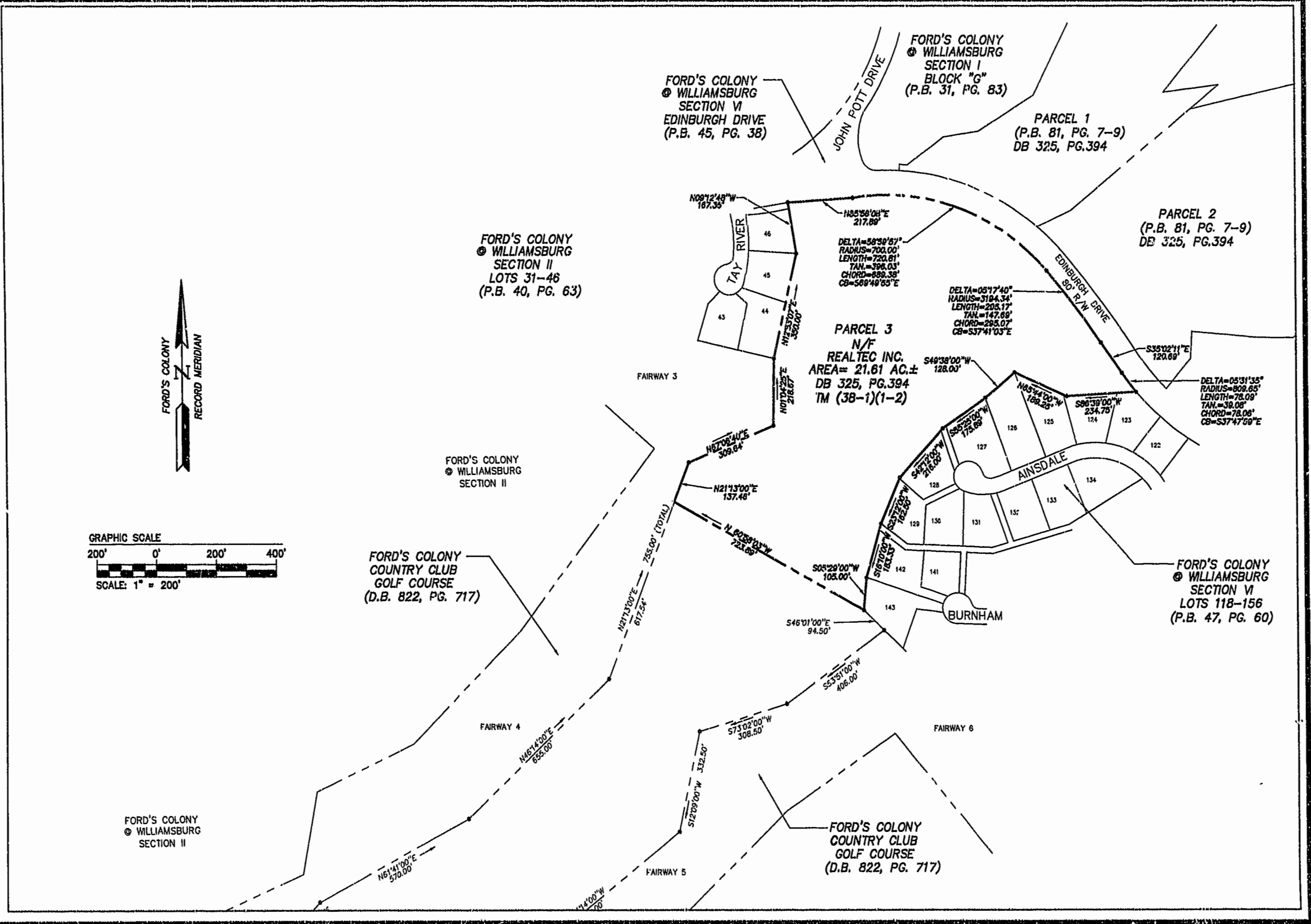
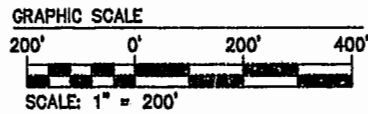
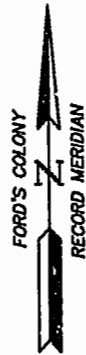
PLAT SHOWING A PROPOSED CONSERVATION AREA ON A PARCEL OF LAND BEING A PART OF FORD'S COLONY • WILLIAMSBURG
POWhatan DISTRICT JAMES CITY COUNTY VIRGINIA



City of Williamsburg & County of James City Circuit Court: This PLAT was recorded on	
7/01/02	
at 1:22 AM (M) PB 88 PG 70-71	
DOCUMENT # 020028346	
BETSY B. WOODRIDGE, CLERK	
Betsy Woodridge, Rep. Clerk	
No.	DATE
	REVISION / COMMENT / NOTE
	BY

Designed	Drawn
AES	CBR
Scale	Date
1"=1000'	5/7/02
Project No.	
5652-96	
Drawing No.	
1 OF 2	

05.09.02-10:36 565296P02.dwg LBA



5248 Old Towne Road, Suite 1
Williamsburg, Virginia 23188
(757) 253-0040
Fax (757) 220-8994

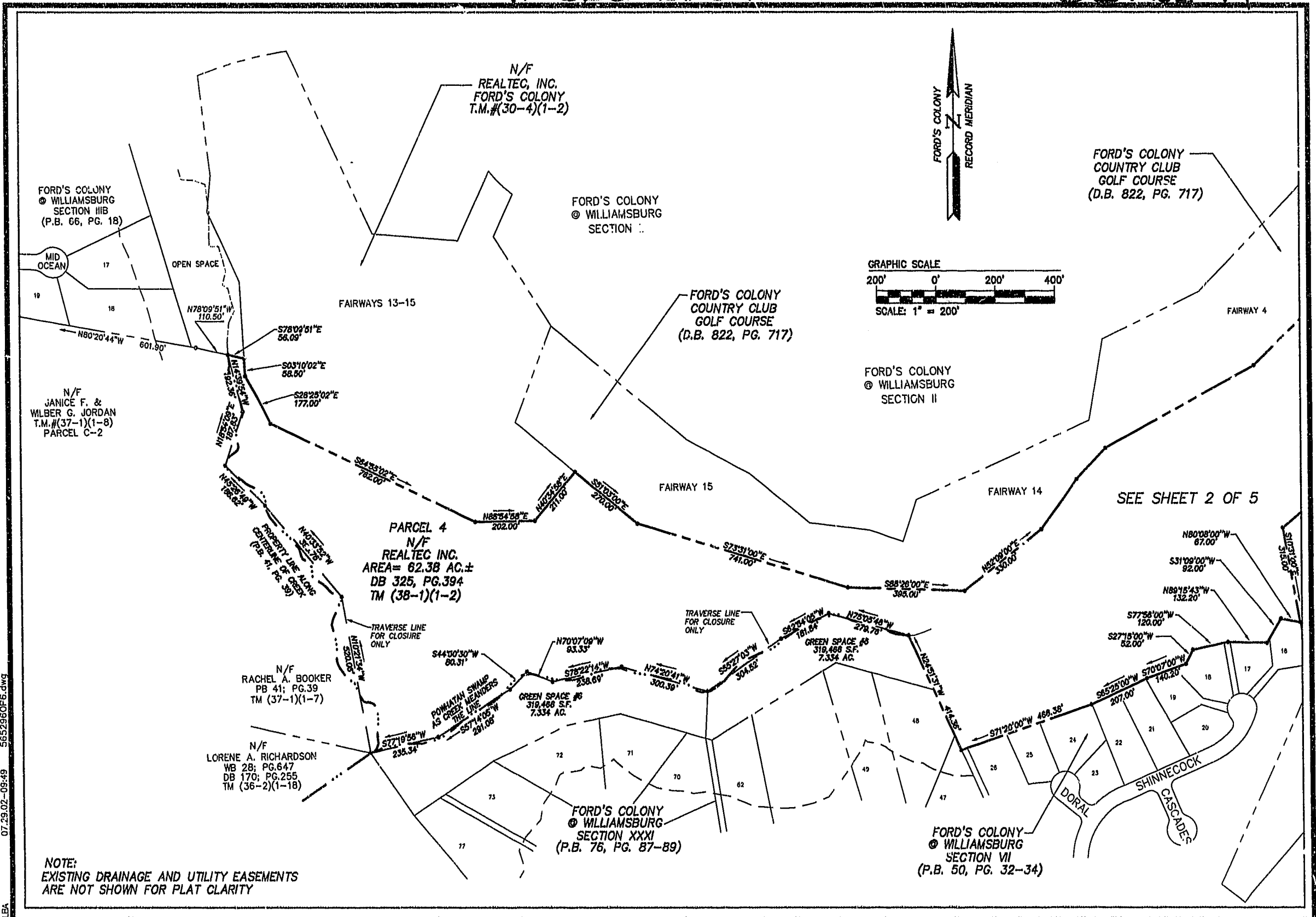
**PLAT SHOWING A PROPOSED
CONSERVATION AREA ON A PARCEL
OF LAND BEING A PART OF
FORD'S COLONY • WILLIAMSBURG**

POWhatan DISTRICT JAMES CITY COUNTY VIRGINIA

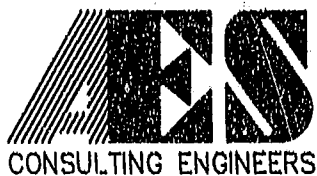


City of Williamsburg & County of James City Circuit Court: This PLAT was recorded on <u>Nov. 20, 2002</u> at <u>1:23</u> (A.M./P.M.) PG. <u>88</u> of <u>10-91</u>			
DOCUMENT # <u>020028346</u>			
BETSY B. WOOLRIDGE, CLERK			
<i>Betsy Woolridge</i> , Rep. Clerk			
No.	DATE	REVISION / COMMENT / NOTE	BY

Designed AES	Drawn LBA
Scale 1" = 200'	Date 5/7/02
Project No. 5652-96	
Drawing No. 2 OF 2	



07.29.02-09:49 5652960F6.dwg



5248 Olde Towne Road, Suite 1
Williamsburg, Virginia 23188
(757) 253-0040
Fax (757) 220-8994

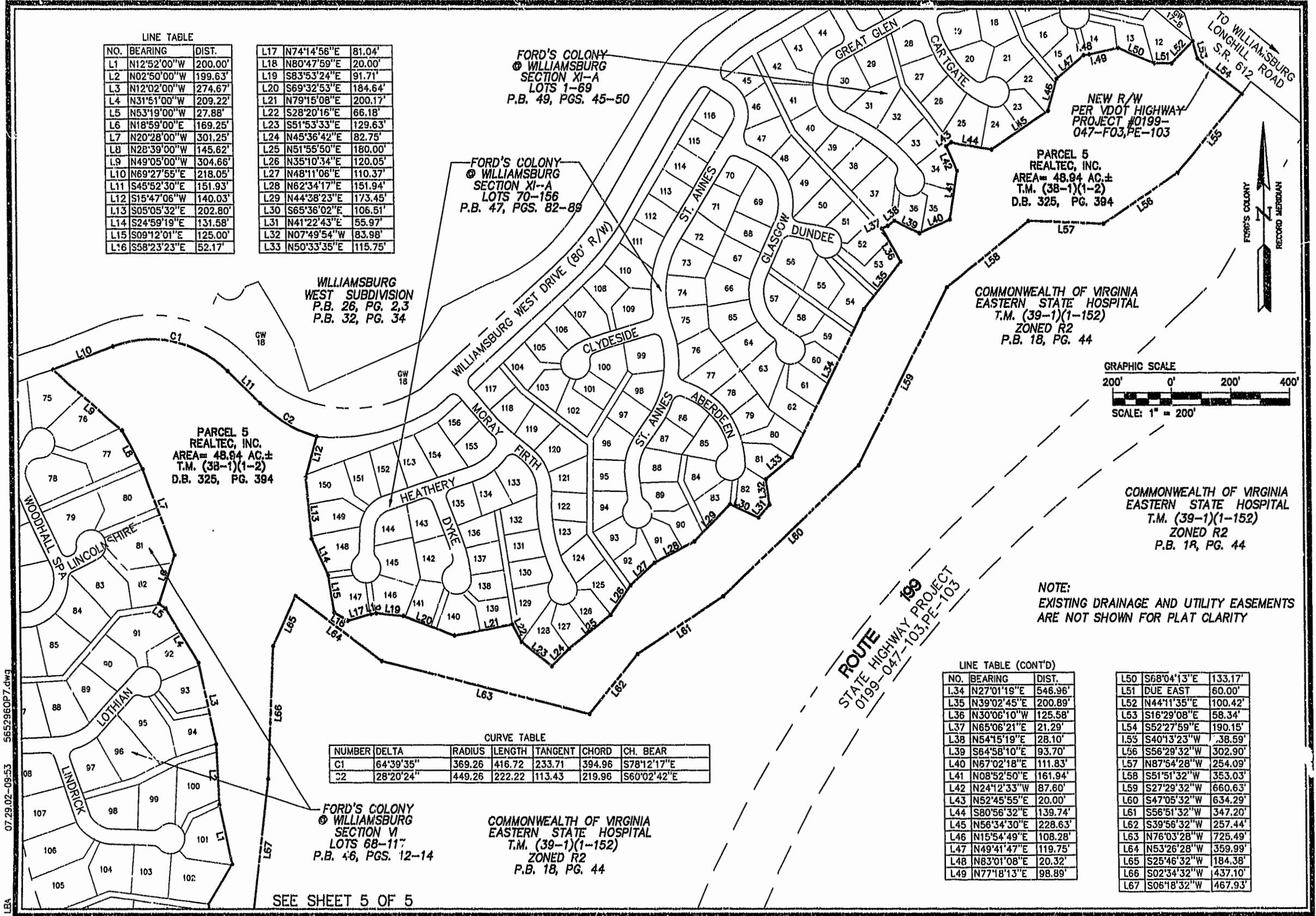
**PLAT SHOWING A PROPOSED
CONSERVATION AREA ON TWO PARCELS
OF LAND BEING A PART OF
FORD'S COLONY AT WILLIAMSBURG**

POWHATAN DISTRICT JAMES CITY COUNTY VIRGINIA



City of Williamsburg & County of James City			
Circuit Court: This PLAT was recorded on			
at 1:22 AM on 08/08/02			
DOCUMENT # 020028346			
BETSY B. WOOLRIDGE, CLERK			
[Signature]			
No.	DATE	REVISION / COMMENT / NOTE	BY

Designed AES	Drawn JFS
Scale 1" = 200'	Date 7/30/02
Project No. 5652-96	
Drawing No. 3 OF 5	



LINE TABLE

NO.	BEARING	DIST.
L1	N12°52'00"W	200.00'
L2	N02°50'00"W	199.63'
L3	N12°02'00"W	274.67'
L4	N31°51'00"W	209.22'
L5	N53°19'00"W	27.88'
L6	N18°59'00"E	169.25'
L7	N20°28'00"W	301.25'
L8	N28°39'00"W	145.62'
L9	N49°05'00"W	304.66'
L10	N69°27'55"E	218.05'
L11	S45°52'30"E	151.93'
L12	S15°47'06"W	140.03'
L13	S05°05'32"E	202.80'
L14	S24°59'19"E	131.58'
L15	S09°12'01"E	125.00'
L16	S58°23'23"E	52.17'

L17	N74°14'56"E	81.04'
L18	N80°47'59"E	20.00'
L19	S83°53'24"E	91.71'
L20	S69°32'53"E	184.64'
L21	N79°15'08"E	200.17'
L22	S28°20'16"E	66.18'
L23	S51°53'33"E	129.63'
L24	N45°36'42"E	82.75'
L25	N51°55'50"E	180.00'
L26	N35°10'34"E	120.05'
L27	N48°11'06"E	110.37'
L28	N62°34'17"E	151.94'
L29	N44°38'23"E	173.45'
L30	S65°36'02"E	106.51'
L31	N41°22'43"E	55.97'
L32	N07°49'54"W	83.98'
L33	N50°33'35"E	115.75'

WILLIAMSBURG WEST SUBDIVISION
P.B. 26, PG. 2,3
P.B. 32, PG. 34

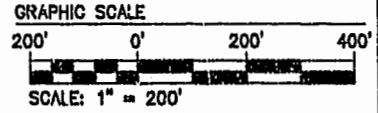
FORD'S COLONY @ WILLIAMSBURG SECTION XI-A LOTS 70-156
P.B. 47, PGS. 82-89

FORD'S COLONY @ WILLIAMSBURG SECTION XI-A LOTS 1-69
P.B. 49, PGS. 45-50

NEW R/W PER VDOT HIGHWAY PROJECT #0199-047-F03, PE-103

PARCEL 5 REALTEC, INC. AREA= 48.94 AC.± T.M. (38-1)(1-2) D.B. 325, PG. 394

COMMONWEALTH OF VIRGINIA EASTERN STATE HOSPITAL T.M. (39-1)(1-152) ZONED R2 P.B. 18, PG. 44



COMMONWEALTH OF VIRGINIA EASTERN STATE HOSPITAL T.M. (39-1)(1-152) ZONED R2 P.B. 18, PG. 44

NOTE: EXISTING DRAINAGE AND UTILITY EASEMENTS ARE NOT SHOWN FOR PLAT CLARITY

CURVE TABLE

NUMBER	DELTA	RADIUS	LENGTH	TANGENT	CHORD	CH. BEAR
C1	64°39'35"	369.26	416.72	233.71	394.96	S78°12'17"E
C2	28°20'24"	449.26	222.22	113.43	219.96	S60°02'42"E

FORD'S COLONY @ WILLIAMSBURG SECTION VI LOTS 68-117
P.B. 46, PGS. 12-14

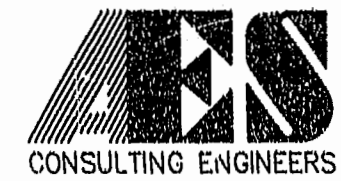
COMMONWEALTH OF VIRGINIA EASTERN STATE HOSPITAL T.M. (39-1)(1-152) ZONED R2 P.B. 18, PG. 44

SEE SHEET 5 OF 5

LINE TABLE (CONT'D)

L34	N27°01'19"E	546.96'
L35	N39°02'45"E	200.89'
L36	N30°06'10"W	125.58'
L37	N65°06'21"E	21.29'
L38	N54°15'19"E	28.10'
L39	S64°58'10"E	93.70'
L40	N67°02'18"E	111.83'
L41	N08°52'50"E	161.94'
L42	N24°12'33"W	87.60'
L43	N52°45'55"E	20.00'
L44	S80°56'32"E	139.74'
L45	N56°34'30"E	228.63'
L46	N15°54'49"E	108.28'
L47	N49°41'47"E	119.75'
L48	N83°01'08"E	20.32'
L49	N77°18'13"E	98.89'

L50	S68°04'13"E	133.17'
L51	DUE EAST	60.00'
L52	N44°11'35"E	100.42'
L53	S16°29'08"E	58.34'
L54	S52°27'59"E	190.15'
L55	S40°13'23"W	38.59'
L56	S56°29'32"W	302.90'
L57	N87°54'28"W	254.09'
L58	S51°51'32"W	353.03'
L59	S27°29'32"W	660.63'
L60	S47°05'32"W	634.29'
L61	S56°51'32"W	347.20'
L62	S39°56'32"W	257.44'
L63	N76°03'28"W	725.49'
L64	N53°26'28"W	359.99'
L65	S25°46'32"W	184.38'
L66	S02°34'32"W	437.10'
L67	S06°18'32"W	467.93'



5248 Olde Towne Road, Suite 1
Williamsburg, Virginia 23188
(757) 253-0040
Fax (757) 220-8994

PLAT SHOWING A PROPOSED CONSERVATION AREA ON TWO PARCELS OF LAND BEING A PART OF FORD'S COLONY AT WILLIAMSBURG
POWhatan DISTRICT JAMES CITY COUNTY VIRGINIA



City of Williamsburg & County of James City Circuit Court: This PLAT was recorded on	
at	
DOCUMENT #	
BETSY B. WOOLRIDGE, CLERK	
By	
No.	DATE
REVISION / COMMENT / NOTE	BY

Designed	Drawn
AES	JFS
Scale	Date
1"=200'	7/30/02
Project No.	
5652-96	
Drawing No.	
4 OF 5	