

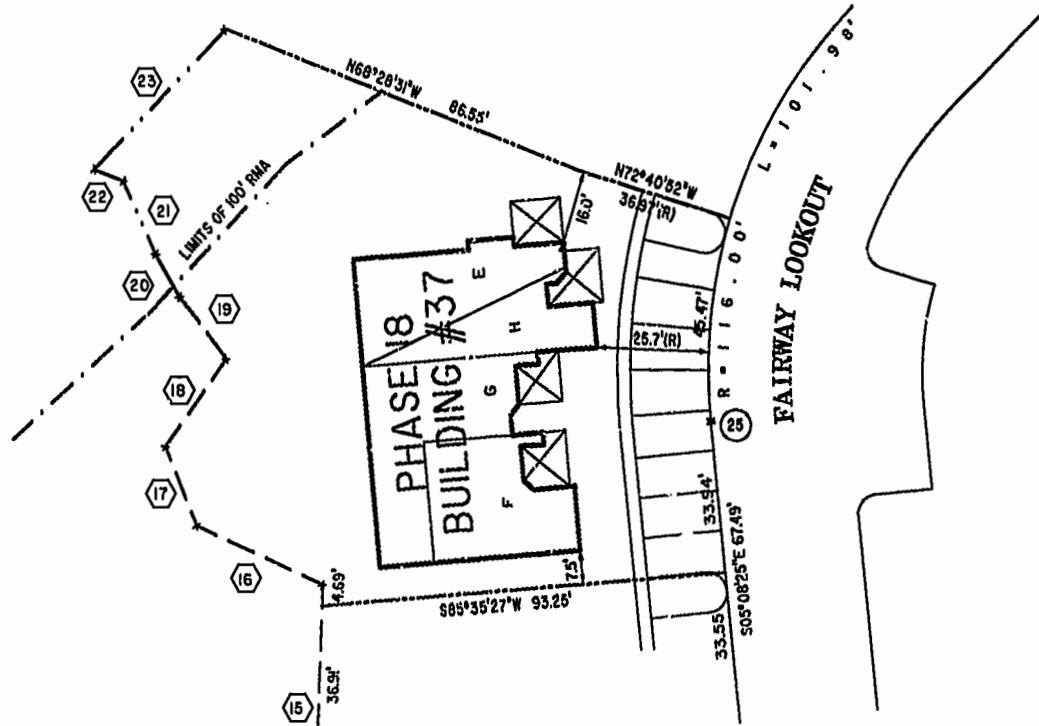
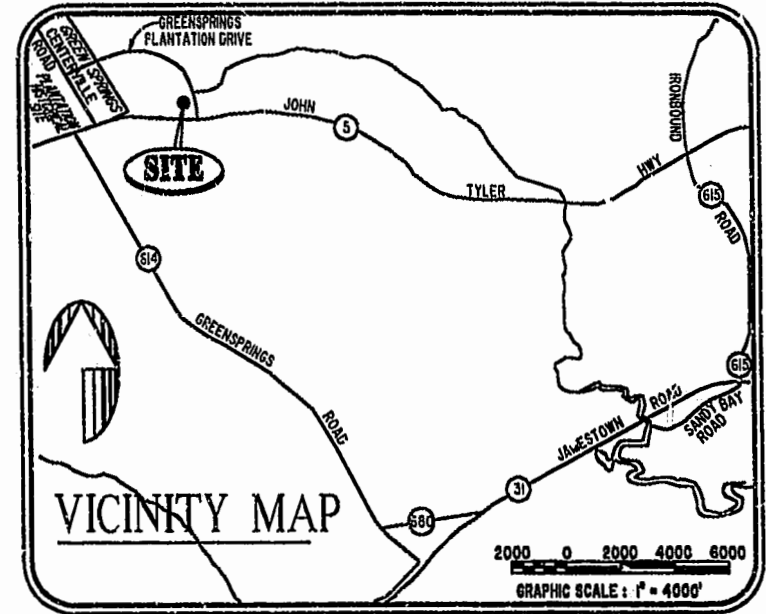
#020028120 ↓

88 PAGE 59

BUILDING NUMBER	UNIT NUMBER	UNIT TYPE	STREET ADDRESS
37	37-476	F	476 FAIRWAY LOOKOUT
37	37-478	G	478 FAIRWAY LOOKOUT
37	37-480	H	480 FAIRWAY LOOKOUT
37	37-482	E	482 FAIRWAY LOOKOUT

NOTES:

1. THE TOTAL AREA OF SITE IS 1,222,568 SQ.FT. (28.07 AC.) OF WHICH 113,718 SQ.FT. (2.611 AC.) IS ADDITIONAL LAND.
2. THE AREA OF THE SUBMITTED LAND IS 1,108,850 SQ.FT. (25.456 AC.)
3. THE COMMON AREA IS TO BE THE RESPONSIBILITY OF THE CONDOMINIUM ASSOCIATION AND HAS A TOTAL AREA OF 16.43 AC.



PHASE 18

AREA = 12,919 SQ. FT. = 0.297 AC.

I CHRISTOPHER D. CAPOZZI, A CERTIFIED LAND SURVEYOR, DO HEREBY CERTIFY THAT THIS PLAT IS ACCURATE, AND THAT IT COMPLIES WITH THE PROVISIONS OF SECTION 55 - 79.58A OF THE CODE OF VIRGINIA. I FURTHER HEREBY CERTIFY THAT ALL UNITS OR PORTIONS THEREOF DEPICTED HEREON HAVE BEEN SUBSTANTIALLY COMPLETED.

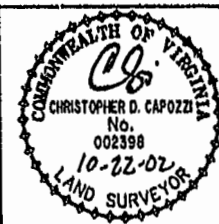
THE UNDERSIGNED CERTIFIED LAND SURVEYOR CERTIFIES THAT HE HAS READ SECTION 55 - 79.58B OF THE CODE OF VIRGINIA, AND FINDS THIS PLAT TO BE ACCURATE AND IN COMPLIANCE WITH THE CODE. I FURTHER CERTIFY THAT ALL UNITS OR PORTIONS THEREOF DEPICTED HEREON HAVE BEEN SUBSTANTIALLY COMPLETED.

10-22-02

DATE

CHRISTOPHER D. CAPOZZI, VA L.S. No. 002398

City of Williamsburg & County of James City
Circuit Court: This PLAT was recorded on
10/25/02
at 10:32 AM PM, PB 88, PG 57-64
DOCUMENT # C20028120
BETSY B. WOOLRIDGE, CLERK
C. J. Sheen, Fee, Dep. Clerk



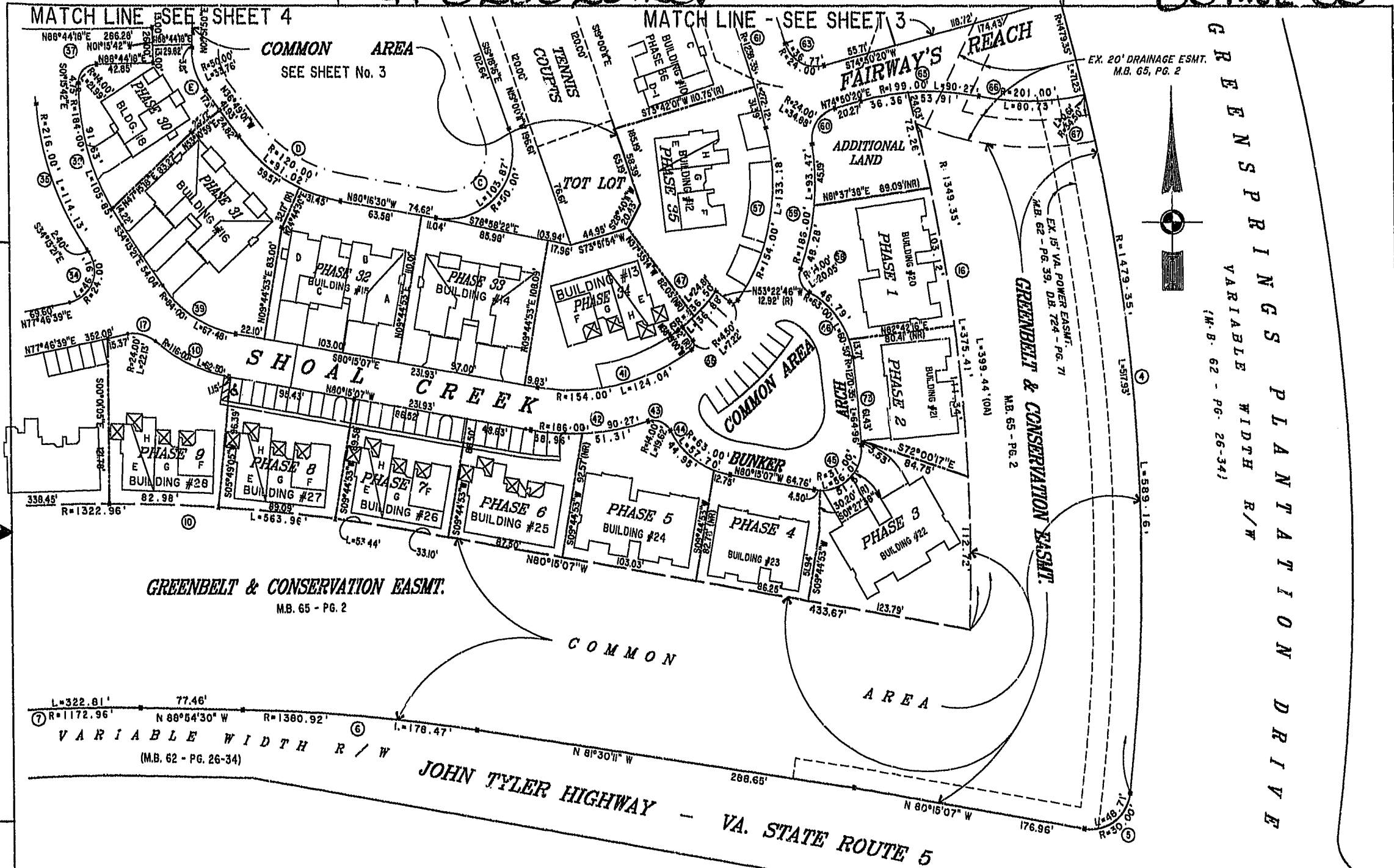
Hassell & Folkes, P.C.
Engineers Surveyors Planners
325 Volvo Parkway
Chesapeake, VA 23320
(757) 547-9531

DRAWN BY:	HJS	DATE:	10/15/02
COMP BY:	HF	DATE:	
CHECKED BY:	HBA	DATE:	10/15/02

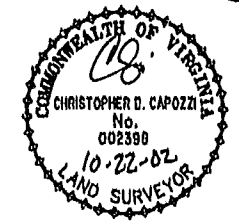
EXHIBIT "A" PHASE 18			
FAIRWAYS VILLAS			
AT GREENSPRINGS, A CONDOMINIUM			
FOR GREENSPRINGS DEVELOPMENT, L.C.			
BERKELEY DISTRICT		JAMES CITY COUNTY, VIRGINIA	
SIZE	CONTRACT	DISK/BOX	FILENAME
C	95-079	6A/16	FAIRWAY18.DWG
		REF: 18/13	FWAYPLAT.DWG
SCALE: 1" = 20'	DATE: 10/22/02	SHEET 1 of 6	

#020028120

88 PAGE 60



**EXHIBIT "A" PHASE 18
FAIRWAYS VILLAS
AT
GREENSPRINGS, A CONDOMINIUM
FOR
GREENSPRINGS DEVELOPMENT, L.C.**



City of Williamsburg & County of James City
Circuit Court: This PLAT was recorded on
7700. 25, 2002
at 10:32 AM, PG 88, PG 89-91
DOCUMENT # C-200-28120
BETSY B. WOOLRIDGE, CLERK
C. New Field, Dup. Clerk

Hassell & Polkes, P.C. Engineers Surveyors Planners Chesapeake, VA 23320 (757) 547-9831	SIZE: C CONTRACT NO: 95-079	DIST/BOX: 6A/10 REF: 18/13	SCALE: 1"=80'	DATE: 10/22/02	FILENAME: FAIRWAY18.DWG E-WAY18.LAT.DWG	REV.
--	--------------------------------	-------------------------------	---------------	----------------	--	------

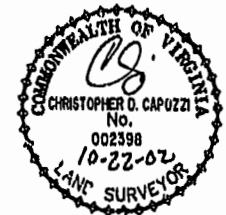
BERKELEY DISTRICT
JAMES CITY COUNTY, VIRGINIA
SHEET 2 of 6

#020028120

88 PAGE 61

City of Williamsburg & County of James City
 Circuit Court: This PLAT was recorded on
 Nov. 25, 2002
 at 10:32 AM PM, PG 88 PG 89-104
 DOCUMENT # 020028120
 BETSY B. WOOLRIDGE, CLERK
 C. New Fall, Dep. Clerk

46-1-01-0-0001
 "GREENSPRINGS PLANTATION"
 (DB 322, PG 254)



EXIST. 20' JAMES CITY COUNTY SERVICE
 AUTHORITY SAN. SEWER EASEMENT AS
 SHOWN IN AS-BUILT LOCATION. D.B. 141 - PG. 388

EXIST. 20' DRAINAGE EASEMENT
 M.B. 65 - PG. 2

MATCH LINE - SEE SHEET 5
 N 76°02'42" E

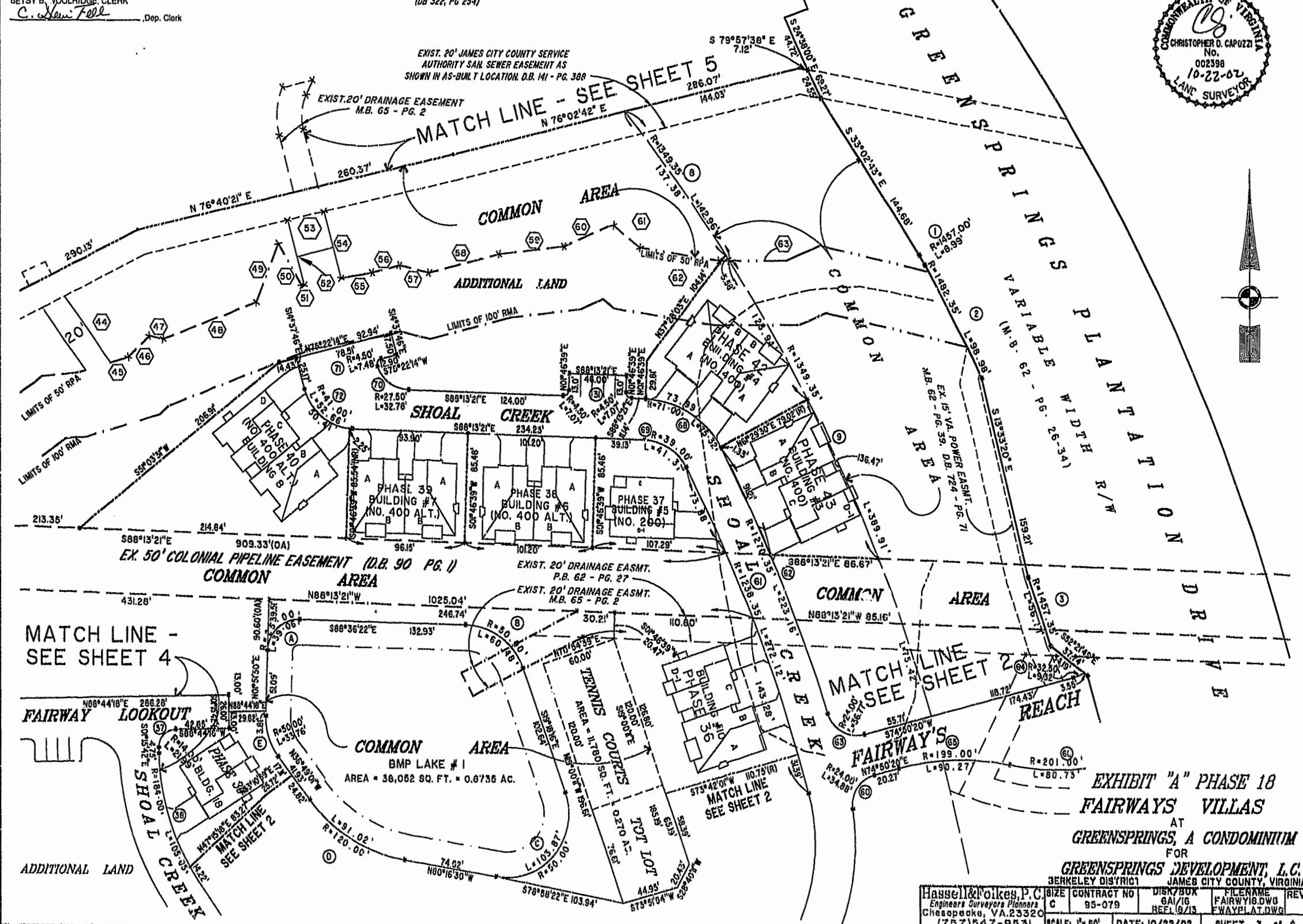


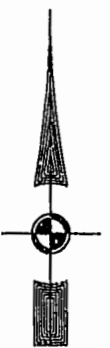
EXHIBIT "A" PHASE 18
 FAIRWAYS VILLAS
 AT
 GREENSPRINGS, A CONDOMINIUM
 FOR
 GREENSPRINGS DEVELOPMENT, L.C.
 3ENKLEY DISTRICT 1 JAMES CITY COUNTY, VIRGINIA

Hassell & Folkes, P.C. Engineers Surveyors Planners Chesapeake, VA 23320 (757) 547-9531	SIZE C	CONTRACT NO 95-079	DISK/BOX 8A/16 REF 1/9/13	FILENAME FAIRWAYS.DWG FWAYPLAT.DWG	REV.
SCALE: 1" = 80'	DATE: 10/22/02	SHEET 3 of 6			

#020028120

88 PAGE 62

EXIST. 80' JAMES CITY COUNTY SERVICE
AUTHORITY SAN. SEWER EASEMENT AS
SHOWN IN AS-BUILT LOCATION. D.B. 141 - PG. 388

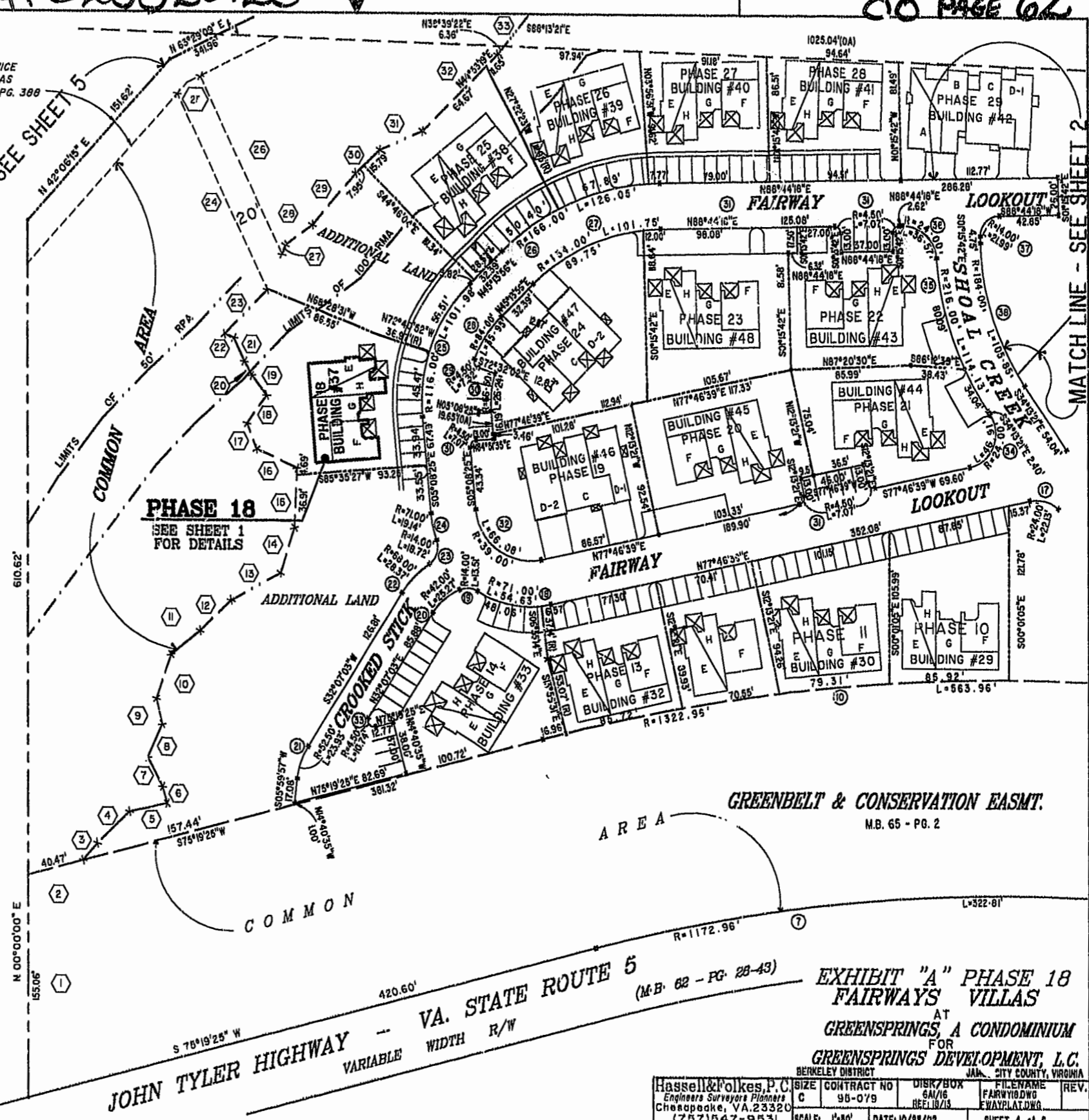


MATCH LINE - SEE SHEET 5

MATCH LINE - SEE SHEET 2

46-1-01-0-0001
"GREENSPRINGS PLANTATION"
(DB 322, PG 254)

City of Williamsburg & County of James City
Circuit Court: This PLAT was recorded on
NOV. 25, 2002
at 10:32 AM, P.M., PG. 59-61
DOCUMENT # 020028120
BETSY B. WOOLRIDGE, CLERK
C. Newell, Dep. Clerk



JOHN TYLER HIGHWAY - VA. STATE ROUTE 5
VARIABLE WIDTH R/W

GREENBELT & CONSERVATION EASMT.
M.B. 65 - PG. 2

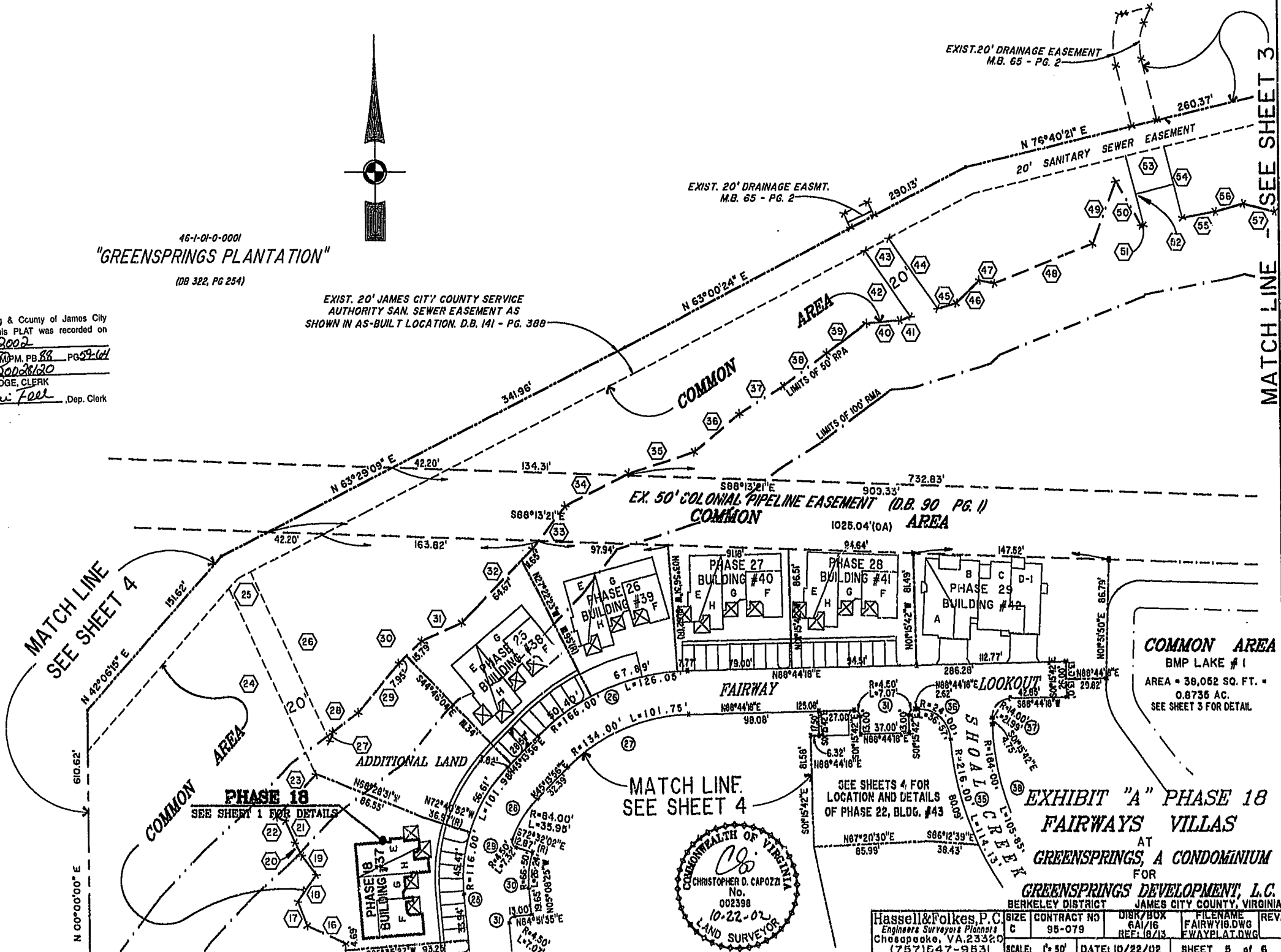
EXHIBIT "A" PHASE 18
FAIRWAYS VILLAS
AT
GREENSPRINGS, A CONDOMINIUM
FOR
GREENSPRINGS DEVELOPMENT, L.C.
BERKELEY DISTRICT JAMES CITY COUNTY, VIRGINIA

Hassell & Polkes, P.C. Engineers Surveyors Planners Charlottesville, VA 22902 (757) 547-9531	SIZE CONTRACT NO C 95-079	DISK/BOX 6A/16 REEL 18/13	FILE NAME FAIRWAYS.DWG WAYPLAT.DWG	REV.
SCALE: 1"=80'	DATE: 10/22/02	SHEET 4 of 6		

46-1-01-0-0001
"GREENSPRINGS PLANTATION"
(DB 322, PG 254)

EXIST. 20' JAMES CITY COUNTY SERVICE
AUTHORITY SAN. SEWER EASEMENT AS
SHOWN IN AS-BUILT LOCATION, D.B. 141 - PG. 388

City of Williamsburg & County of James City
Circuit Court: This PLAT was recorded on
Nov. 25, 2002
at 10:32 AM P.M. PB. 88 PG. 59-64
DOCUMENT # 020028120
BETSY B. WOOLRIDGE, CLERK
C. Newell Dep. Clerk



MATCH LINE
SEE SHEET 4

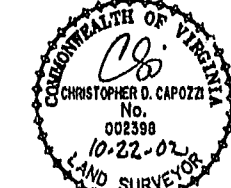
MATCH LINE
SEE SHEET 3

MATCH LINE
SEE SHEET 4

COMMON AREA
BMP LAKE #1
AREA = 38,062 SQ. FT. =
0.8735 AC.
SEE SHEET 3 FOR DETAIL

SEE SHEETS 4 FOR
LOCATION AND DETAILS
OF PHASE 22, BLDG. #43

EXHIBIT "A" PHASE 18
FAIRWAYS VILLAS
AT
GREENSPRINGS, A CONDOMINIUM
FOR
GREENSPRINGS DEVELOPMENT, L.C.
BERKELEY DISTRICT JAMES CITY COUNTY, VIRGINIA



Hassell & Polkes, P.C. Engineers Surveyors Planners Chesapeake, VA 23320 (757) 547-9531	SCALE: 1" = 50'	DATE: 10/22/02	SHEET 8 of 6
--	-----------------	----------------	--------------

020028120

88 PAGE 64

N°	BEARING	DISTANCE	N°	BEARING	DISTANCE	N°	BEARING	DISTANCE	N°	BEARING	DISTANCE
1	NORTH	155.06'	21	N24°19'39"W	18.00'	41	N73°24'07"E	8.57'	61	S50°49'30"E	28.39'
2	N75°19'25"E	40.47'	22	N69°19'39"W	7.07'	42	N35°32'25"W	59.16'	62	S81°14'26"E	64.31'
3	N40°42'39"E	15.76'	23	N44°31'02"E	43.59'	43	N63°00'24"E	20.22'	63	N89°22'10"E	8.13'
4	N46°08'27"E	32.02'	24	N25°21'31"W	150.65'	44	S35°32'28"E	63.02'			
5	N78°05'22"E	27.89'	25	N53°05'23"E	20.41'	45	N73°24'07"E	14.72'			
6	N16°44'45"W	12.04'	26	S25°21'31"E	136.97'	46	N46°21'12"E	24.05'			
7	N27°24'57"W	23.32'	27	N19°51'26"E	6.90'	47	S77°39'56"E	11.29'			
8	N24°46'40"E	25.18'	28	N63°59'32"E	24.16'	48	N68°43'48"E	80.88'			
9	N13°22'46"W	18.38'	29	N40°41'58"E	47.56'	49	N21°06'45"E	48.92'			
10	N19°16'53"E	32.76'	30	N46°49'41"E	23.74'	50	S30°18'14"E	37.69'			
11	N51°25'01"E	26.57'	31	N66°20'36"E	33.45'	51	N79°32'01"E	1.93'			
12	N46°33'07"E	31.05'	32	N44°53'18"E	76.32'	52	N14°37'46"W	52.29'			
13	N61°21'58"E	40.31'	33	N38°39'22"E	40.18'	53	N76°40'21"E	30.01'			
14	N17°35'03"E	32.98'	34	N63°44'13"E	53.14'	54	S14°37'46"E	53.80'			
15	N02°42'14"E	41.60'	35	N72°23'40"E	52.44'	55	N79°32'01"E	25.17'			
16	N65°30'48"W	31.89'	36	N30°42'38"E	43.97'	56	N74°56'18"E	22.42'			
17	N21°18'53"W	19.03'	37	N58°37'17"E	38.60'	57	S78°45'41"E	24.45'			
18	N35°55'39"E	24.19'	38	N54°09'52"E	41.40'	58	N75°14'55"E	58.28'			
19	N37°34'05"W	17.46'	39	N54°09'52"E	37.13'	59	N83°10'12"E	52.44'			
20	N29°31'19"W	11.05'	40	N84°42'43"E	25.55'	60	N66°02'13"E	42.50'			

CURVE DATA

N°	DELTA	RADIUS	LENGTH	TANGENT	CHORD	N°	DELTA	RADIUS	LENGTH	TANGENT	N°	DELTA	RADIUS	LENGTH	TANGENT
1	00°21'13"	1457.00'	8.99'	4.50'	S29°17'32"E 8.99'	36	87°18'45"	24.00'	36.57'	22.90'	71	95°17'54"	4.50'	7.48'	4.94'
2	03°49'33"	1482.35'	98.98'	49.51'	S27°33'21"E 98.96'	37	90°00'00"	14.00'	21.99'	14.00'	72	73°35'34"	41.00'	52.66'	30.67'
3	02°12'22"	1457.35'	56.11'	28.06'	S18°24'28"E 56.11'	38	32°57'39"	184.00'	105.85'	54.43'	73	02°55'47"	1270.35'	64.95'	32.49'
4	22°49'06"	1479.35'	589.16'	298.53'	S04°41'57"E 585.27'	39	46°01'46"	84.00'	67.48'	35.68'					
5	93°02'17"	30.00'	48.71'	31.63'	S83°13'44"W 43.54'	40	30°52'07"	116.00'	62.50'	32.03'					
6	07°24'18"	1380.92'	178.47'	89.30'	N85°12'21"W 178.35'	41	46°08'54"	154.00'	124.04'	65.60'					
7	15°46'06"	1172.96'	322.81'	162.43'	S83°12'28"W 321.79'	42	27°48'28"	186.00'	90.27'	46.04'					
8	06°04'13"	1349.35'	142.96'	71.55'		43	80°16'81"	14.00'	19.62'	11.81'					
9	16°33'24"	1349.35'	389.91'	196.32'		44	52°28'22"	63.00'	67.70'	31.05'					
10	24°26'28"	1322.96'	563.96'	286.33'		45	103°31'29"	31.00'	56.01'	39.34'					
						46	55°01'24"	63.00'	60.50'	32.81'					
						47	10°24'49"	136.50'	24.81'	12.44'					
16	16°57'40"	1349.35'	399.44'	201.19'											
17	52°50'21"	24.00'	22.13'	11.92'		55	91°55'00"	4.50'	7.22'	4.65'					
18	44°05'16"	71.00'	54.63'	28.75'		56	15°28'57"	136.50'	36.88'	18.56'					
19	55°16'28"	14.00'	13.51'	7.33'		57	49°33'05"	154.00'	133.18'	71.08'					
20	34°28'27"	42.00'	25.27'	13.03'		58	82°03'57"	14.00'	20.05'	12.18'					
21	26°07'06"	52.50'	23.93'	12.18'		59	28°47'34"	186.00'	93.47'	47.74'					
22	23°54'28"	68.00'	28.37'	14.40'		60	33°16'14"	24.00'	34.88'	21.33'					
23	76°36'32"	14.00'	18.72'	11.06'		61	12°35'25"	1238.35'	272.12'	136.61'					
24	15°26'37"	71.00'	19.14'	9.63'		62	10°03'54"	1270.35'	223.16'	111.87'					
25	50°22'21"	116.00'	101.98'	54.55'		63	87°47'18"	24.00'	36.77'	23.09'					
26	43°30'21"	166.00'	126.05'	66.24'		64	16°28'32"	32.80'	9.32'	4.69'					
27	43°30'21"	134.00'	101.78'	53.42'		65	25°59'25"	199.00'	90.27'	45.93'					
28	24°31'17"	84.00'	35.95'	18.25'		66	23°00'40"	201.00'	80.73'	40.81'					
29	93°14'42"	4.50'	7.32'	4.76'		67	01°01'24"	34.50'	0.61'	0.31'					
30	22°36'22"	66.50'	25.24'	13.29'		68	60°47'05"	71.00'	75.32'	41.64'					
31	90°00'00"	4.50'	7.07'	4.50'		69	60°47'05"	39.00'	41.37'	22.87'					
32	97°04'56"	39.00'	61.00'	44.15'		70	68°17'41"	27.50'	32.78'	18.65'					
33	136°47'38"	4.50'	10.74'	11.05'											
34	112°00'00"	24.00'	46.91'	35.58'											
35	30°18'23"	216.00'	114.13'	88.43'											

LAKE CURVE DATA

N°	DELTA	RADIUS	LENGTH	TANGENT
A	89°31'48"	25.00'	39.06'	24.80'
B	69°18'06"	50.00'	60.48'	34.56'
C	119°01'46"	50.00'	103.87'	84.93'
D	43°27'29"	120.00'	91.02'	47.82'
E	38°40'50"	50.00'	33.76'	17.85'

City of Williamsburg & County of James City
 Circuit Court: This PLAT was recorded on
 NOV. 25, 2002
 at 10:32 AM PM, PG 88, PG 94
 DOCUMENT # 020028120
 BETSY B. WOOLRIDGE, CLERK
 C. Allen Felt, Dep. Clerk

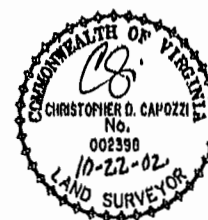


EXHIBIT "A" PHASE 18
 FAIRWAYS VILLAS
 AT
 GREENSPRINGS, A CONDOMINIUM
 FOR
 GREENSPRINGS DEVELOPMENT, L.C.
 BERKELEY DISTRICT JAMES CITY COUNTY, VIRGINIA

Hassell & Folkes, P.C. Engineers Surveyors Planners Chesapeake, VA 23320 (757)547-9531	SIZE: C	CONTRACT NO: 95-079	DISK/BOX: 6A/16	FILE NAME: FAIRWAY18.DWG	REV: 18/13
	SCALE: NONE	DATE: 10/22/02		SHEET 6 of 6	