

88 page 26

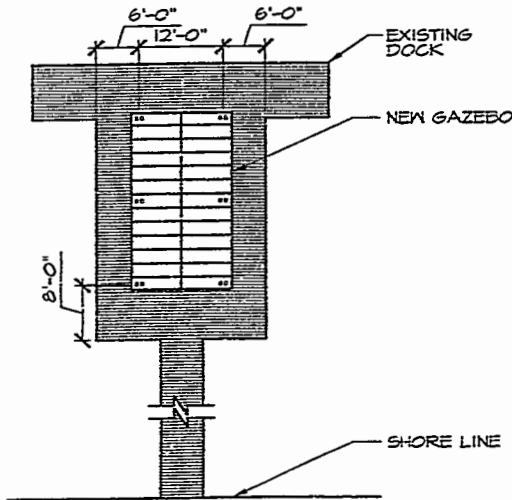
#02.0025833

BUILDING DATA :
 OCCUPANCY : A3
 CONSTRUCTION TYPE : 5B
 AREA : 289 SQUARE FEET

DESIGN LOADS:
 ROOF LIVE LOAD: 20PSF
 FLOOR LOAD: 100 PSF
 WIND LOAD: 80 MPH
 SNOW LOAD: 20PSF
 SEISMIC LOAD: GROUP 1, Av=0.05

GENERAL NOTES

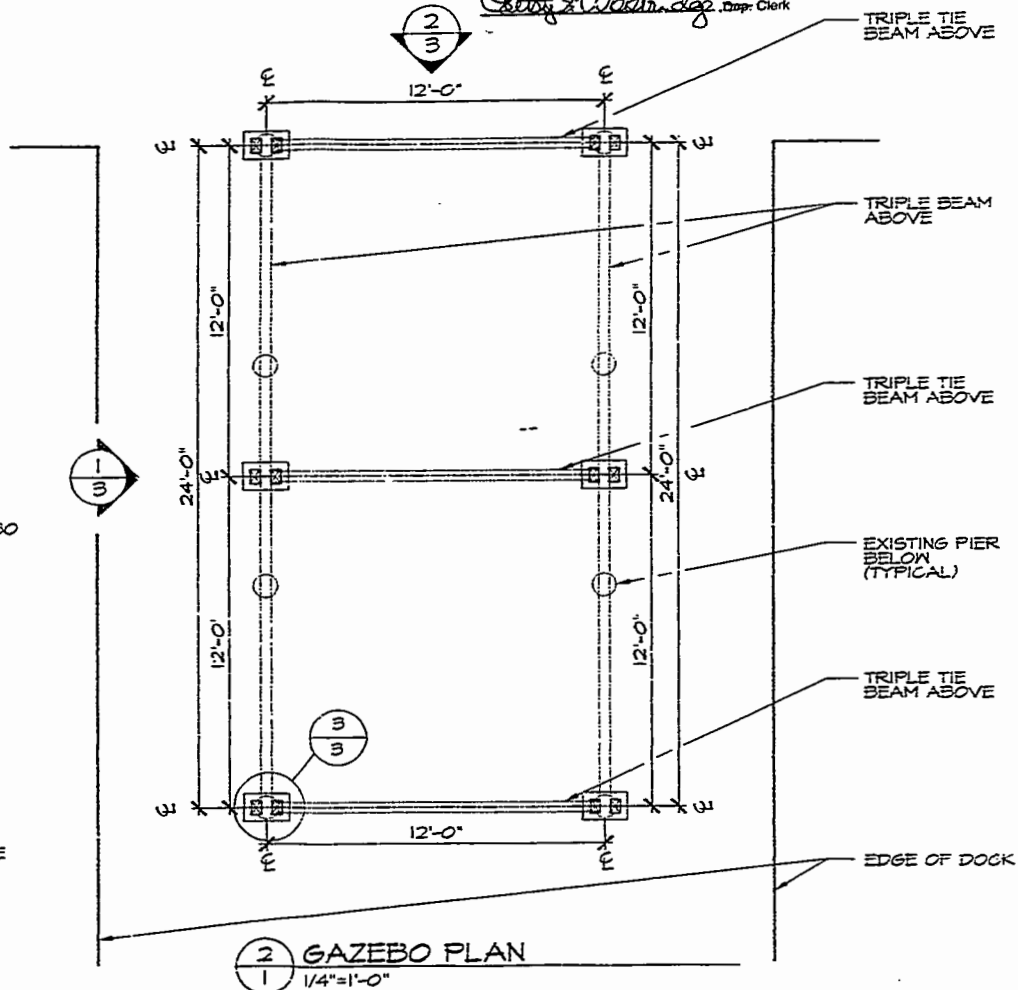
1. ALL CONSTRUCTION SHALL COMPLY WITH THE VIRGINIA UNIFORM STATEWIDE BUILDING CODE, 1997 EDITION.
2. ALL FRAMING AND LUMBER SHALL BE NO. 2 SOUTHERN YELLOW PINE, PRESERVATIVE TREATED 0.4 RETENTION, AS HEREIN SPECIFIED IN ACCORDANCE WITH MANUFACTURER'S RECOMMENDATIONS.
3. BOLTS SHALL CONFORM TO ASTM A307, PROVIDE GALVANIZED PLATE WASHERS UNDER NUT AND HEAD.
4. ALL NAILS, BOLTS, NUTS OR OTHER METAL HARDWARE SHALL BE HOT-DIPPED GALVANIZED.



1 DOCK PLAN
1/16"=1'-0"

EXHIBIT A

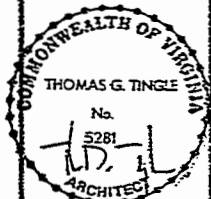
City of Williamsburg & County of James City
 Circuit Court: This PLAT was recorded on
 4 Nov 2002
 at 8:47 AM PB 88 PG 26 of 28
 DOCUMENT # 02.0025833
 BETSY B. WOOLRIDGE, CLERK
 Betsy B. Woolridge, Temp. Clerk



2 GAZEBO PLAN
1/4"=1'-0"

**Guettnsey
Tingle
Architects**
 WILLIAMSBURG, VIRGINIA
 23180 JORDON

Mill Pond Park Gazebo
 Stonehouse
 James City County, Virginia

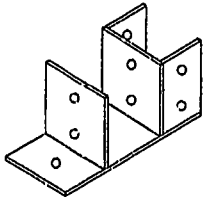


Date 10-18-01
 Drawn PLH
 Checked TST
 Project 201055

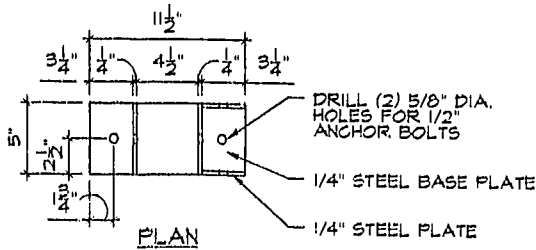
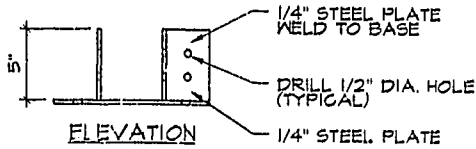
1 of FOUR Sheets

020025833

88 PAGE 27



ISOMETRIC



1 POST CAP
2 1-1/2" x 1'-0"

City of Williamsburg & County of James City
Circuit Court: This PLAT was recorded on

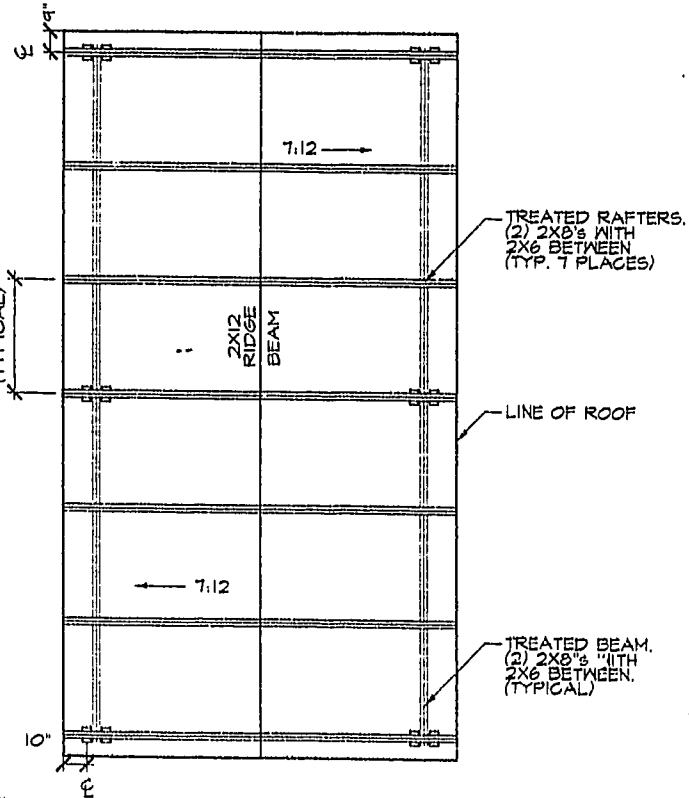
4 Nov. 2002

at 8:49 AM/VAM. PB 88 PG 26 of 25

DOCUMENT # 020025833

BETSY B. WOOLRIDGE, CLERK

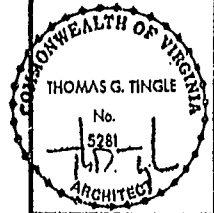
Betsy B. Woolridge Dep. Clerk



2 FRAMING PLAN
2 1/4" = 1'-0"

Guernsey
Tingle
Architects
WILLIAMSBURG, VIRGINIA
57 ZD4023

Mill Pond Park Gazebo
Stonehouse
James City County, Virginia



Date	10-18-01
Drawn	WJH
Checked	TET
Project	2010BB

2
of FOUR Sheets

020025833

88 PAGE 28

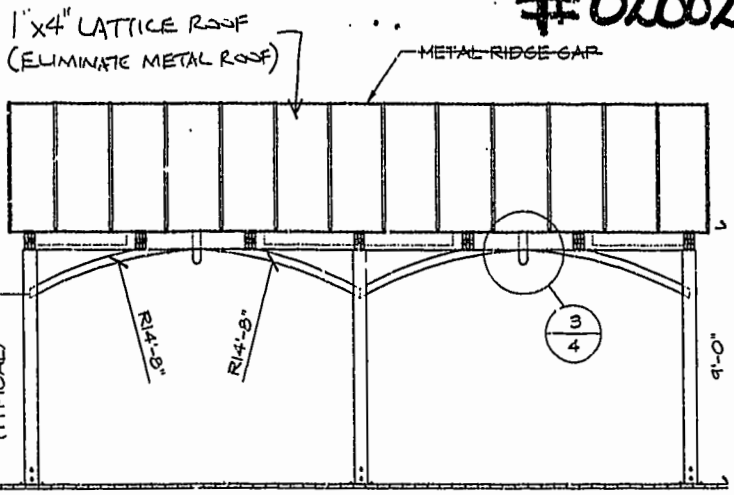
Guernsey
Tingle
Architects
WILLIAMSBURG, VIRGINIA 23186-0020

Mill Pond Park Gazebo
Stonehouse
James City County, Virginia

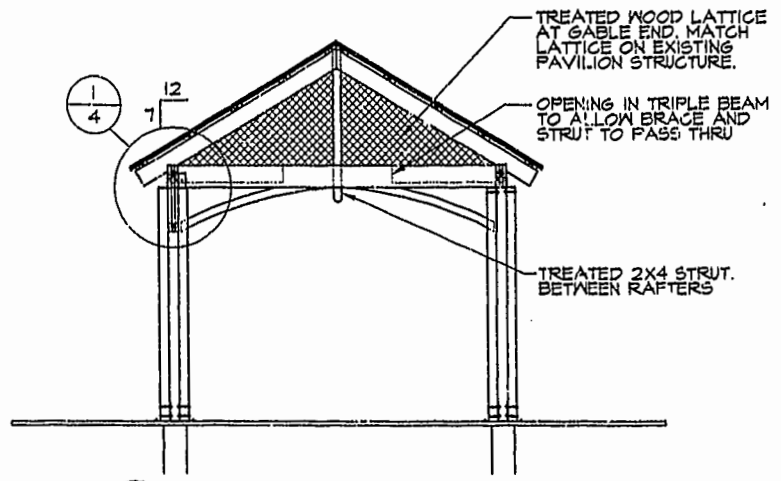
COMMONWEALTH OF VIRGINIA
THOMAS G. TINGLE
No. 5281
ARCHITECT

Date 10-18-01
Drawn WJH
Checked TGT
Project 2010BB

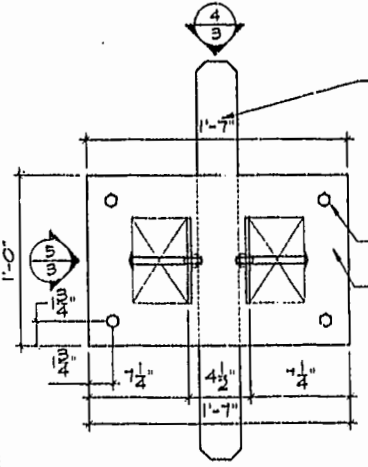
3
of FOUR sheets



1 SIDE ELEVATION
3 1/4" = 1'-0"



2 END ELEVATION
3 1/4" = 1'-0"

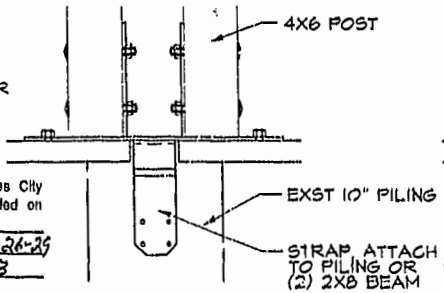


3 POST BASE
3 1-1/2" = 1'-0"

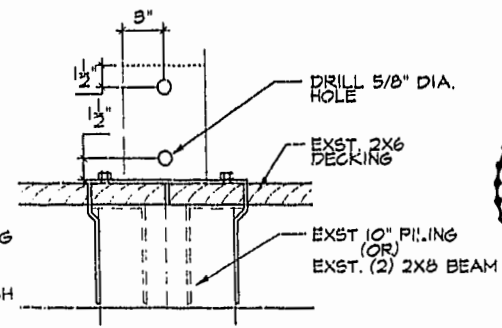
"SIMPSON" MSTC28 STRAP, WELDED TO BASE, FOLD STRAP TO ATTACH TO PILING.
NOTE: FOR CENTER COLUMN APPLICATION, ROTATE STRAP 90°

DRILL (4) 7/8" DIA. HOLE FOR 5/8" DIA. ANCHOR BOLT
FABRICATE FROM 1/4" STEEL PLATE

City of Williamsburg & County of James City Circuit Court: This PLAT was recorded on 4 MAR 2002 at 8:45 AM/PM, PB 88, PG 26-29 DOCUMENT # 020025833 BETSY B. WOOLRIDGE, CLERK
Betsy B. Woolridge, Dep. Clerk



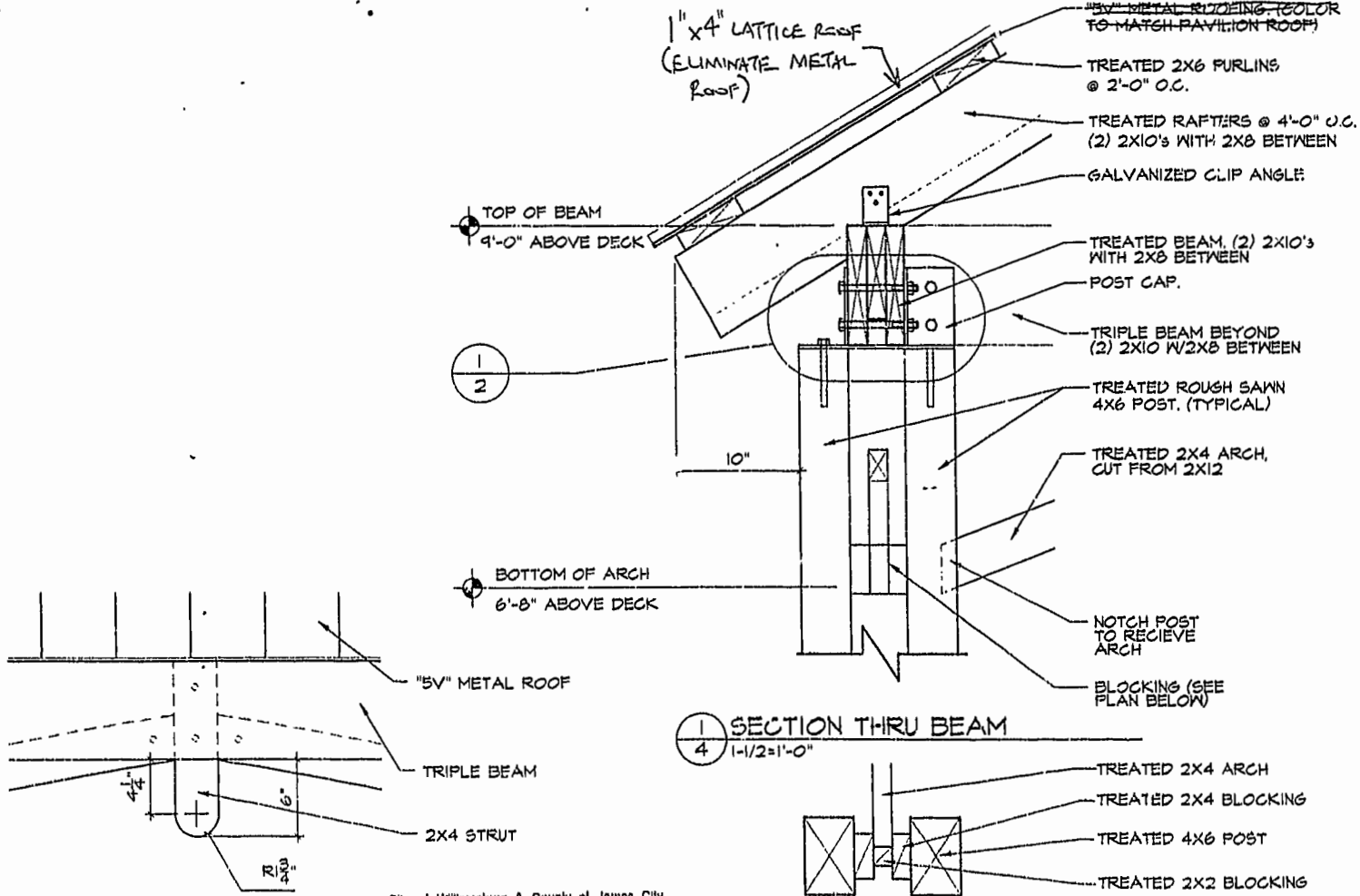
4 BASE ELEVATION
3 1-1/2" = 1'-0"



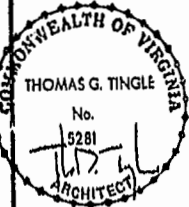
5 BASE ELEVATION
3 1-1/2" = 1'-0"

88 PAGE 29

#020025833



City of Williamsburg & County of James City
 Circuit Court: This PLAT was recorded on
 4 JUL 2002
 at 2:49 AM AM. PB 28 PG 26-29
 DOCUMENT # 020025833
 BETSY B. WOOLHIDGE, CLERK
 Betsy B. Woolhidge Dep. Clerk



Date 10-18-01
 Drawn PLJH
 Checked TGT
 Project 201088

4
 of FOUR Sheets

Guemsey
 Tingle
 Architects
 WILLIAMSBURG, VIRGINIA 23187-2902

Mill Pond Park Gazebo
 Stonerhouse
 James City County, Virginia