

LEGEND

PHASE I & II BOUNDARY

TIE LINE

SETBACK LINE

EASEMENT

PROPERTY LINE

RIGHT-OF-WAY LINE

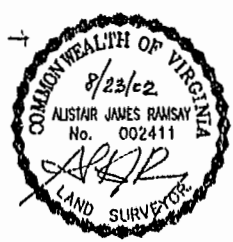
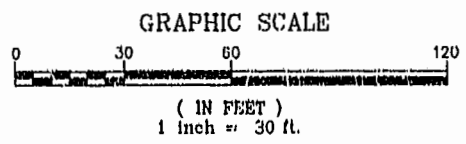
IRON ROD SET

IRON ROD FOUND

CONSERVATION EASEMENT

LINE	RADIUS	ARC	CHORD BEARING	CHORD	DELTA	TANGENT
C1	175.00'	283.07'	N31°18'19"W	253.20'	92°40'40"	183.38'
C2	125.00'	202.19'	S31°18'19"E	180.86'	92°40'41"	130.98'
C3	1477.39'	120.48'	N04°47'36"E	120.44'	4°40'20"	60.27'
C4	1497.39'	100.79'	N05°16'16"E	100.77'	3°51'24"	50.41'
C5	228.53'	117.14'	N53°55'21"W	115.86'	29°22'06"	59.89'
C6	238.17'	55.63'	N75°17'51"W	55.50'	13°22'56"	27.94'
C7	1477.39'	249.65'	N13°54'54"E	249.36'	9°40'55"	125.12'
C8	1447.39'	410.16'	N10°34'44"E	408.79'	16°14'11"	206.46'
C9	154.00'	249.10'	S31°18'19"E	222.82'	92°40'40"	161.37'

City of Williamsburg & County of James City
 Circuit Court: This PLAT was recorded on
9 Oct. 2002
 at 2:31 AM PM, PB. 82 PG 98-101
 DOCUMENT # 020073322
 BETSY B. WOOLRIDGE, CLERK
Betsy B. Woolridge, Dep. Clerk



**SUBDIVISION PLAT
 IRONBOUND VILLAGE
 PHASE I**

JAMES CITY COUNTY, BENKELEY DISTRICT
 COMMONWEALTH OF VIRGINIA
 SCALE: 1" = 30' DATE: 2/28/02
 SHEET 3 OF 3

LANDMARK
DISCINGROUP
 Engineers • Planners • Surveyors
 Landscape Architects • Environmental Consultants

4029 Ironbound Road
 Suite 100
 Williamsburg, VA 23188
 Tel. (757) 253-2975
 Fax (757) 229-0049
 Email: lmdg@landmarkdgb.com

5544 Greenwich Road
 Suite 200
 Virginia Beach, VA 23462
 Tel. (757) 473-2000
 Fax (757) 497-7933
 Email: lmdg@landmarkdgb.com

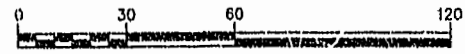
87 PAGE 100

#020023322

SUBDIVISION PLAT IRONBOUND VILLAGE PHASE I

JAMES CITY COUNTY, BERKELEY DISTRICT
COMMONWEALTH OF VIRGINIA
SCALE: 1" = 30' DATE: 2/28/02
SHEET 2 OF 3

GRAPHIC SCALE



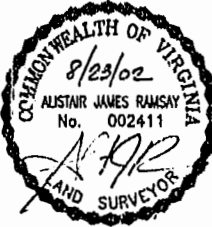
(IN FEET)
1 inch = 30 ft.



Engineers • Planners • Surveyors
Landscape Architects • Environmental Consultants

4029 Ironbound Road
Suite 100
Williamsburg, VA 23188
Tel. (757) 253-2975
Fax (757) 229-0049
Email: lmdg@landmarkdkg.com

5544 Greenwich Road
Suite 200
Virginia Beach, VA 23462
Tel. (757) 473-2000
Fax (757) 497-7933
Email: lmdg@landmarkdkg.com



City of Williamsburg & County of James City
Circuit Court: This PLAT was recorded on
9 Oct 2002
at 2:31 AM/PM, P.B. 19 PG 23-10
DOCUMENT # 020023322
BETSY B. WOOLRIDGE, CLERK
Betsy Woolridge, Dep. Clerk

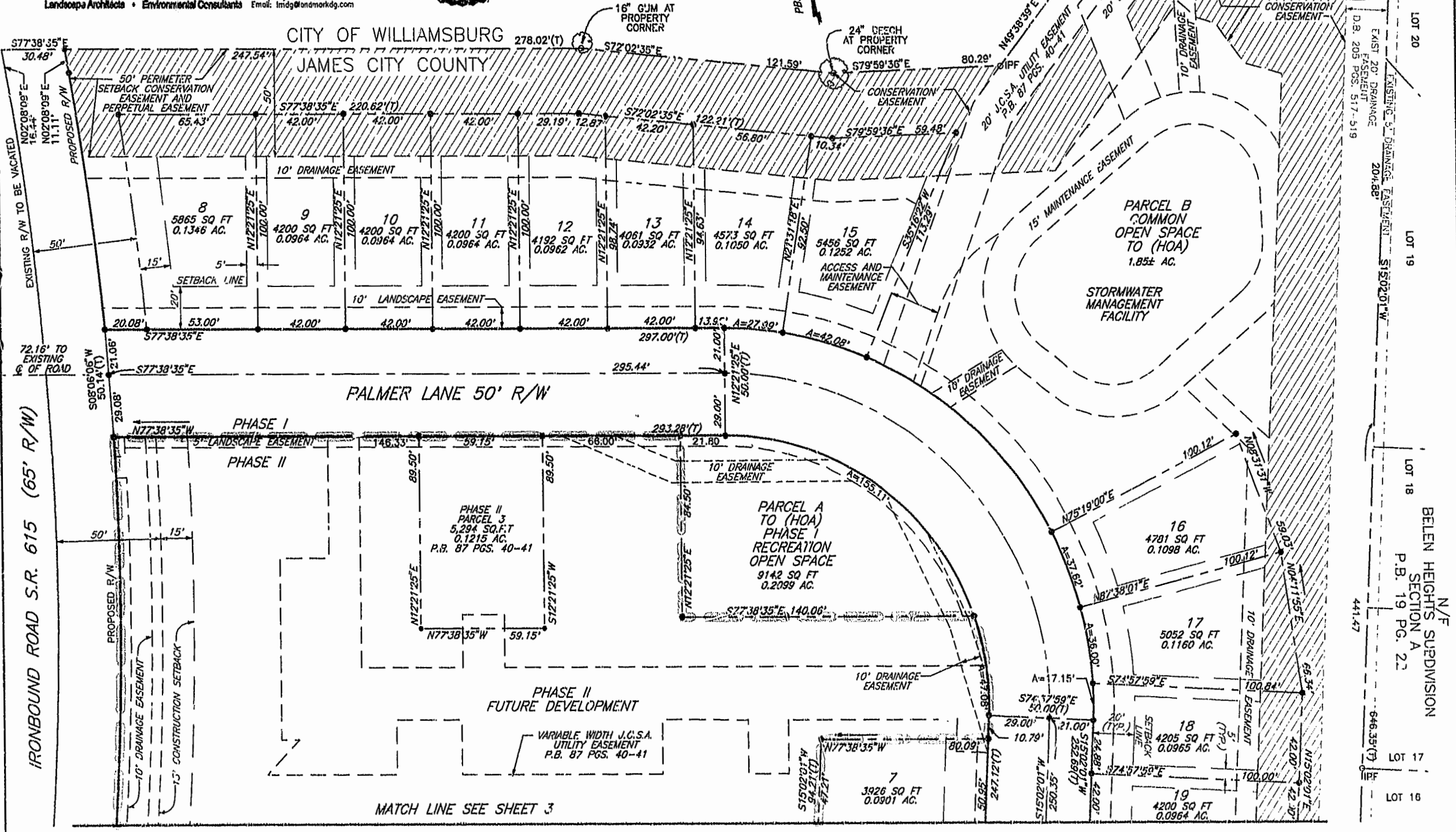
PERMANENT EASEMENT
D.B. 162 PG 225

CL. STREAM
PER P.B. 164
PG. 757

N/F
L.W. WALES SUBDIVISION
SECTION 2
D.B. 88 PG. 18

N/F
W.H. LEWIS DEVELOPMENT
P.B. 19 PG. 23

PERMANENT SEWER
EASEMENT D.B. 163
PGS. 517-519



IRONBOUND ROAD S.R. 615 (65' R/W)

PALMER LANE 50' R/W

MATCH LINE SEE SHEET 3

N/F
BELEN HEIGHTS SUBDIVISION
SECTION A
P.B. 19 PG. 22

LOT 17
LOT 18

