

VICINITY MAP  
SCALE: 1"=2000'

PLAT SHOWING  
**100' CONSERVATION/OPEN SPACE EASEMENT**  
TO BE CONVEYED TO  
**JAMES CITY COUNTY & THE WILLIAMSBURG LAND CONSERVANCY**  
FROM  
**CHUCK HOLLOW, INC.**  
POWhatan DISTRICT, JAMES CITY COUNTY, VIRGINIA  
SCALE 1"=100' JULY 15, 2002

JOHN TYLER HIGHWAY - ROUTE #5 (66' R\W)

1.4 Mi. +/- to C/L  
CHICKOHOMNY RIVER

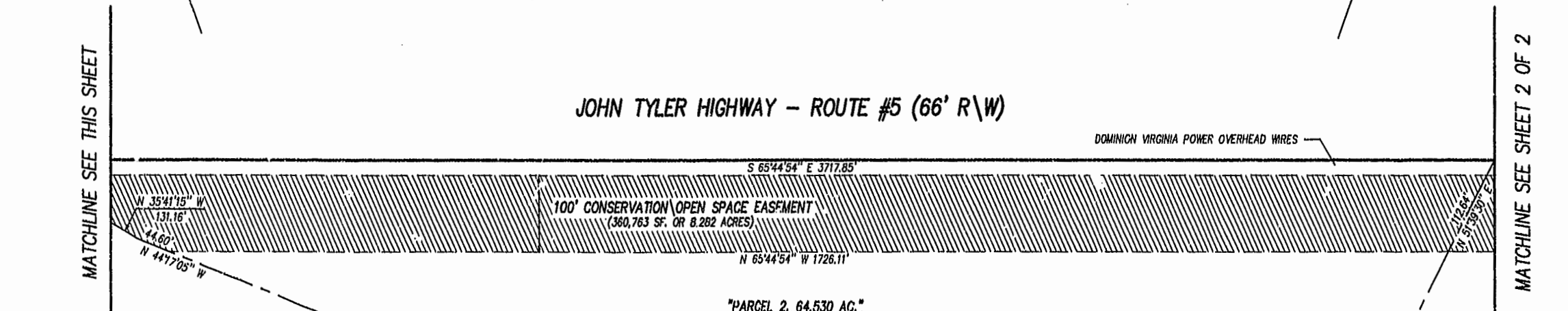


"PARCEL 2, 64.530 AC."  
CHUCK HOLLOW INC.  
(INSTR# 010018146)

N\F  
BAXIER I. BELL, JR.  
(INSTR# 970010066)

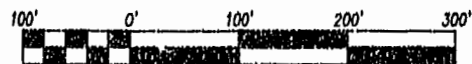
N\F  
WILLIAMSBURG POTTERY FACTORY  
(DB.324,PG.802)

JOHN TYLER HIGHWAY - ROUTE #5 (66' R\W)



"PARCEL 2, 64.530 AC."  
CHUCK HOLLOW INC.  
(INSTR# 010018146)

N\F  
WILLIAMSBURG POTTERY FACTORY  
(DB.324,PG.602)



SCALE 1" = 100'

City of Williamsburg & County of James City  
Circuit Court: This PLAT was recorded on  
25 Sept. 2002  
at 10:34 AM/M. PB. 97. PG. 85486  
DOCUMENT # 020021999  
BETSY B. WOOLRIDGE, CLERK  
*Betsy Woolridge* Clerk



SHEET 1 OF 2

**Rickmond Engineering Inc.**

ENGINEERING SURVEYING LAND PLANNING

1643 MERRIMAC TRAIL WILLIAMSBURG, VA 23185  
PHONE: (757)229-1776 FAX: (757)229-4683

VINT HILL P.O. BOX 861647 WARRENTON, VA 20107  
PHONE: (540)349-7730 FAX: (540)349-7731

www.rickmond.com

CHECKED BY: CBD	DRAWN BY: CBD	SCALE: 1"=100'	DATE: 07/15/02	JOB# 02158
--------------------	------------------	-------------------	-------------------	---------------

MATCHLINE SEE THIS SHEET

MATCHLINE SEE SHEET 2 OF 2