

VICINITY MAP
SCALE: 1"=2000'

PLAT SHOWING
100' CONSERVATION/OPEN SPACE EASEMENT
TO BE CONVEYED TO
JAMES CITY COUNTY & THE WILLIAMSBURG LAND CONSERVANCY
FROM
CHUCK HOLLOW, INC.
POWhatan DISTRICT, JAMES CITY COUNTY, VIRGINIA
SCALE 1"=100' JULY 15, 2002

JOHN TYLER HIGHWAY - ROUTE #5 (66' R\W)

1.4 Mi. +/- to C/L
CHICKOHOMNY RIVER



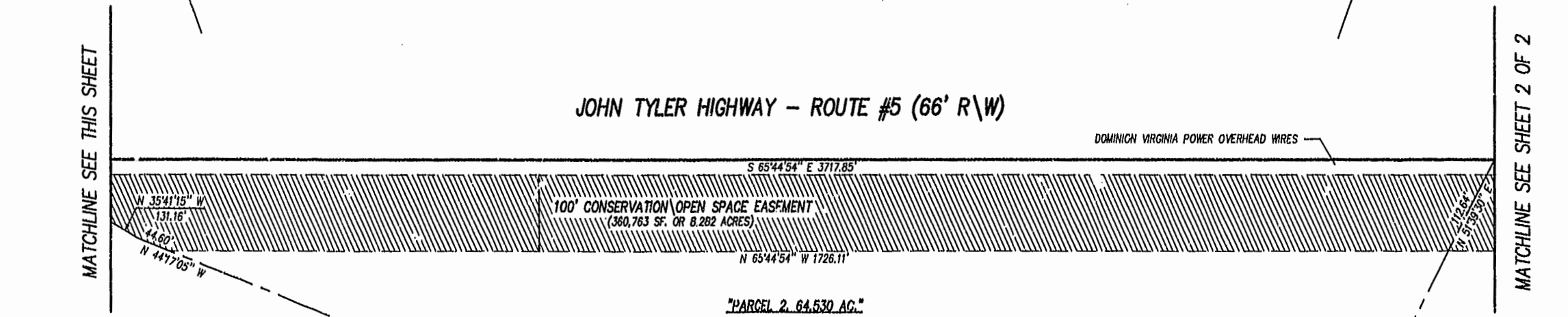
N\F
BAXIER I. BELL, JR.
(INSTR# 970010066)

"PARCEL 2, 64.530 AC."
CHUCK HOLLOW INC.
(INSTR# 010018146)

N\F
WILLIAMSBURG POTTERY FACTORY
(DB.324,PG.802)

MATCHLINE SEE THIS SHEET

JOHN TYLER HIGHWAY - ROUTE #5 (66' R\W)

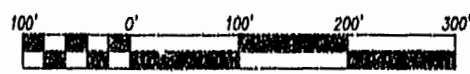


MATCHLINE SEE THIS SHEET

MATCHLINE SEE SHEET 2 OF 2

N\F
WILLIAMSBURG POTTERY FACTORY
(DB.324,PG.602)

"PARCEL 2, 64.530 AC."
CHUCK HOLLOW INC.
(INSTR# 010018146)



SCALE 1" = 100'

City of Williamsburg & County of James City
Circuit Court: This PLAT was recorded on
25 Sept. 2002
at 10:34 AM/M. PB. 97. PG. 85486
DOCUMENT # 020021999
BETSY B. WOOLRIDGE, CLERK
Betsy Woolridge Clerk



SHEET 1 OF 2

Rickmond Engineering Inc.

ENGINEERING SURVEYING LAND PLANNING

1643 MERRIMAC TRAIL
WILLIAMSBURG, VA 23185
PHONE: (757)229-1776
FAX: (757)229-4683

VINT HILL P.O. BOX 861647
WARRENTON, VA 20107
PHONE: (540)349-7730
FAX: (540)349-7731

www.rickmond.com

CHECKED BY: CBD	DRAWN BY: CBD	SCALE: 1"=100'	DATE: 07/15/02	JOB# 02158
--------------------	------------------	-------------------	-------------------	---------------