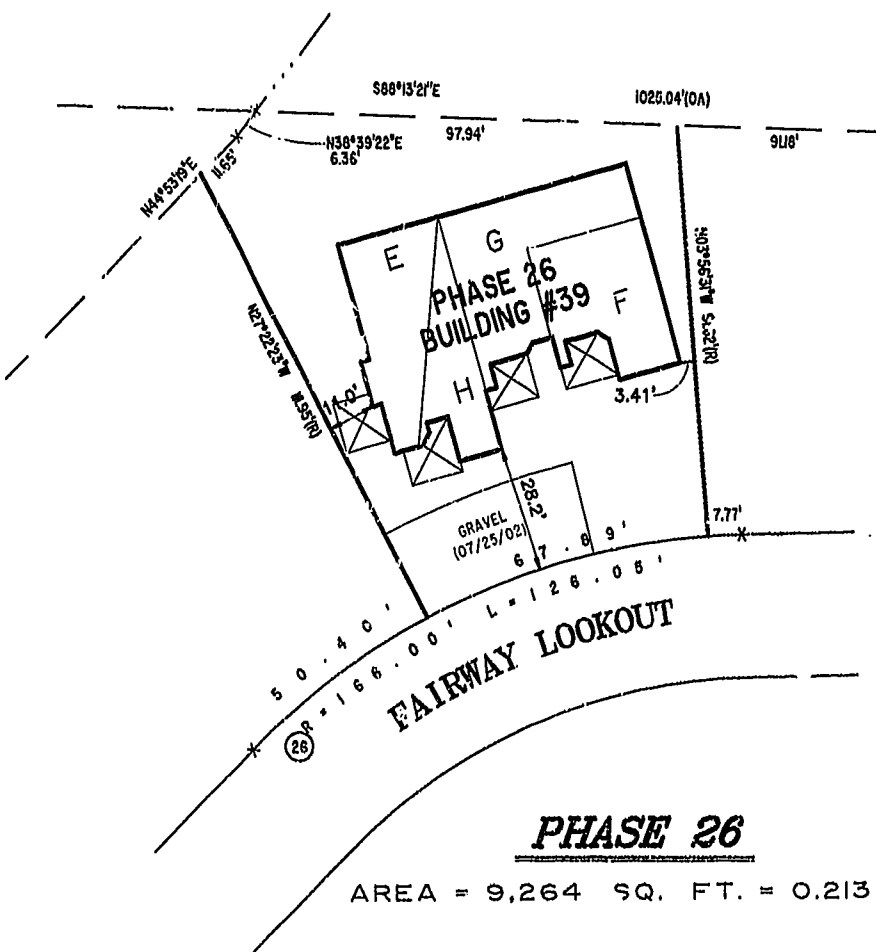
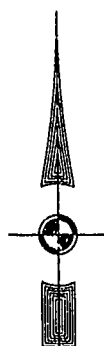
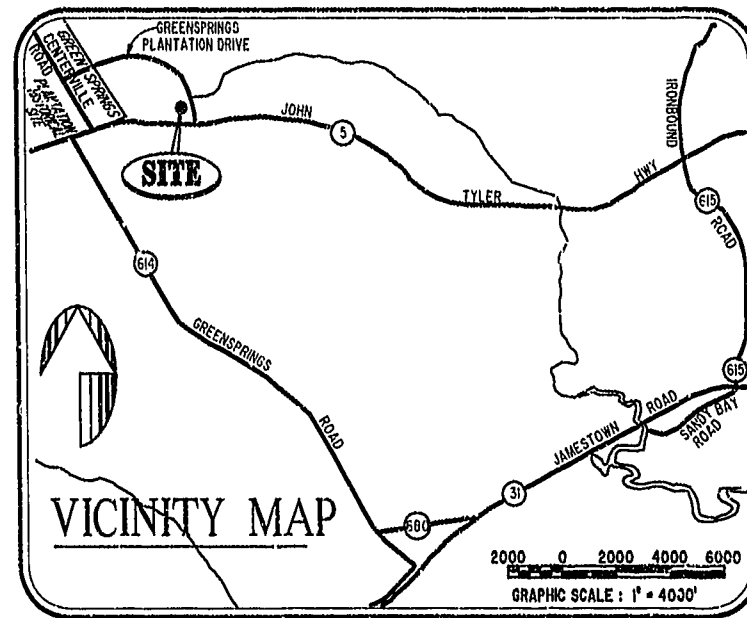


BUILDING NUMBER	UNIT NUMBER	UNIT TYPE	STREET ADDRESS
39	39-504	E	504 FAIRWAY LOOKOUT
39	39-506	H	506 FAIRWAY LOOKOUT
39	39-508	G	508 FAIRWAY LOOKOUT
39	39-510	F	510 FAIRWAY LOOKOUT

NOTES:

1. THE TOTAL AREA OF SITE IS 1,222,568 SQ.FT. (28.07 AC.) OF WHICH 136,660 SQ.FT. (3.173 AC.) IS ADDITIONAL LAND.
2. THE AREA OF THE SUBMITTED LAND IS 1,085,908 SQ.FT. (24.929 AC.)
3. THE COMMON AREA IS TO BE THE RESPONSIBILITY OF THE CONDOMINIUM ASSOCIATION AND HAS A TOTAL AREA OF 16.43 AC.



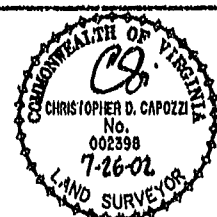
I CHRISTOPHER D. CAPOZZI, A CERTIFIED LAND SURVEYOR, DO HEREBY CERTIFY THAT THIS PLAT IS ACCURATE, AND THAT IT COMPLIES WITH THE PROVISIONS OF SECTION 55 - 79.58A OF THE CODE OF VIRGINIA. I FURTHER HEREBY CERTIFY THAT ALL UNITS OR PORTIONS THEREOF DEPICTED HEREON HAVE BEEN SUBSTANTIALLY COMPLETED.

THE UNDERSIGNED CERTIFIED LAND SURVEYOR CERTIFIES THAT HE HAS READ SECTION 55 - 79.58B OF THE CODE OF VIRGINIA, AND FINDS THIS PLAT TO BE ACCURATE AND IN COMPLIANCE WITH THE CODE. I FURTHER CERTIFY THAT ALL UNITS OR PORTIONS THEREOF DEPICTED HEREON HAVE BEEN SUBSTANTIALLY COMPLETED.

7-26-02  
DATE

*CP*  
LAND SURVEYOR No. 002398

City of Williamsburg & County of James City  
Circuit Court: This PLAT was recorded on  
August 7, 2002  
at 2:22 AM PM PG 87 PG 1222  
DOCUMENT # C20018083  
BETSY B. WOOLRIDGE, CLERK  
C. Lewis, Fee, Dep. Clerk



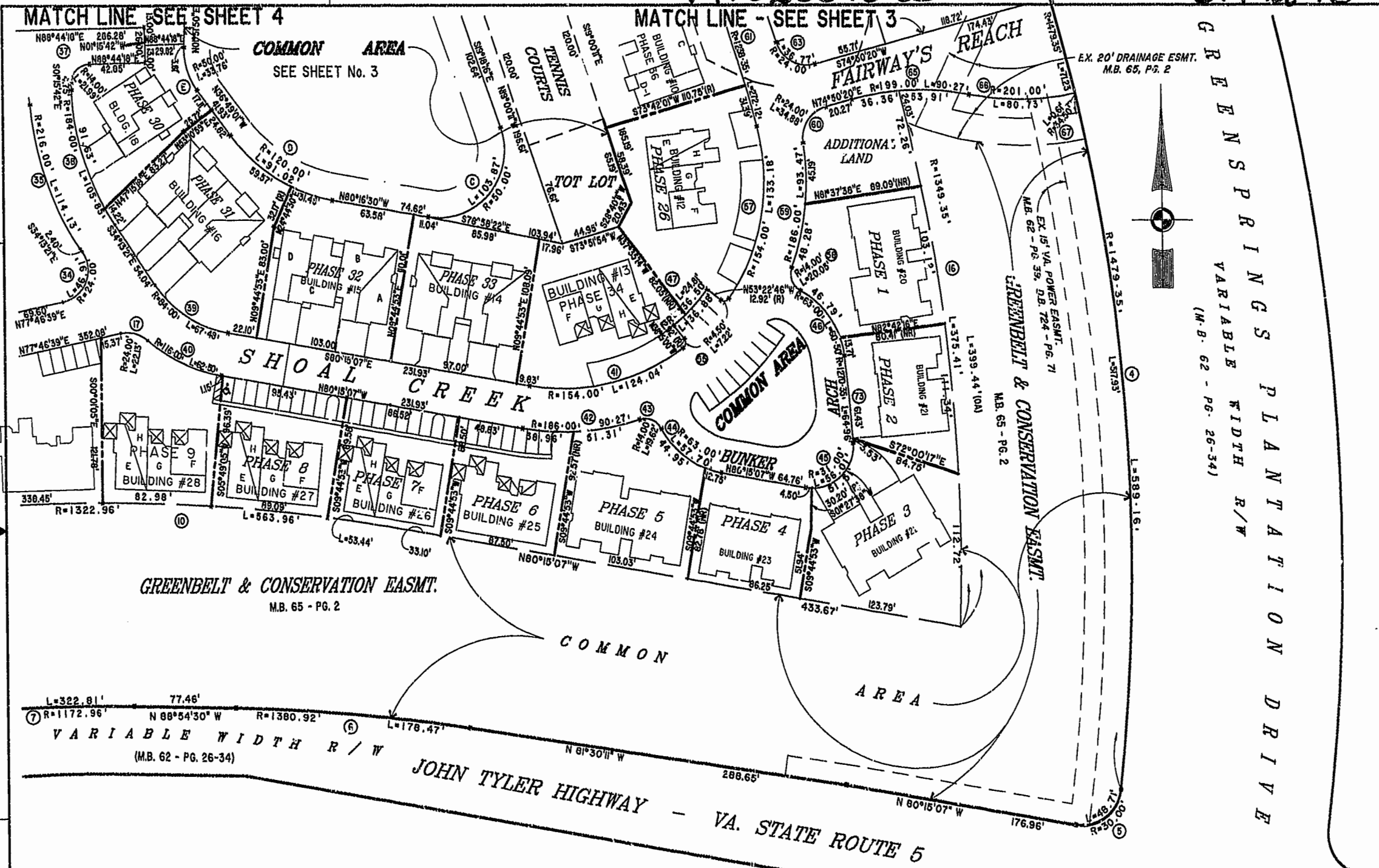
**Hassell & Folkes, P.C.**  
Engineers Surveyors Planners  
325 Volvo Parkway  
Chesapeake, VA 23320  
(757) 547-9531

DRAWN BY:	DATE
HJS	07/24/02
COMP BY:	DATE
HF	
CHECKED BY:	DATE
HBA	07/25/02

EXHIBIT "A" PHASE 26			
FAIRWAYS VILLAS			
AT GREENSPRINGS, A CONDOMINIUM			
FOR GREENSPRINGS DEVELOPMENT, L.C.			
BERKELEY DISTRICT JAMES CITY COUNTY, VIRGINIA			
SIZE	CONTRACT	DISK/BOX	FILENAME
C	95-079	6A0/16	FAIRWY26.DWG
		REF: 18/13	FWAYPLAT.DWG
SCALE: 1" = 25'	DATE: 07/25/02	SHEET 1 of 6	

#020018083

87 PAGE 18



GREENBELT & CONSERVATION EASMT.  
 EX. 15' VA. POWER EASMT. M.B. 65 - PG. 71  
 EX. 20' DRAINAGE ESMT. M.B. 65, PG. 2  
 GREENBELT & CONSERVATION EASMT. M.B. 65 - PG. 2  
 VARIABLE WIDTH R/W (M.B. 62 - PG. 26-34)  
 GREENBELT & CONSERVATION EASMT. M.B. 65 - PG. 2  
 VARIABLE WIDTH R/W (M.B. 62 - PG. 26-34)

**EXHIBIT "A" PHASE 26**  
**FAIRWAYS VILLAS**  
 AT  
**GREENSPRINGS, A CONDOMINIUM**  
 FOR  
**GREENSPRINGS DEVELOPMENT, L.C.**  
 BERKELEY DISTRICT JAMES CITY COUNTY, VIRGINIA



City of Williamsburg & County of James City  
 Circuit Court: This PLAT was recorded on  
August 7, 2002  
 at 2:22 AM PG. 27 OF 22  
 DOCUMENT # 020018083  
 BETSY B. WOOLRIDGE, CLERK  
C. New Free, Dep. Clerk

Hassell & Polkes, P.C. Engineers Surveyors Planners Chesapeake, VA 23320 (757) 547-3131	SIZE: C CONTRACT NO: 95-079	DISK/BOX: 6A6/16 REF: 18/13	FILENAME: FAIRWY26.DWG EWAYPLAT.DWG	REV.
SCALE: 1"=50'	DATE: 07/26/02	SHEET 2 of 6		

City of Williamsburg & County of James City  
 Circuit Court: This PLAT was recorded on  
 August 7, 2002  
 at 2:22 AM (M) HB 87 PG 17-22  
 DOCUMENT # 020018083  
 BETSY B. WOOLRIDGE, CLERK  
 C. David Fell, Dep. Clerk

46-1-01-0-0001  
 "GREENSPRINGS PLANTATION"

(08 322, PG 254)

EXIST. 20' JAMES CITY COUNTY SERVICE  
 AUTHORITY SAN. SEWER EASEMENT AS  
 SHOWN IN AS-BUILT LOCATION D.B. 141 - PG. 388

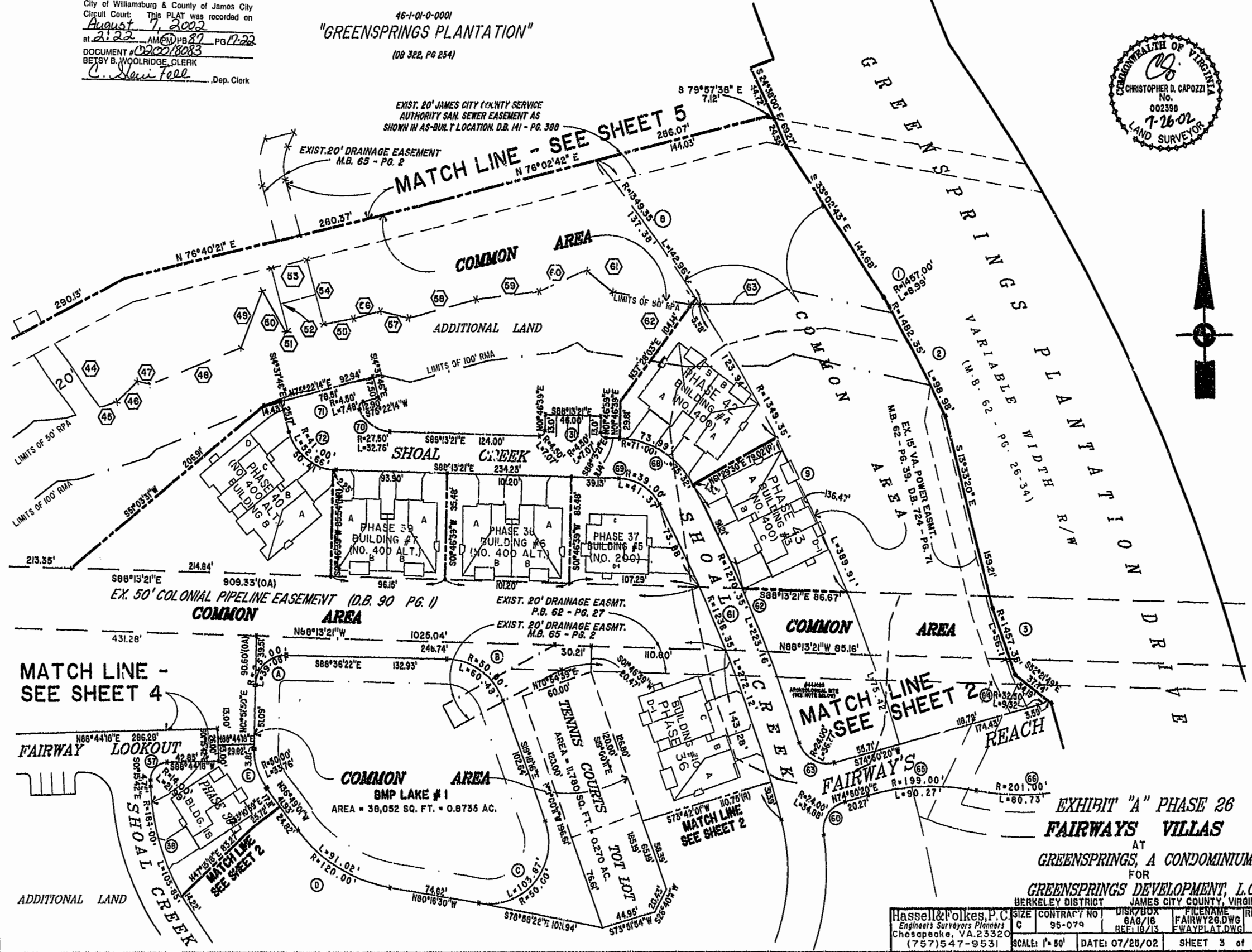


EXHIBIT "A" PHASE 26  
 FAIRWAYS VILLAS  
 AT  
 GREENSPRINGS, A CONDOMINIUM  
 FOR  
 GREENSPRINGS DEVELOPMENT, L.C.  
 BERKELEY DISTRICT JAMES CITY COUNTY, VIRGINIA

Hassell & Polkes, P.C. Engineers Surveyors Planners Chesapeake, VA 23320 (757) 547-9531	SIZE: C CONTRACT NO: 95-079	DISK/BOX: 8A0/16 REF: 16/13	FILE NAME: FAIRWAY26.DWG FWAYPLAT.DWG	REV.:
SCALE: 1"=80'	DATE: 07/28/02	SHEET 3 of 6		



City of Williamsburg & County of James City  
 Circuit Court: This PLAT was recorded on  
August 7, 2002  
 at 2:22 AM/PM PB 87 PG 17 of 22  
 DOCUMENT # 020018083  
 BETSY B. WOOLRIDGE, CLERK  
C. Ann Fell, Dep. Clerk



46-1-01-0-0001  
 "GREENSPRINGS PLANTATION"  
 (DB 322, PG 254)

EXIST. 20' JAMES CITY COUNTY SERVICE  
 AUTHORITY SAN. SEWER EASEMENT AS  
 SHOWN IN AS-BUILT LOCATION. D.B. 141 - PG. 388

EXIST. 20' DRAINAGE EASEMENT  
 M.B. 65 - PG. 2

EXIST. 20' DRAINAGE EASMT:  
 M.B. 65 - PG. 2

N 76°40'21" E  
 20' SANITARY SEWER EASEMENT

COMMON AREA  
 LIMITS OF 50' RPA  
 LIMITS OF 100' RMA

EX. 50' COLONIAL PIPELINE EASEMENT (D.B. 90 PG. 1)  
 PHASE 26 COMMON AREA

MATCH LINE  
 SEE SHEET 4

COMMON AREA

ADDITIONAL LAND

MATCH LINE  
 SEE SHEET 4

COMMON AREA

BMP LAKE # 1  
 AREA: 38,052 SQ. FT. =  
 .8735 AC.  
 SEE SHEET 3 FOR DETAIL

EXHIBIT "A" PHASE 26  
 FAIRWAYS VILLAS  
 AT  
 GREENSPRINGS, A CONDOMINIUM  
 FOR  
 GREENSPRINGS DEVELOPMENT, L.C.  
 BERKELEY DISTRICT JAMES CITY COUNTY, VIRGINIA



Hassell & Folkes, P.C. Engineers Surveyors Planners Chesapeake, VA 23320 (757) 547-9531	CONTRACT NO 95-079	DISK/BOX 6A9/16 REF: 18/13	FILENAME FAIRWAY26.DWG FWAYPLAT.DWG	REV.
SCALE: 1"=50'	DATE: 07/26/02	SHEET 5 of 6		

SEE SHEET 3  
 MATCH LINE



Nº	BEARING	DISTANCE	Nº	BEARING	DISTANCE	Nº	BEARING	DISTANCE	Nº	BEARING	DISTANCE
1	NORTH	155.06'	21	N24°18'39"W	18.00'	41	N73°24'07"E	6.57'	61	S50°49'30"E	28.39'
2	N78°19'26"E	40.47'	22	N69°19'39"W	7.07'	42	N35°32'25"W	59.16'	62	S81°14'26"E	64.31'
3	N40°42'39"E	15.76'	23	N44°31'02"E	43.89'	43	N63°00'24"E	20.22'	63	N89°22'10"E	8.15'
4	N46°05'27"E	32.02'	24	N25°21'31"W	150.65'	44	S35°32'25"E	63.02'			
5	N78°05'22"E	27.59'	25	N83°05'23"E	20.41'	45	N73°24'07"E	14.72'			
6	N16°44'45"W	12.04'	26	S25°21'31"E	136.97'	46	N46°21'12"E	24.05'			
7	N27°24'57"W	23.32'	27	N19°01'26"E	6.90'	47	S77°39'56"E	11.29'			
8	N24°46'40"E	25.18'	28	N83°59'32"E	24.16'	48	N68°43'48"E	80.58'			
9	N13°22'46"W	18.38'	29	N40°41'58"E	47.56'	49	N21°08'45"E	48.92'			
10	N19°16'53"E	32.76'	30	N46°49'41"E	23.74'	50	S30°18'14"E	37.69'			
11	N51°25'01"E	26.57'	31	N66°20'36"E	33.45'	51	N79°32'01"E	1.93'			
12	N46°33'07"E	31.05'	32	N44°53'19"E	76.32'	52	N14°37'46"W	52.29'			
13	N81°21'55"E	40.31'	33	N38°39'22"E	40.18'	53	N76°40'21"E	30.01'			
14	N17°35'03"E	32.98'	34	N63°44'13"E	53.14'	54	S14°37'46"E	53.80'			
15	N02°42'14"E	41.60'	35	N72°23'40"E	52.44'	55	N79°32'01"E	25.17'			
16	N65°30'48"W	31.89'	36	N80°42'36"E	43.97'	56	N74°56'16"E	22.42'			
17	N21°18'53"W	19.03'	37	N58°37'17"E	38.60'	57	S76°45'41"E	24.45'			
18	N35°55'39"E	24.19'	38	N54°09'52"E	41.40'	58	N75°14'55"E	58.28'			
19	N37°34'05"W	17.46'	39	N54°09'52"E	37.13'	59	N83°10'12"E	52.44'			
20	N29°31'19"W	11.05'	40	N84°42'43"E	25.55'	60	N68°02'13"E	42.50'			

CURVE DATA

Nº	DELTA	RADIUS	LENGTH	TANGENT	CHORD	Nº	DELTA	RADIUS	LENGTH	TANGENT	Nº	DELTA	RADIUS	LENGTH	TANGENT
1	00°21'13"	1457.00'	8.99'	4.50'	S29°17'32"E 8.99'	36	87°18'45"	24.00'	36.57'	22.90'	71	95°17'54"	4.50'	7.42'	4.94'
2	03°49'33"	1482.35'	98.98'	49.51'	S27°33'21"E 98.98'	37	90°00'00"	14.00'	21.99'	14.00'	72	73°35'34"	41.00'	52.66'	30.67'
3	02°12'22"	1457.35'	56.11'	28.06'	S18°24'28"E 56.11'	38	32°57'39"	184.00'	105.88'	51.43'	73	02°55'47"	1270.35'	64.96'	32.49'
4	22°49'06"	1479.35'	589.16'	298.53'	S04°41'57"E 185.27'	39	48°01'46"	84.00'	67.48'	35.68'					
5	93°02'17"	30.00'	48.71'	31.83'	S53°13'44"W 43.54'	40	30°52'07"	116.00'	62.50'	32.03'					
6	07°24'18"	1380.92'	178.47'	89.36'	N85°12'21"W 178.35'	41	46°08'54"	154.00'	124.04'	65.60'					
7	15°46'06"	1172.96'	322.81'	162.43'	S83°12'26"W 321.79'	42	27°48'28"	186.00'	90.27'	48.04'					
8	06°04'13"	1349.35'	142.96'	71.55'		43	80°16'51"	14.00'	19.62'	11.81'					
9	16°33'24"	1349.35'	389.91'	196.32'		44	82°28'22"	63.00'	57.70'	31.65'					
10	24°25'28"	1322.96'	563.96'	286.33'		45	103°31'20"	31.00'	56.01'	39.34'					
						46	55°01'24"	63.00'	60.50'	32.81'					
						47	10°24'49"	136.50'	24.81'	12.44'					
16	16°57'40"	1349.35'	399.44'	201.19'		55	91°55'00"	4.50'	7.22'	4.65'					
17	82°50'21"	24.00'	22.13'	11.92'		56	15°28'57"	136.50'	36.88'	18.56'					
18	44°05'16"	71.00'	54.63'	28.75'		57	49°33'05"	154.00'	133.18'	71.08'					
19	55°16'28"	14.00'	13.51'	7.33'		58	82°03'57"	14.00'	20.05'	12.18'					
20	34°28'27"	42.00'	25.27'	13.03'		59	28°47'34"	186.00'	93.47'	47.74'					
21	26°07'06"	52.50'	23.93'	12.18'		60	83°16'14"	24.00'	34.88'	21.33'					
22	23°54'28"	68.00'	28.37'	14.40'		61	12°38'28"	1838.35'	272.12'	136.61'					
23	76°36'32"	14.00'	18.72'	11.06'		62	10°03'54"	1270.35'	223.16'	111.87'					
24	15°26'37"	71.00'	19.14'	9.63'		63	87°47'18"	24.00'	36.77'	23.09'					
25	50°22'21"	116.00'	101.98'	54.55'		64	18°28'32"	32.50'	9.32'	4.69'					
26	43°30'21"	166.00'	128.05'	66.24'		65	28°59'28"	199.00'	90.27'	45.93'					
27	43°30'21"	134.00'	101.75'	53.42'		66	23°00'40"	201.00'	80.73'	40.91'					
28	24°31'17"	84.00'	35.95'	18.25'		67	01°01'24"	34.50'	0.61'	0.31'					
29	93°14'42"	4.50'	7.32'	4.76'		68	60°47'05"	71.00'	78.32'	41.64'					
30	22°36'22"	66.50'	26.24'	13.29'		69	60°47'05"	39.00'	41.37'	22.87'					
31	90°00'00"	4.50'	7.07'	4.50'		70	68°17'41"	27.50'	32.78'	18.68'					
32	97°04'56"	39.00'	66.08'	44.15'											
33	136°47'38"	4.50'	10.74'	11.05'											
34	112°00'00"	24.00'	46.91'	35.88'											
35	30°16'23"	216.00'	114.13'	58.43'											

LAKE CURVE DATA

Nº	DELTA	RADIUS	LENGTH	TANGENT
A	89°31'48"	25.00'	39.08'	24.80'
B	69°18'06"	50.00'	60.48'	34.56'
C	119°01'46"	50.00'	103.87'	64.93'
D	43°27'29"	120.00'	91.02'	47.82'
E	38°40'50"	50.00'	33.76'	17.55'

City of Williamsburg & County of James City  
 Circuit Court: This PLAT was recorded on  
August 7, 2002  
 at 8:22 AM PM PB 87 PG 12 of 22  
 DOCUMENT # 020018083  
 BETSY B. WOOLRIDGE, ERK  
C. K. Hill, Dep. Clerk

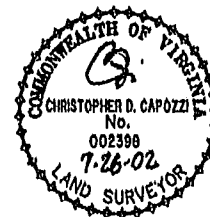


EXHIBIT "A" PHASE 26  
 FAIRWAYS VILLAS  
 AT  
 GREENSPRINGS, A CONDOMINIUM  
 FOR  
 GREENSPRINGS DEVELOPMENT, L.C.  
 BERKELEY DISTRICT JAMES CITY COUNTY, VIRGINIA

Hassell & Polkes, P.C. Engineers, Surveyors, Planners Chesapeake, VA, 23320 (757)547-9531	SIZE: C	CONTRACT NO: 95-079	DISK/BOX: 8/6/16	FILE NAME: FAIRWAY26.DWG	REV.:
SCALE: NONE	DATE: 07/28/02	SHEET 6 of 6			