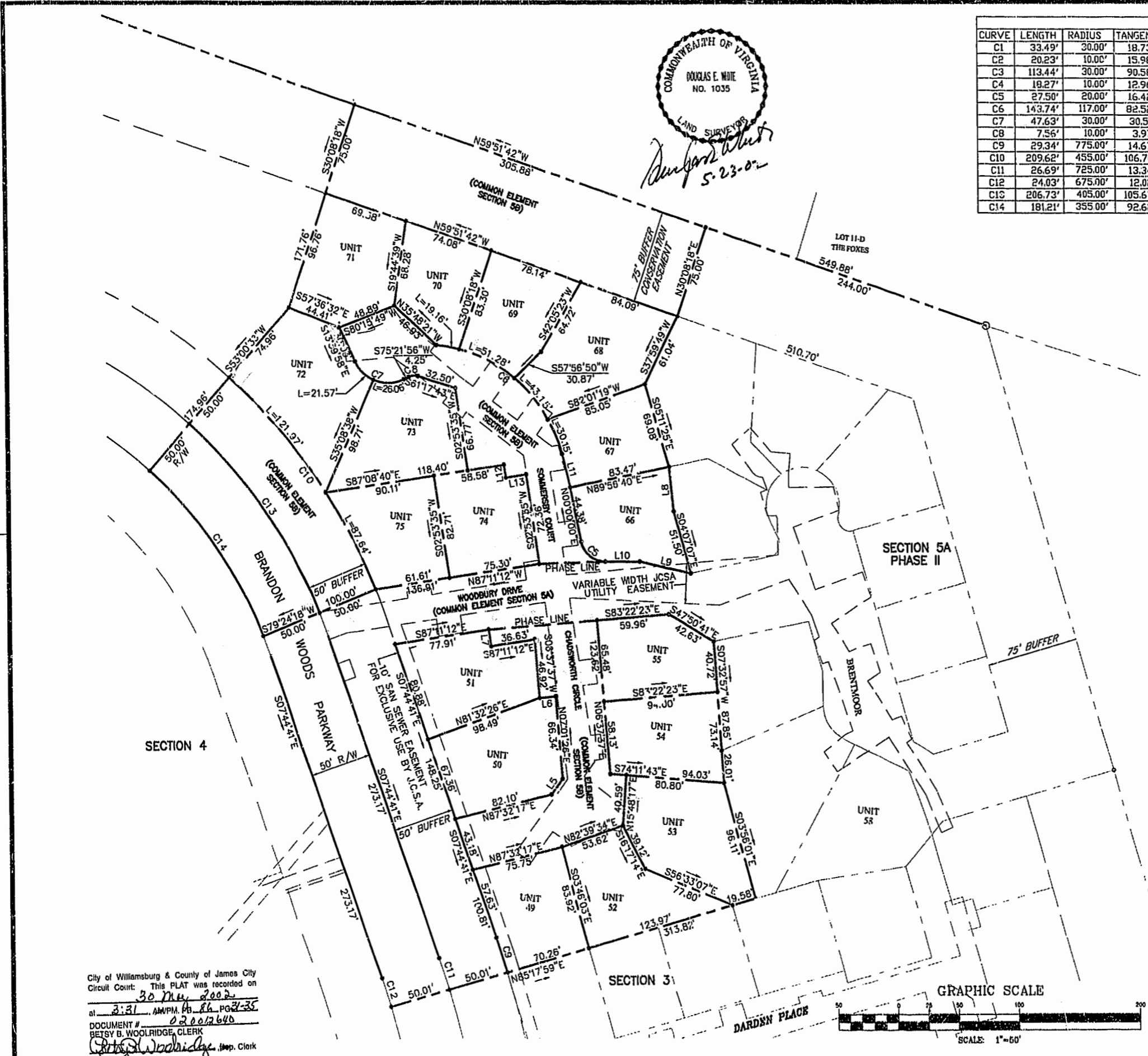




CURVE TABLE						
CURVE	LENGTH	RADIUS	TANGENT	CHORD	CHORD BEARING	DELTA
C1	33.49'	30.00'	18.73'	31.78'	S21°17'25"E	63°57'48"
C2	20.23'	10.00'	15.98'	16.95'	S36°44'35"E	115°54'53"
C3	113.44'	30.00'	90.58'	56.96'	N87°06'38"W	216°39'00"
C4	19.27'	10.00'	12.96'	15.83'	N37°26'35"E	104°41'07"
C5	27.50'	20.00'	16.42'	25.39'	S39°23'37"E	78°47'14"
C6	143.74'	117.00'	82.52'	134.87'	N38°20'19"W	70°23'31"
C7	47.63'	30.00'	30.51'	42.78'	S59°09'01"E	90°58'06"
C8	7.56'	10.00'	3.97'	7.39'	N82°57'54"W	43°20'21"
C9	29.34'	775.00'	14.67'	29.34'	N06°39'37"W	2°10'09"
C10	209.62'	455.00'	106.70'	207.77'	N23°47'35"W	26°23'45"
C11	26.69'	725.00'	13.34'	26.68'	N06°41'25"W	2°06'32"
C12	24.03'	675.00'	12.02'	24.03'	N06°43'30"W	2°02'23"
C13	206.73'	405.00'	105.67'	204.49'	N22°22'04"W	29°14'46"
C14	181.21'	355.00'	92.62'	179.25'	N22°22'04"W	29°14'46"

LINE TABLE		
LINE	LENGTH	BEARING
L1	19.45	S48°17'53"E
L2	4.3	N21°12'52"E
L4	15.34	N14°53'59"W
L5	15.26	S47°16'51"W
L6	13.10	S83°22'23"E
L7	13.44	N02°48'48"E
L8	35.95	N05°46'13"E
L9	43.13	N66°03'20"W
L10	28.57	N78°47'14"W
L11	27.56	S03°08'33"E
L12	10.30	S02°53'35"W
L13	16.72	S87°08'40"E



CONDOMINIUM PLAT  
OF  
SECTION 5B  
(A PORTION OF PHASE II)  
BRANDON WOODS  
JAMES CITY COUNTY, VIRGINIA  
SCALE: 1"=50' DATE: 5/21/02  
SHEET 2 OF 5



Engineers Planners Surveyors  
Landscape Architects Environmental Consultants  
4029 IRONBOUND ROAD, SUITE 100  
WILLIAMSBURG, VA 23188  
TEL. (757)253-2975 FAX (757)229-0049

City of Williamsburg & County of James City  
Circuit Court: This PLAT was recorded on  
30 May 2002  
at 3:31 AM/PM, Pg. 86, Pgs. 31-35  
DOCUMENT # 020012640  
BETSY B. WOOLRIDGE, CLERK  
*Betsy Woolridge*, Dep. Clerk

