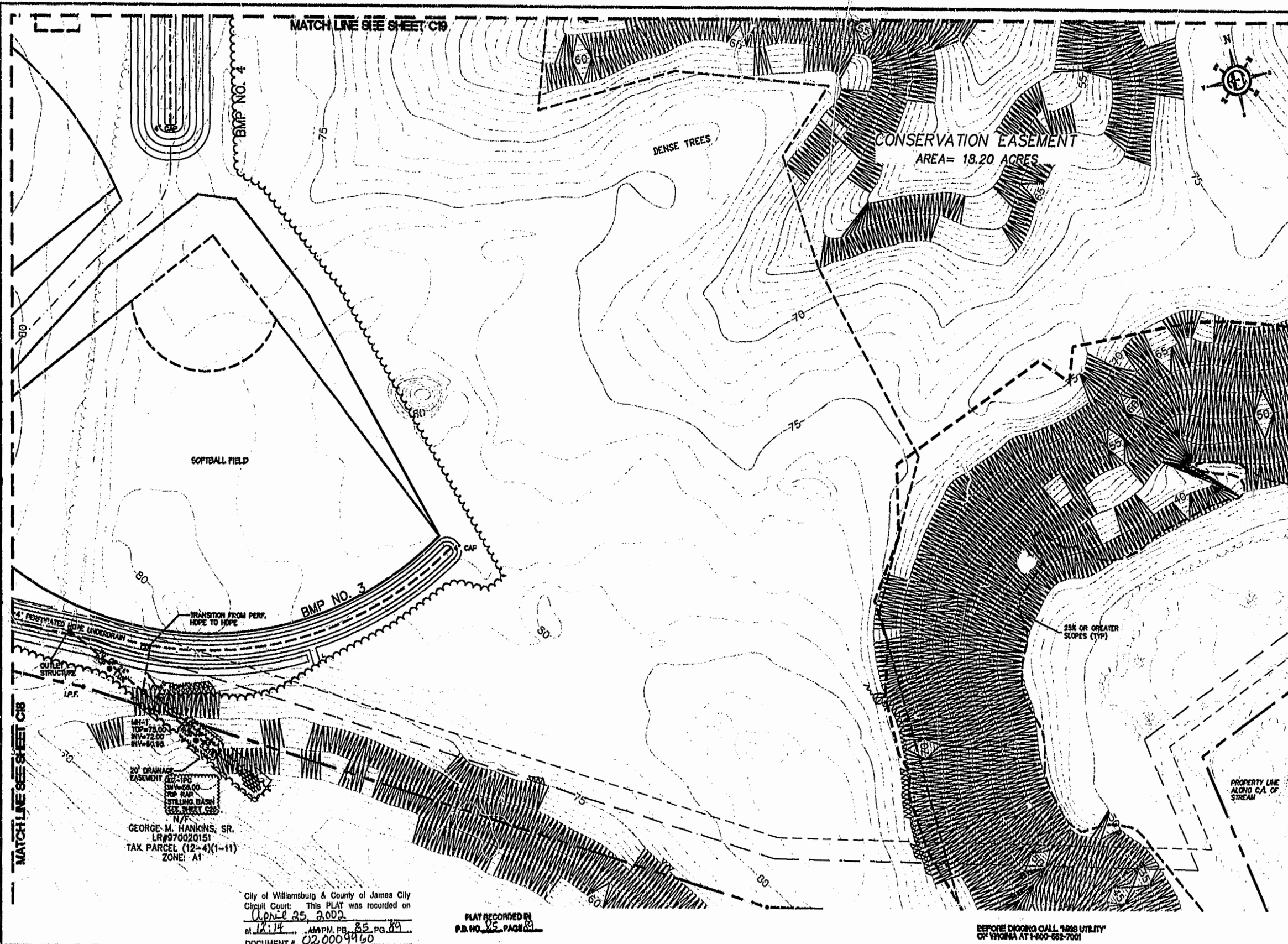


85 PAGE 89

#02,000 9960



MATCH LINE SEE SHEET C18

MATCH LINE SEE SHEET C19

MH-1
 TOP=78.00
 RIV=72.00
 RIV=60.88
 20' DRAINAGE
 EASEMENT
 12" I.P.C.
 SW=24.00
 R.P. R.A.P.
 STILLING BASIN
 SEE SHEET C20
 N/P
 GEORGE M. HANKINS, SR.
 LR#970020151
 TAX PARCEL (12-4)(1-11)
 ZONE: A1

City of Williamsburg & County of James City
 Circuit Court: This PLAT was recorded on
April 25, 2002
 at 12:14 AM/PM, PG. 85 PG. 89
 DOCUMENT # 02,000 9960
 BEYSY B. WOOLRIDGE, CLERK
Debra R. Martin, Dep. Clerk

PLAT RECORDED IN P.D. NO. 85 PAGE 89

BEFORE DIGGING CALL 1-888 UTILITY OF VIRGINIA AT 1-800-662-7001

Rickmond Engineering, Inc.
 Engineering Surveying Land Planning
 1545 Lakeshore Trl. Suite 100
 Williamsburg, VA 23185
 Phone: (540) 349-7776
 Fax: (540) 349-7731
 www.rickmond.com

Drawn By: KAM
 Scale: NTS
 Date: 10.24.01

Developed By: KAM

1	CALL REV PER COUNTY COMPOSITE LIB STD 1/22/02	DATE	3.31.02
2	CALL REV PER COUNTY COMPOSITE LIB STD 12/10/01	DATE	12.10.01
3	CALL REV PER COUNTY COMPOSITE LIB STD 12/12/01	DATE	12.12.01

WILLIAMSBURG CHRISTIAN ACADEMY
 VIRGINIA
 UTILITY PLAN

Job Number: 01158
 Sheet No: C20