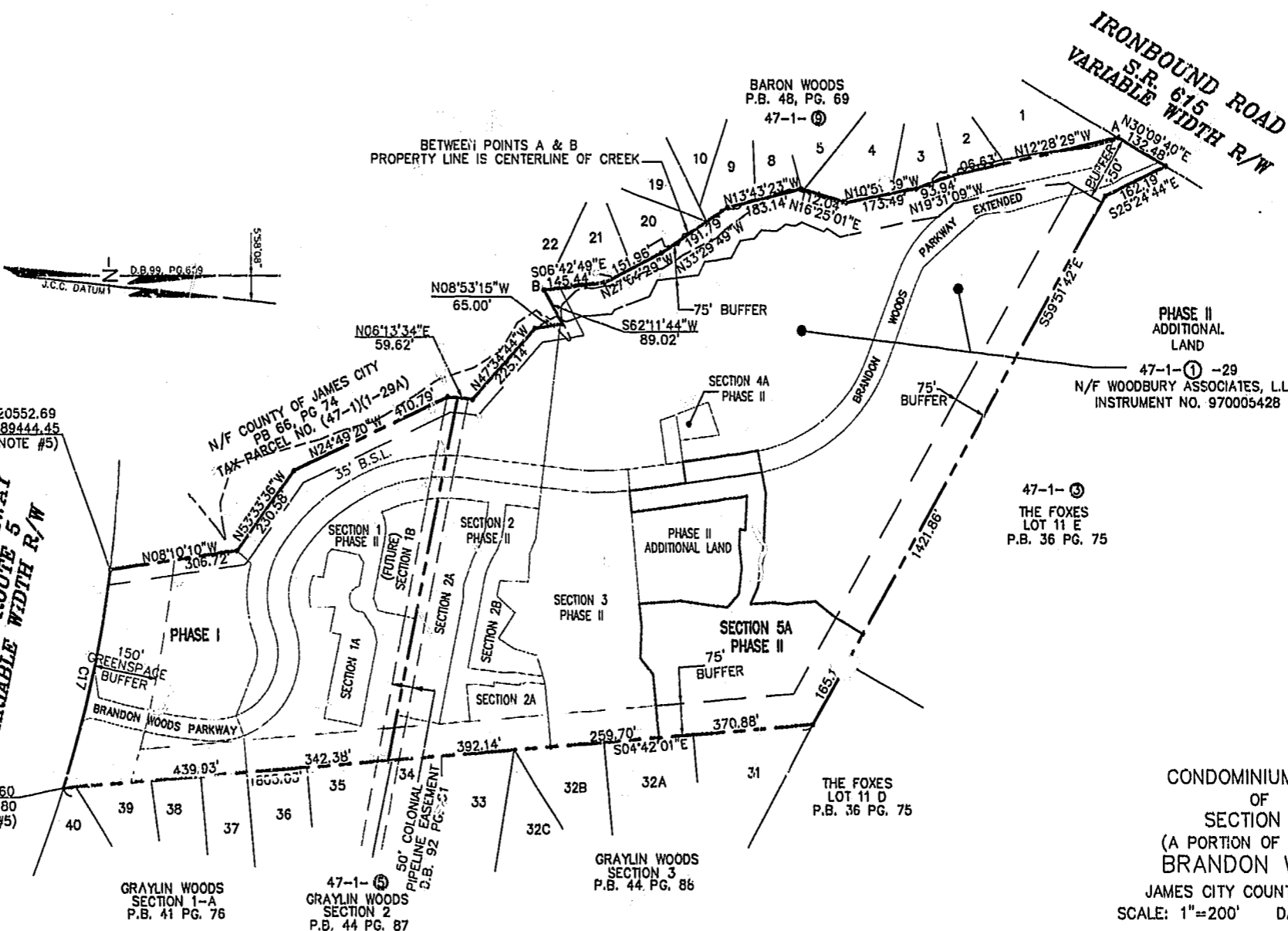
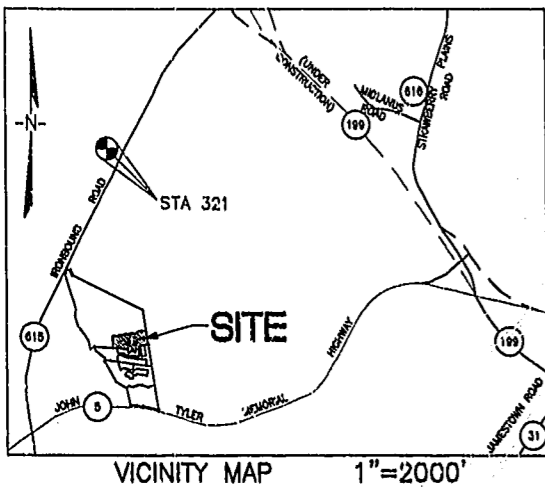


CURVE TABLE						
CURVE	LENGTH	RADIUS	TANGENT	CHORD BEARING	CHORD	DELTA
C17	521.88'	2904.79'	261.65'	N77°04'44"W	521.18'	10°17'38"

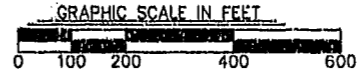


N=3620552.69  
E=11889444.45  
(SEE NOTE #5)

**JOHN TYLER HIGHWAY  
STATE ROUTE 5  
VARIABLE WIDTH R/W**

N=3620489.60  
E=11989961.80  
(SEE NOTE #5)

City of Williamsburg & County of James City  
Circuit Court: This PLAT was recorded on  
April 25, 2002  
at 9:23 AM P.M. PG. 85  
DOCUMENT # 02009913  
BETSY B. WOOLRIDGE, CLERK  
*Mona Powell*, Dep. Clerk



CONDOMINIUM PLAT  
OF  
SECTION 5A  
(A PORTION OF PHASE II)  
BRANDON WOODS  
JAMES CITY COUNTY, VIRGINIA  
SCALE: 1"=200' DATE: 4/16/02  
SHEET 1 OF 4

**LANDMARK  
DESIGN GROUP**  
Engineers • Planners • Surveyors  
Landscape Architects • Environmental Consultants  
4029 IRONBOUND ROAD SUITE 100  
WILLIAMSBURG VA 23188  
TEL (757) 253-2975 FAX(757) 229-0049