

AMENDED PLAT OF SUBDIVISION  
WATERFORD  
AT  
POWHATAN SECONDARY  
PHASE THIRTY-TWO  
BERKELEY DISTRICT  
JAMES CITY COUNTY, VIRGINIA

DATE: 10/21/98 SHEET 2 OF 3 SCALE: 1"=100'

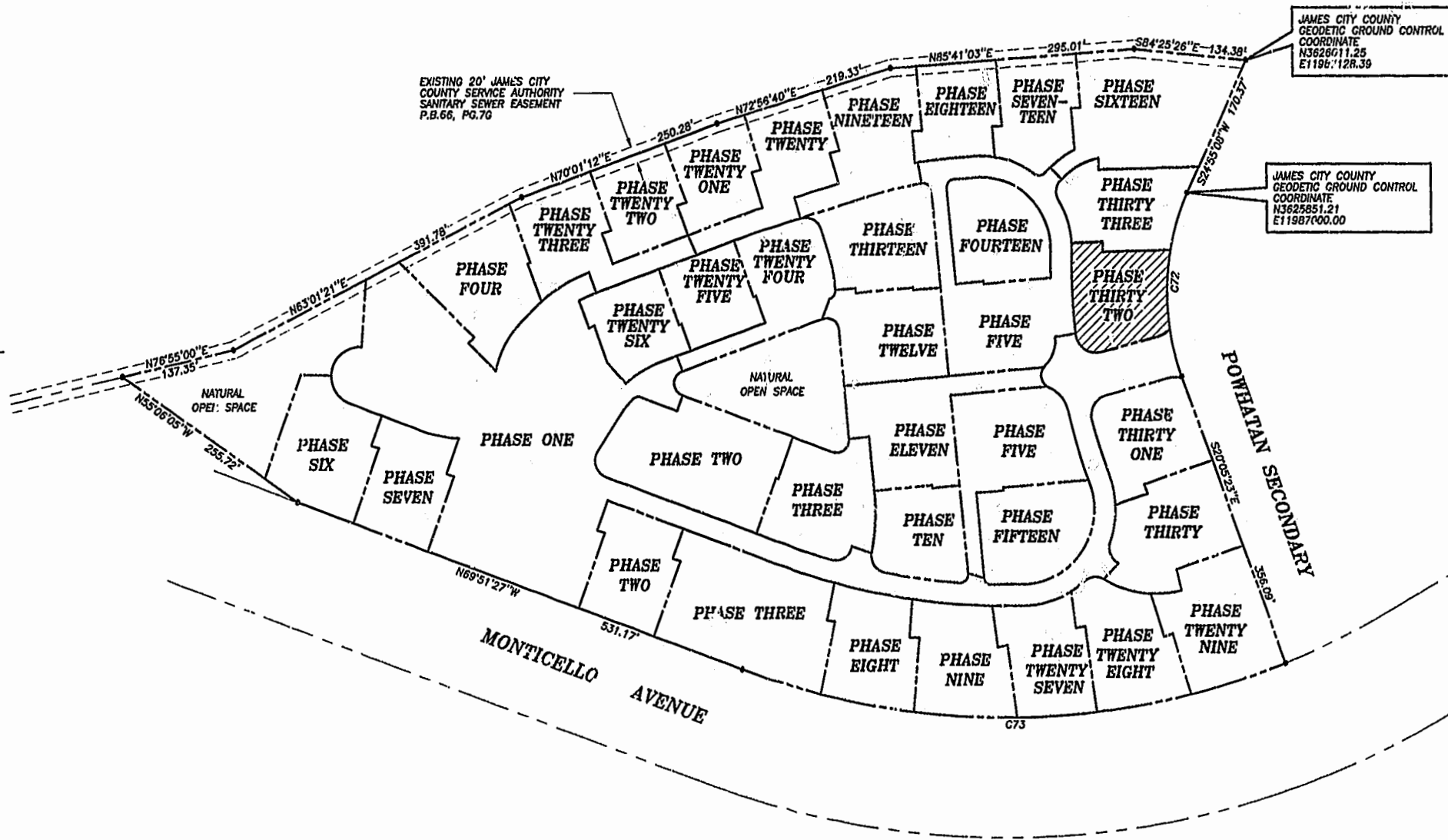
PROJECT NO: 97-008 DRAWN BY: SJB



SLEDD & ASSOCIATES, P.C.  
ENGINEERS PLANNERS SURVEYORS  
11832 ROCK LANDING DRIVE, SUITE 203  
NEWPORT NEWS, VIRGINIA 23606  
(757) 873-3386

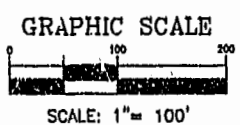
00'32'24"  
JAMES CITY COUNTY  
LAND SURVEYING CONTROL  
PLAT BOOK 66, PAGE 70

NOW OR FORMERLY  
POWHATAN ENTERPRISES, INC.



JAMES CITY COUNTY  
GEODETIC GROUND CONTROL  
COORDINATE  
N3628611.25  
E11987128.39

JAMES CITY COUNTY  
GEODETIC GROUND CONTROL  
COORDINATE  
N3628851.21  
E11987000.00



SCALE: 1"= 100'

CURVE DATA

NUMBER	DELTA	RADIUS	LENGTH	TANGENT	CHORD	CHORD BEARING
C72	45°00'31"	280.00'	219.95'	116.00'	214.34'	S02°24'52"W
C73	41°26'14"	924.91'	698.91'	349.84'	654.43'	S89°25'26"W

City of Williamsburg & County of James City  
Circuit Court: This PLAT was recorded on  
April 23, 2002  
at 10:13 (AM) P.M. 85 pg 81-83  
DOCUMENT # 020009701  
BETSY B. WOOLRIDGE, CLERK  
Debra Rowland, Dep. Clerk