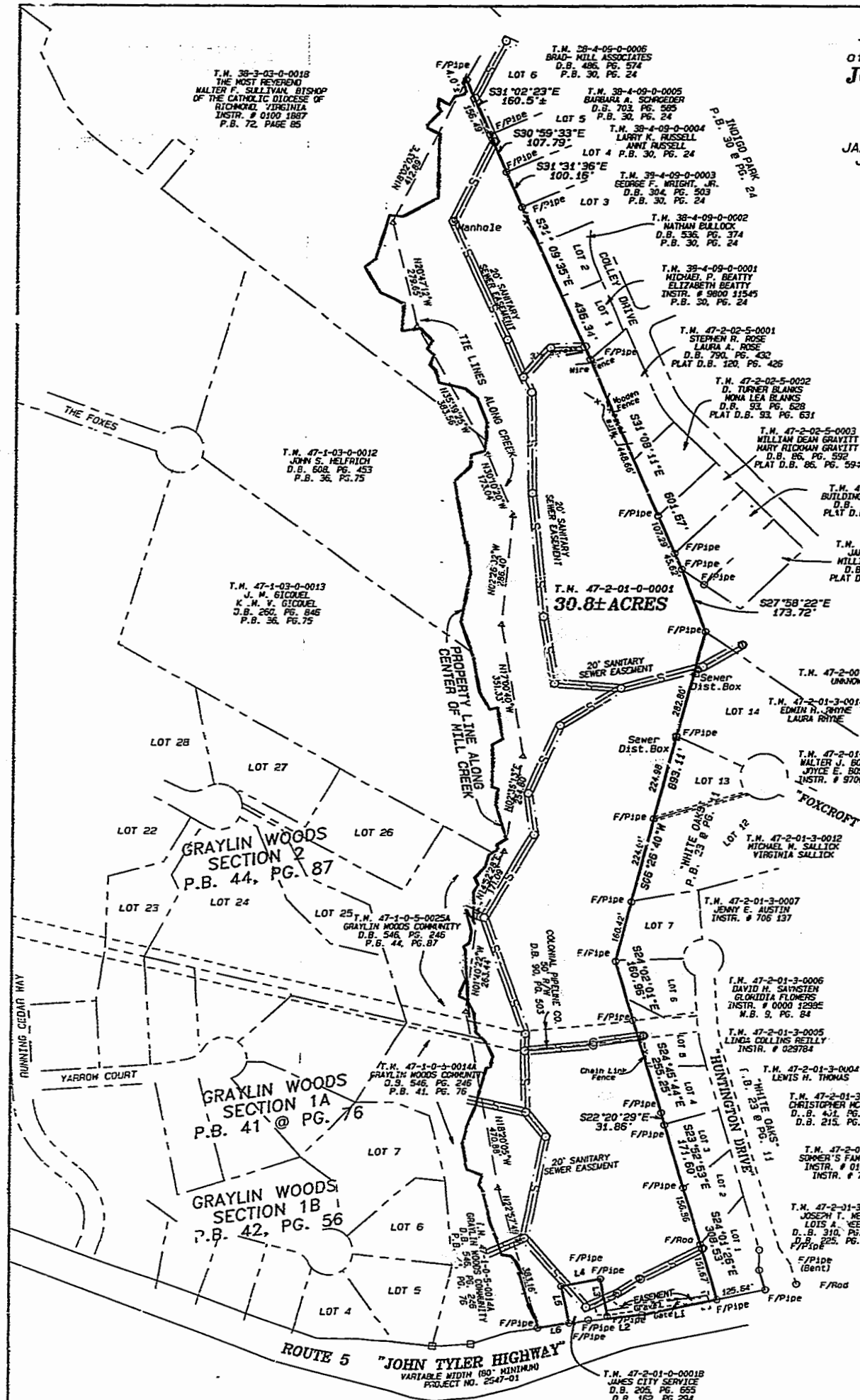


BOUNDARY SURVEY
of a portion of the Estate of
JOHN G. WARBURTON
being the tract known as
INDIGO POND
being in the
JAMESTOWN MAGISTERIAL DISTRICT
JAMES CITY COUNTY, VIRGINIA



T.M. 38-3-03-0-0018
THE MOST REVEREND
MALTER F. SULLIVAN, BISHOP
OF THE CATHOLIC DIOCESE OF
RICHMOND, VIRGINIA
INSTR. # 0100 1827
P.B. 72, PAGE 85

T.M. 28-4-05-0-0005
BRAD-MILL ASSOCIATES
D.B. 486, PG. 574
P.B. 30, PG. 24

T.M. 38-4-09-0-0005
BARBARA A. SCHWEDER
D.B. 703, PG. 565
P.B. 30, PG. 24

T.M. 38-4-09-0-0004
LARRY K. RUSSELL
ANNI RUSSELL
D.B. 304, PG. 503
P.B. 30, PG. 24

T.M. 38-4-09-0-0003
GEORGE F. WRIGHT, JR.
D.B. 304, PG. 503
P.B. 30, PG. 24

T.M. 38-4-09-0-0002
NATHAN BULLOCK
D.B. 536, PG. 374
P.B. 30, PG. 24

T.M. 38-4-09-0-0001
MICHAEL P. BEATTY
ELIZABETH BEATTY
INSTR. # 9800 11545
P.B. 30, PG. 24

T.M. 47-2-02-5-0001
STEPHEN R. ROSE
LAURA A. ROSE
D.B. 700, PG. 432
PLAT D.B. 120, PG. 426

T.M. 47-2-02-5-0002
D. TURNER BLANKS
MONA LEA BLANKS
D.B. 50, PG. 628
PLAT D.B. 93, PG. 631

T.M. 47-2-02-5-0003
WILLIAM DEAN GRAYITT
MARY RICKMAN GRAYITT
D.B. 26, PG. 592
PLAT D.B. 86, PG. 592

T.M. 47-2-02-5-0004
BUILDING SERVICE, INC.
D.B. 87, PG. 294
PLAT D.B. 87, PG. 297

T.M. 47-2-02-5-0005
JAMES B. BOWRY
MILLICENT D. BOWRY
D.B. 84, PG. 521
PLAT D.B. 84, PG. 524

T.M. 47-1-03-0-0012
JOHN S. HELFRICH
D.B. 608, PG. 453
P.B. 36, PG. 75

T.M. 47-1-03-0-0013
J. W. GICQUEL
K. M. V. GICQUEL
D.B. 260, PG. 846
P.B. 36, PG. 75

T.M. 47-2-01-0-0001
30.8± ACRES

T.M. 47-2-00-0-0008
UNKNOWN

T.M. 47-2-01-3-0014
EDWIN H. RHYME
LAURA RHYME

T.M. 47-2-01-3-0013
WALTER J. BOSHOEK
JOYCE E. BOSHOEK
INSTR. # 97000 7270

T.M. 47-2-01-3-0012
MICHAEL M. SALLICK
VIRGINIA SALLICK

T.M. 47-2-01-3-0007
JENNY E. AUSTIN
INSTR. # 706 137

T.M. 47-2-01-3-0006
DAVID H. SAVASTEN
GLOKIDIA FLOWERS
INSTR. # 0000 1299E
N.B. 9, PG. 84

T.M. 47-2-01-3-0005
LINDA COLLINS REILLY
INSTR. # 029784

T.M. 47-2-01-3-0004
LEWIS H. THOMAS

T.M. 47-2-01-3-0005
CHRISTOPHER HOSMAN
D.B. 431, PG. 260
D.B. 215, PG. 51

T.M. 47-2-01-3-0002
SOMMER'S FAMILY TRUST
INSTR. # 010006249
INSTR. # 7340134

T.M. 47-2-01-3-0001
JOSEPH T. WEEKS
LOIS A. WEEKS
D.B. 310, PG. 151
P.B. 225, PG. 300

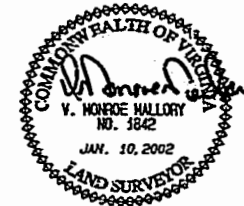
T.M. 47-2-01-0-0001B
JAMES CITY SERVICE
D.B. 205, PG. 655
D.B. 162, PG. 294

THIS SURVEY REPRESENTS THE PORTION OF
JOHN G. WARBURTON ESTATE KNOWN AS
"INDIGO POND".

- REFERENCES
- D.B. 20, PG. 267
 - D.B. 22, PG. 239
 - P.B. 3, PG. 34

SANITARY SEWER EASEMENT SHOWN HEREON
TAKEN FROM RECORD DEEDS AND PLATS AND
FROM INFORMATION PROVIDED BY JAMES CITY COUNTY.

City of Williamsburg & County of James City
Circuit Court: This PLAT was recorded on
5 February, 2002
at 2:36 P.M. P.B. 115 PG. 14
DOCUMENT # 020003469
BETSY B. WOOLRIDGE, CLERK
Betsy Woolridge, Sup. Clerk

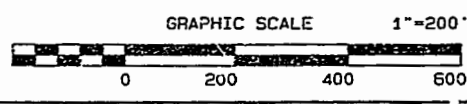


ALL LINES BY DEED DESCRIPTIONS, ADJOINING PLATS
AND FOUND PHYSICAL EVIDENCE AS NEAR AS POSSIBLE.

Dillard & Marion, P.C.
Land Surveyors
221 Queen Street, P.O. Box 1828
Tappahannock, Va. 22560
(804)443-3080, FAX(804)443-4550

DATE: JAN. 10, 2002	DISK: DGM # 453M	F.B.	J.N.
SCALE: 1" = 200'			JCP 5
DRAWN BY: V.M.M.	REVISIONS		
CHECKED BY: V.M.M.	47-2-01-0-0001		
SECT. NO.:	0001		

LINE	BEARING	DISTANCE
L1	S70°18'20"W	186.89'
L2	S76°00'57"W	92.29'
L3	N19°01'24"W	106.34'
L4	S70°58'36"W	100.66'
L5	S19°17'53"E	97.10'
L6	S73°05'41"W	79.71'



I certify that this perimeter survey is correct to the best of my knowledge and belief, subject to easements, servitudes, and covenants of record.

020003469

85 PAGE 14