

SURVEYOR'S CERTIFICATE

THE UNDERSIGNED, A LICENSED LAND SURVEYOR, DOES HEREBY CERTIFY THAT THIS PLAN IS ACCURATE AND COMPLIES WITH THE PROVISIONS OF VA. CODE ANN. SUBSECTIONS 55-79.58 A, C AND F. ALL UNITS DEPICTED HEREON ARE COMPLETED; IT BEING UNDERSTOOD THAT SUCH UNITS ARE BEING SUBJECTED TO A TIME-SHARE INSTRUMENT PURSUANT TO VA. CODE ANN. SECTION 55-387 AND THIS VA. CODE ANN. SUBSECTION 55-79.58 D APPLIES.

A. D. SEBERT, L.S. 4/11/01
DATE

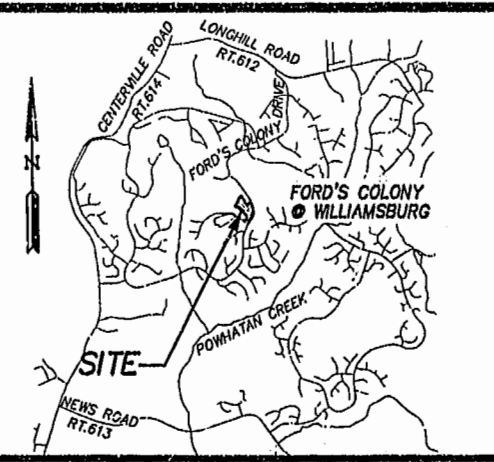
CE- COMMON ELEMENTS

COMMON ELEMENTS INCLUDE ALL PORTIONS OF THE CONDOMINIUM OTHER THAN THE UNITS SHOWN AND DESIGNATED HEREON AND DEFINED IN THE CONDOMINIUM DOCUMENTS AND THE LIMITED COMMON ELEMENTS. EXAMPLES OF COMMON ELEMENTS ARE: PARKING, PAVED AREAS, THE GROUNDS (WHETHER OR NOT LANDSCAPED), ALL PORTIONS OF THE BUILDINGS NOT A PART OF THE UNIT NOR DEFINED AS LIMITED COMMON ELEMENTS, AND ALL CONDUITS, INSTALLATIONS, WIRES, PIPES, EQUIPMENT, ETC. WHICH SERVE OTHER COMMON ELEMENTS OR WHICH SERVE MORE THAN ONE UNIT.

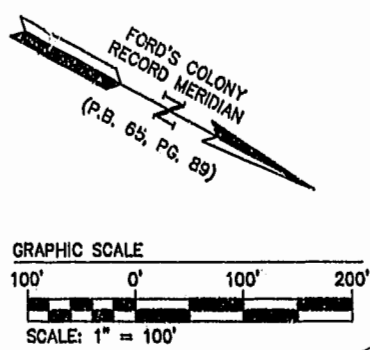
LCE- LIMITED COMMON ELEMENTS

EXCEPT AS MAY BE OTHERWISE EXPRESSLY PROVIDED, LIMITED COMMON ELEMENTS INCLUDE DOORS, WINDOWS, PORCHES, BALCONIES, AND ANY OTHER APPARATUS DESIGNED TO SERVE A SINGLE UNIT, BUT LOCATED OUTSIDE THE BOUNDARIES THEREOF.

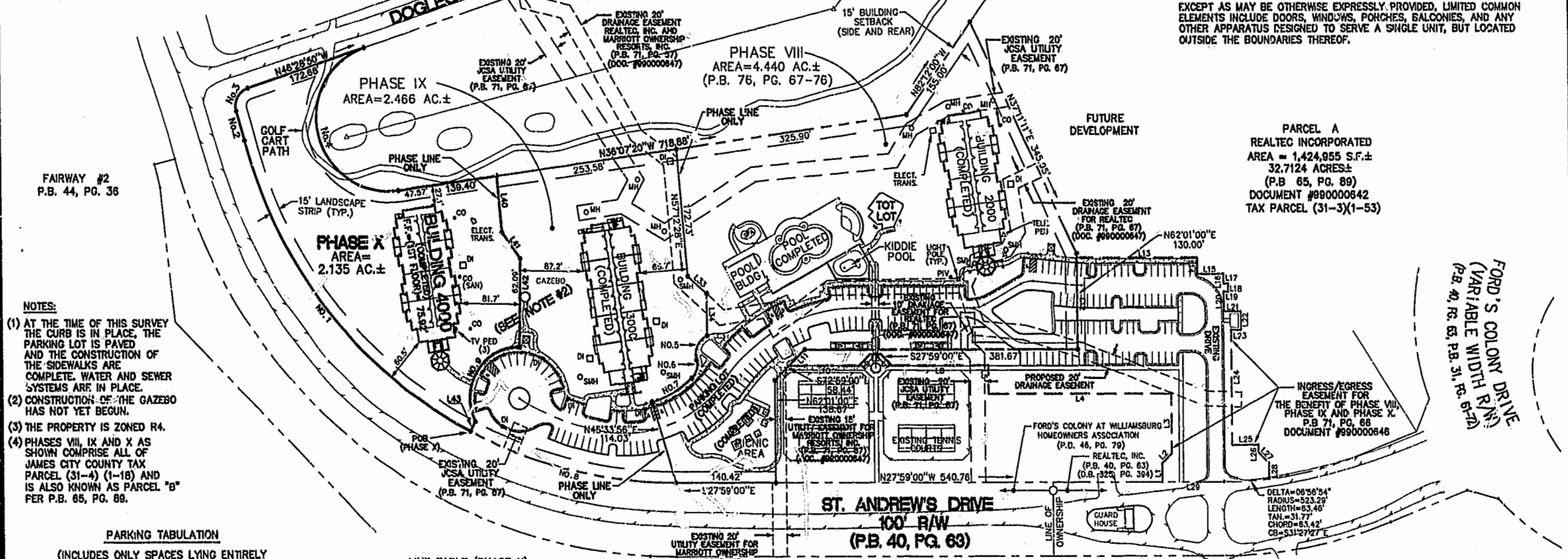
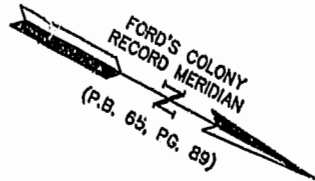
PARCEL A
REALTEC INCORPORATED
AREA = 1,424,955 S.F.±
32.7124 ACRES±
(P.B. 65, PG. 89)
DOCUMENT #990000642
TAX PARCEL (31-3)(1-53)



LOCATION MAP 1" = 4000'



THE LINKS I & II
P.B. 43, PG. 8-11
P.B. 43, PG. 13-16



- NOTES:**
- (1) AT THE TIME OF THIS SURVEY THE CURB IS IN PLACE, THE PARKING LOT IS PAVED AND THE CONSTRUCTION OF THE SIDEWALKS ARE COMPLETE. WATER AND SEWER SYSTEMS ARE IN PLACE.
 - (2) CONSTRUCTION OF THE GAZEBO HAS NOT YET BEGUN.
 - (3) THE PROPERTY IS ZONED R4.
 - (4) PHASES VIII, IX AND X AS SHOWN COMPRISE ALL OF JAMES CITY COUNTY TAX PARCEL (31-4) (1-18) AND IS ALSO KNOWN AS PARCEL "B" FER P.B. 65, PG. 89.

PARKING TABULATION
(INCLUDES ONLY SPACES LYING ENTIRELY ON PHASE VII, IX AND X)

PHASE VIII	83 SPACES (INCLUDING 4 HANDICAPPED)
PHASE IX	34 SPACES (INCLUDING 2 HANDICAPPED)
TOTAL	117 SPACES (INCLUDING 6 HANDICAPPED)

LINE TABLE (PHASE X)

NUMBER	BEARING	DISTANCE
L40	N87°12'28"E	78.91'
L41	N20°09'40"E	43.28'
L42	N82°55'24"E	120.20'
L43	N89°38'58"E	15.00'

CURVE TABLE PHASE X

NUMBER	DELTA	RADIUS	LENGTH	TANGENT	CHORD	CH. BEAR
No.1	48°02'04"	618.23	518.30	276.48	503.25	S23°37'58"W
No.2	01°53'57"	1250.00	41.43	20.72	41.43	S48°42'03"W
No.3	87°48'06"	25.00	38.30	24.05	34.68	S89°38'05"W
No.4	169°38'33"	100.00	298.08	1103.35	199.18	N48°41'58"E
No.9	117°32'19"	69.50	142.67	114.62	118.86	S85°50'40"E

LINE TABLE (PHASE IX)

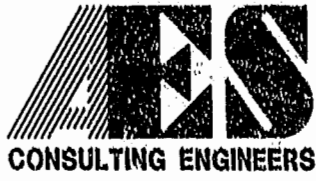
NUMBER	BEARING	DISTANCE
L33	N14°17'32"E	35.00'
L34	N61°50'00"E	57.22'

CURVE TABLE (PHASE IX)

NUMBER	DELTA	RADIUS	LENGTH	TANGENT	CHORD	CH BEAR
No.5	79°48'33"	28.00	39.00	23.42	35.92	N86°18'10"E
No.6	62°21'24"	25.00	27.21	15.13	25.89	N°7'34'36"E
No.7	26°48'09"	139.37	65.19	33.21	64.60	S57°50'07"E
No.8	27°35'58"	618.23	297.79	151.85	294.93	S14°11'02"E

LINE TABLE FOR ACCESS EASEMENT (DOCUMENT #990000648)

NUMBER	BEARING	DISTANCE
L1	S62°01'00"W	25.36'
L2	S172°59'00"W	18.92'
L3	S62°01'00"W	81.26'
L4	S27°59'00"E	256.13'
L5	S82°01'00"W	38.50'
L6	S27°59'00"E	134.21'
L7	S17°01'00"W	21.53'
L8	S27°59'00"E	15.00'
L9	S27°59'00"E	21.53'
L10	S27°59'00"E	98.52'
L11	N122°59'00"W	30.40'
L12	S62°01'00"W	124.18'
L13	N27°59'00"W	169.56'
L14	N62°01'00"E	22.18'
L15	N27°59'00"W	35.44'
L16	N82°01'00"E	13.24'
L17	N27°59'00"W	6.66'
L18	N82°01'00"E	11.00'
L19	S27°59'00"E	6.66'
L20	N62°01'00"E	26.54'
L21	N27°59'00"W	24.00'
L22	N82°01'00"E	25.00'
L23	S27°59'00"E	14.00'
L24	N82°01'00"E	155.93'
L25	N27°59'00"W	38.64'
L26	N82°01'00"E	10.66'
L27	N17°01'00"E	21.02'
L28	N82°01'00"E	21.52'
L29	S27°59'00"E	86.44'



5248 Olde Towne Road, Suite 1
Williamsburg, Virginia 23188
(757) 253-0040
Fax (757) 220-8994

EXHIBIT A-2
PLAT OF CONDOMINIUM MANOR CLUB AT FORD'S COLONY PHASE X
OWNER/DEVELOPER: MARRIOTT OWNERSHIP RESORTS, INC.
POWHATAN DISTRICT JAMES CITY COUNTY VIRGINIA

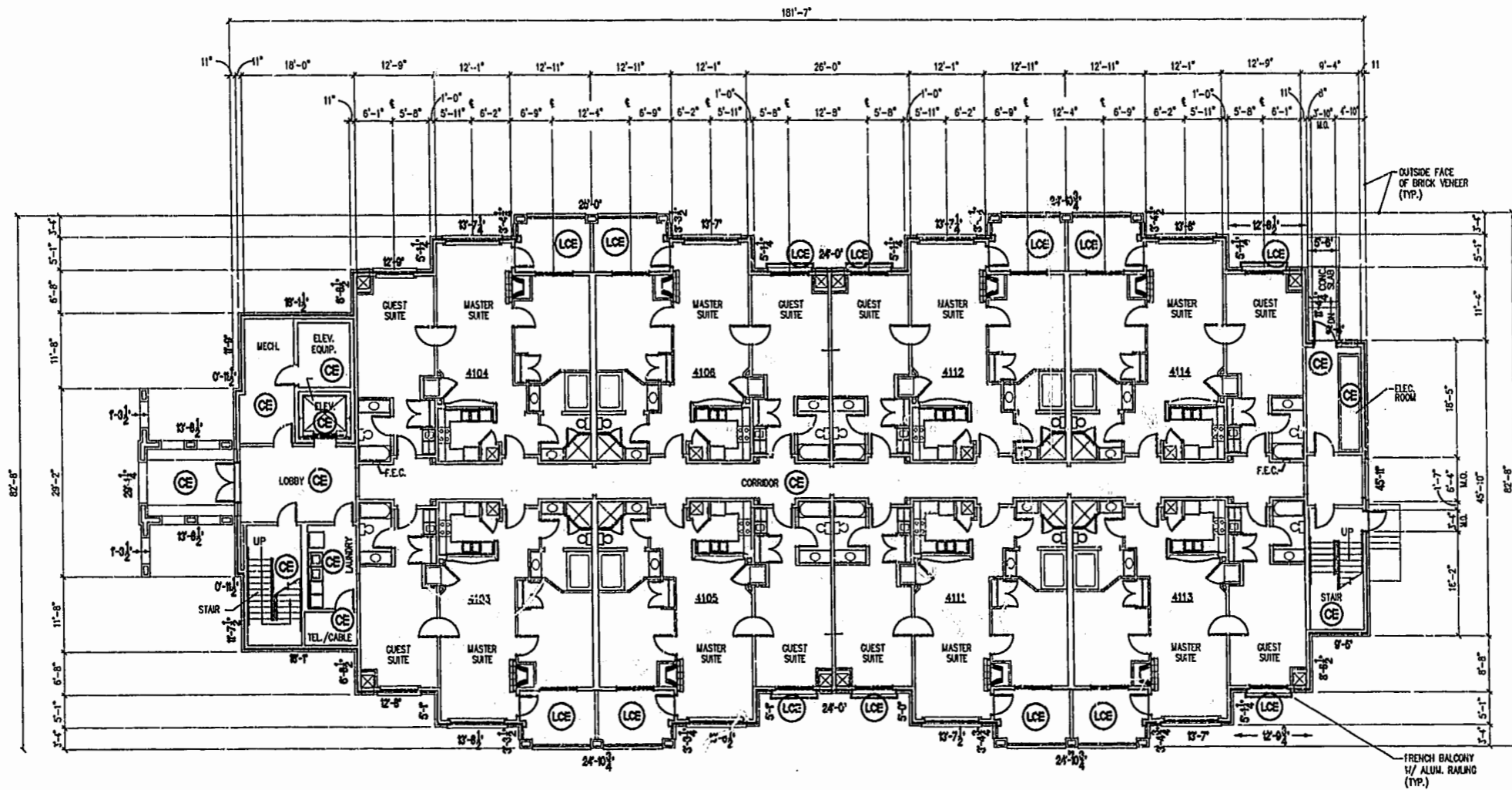


No.	DATE	REVISION / COMMENT / NOTE	BY

Designed	ADS	Drawn	JFS
Scale	1"=100'	Date	4/11/01
Project No.	7739-11	Drawing No.	1 OF 10

NOTE:
BOLD DIMENSIONS ARE BASED UPON ACTUAL FIELD MEASUREMENTS TAKEN AT OUTSIDE FACE OF BRICK. OTHER BUILDING DIMENSIONS AND DETAILS SHOWN ARE PER PLANS BY CMSS ARCHITECTS, P.C..

CE COMMON ELEMENT
LCE LIMITED COMMON ELEMENT



FIRST FLOOR PLAN
(NOT TO SCALE)

NOTES:

1. THE LOWER (HORIZONTAL) BOUNDARY OF EACH UNIT IN BUILDING 4000 SHOWN ON THE PLAT AS LOCATED ON PHASE X IS THE HORIZONTAL PLANE OF THE UPPER SURFACE OF THE FLOOR SLAB OR CONCRETE FLOOR TOPPING OF THE UNIT.
 2. THE UPPER (HORIZONTAL) BOUNDARY OF EACH OF THE UNITS IN BUILDING 4000 SHOWN ON THE PLAT AS LOCATED ON PHASE X IS THE HORIZONTAL PLANE(S) OF THE LOWER SURFACE OF THE FLOOR JOISTS (OR, IN THE CASE OF THIRD FLOOR UNITS, THE LOWER SURFACE OF THE BOTTOM CHORD OF THE ROOF TRUSSES) CONSTITUTING A PART OF THE CEILING OF THE UNIT.
- * SEE TWELFTH AMENDMENT TO DECLARATION OF CONDOMINIUM OF MANOR CLUB AT FORD'S COLONY, A CONDOMINIUM (PHASE X CONDOMINIUM AGREEMENT) FOR A MORE DETAILED DESCRIPTION.

CERTIFICATION FOR PLANS

"THE UNDERSIGNED, A LICENSED LAND SURVEYOR, DOES HEREBY CERTIFY THAT THESE PLANS ARE IN COMPLIANCE WITH VA. CODE ANN. SUBSECTIONS 55-79.58 B AND F. IT BEING UNDERSTOOD THAT SUCH UNITS ARE BEING SUBJECTED TO A TIME-SHARE INSTRUMENT PURSUANT TO VA. CODE ANN. SECTION 55-367 AND THUS VA. CODE ANN. SUBSECTION 55-79.58 D APPLIES. I FURTHER CERTIFY THAT ALL UNITS OR PORTIONS THEREOF DEPICTED HEREON HAVE BEEN SUBSTANTIALLY COMPLETED."



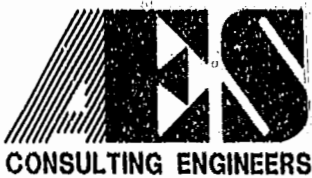
A.D. Sebert
A. D. SEBERT, L.S.

4/11/01
DATE

EXHIBIT A-3

PLAT OF CONDOMINIUM
MANOR CLUB
AT FORD'S COLONY
PHASE X

OWNER/DEVELOPER: MARRIOTT OWNERSHIP RESORTS, INC.
POWHATAN DISTRICT JAMES CITY COUNTY VIRGINIA



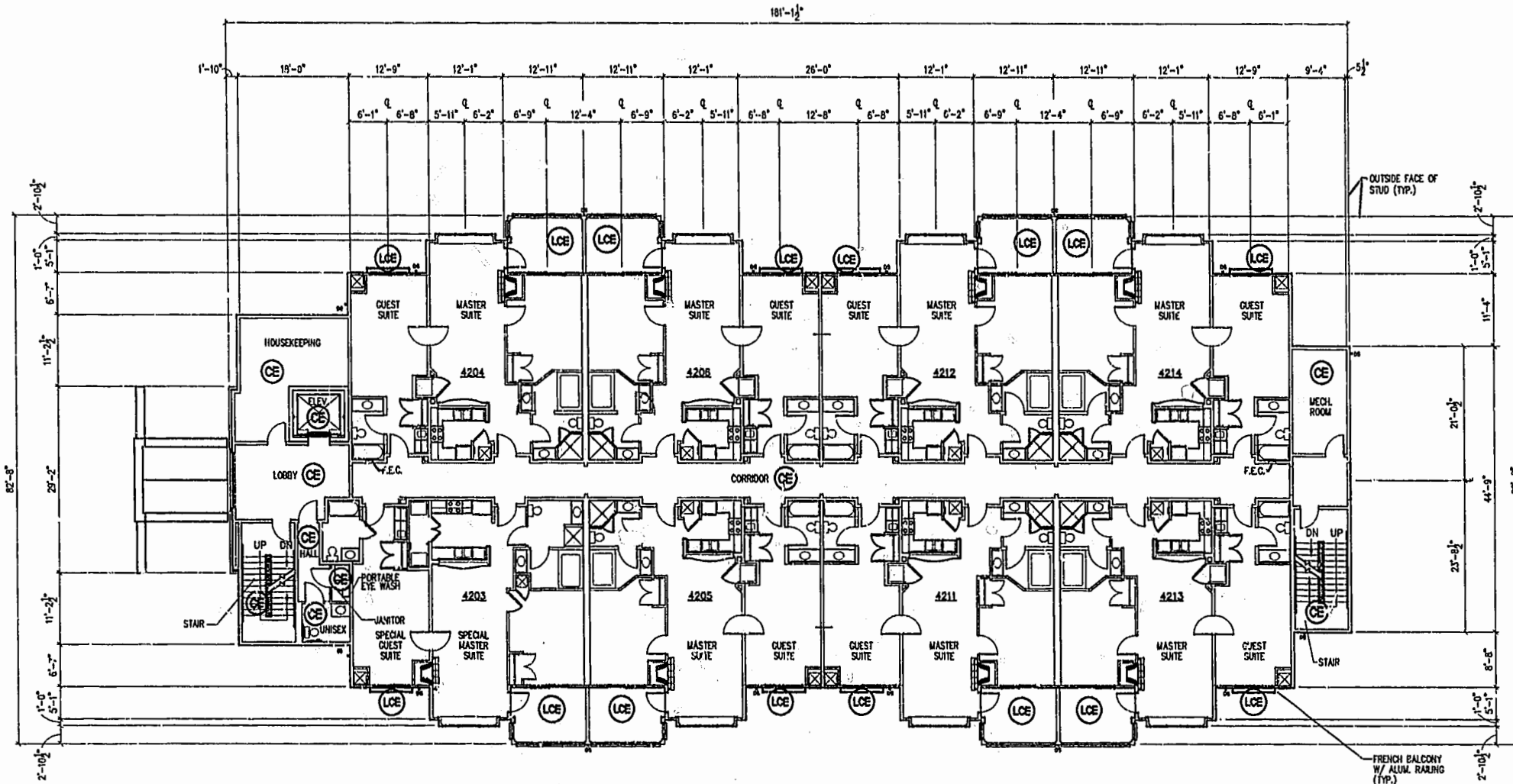
5248 Olde Towne Road, Suite 1
Williamsburg, Virginia 23188
(757) 253-0040
Fax (757) 220-8994

	City of Williamsburg & County of James City Circuit Court. This PLAT was recorded on 30 Nov 2002 at 10:48 AM/PM, PB. 85, PG 4-13. DOCUMENT # 02.0002823 Betsy B. Woolridge, Clerk	
No.	DATE	REVISION / COMMENT / NOTE
		BY

Designed ADS	Drawn JFS
Scale NOTED	Date 4/11/01
Project No. 7739-11	
Drawing No. 2 OF 10	

NOTE:
BOLD DIMENSIONS ARE BASED UPON ACTUAL FIELD MEASUREMENTS TAKEN AT OUTSIDE FACE OF BRICK. OTHER BUILDING DIMENSIONS AND DETAILS SHOWN ARE PER PLANS BY CMSS ARCHITECTS, P.C..

CE COMMON ELEMENT
LCE LIMITED COMMON ELEMENT



SECOND FLOOR PLAN
(NOT TO SCALE)

NOTES: *

- THE LOWER (HORIZONTAL) BOUNDARY OF EACH UNIT IN BUILDING 4000 SHOWN ON THE PLAT AS LOCATED ON PHASE X IS THE HORIZONTAL PLANE OF THE UPPER SURFACE OF THE FLOOR SLAB OR CONCRETE FLOOR TOPPING OF THE UNIT.
 - THE UPPER (HORIZONTAL) BOUNDARY OF EACH OF THE UNITS IN BUILDING 4000 SHOWN ON THE PLAT AS LOCATED ON PHASE X IS THE HORIZONTAL PLANE(S) OF THE LOWER SURFACE OF THE FLOOR JOISTS (OR, IN THE CASE OF THIRD FLOOR UNITS, THE LOWER SURFACE OF THE BOTTOM CHORD OF THE ROOF TRUSSES) CONSTITUTING A PART OF THE CEILING OF THE UNIT.
- * SEE TWELFTH AMENDMENT TO DECLARATION OF CONDOMINIUM OF MANOR CLUB AT FORD'S COLONY, A CONDOMINIUM (PHASE X CONDOMINIUM AGREEMENT) FOR A MORE DETAILED DESCRIPTION.

CERTIFICATION FOR PLANS

"THE UNDERSIGNED, A LICENSED LAND SURVEYOR, DOES HEREBY CERTIFY THAT THESE PLANS ARE IN COMPLIANCE WITH VA. CODE ANN. SUBSECTIONS 55-79.58 B AND F. IT BEING UNDERSTOOD THAT SUCH UNITS ARE BEING SUBJECTED TO A TIME-SHARE INSTRUMENT PURSUANT TO VA. CODE ANN. SECTION 55-367 AND THUS VA. CODE ANN. SUBSECTION 55-79.58 D APPLIES. I FURTHER CERTIFY THAT ALL UNITS OR PORTIONS THEREOF DEPICTED HEREON HAVE BEEN SUBSTANTIALLY COMPLETED."

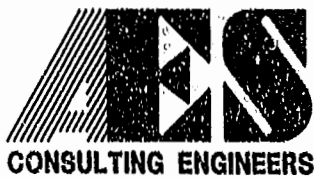


A.D. Sebert
A. D. SEBERT, L.S. 4/11/01
DATE

EXHIBIT A-3

PLAT OF CONDOMINIUM
MANOR CLUB
AT FORD'S COLONY
PHASE X

OWNER/DEVELOPER: MARRIOTT OWNERSHIP RESORTS, INC.
POWHATAN DISTRICT JAMES CITY COUNTY VIRGINIA



5248 Olde Towne Road, Suite 1
Williamsburg, Virginia 23188
(757) 253-0040
Fax (757) 220-8994

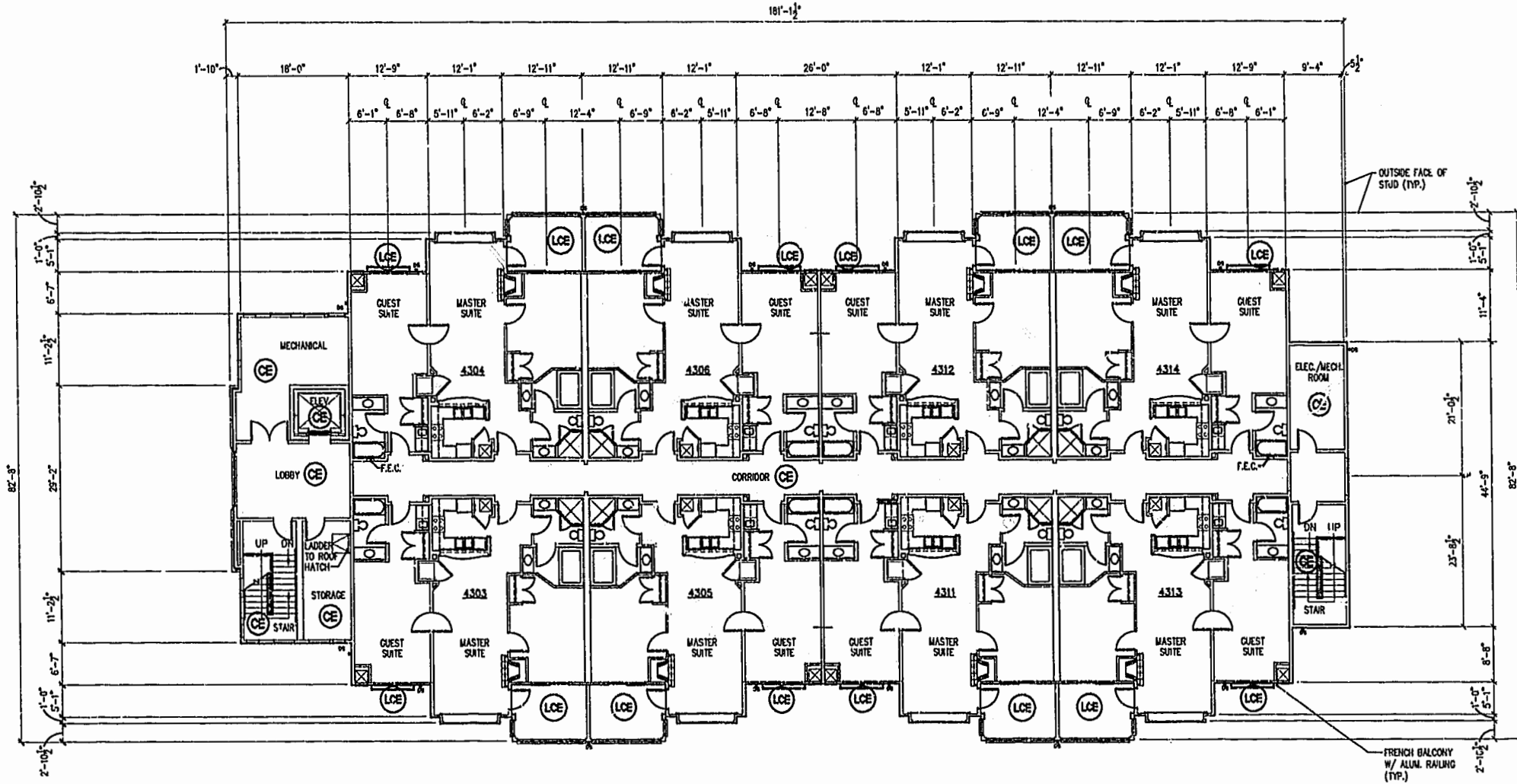
No.	DATE	REVISION / COMMENT / NOTE	BY
		City of Williamsburg & County of James City Circuit Court: This PLAT was recorded on 30 Jan 2002 at 10:48 AM, PB. 85, PG 4-13. DOCUMENT # 020002823. BETSY B. WOOLRIDGE, CLERK. <i>Betsy Woolridge</i> , Dep. Clerk	

Designed ADS	Drawn JFS
Scale	Date
NOTED	4/11/01
Project No. 7739-11	
Drawing No. 3 OF 10	

04:17:01:16:51 MCPXP03R.DWG JFS

NOTE:
 BOLD DIMENSIONS ARE BASED UPON ACTUAL FIELD MEASUREMENTS TAKEN AT OUTSIDE FACE OF BRICK. OTHER BUILDING DIMENSIONS AND DETAILS SHOWN ARE PER PLANS BY CMSS ARCHITECTS, P.C..

⊙ COMMON ELEMENT
 ⊙ LIMITED COMMON ELEMENT



THIRD FLOOR PLAN
 (NOT TO SCALE)

- NOTES: *
1. THE LOWER (HORIZONTAL) BOUNDARY OF EACH UNIT IN BUILDING 4000 SHOWN ON THE PLAT AS LOCATED ON PHASE X IS THE HORIZONTAL PLANE OF THE UPPER SURFACE OF THE FLOOR SLAB OR CONCRETE FLOOR TOPPING OF THE UNIT.
 2. THE UPPER (HORIZONTAL) BOUNDARY OF EACH OF THE UNITS IN BUILDING 4000 SHOWN ON THE PLAT AS LOCATED ON PHASE X IS THE HORIZONTAL PLANE(S) OF THE LOWER SURFACE OF THE FLOOR JOISTS (OR, IN THE CASE OF THIRD FLOOR UNITS, THE LOWER SURFACE OF THE BOTTOM CHORD OF THE ROOF TRUSSES) CONSTITUTING A PART OF THE CEILING OF THE UNIT.
- * SEE TWELFTH AMENDMENT TO DECLARATION OF CONDOMINIUM OF MANOR CLUB AT FORD'S COLONY, A CONDOMINIUM (PHASE X CONDOMINIUM AGREEMENT) FOR A MORE DETAILED DESCRIPTION.

CERTIFICATION FOR PLANS
 "THE UNDERSIGNED, A LICENSED LAND SURVEYOR, DOES HEREBY CERTIFY THAT THESE PLANS ARE IN COMPLIANCE WITH VA. CODE ANN. SUBSECTIONS 55-79.58 B AND F. IT BEING UNDERSTOOD THAT SUCH UNITS ARE BEING SUBJECTED TO A TIME-SHARE INSTRUMENT PURSUANT TO VA. CODE ANN. SECTION 55-367 AND THUS VA. CODE ANN. SUBSECTION 55-79.58 D APPLIES. I FURTHER CERTIFY THAT ALL UNITS OR PORTIONS THEREOF DEPICTED HEREON HAVE BEEN SUBSTANTIALLY COMPLETED."



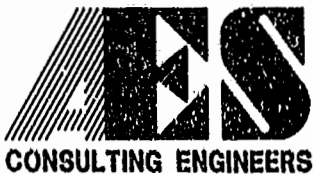
A.D. Sebert
 A. D. SEBERT, L.S.
 4/11/01
 DATE

04.17.01-10:52 MCPXP04R.DWG JFS

EXHIBIT A-3

**PLAT OF CONDOMINIUM
 MANOR CLUB
 AT FORD'S COLONY
 PHASE X**

OWNER/DEVELOPER: MARRIOTT OWNERSHIP RESCPTS, INC.
 POWHATAN DISTRICT JAMES CITY COUNTY VIRGINIA



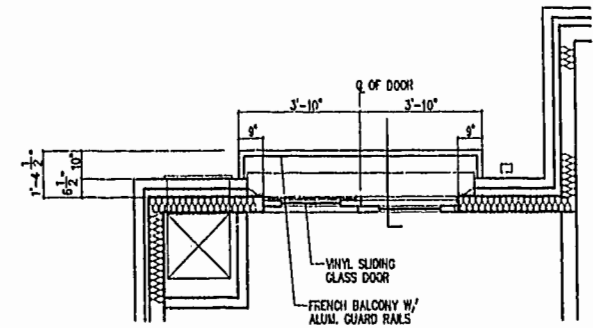
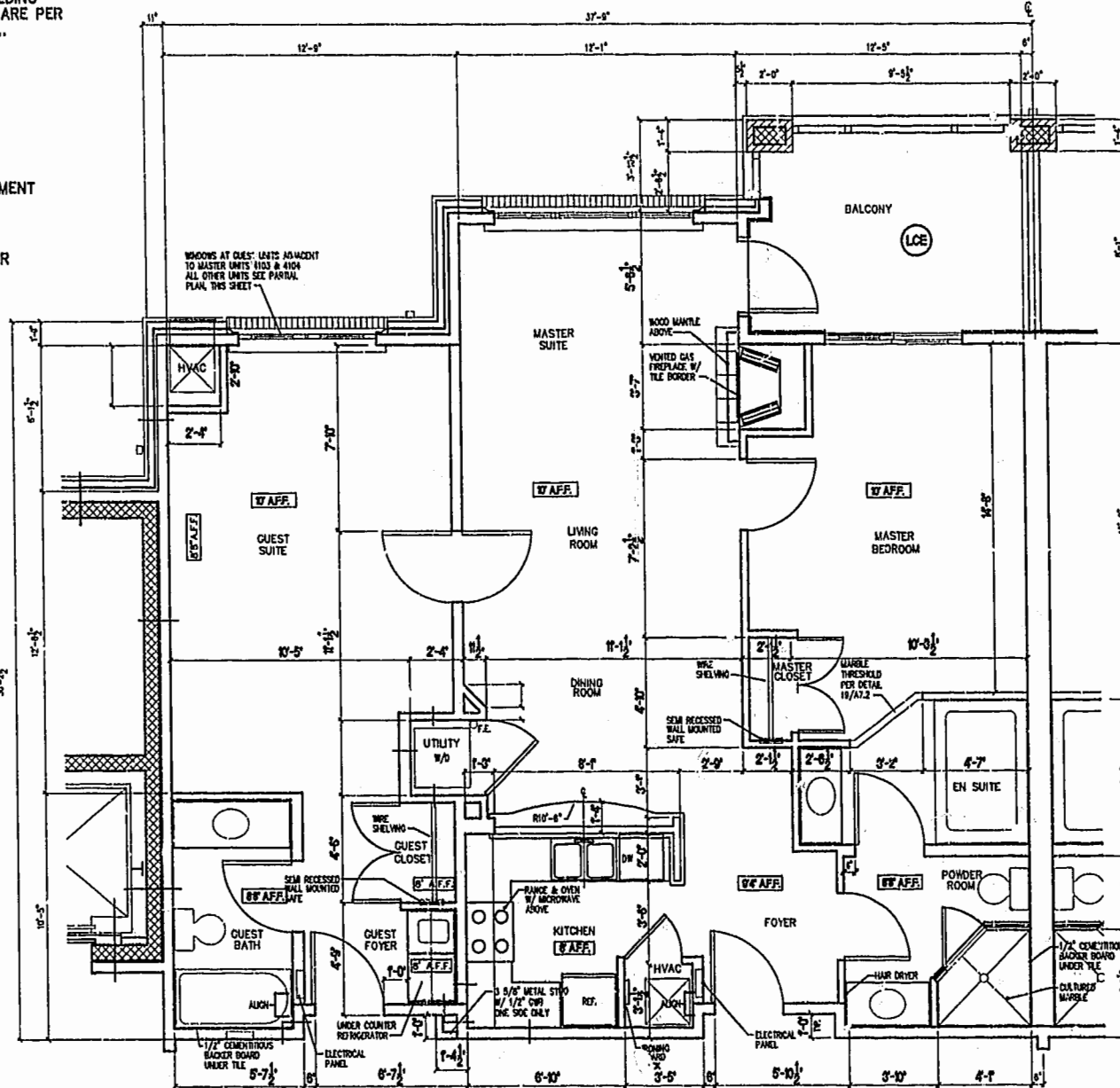
5248 Olde Towne Road, Suite 1
 Williamsburg, Virginia 23188
 (757) 253-0040
 Fax (757) 220-8994

No.	DATE	REVISION / COMMENT / NOTE	BY
		City of Williamsburg & County of James City Circuit Court: This PLAT was recorded on 31 Jan 2002 at 10:48 AM/PM. PB. 85 PG. 4-13 DOCUMENT # 020002823 BETSY B. WOOLRIDGE, CLERK	

Designed	Drawn
ADS	JFS
Scale	Date
NOTED	4/11/01
Project No.	7739-11
Drawing No.	4 OF 10

NOTE:
BOLD DIMENSIONS ARE BASED UPON ACTUAL
FIELD MEASUREMENTS. OTHER BUILDING
DIMENSIONS AND DETAILS SHOWN ARE PER
PLANS BY CMSS ARCHITECTS, P.C..

- (CE)** COMMON ELEMENT
- (LCE)** LIMITED COMMON ELEMENT
- A.F.F.** ABOVE FINISH FLOOR



PARTIAL FLOOR PLAN - GUEST PLAN

NOTE: TYP. AT ALL UNITS EXCEPT
WINDOWS AT GUEST UNITS ADJACENT
TO MASTER UNITS 4103 & 4104

FIRST FLOOR UNIT PLAN

UNIT NO.	ORIENTATION
4103	MIRRORED
4104 (TYPICAL)	SAME
4105	SAME
4106	MIRRORED
4111	MIRRORED
4112	SAME
4113	SAME
4114	MIRRORED



TYPICAL FIRST FLOOR UNIT PLAN
(NOT TO SCALE)

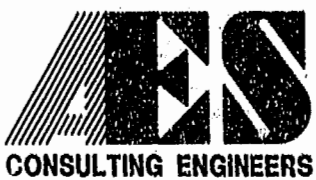
- NOTES:
- THE LOWER (HORIZONTAL) BOUNDARY OF EACH UNIT IN BUILDING 4000 SHOWN ON THE PLAT AS LOCATED ON PHASE X IS THE HORIZONTAL PLANE OF THE UPPER SURFACE OF THE FLOOR SLAB OR CONCRETE FLOOR TOPPING OF THE UNIT.
 - THE UPPER (HORIZONTAL) BOUNDARY OF EACH OF THE UNITS IN BUILDING 4000 SHOWN ON THE PLAT AS LOCATED ON PHASE X IS THE HORIZONTAL PLANE(S) OF THE LOWER SURFACE OF THE FLOOR JOISTS (OR, IN THE CASE OF THIRD FLOOR UNITS, THE LOWER SURFACE OF THE BOTTOM CHORD OF THE ROOF TRUSSES) CONSTITUTING A PART OF THE CEILING OF THE UNIT.
- * SEE TWELFTH AMENDMENT TO DECLARATION OF CONDOMINIUM OF MANOR CLUB AT FORD'S COLONY, A CONDOMINIUM (PHASE X CONDOMINIUM AGREEMENT) FOR A MORE DETAILED DESCRIPTION.

CERTIFICATION FOR PLANS

"THE UNDERSIGNED, A LICENSED LAND SURVEYOR, DOES HEREBY CERTIFY THAT THESE PLANS ARE IN COMPLIANCE WITH VA. CODE ANN. SUBSECTIONS 55-79.58 B AND F. IT BEING UNDERSTOOD THAT SUCH UNITS ARE BEING SUBJECTED TO A TIME-SHARE INSTRUMENT PURSUANT TO VA. CODE ANN. SECTION 55-367 AND THUS VA. CODE ANN. SUBSECTION 55-79.58 D APPLIES. I FURTHER CERTIFY THAT ALL UNITS OR PORTIONS THEREOF DEPICTED HEREON HAVE BEEN SUBSTANTIALLY COMPLETED."

A.D. Sebert 4/11/01
A. D. SEBERT, L.S. DATE

MCPXP05R.DWG 04.17.01-10:53 JFS



5248 Olde Towne Road, Suite 1
Williamsburg, Virginia 23188
(757) 253-0040
Fax (757) 220-8994

EXHIBIT A-3

PLAT OF CONDOMINIUM
MANOR CLUB
AT FORD'S COLONY
PHASE X

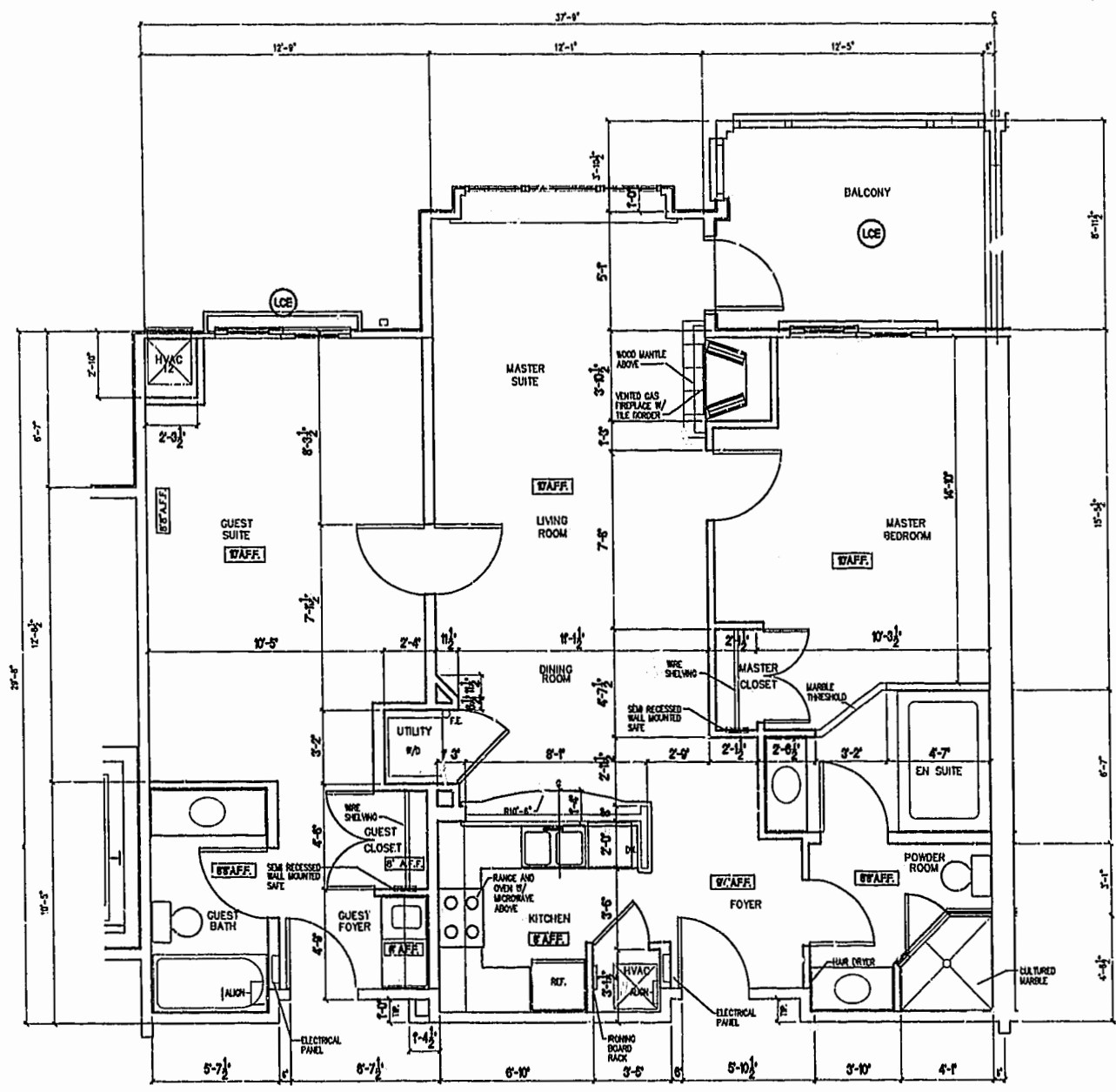
OWNER/DEVELOPER: MARRIOTT OWNERSHIP RESORTS, INC.
POWhatan DISTRICT JAMES CITY COUNTY VIRGINIA

No.	DATE	REVISION / COMMENT / NOTE	BY

City of Williamsburg & County of James City Circuit Court: This PLAT was recorded on at 10:48 AM on 20 Jan 2002 DOCUMENT # 020002823 BETSY B. WOOLRIDGE, CLERK	Designed ADS	Drawn JFS
	Scale NOTED	Date 4/11/01
	Project No. 7739-11	
	Drawing No. 5 OF 10	

NOTE:
BOLD DIMENSIONS ARE BASED UPON ACTUAL
FIELD MEASUREMENTS. OTHER BUILDING
DIMENSIONS AND DETAILS SHOWN ARE PER
PLANS BY CMSS ARCHITECTS, P.C.

- (CE)** COMMON ELEMENT
- (LCE)** LIMITED COMMON ELEMENT
- A.F.F.** ABOVE FINISH FLOOR



SECOND FLOOR UNIT PLAN

UNIT NO.	ORIENTATION
4204 (TYPICAL)	SAME
4205	SAME
4206	MIRRORED
4211	MIRRORED
4212	SAME
4213	SAME
4214	MIRRORED

THIRD FLOOR UNIT PLAN

UNIT NO.	ORIENTATION
4303	MIRRORED
4304 (TYPICAL)	SAME
4305	SAME
4306	MIRRORED
4311	MIRRORED
4312	SAME
4313	SAME
4314	MIRRORED

TYPICAL SECOND AND THIRD FLOOR UNIT PLAN
(NOT TO SCALE)

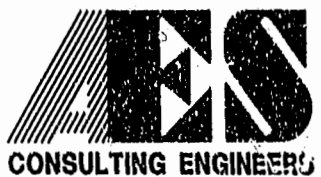
- NOTES: *
- THE LOWER (HORIZONTAL) BOUNDARY OF EACH UNIT IN BUILDING 4000 SHOWN ON THE PLAT AS LOCATED ON PHASE X IS THE HORIZONTAL PLANE OF THE UPPER SURFACE OF THE FLOOR SLAB OR CONCRETE FLOOR TOPPING OF THE UNIT.
 - THE UPPER (HORIZONTAL) BOUNDARY OF EACH OF THE UNITS IN BUILDING 4000 SHOWN ON THE PLAT AS LOCATED ON PHASE X IS THE HORIZONTAL PLANE(S) OF THE LOWER SURFACE OF THE FLOOR JOISTS (OR, IN THE CASE OF THIRD FLOOR UNITS, THE LOWER SURFACE OF THE BOTTOM CHORD OF THE ROOF TRUSSES) CONSTITUTING A PART OF THE CEILING OF THE UNIT.
 - SEE TWELFTH AMENDMENT TO DECLARATION OF CONDOMINIUM OF MANOR CLUB AT FORD'S COLONY, A CONDOMINIUM (PHASE X CONDOMINIUM AGREEMENT) FOR A MORE DETAILED DESCRIPTION.



CERTIFICATION FOR PLANS
 "THE UNDERSIGNED, A LICENSED LAND SURVEYOR, DOES HEREBY CERTIFY THAT THESE PLANS ARE IN COMPLIANCE WITH VA. CODE ANN. SUBSECTIONS 55-79.58 B AND F. IT BEING UNDERSTOOD THAT SUCH UNITS ARE BEING SUBJECTED TO A TIME-SHARE INSTRUMENT PURSUANT TO VA. CODE ANN. SECTION 55-367 AND THUS VA. CODE ANN. SUBSECTION 55-79.58 D APPLIES. I FURTHER CERTIFY THAT ALL UNITS OR PORTIONS THEREOF DEPICTED HEREON HAVE BEEN SUBSTANTIALLY COMPLETED."

A.D. Seberty
 A. D. SEBERT, L.S. 4/11/01
 DATE

MCPXP06R.DWG
04.17.01-10:54
JFS



5248 Olde Towne Road, Suite 1
 Williamsburg, Virginia 23188
 (757) 253-0040
 Fax (757) 220-8994

EXHIBIT A-3

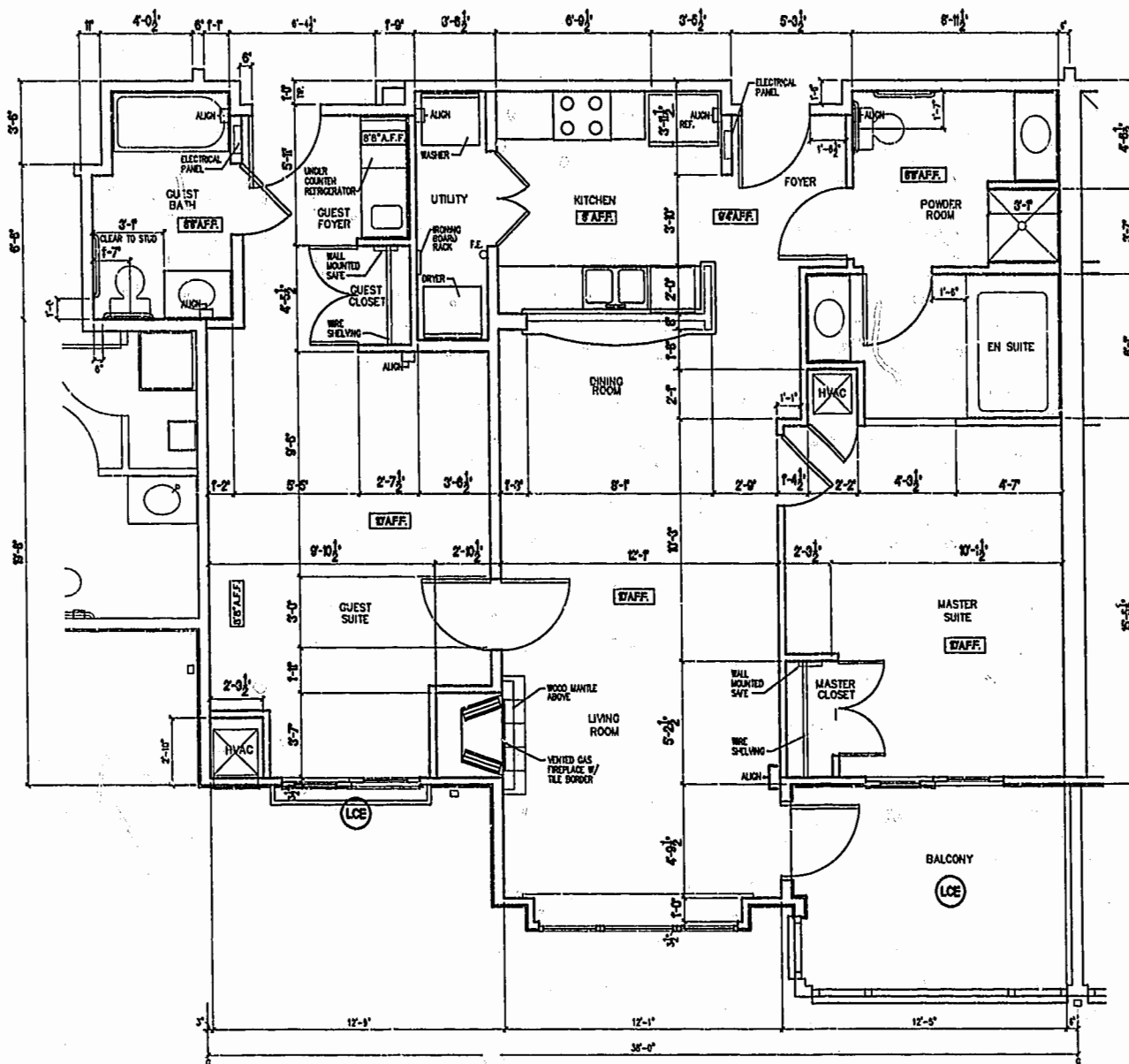
PLAT OF CONDOMINIUM
 MANOR CLUB
 AT FORD'S COLONY
 PHASE X

OWNER/DEVELOPER: MARRIOTT OWNERSHIP RESORTS, INC.
 POWHATAN DISTRICT JAMES CITY COUNTY VIRGINIA

No.	DATE	REVISION / COMMENT / NOTE	BY

Designed ADS	Drawn JFS
Scale NOTED	Date 4/11/01
Project No. 7739-11	
Drawing No. 6 OF 10	

NOTE:
 30LD DIMENSIONS ARE BASED UPON ACTUAL
 FIELD MEASUREMENTS. OTHER BUILDING
 DIMENSIONS AND DETAILS SHOWN ARE PER
 PLANS BY CMSS ARCHITECTS, P.C..



⊙ CE COMMON ELEMENT
 ⊙ LCE LIMITED COMMON ELEMENT
 A.F.F. ABOVE FINISH FLOOR

SPECIAL UNIT FLOOR PLAN

UNIT NO.
 4203



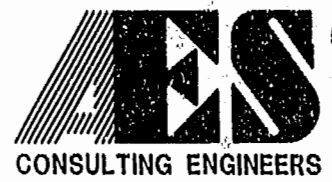
⊙ SPECIAL UNIT PLAN
 (NOT TO SCALE)

- NOTES:
1. THE LOWER (HORIZONTAL) BOUNDARY OF EACH UNIT IN BUILDING 4000 SHOWN ON THE PLAT AS LOCATED ON PHASE X IS THE HORIZONTAL PLANE OF THE UPPER SURFACE OF THE FLOOR SLAB OR CONCRETE FLOOR TOPPING OF THE UNIT.
 2. THE UPPER (HORIZONTAL) BOUNDARY OF EACH OF THE UNITS IN BUILDING 4000 SHOWN ON THE PLAT AS LOCATED ON PHASE X IS THE HORIZONTAL PLANE(S) OF THE LOWER SURFACE OF THE FLOOR JOISTS (OR, IN THE CASE OF THIRD FLOOR UNITS, THE LOWER SURFACE OF THE BOTTOM CHORD OF THE ROOF TRUSSES) CONSTITUTING A PART OF THE CEILING OF THE UNIT.
- * SEE TWELFTH AMENDMENT TO DECLARATION OF CONDOMINIUM OF MANOR CLUB AT FORD'S COLONY, A CONDOMINIUM (PHASE X CONDOMINIUM AGREEMENT) FOR A MORE DETAILED DESCRIPTION.

CERTIFICATION FOR PLANS
 "THE UNDERSIGNED, A LICENSED LAND SURVEYOR, DOES HEREBY CERTIFY THAT THESE PLANS ARE IN COMPLIANCE WITH VA. CODE ANN. SUBSECTIONS 55-79.58 B AND F. IT BEING UNDERSTOOD THAT SUCH UNITS ARE BEING SUBJECTED TO A TIME-SHARE INSTRUMENT PURSUANT TO VA. CODE ANN. SECTION 55-367 AND THUS VA. CODE ANN. SUBSECTION 55-79.58 D APPLIES. I FURTHER CERTIFY THAT ALL UNITS OR PORTIONS THEREOF DEPICTED HEREON HAVE BEEN SUBSTANTIALLY COMPLETED."

A.D. Sebert
 A. D. SEBERT, L.S. 4/11/01
 DATE

MCPXPOTR.DWG 04.17.01-10:55 JFS



5248 Olde Towne Road, Suite 1
 Williamsburg, Virginia 23188
 (757) 253-0040
 Fax (757) 220-8994

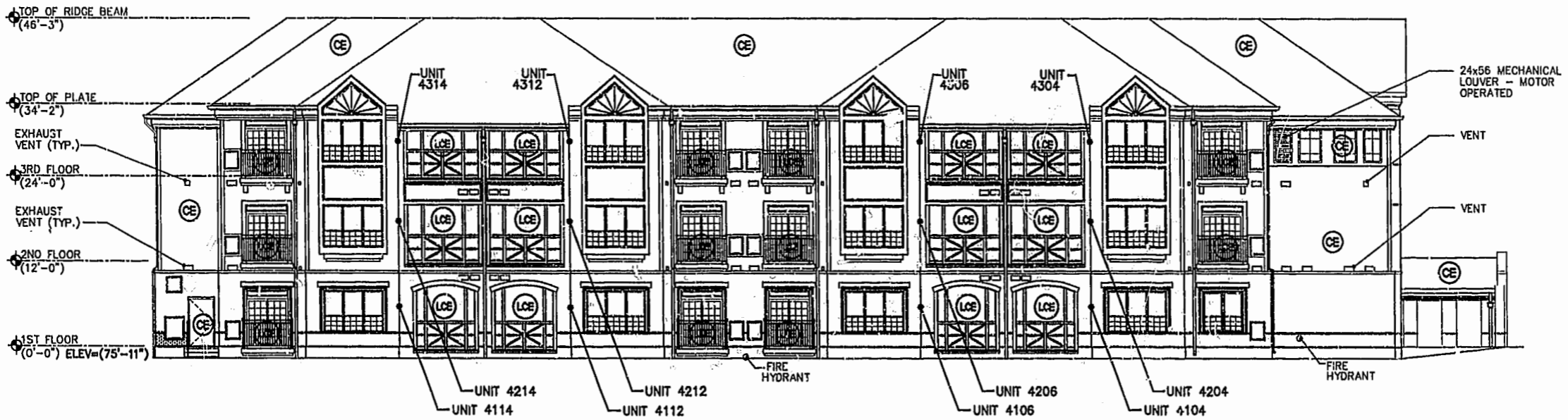
EXHIBIT A-3
**PLAT OF CONDOMINIUM
 MANOR CLUB
 AT FORD'S COLONY
 PHASE X**
 OWNER/DEVELOPER: MARRIOTT OWNERSHIP RESORTS, INC.
 POWHATAN DISTRICT JAMES CITY COUNTY VIRGINIA

No.	DATE	REVISION / COMMENT / NOTE	BY

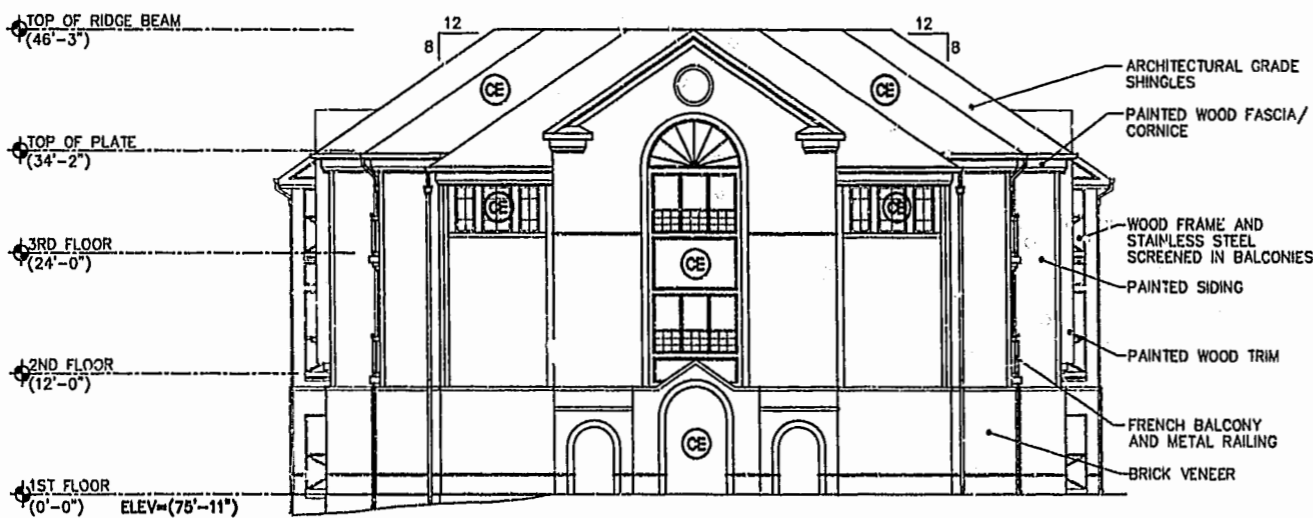
Designed ADS	Drawn JFS
Scale NOTED	Date 4/11/01
Project No. 7739-11	
Drawing No. 7 OF 10	

NOTE:
BOLD DIMENSIONS ARE BASED UPON ACTUAL
FIELD MEASUREMENTS. OTHER BUILDING
DIMENSIONS AND DETAILS SHOWN ARE PER
PLANS BY CMSS ARCHITECTS, P.C..

⊙ COMMON ELEMENT
⊙ LIMITED COMMON ELEMENT



LEFT SIDE BUILDING ELEVATION (NOT TO SCALE)



FRONT BUILDING ELEVATION (NOT TO SCALE)

NOTES:

1. THE LOWER (HORIZONTAL) BOUNDARY OF EACH UNIT IN BUILDING 4000 SHOWN ON THE PLAT AS LOCATED ON PHASE X IS THE HORIZONTAL PLANE OF THE UPPER SURFACE OF THE FLOOR SLAB OR CONCRETE FLOOR TOPPING OF THE UNIT.
2. THE UPPER (HORIZONTAL) BOUNDARY OF EACH OF THE UNITS IN BUILDING 4000 SHOWN ON THE PLAT AS LOCATED ON PHASE X IS THE HORIZONTAL PLANE(S) OF THE LOWER SURFACE OF THE FLOOR JOISTS (OR, IN THE CASE OF THIRD FLOOR UNITS, THE LOWER SURFACE OF THE BOTTOM CHORD OF THE ROOF TRUSSES) CONSTITUTING A PART OF THE CEILING OF THE UNIT.
 - SEE TWELFTH AMENDMENT TO DECLARATION OF CONDOMINIUM OF MANOR CLUB AT FORD'S COLONY, A CONDOMINIUM (PHASE X CONDOMINIUM AGREEMENT) FOR A MORE DETAILED DESCRIPTION.



CERTIFICATION FOR PLANS

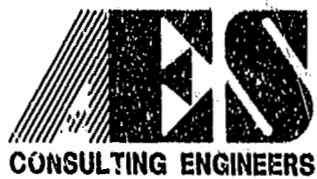
"THE UNDERSIGNED, A LICENSED LAND SURVEYOR, DOES HEREBY CERTIFY THAT THESE PLANS ARE IN COMPLIANCE WITH VA. CODE ANN. SUBSECTIONS 55-79.58 B AND F. IT BEING UNDERSTOOD THAT SUCH UNITS ARE BEING SUBJECTED TO A TIME-SHARE INSTRUMENT PURSUANT TO VA. CODE ANN. SECTION 55-367 AND THUS VA. CODE ANN. SUBSECTION 55-79.58 D APPLIES. I FURTHER CERTIFY THAT ALL UNITS OR PORTIONS THEREOF DEPICTED HEREON HAVE BEEN SUBSTANTIALLY COMPLETED."

A. D. Sebert 4/11/01
A. D. SEBERT, L.S. DATE

EXHIBIT A-3

PLAT OF CONDOMINIUM
MANOR CLUB
AT FORD'S COLONY
PHASE X

OWNER/DEVELOPER: MARRIOTT OWNERSHIP RESORTS, INC.
POWhatan DISTRICT JAMES CITY COUNTY VIRGINIA



5248 Olde Towne Road, Suite 1
Williamsburg, Virginia 23188
(757) 253-0040
Fax (757) 220-8994

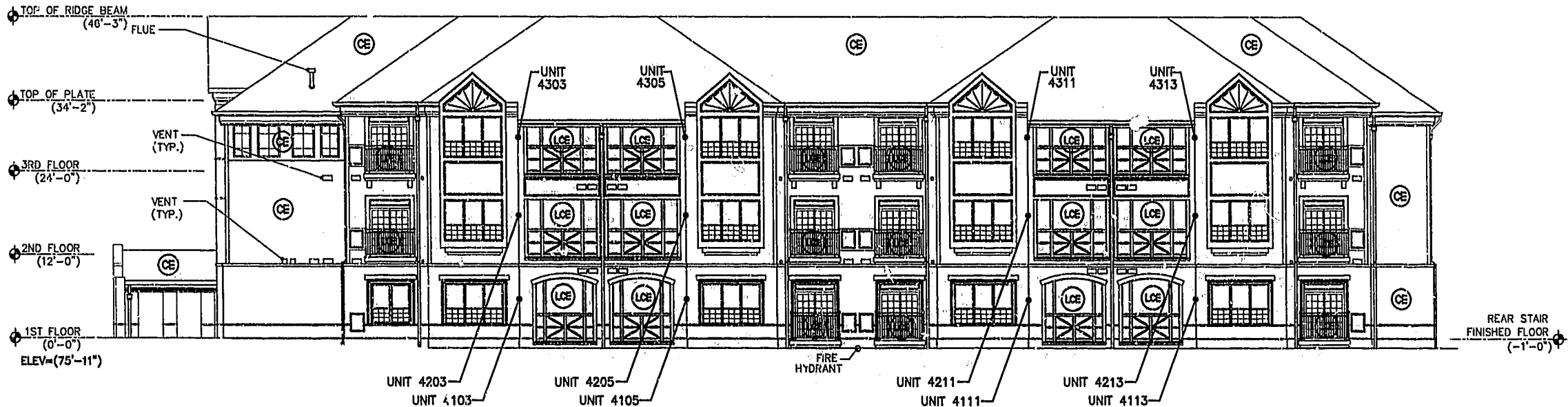
City of Williamsburg & County of James City	
Circuit Court: This PLAT was recorded on	
30 Jan 2002	
at 10:46 AM, PB. 85, PG. 4-13	
DOCUMENT # 020002823	
BETSY B. WOPLRIDGE, CLERK	
<i>Betsy B. Woplrige</i> Dep. Clerk	
No.	DATE
REVISION / COMMENT / NOTE	
BY	

Designed	Drawn
ADS	JFS
Scale	Date
NOTED	4/11/01
Project No.	
7739-11	
Drawing No.	
8 OF 10	

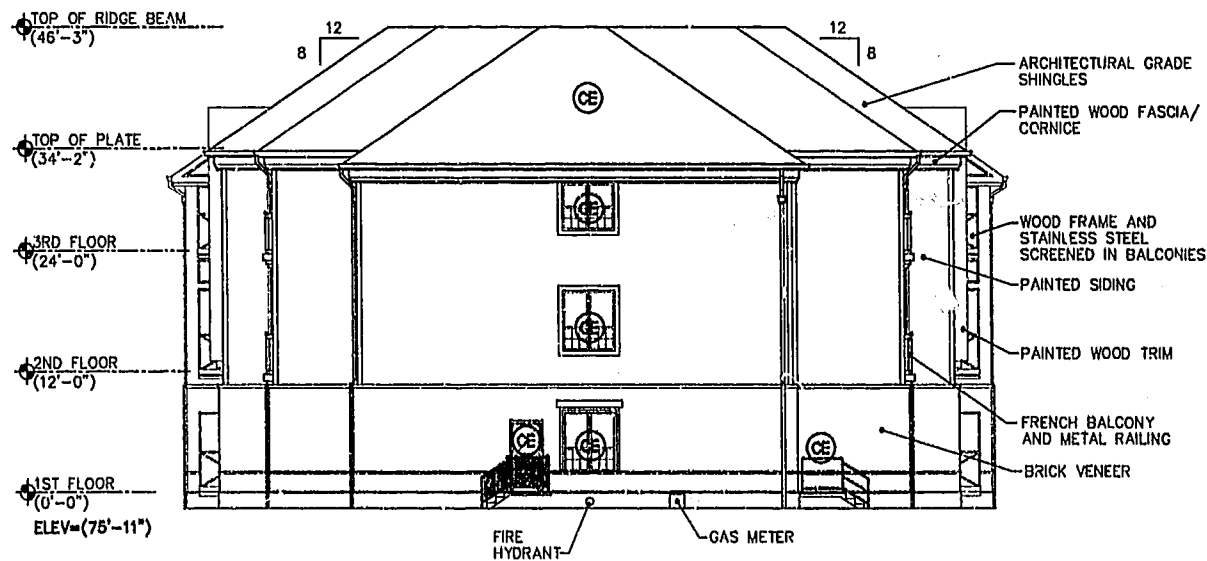
NOTE:
BOLD DIMENSIONS ARE BASED UPON ACTUAL FIELD MEASUREMENTS. OTHER BUILDING DIMENSIONS AND DETAILS SHOWN ARE PER PLANS BY CMSS ARCHITECTS, P.C..

CE COMMON ELEMENT

LCE LIMITED COMMON ELEMENT



RIGHT SIDE BUILDING ELEVATION (NOT TO SCALE)

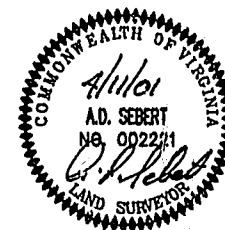


REAR BUILDING ELEVATION (NOT TO SCALE)

NOTES:

- 1. THE LOWER (HORIZONTAL) BOUNDARY OF EACH UNIT IN BUILDING 4000 SHOWN ON THE PLAT AS LOCATED ON PHASE X IS THE HORIZONTAL PLANE OF THE UPPER SURFACE OF THE FLOOR SLAB OR CONCRETE FLOOR TOPPING OF THE UNIT.
- 2. THE UPPER (HORIZONTAL) BOUNDARY OF EACH OF THE UNITS IN BUILDING 4000 SHOWN ON THE PLAT AS LOCATED ON PHASE X IS THE HORIZONTAL PLANE(S) OF THE LOWER SURFACE OF THE FLOOR JOISTS (OR, IN THE CASE OF THIRD FLOOR UNITS, THE LOWER SURFACE OF THE BOTTOM CHORD OF THE ROOF TRUSSES) CONSTITUTING A PART OF THE CEILING OF THE UNIT.

SEE TWELFTH AMENDMENT TO DECLARATION OF CONDOMINIUM OF MANOR CLUB AT FORD'S COLONY, A CONDOMINIUM (PHASE X CONDOMINIUM AGREEMENT) FOR A MORE DETAILED DESCRIPTION.



CERTIFICATION FOR PLANS

"THE UNDERSIGNED, A LICENSED LAND SURVEYOR, DOES HEREBY CERTIFY THAT THESE PLANS ARE IN COMPLIANCE WITH VA. CODE ANN. SUBSECTIONS 55-79.58 B AND F. IT BEING UNDERSTOOD THAT SUCH UNITS ARE BEING SUBJECTED TO A TIME-SHARE INSTRUMENT PURSUANT TO VA. CODE ANN. SECTION 55-367 AND THUS VA. CODE ANN. SUBSECTION 55-79.58 D APPLIES. I FURTHER CERTIFY THAT ALL UNITS OR PORTIONS THEREOF DEPICTED HEREON HAVE BEEN SUBSTANTIALLY COMPLETED."

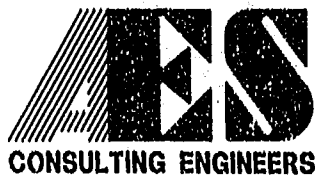
A. D. SEBERT, L.S.

4/11/01 DATE

EXHIBIT A-3

PLAT OF CONDOMINIUM MANOR CLUB AT FORD'S COLONY PHASE X

OWNER/DEVELOPER: MARRIOTT OWNERSHIP RESORTS, INC. POWHATAN DISTRICT JAMES CITY COUNTY VIRGINIA



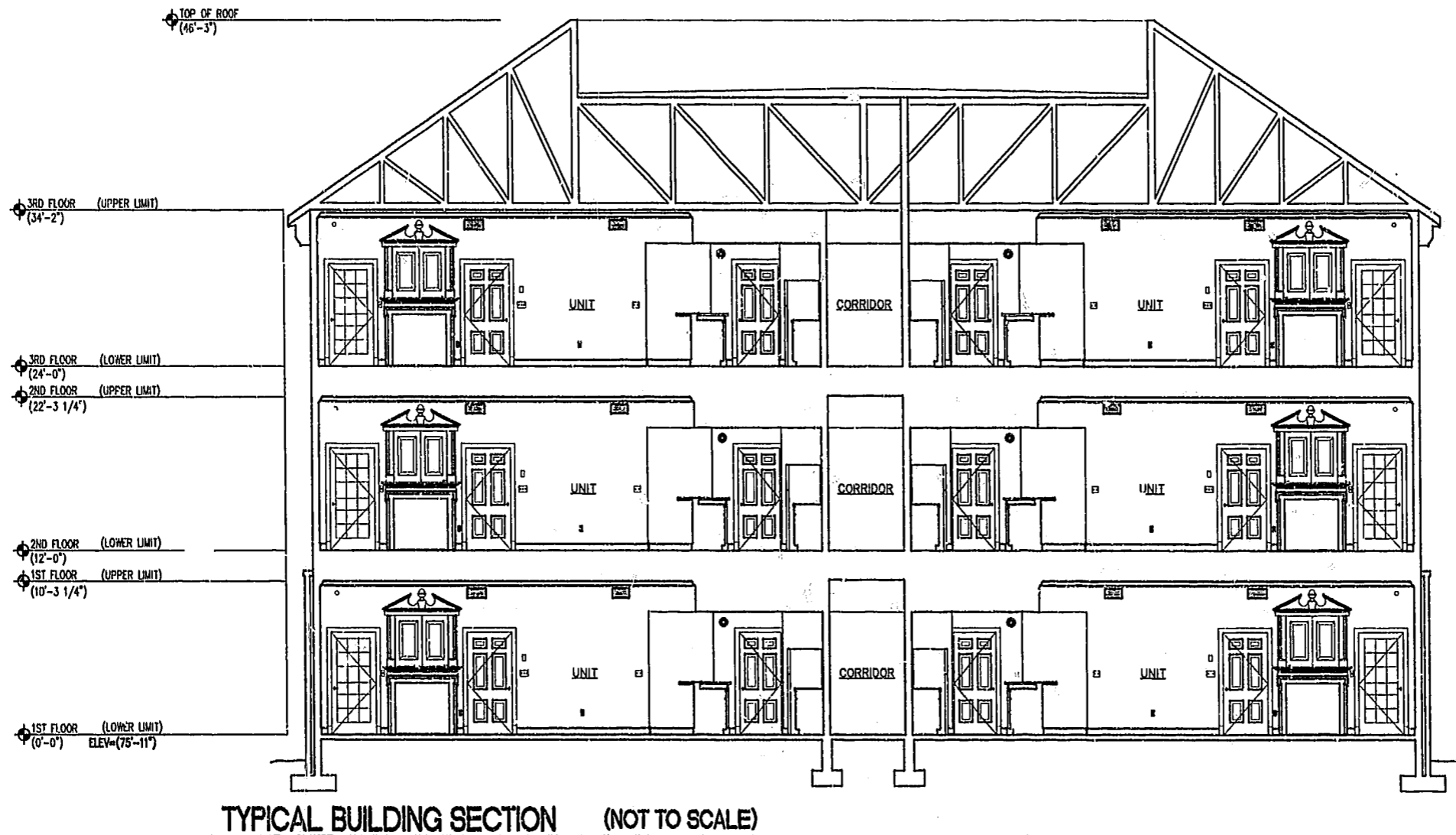
5248 Olde Towne Road, Suite 1 Williamsburg, Virginia 23188 (757) 253-0040 Fax (757) 220-8994

City of Williamsburg & County of James City			
Circuit Court: This PLAT was recorded on			
30 Nov 2002			
at 10:48 AM, PB 85, Pg 4-13			
DOCUMENT # 020002823			
JESSY B. WOOLRIDGE, CLERK			
JESSY B. WOOLRIDGE, Dep. Clerk			
No.	DATE	REVISION / COMMENT / NOTE	BY

Designed	Drawn
ADS	JFS
Scale	Date
NOTED	4/11/01
Project No.	
7739-11	
Drawing No.	
9 OF 10	

04:17:01-10:57 MCPXPO9R.DWG JFS

NOTE:
BOLD DIMENSIONS ARE BASED UPON ACTUAL
FIELD MEASUREMENTS. OTHER BUILDING
DIMENSIONS AND DETAILS SHOWN ARE PER
PLANS BY CMSS ARCHITECTS, P.C.



TYPICAL BUILDING SECTION (NOT TO SCALE)

NOTES: *

1. THE LOWER (HORIZONTAL) BOUNDARY OF EACH UNIT IN BUILDING 4000 SHOWN ON THE PLAT AS LOCATED ON PHASE X IS THE HORIZONTAL PLANE OF THE UPPER SURFACE OF THE FLOOR SLAB OR CONCRETE FLOOR TOPPING OF THE UNIT.
 2. THE UPPER (HORIZONTAL) BOUNDARY OF EACH OF THE UNITS IN BUILDING 4000 SHOWN ON THE PLAT AS LOCATED ON PHASE X IS THE HORIZONTAL PLANE(S) OF THE LOWER SURFACE OF THE FLOOR JOISTS (OR, IN THE CASE OF THIRD FLOOR UNITS, THE LOWER SURFACE OF THE BOTTOM CHORD OF THE ROOF TRUSSES) CONSTITUTING A PART OF THE CEILING OF THE UNIT.
- * SEE TWELFTH AMENDMENT TO DECLARATION OF CONDOMINIUM OF MANOR CLUB AT FORD'S COLONY, A CONDOMINIUM (PHASE X CONDOMINIUM AGREEMENT) FOR A MORE DETAILED DESCRIPTION.

CERTIFICATION FOR PLANS

"THE UNDERSIGNED, A LICENSED LAND SURVEYOR, DOES HEREBY CERTIFY THAT THESE PLANS ARE IN COMPLIANCE WITH VA. CODE ANN. SUBSECTIONS 55-79.58 B AND F. IT BEING UNDERSTOOD THAT SUCH UNITS ARE BEING SUBJECTED TO A TIME-SHARE INSTRUMENT PURSUANT TO VA. CODE ANN. SECTION 55-367 AND THUS VA. CODE ANN. SUBSECTION 55-79.58 D APPLIES. I FURTHER CERTIFY THAT ALL UNITS OR PORTIONS THEREOF DEPICTED HEREON HAVE BEEN SUBSTANTIALLY COMPLETED."



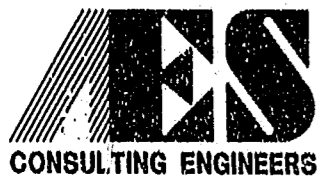
A.D. Sebert
A. D. SEBERT, L.S.

4/11/01
DATE

EXHIBIT A-3

PLAT OF CONDOMINIUM
MANOR CLUB
AT FORD'S COLONY
PHASE X

OWNER/DEVELOPER: MARRIOTT OWNERSHIP RESORTS, INC.
POWHATAN DISTRICT JAMES CITY COUNTY VIRGINIA



5248 Olde Towne Road, Suite 1
Williamsburg, Virginia 23188
(757) 253-0040
Fax (757) 220-8994

CONSULTING ENGINEERS

No.	DATE	REVISION / COMMENT / NOTE	BY
		City of Williamsburg & County of James City Circuit Court: This PLAT was recorded on 30 Jan 2002 at 12:48 AM/PM PB 85 pg 4-13 DOCUMENT # 020002823 JETSY B. WOOLRIDGE, CLERK	

Designed	Drawn
ADS	JFS
Scale	Date
NOTED	4/11/01
Project No.	
7730-11	
Drawing No.	
10 OF 10	