

SURVEYOR'S CERTIFICATE

THE UNDERSIGNED, A LICENSED LAND SURVEYOR, DOES HEREBY CERTIFY THAT THIS PLAT IS ACCURATE AND COMPLIES WITH THE PROVISIONS OF VA. CODE ANN. SUBSECTIONS 55-79.58 A, C AND F. ALL UNITS DEPICTED HEREON ARE COMPLETED; IT BEING UNDERSTOOD THAT SUCH UNITS ARE BEING SUBJECTED TO A TIME-SHARE INSTRUMENT PURSUANT TO VA. CODE ANN. SECTION 55-387 AND THIS VA. CODE ANN. SUBSECTION 55-79.58 D APPLIES.

A.D. Sebort 4/11/01  
A. D. SEBERT, L.S. DATE

CE- COMMON ELEMENTS

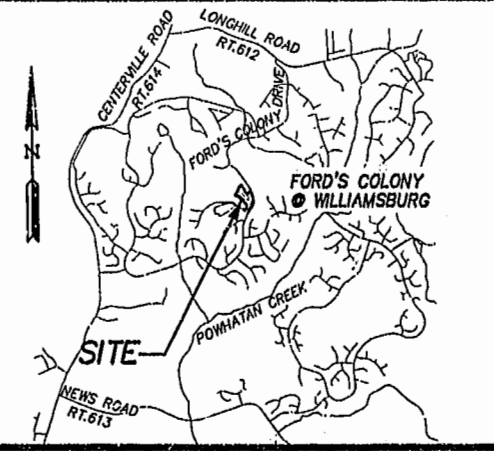
COMMON ELEMENTS INCLUDE ALL PORTIONS OF THE CONDOMINIUM OTHER THAN THE UNITS SHOWN AND DESIGNATED HEREON AND DEFINED IN THE CONDOMINIUM DOCUMENTS AND THE LIMITED COMMON ELEMENTS. EXAMPLES OF COMMON ELEMENTS ARE: PARKING, PAVED AREAS, THE GROUNDS (WHETHER OR NOT LANDSCAPED), ALL PORTIONS OF THE BUILDINGS NOT A PART OF THE UNIT NOR DEFINED AS LIMITED COMMON ELEMENTS, AND ALL CONDUITS, INSTALLATIONS, WIRES, PIPES, EQUIPMENT, ETC. WHICH SERVE OTHER COMMON ELEMENTS OR WHICH SERVE MORE THAN ONE UNIT.

LCE- LIMITED COMMON ELEMENTS

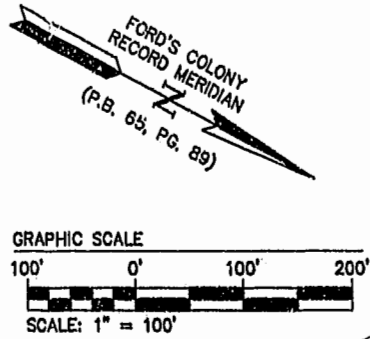
EXCEPT AS MAY BE OTHERWISE EXPRESSLY PROVIDED, LIMITED COMMON ELEMENTS INCLUDE DOORS, WINDOWS, PORCHES, BALCONIES, AND ANY OTHER APPARATUS DESIGNED TO SERVE A SINGLE UNIT, BUT LOCATED OUTSIDE THE BOUNDARIES THEREOF.

PARCEL A  
REALTEC INCORPORATED  
AREA = 1,424,955 S.F.±  
32.7124 ACRES±  
(P.B. 65, PG. 89)  
DOCUMENT #990000642  
TAX PARCEL (31-3)(1-53)

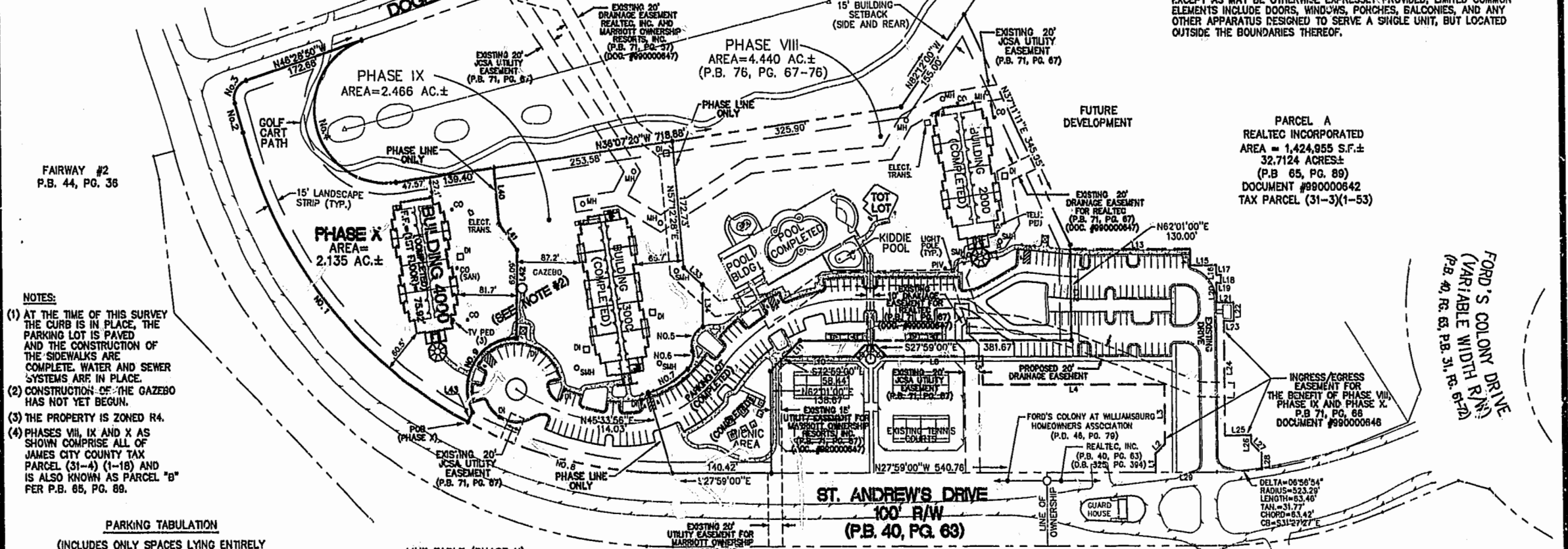
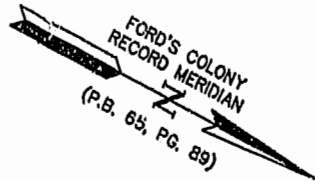
FORD'S COLONY DRIVE  
(VARIABLE WIDTH R/W)  
(P.B. 40, PG. 63; P.B. 31, PG. 61-62)



LOCATION MAP 1" = 4000'



THE LINKS I & II  
P.B. 43, PG. 8-11  
P.B. 43, PG. 13-16



- NOTES: (1) AT THE TIME OF THIS SURVEY THE CURB IS IN PLACE, THE PARKING LOT IS PAVED AND THE CONSTRUCTION OF THE SIDEWALKS ARE COMPLETE. WATER AND SEWER SYSTEMS ARE IN PLACE. (2) CONSTRUCTION OF THE GAZEBO HAS NOT YET BEGUN. (3) THE PROPERTY IS ZONED R4. (4) PHASES VIII, IX AND X AS SHOWN COMPRISE ALL OF JAMES CITY COUNTY TAX PARCEL (31-4) (1-18) AND IS ALSO KNOWN AS PARCEL "B" FER P.B. 65, PG. 89.

PARKING TABULATION (INCLUDES ONLY SPACES LYING ENTIRELY ON PHASE VII, IX AND X)

PHASE VIII	83 SPACES (INCLUDING 4 HANDICAPPED)
PHASE IX	34 SPACES (INCLUDING 2 HANDICAPPED)
TOTAL	117 SPACES (INCLUDING 6 HANDICAPPED)

LINE TABLE (PHASE X)

NUMBER	BEARING	DISTANCE
L40	N87°12'28"E	78.91'
L41	N20°09'40"E	43.28'
L42	N82°55'24"E	120.20'
L43	N89°38'58"E	15.00'

CURVE TABLE PHASE X

NUMBER	DELTA	RADIUS	LENGTH	TANGENT	CHORD	CH. BEAR
No.1	48°02'04"	618.23	518.30	276.48	503.25	S23°37'58"W
No.2	01°53'57"	1250.00	41.43	20.72	41.43	S48°42'03"W
No.3	87°48'06"	25.00	38.30	24.05	34.68	S89°38'05"W
No.4	169°38'33"	100.00	298.08	1103.35	199.18	N48°41'58"E
No.9	117°32'19"	69.50	142.67	114.62	118.86	S85°50'40"E

LINE TABLE (PHASE IX)

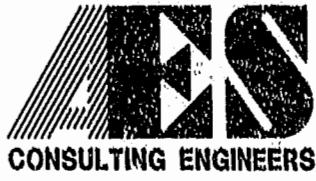
NUMBER	BEARING	DISTANCE
L33	N14°17'32"E	35.00'
L34	N61°50'00"E	57.22'

CURVE TABLE (PHASE IX)

NUMBER	DELTA	RADIUS	LENGTH	TANGENT	CHORD	CH. BEAR
No.5	79°48'33"	28.00	39.00	23.42	35.92	N86°18'10"E
No.6	62°21'24"	25.00	27.21	15.13	25.89	N°7°34'36"E
No.7	26°48'09"	139.37	65.19	33.21	64.60	S57°50'07"E
No.8	27°35'58"	618.23	297.79	151.85	294.93	S14°11'02"E

LINE TABLE FOR ACCESS EASEMENT (DOCUMENT #990000648)

NUMBER	BEARING	DISTANCE
L1	S62°01'00"W	25.36'
L2	S172°59'00"W	18.92'
L3	S62°01'00"W	81.26'
L4	S27°59'00"E	256.13'
L5	S82°01'00"W	38.50'
L6	S27°59'00"E	134.21'
L7	S17°01'00"W	21.53'
L8	S27°59'00"E	15.00'
L9	S27°59'00"E	21.53'
L10	S27°59'00"E	98.52'
L11	N122°59'00"W	30.40'
L12	S62°01'00"W	124.18'
L13	N27°59'00"W	169.56'
L14	N62°01'00"E	22.18'
L15	N27°59'00"W	35.44'
L16	N82°01'00"E	13.24'
L17	N27°59'00"W	6.66'
L18	N82°01'00"E	11.00'
L19	S27°59'00"E	6.66'
L20	N62°01'00"E	26.54'
L21	N27°59'00"W	24.00'
L22	N82°01'00"E	25.00'
L23	S27°59'00"E	14.00'
L24	N82°01'00"E	155.93'
L25	N27°59'00"W	38.64'
L26	N82°01'00"E	10.66'
L27	N17°01'00"E	21.02'
L28	N82°01'00"E	21.52'
L29	S27°59'00"E	86.44'



5248 Olde Towne Road, Suite 1  
Williamsburg, Virginia 23188  
(757) 253-0040  
Fax (757) 220-8994

EXHIBIT A-2  
PLAT OF CONDOMINIUM  
MANOR CLUB  
AT FORD'S COLONY  
PHASE X  
OWNER/DEVELOPER: MARRIOTT OWNERSHIP RESORTS, INC.  
POWHATAN DISTRICT JAMES CITY COUNTY VIRGINIA



City of Williamsburg & County of James City  
Circuit Court: This PLAT was recorded on  
30 Jan 2001  
at 10:48 AM P.B. 65, PG. 4-13  
DOCUMENT # 020002823  
BETSY B. WOOLRIDGE, CLERK

No.	DATE	REVISION / COMMENT / NOTE	BY

Designed ADS	Drawn JFS
Scale 1"=100'	Date 4/11/01
Project No. 7739-11	
Drawing No. 1 OF 10	

04-16-01-09-55 MCPXP01R.DWG JFS