

#020002730

85 PAGE 2

PLAT OF SUBDIVISION
WATERFORD
 AT
POWHATAN SECONDARY
 PHASE TWENTY-EIGHT
 BERKELEY DISTRICT
 JAMES CITY COUNTY, VIRGINIA

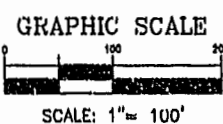
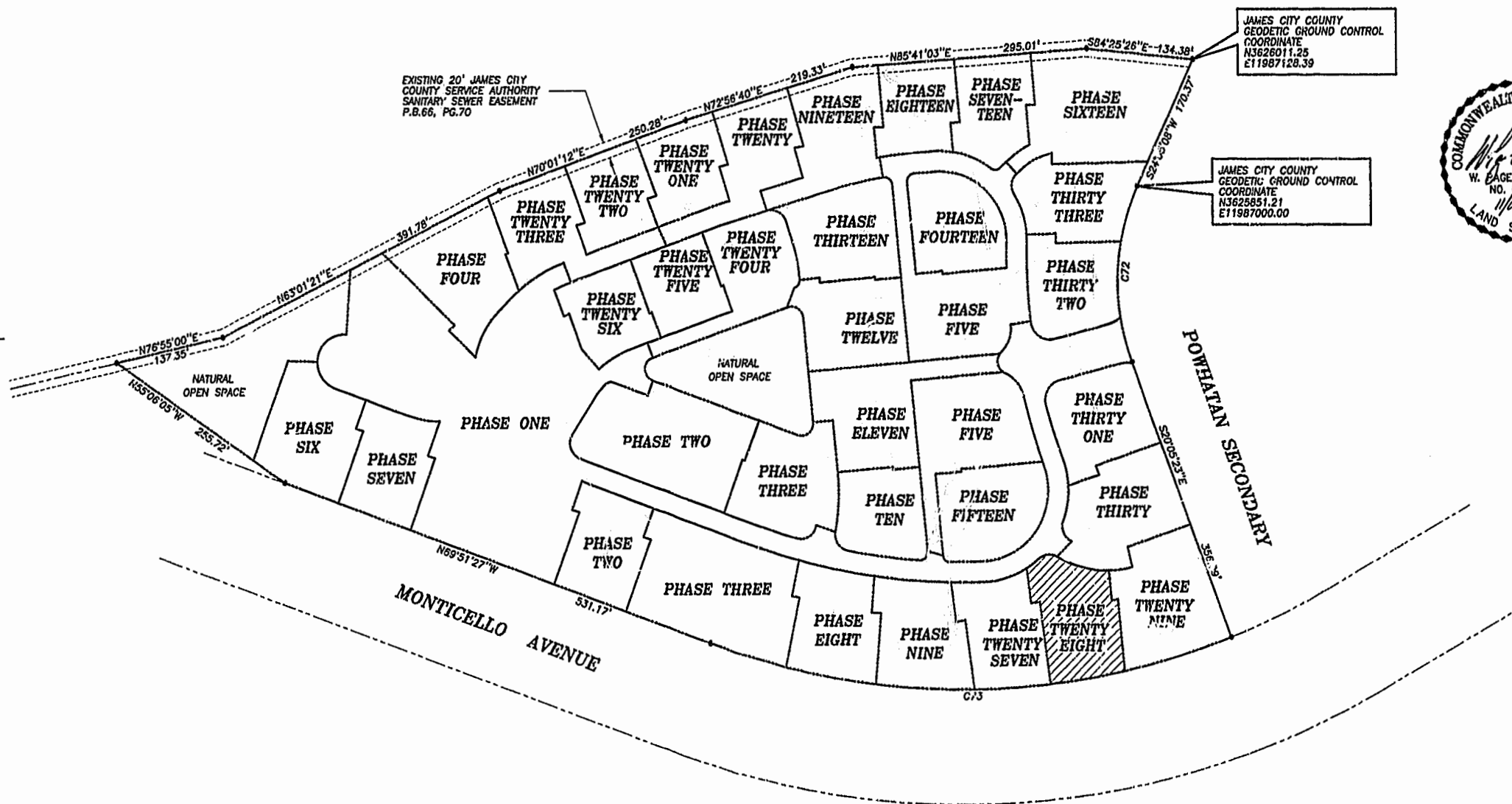
DATE: 10/21/98 SHEET 2 OF 3 SCALE: 1"=100'
 PROJECT NO: 97-008 DRAWN BY: SJB

SA

SLEDD & ASSOCIATES, P.C.
 ENGINEERS PLANNERS SURVEYORS
 11832 ROCK LANDING DRIVE, SUITE 203
 NEWPORT NEWS, VIRGINIA 23606
 (7) 873-3386

00°32'24"
 JAMES CITY COUNTY
 PLAT BOOK 85, PAGE 70

NOW OR FORMERLY
 POWHATAN ENTERPRISES, INC.



CURVE DATA

NUMBER	DELTA	RADIUS	LENGTH	TANGENT	CHORD	CHORD BEARING
C72	45°00'31"	280.00'	219.95'	116.00'	214.34'	S02°24'52"W
C73	41°26'14"	924.91'	668.91'	349.84'	654.43'	S89°25'26"W

City of Williamsburg & County of James City
 Circuit Court: This PLAT was recorded on
 29 Jan 2002
 at 1:26 PM, PB 85, PG 1-3
 DOCUMENT # 020002730
 GETSY B. WOOLRIDGE, CLERK
 Getsy B. Woolridge, Dep. Clerk

PLAT BOOK 85, PAGE 1-3

REVISED: 01/15/02
 WATERFORD PH.28 97-008