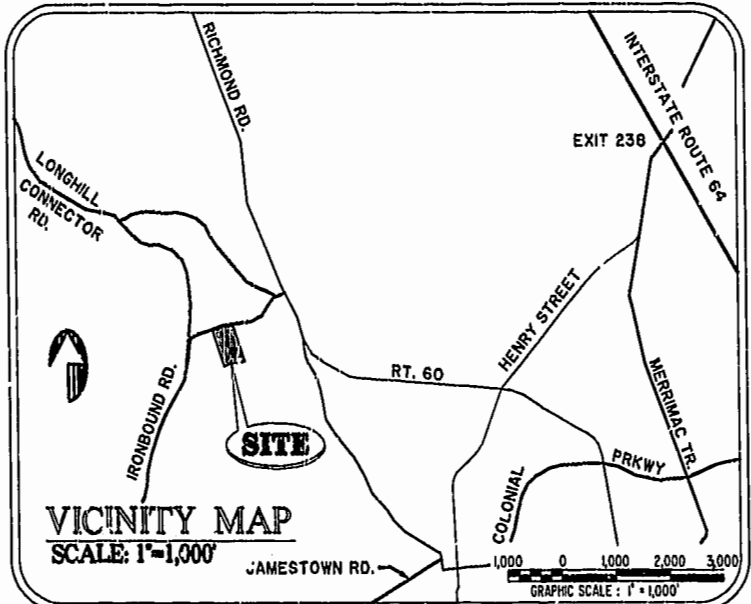


SCALE: 1" = 25'

City of Williamsburg & County of James City  
 Circuit Court: This PLAT was recorded on  
November 21, 2001  
 at 10:31 AM, PG 98-101  
 DOCUMENT # 011807 10:31  
 BETSY B. WOOLRIDGE, CLERK  
*Betsy Woolridge*, Dep. Clerk

- NOTES:
1. THE TOTAL AREA OF SITE IS 410,669 SQ.FT. (9.611 AC.) OF WHICH NONE IS ADDITIONAL LAND.
  2. THE AREA OF THE SUBMITTED LAND IS 410,669 SQ.FT. (9.611 AC.)
  3. THE COMMON AREA IS TO BE THE RESPONSIBILITY OF THE CONDOMINIUM ASSOCIATION AND HAS A TOTAL AREA OF 3,642 AC.



CURVE DATA - R/W ENTRANCE

Nº	DELTA	RADIUS	LENGTH	TANGENT
1-A	0°30'46"	1655.00'	43.70'	21.85'
2-A	02°51'31"	1605.00'	80.06'	40.05'
3-A	04°23'50"	1655.00'	127.01'	63.54'
4-A	02°41'18"	1705.00'	80.00'	40.01'

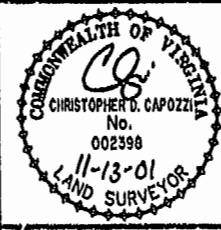
BUILDING No.	UNIT TYPE	UNIT No.	ADDRESS	PARKING No.
200	AR	2-201	201 BRISTOL COMMON	21
200	B	2-202	202 BRISTOL COMMON	19
200	A	2-203	203 BRISTOL COMMON	17
200	E	2-204	204 BRISTOL COMMON	15
200	C	2-205	205 BRISTOL COMMON	13
200	D	2-206	206 BRISTOL COMMON	31
200	F	2-207	207 BRISTOL COMMON	30
200	DR	2-208	208 BRISTOL COMMON	28
200	CR	2-209	209 BRISTOL COMMON	27
200	ER	2-210	210 BRISTOL COMMON	25

I CHRISTOPHER D. CAPOZZI, A CERTIFIED LAND SURVEYOR, DO HEREBY CERTIFY THAT THIS PLAT IS ACCURATE, AND THAT IT COMPLIES WITH THE PROVISIONS OF SECTION 55 - 79.58A OF THE CODE OF VIRGINIA. I FURTHER HEREBY CERTIFY THAT ALL UNITS OR PORTIONS THEREOF DEPICTED HEREON HAVE BEEN SUBSTANTIALLY COMPLETED.

THE UNDERSIGNED CERTIFIED LAND SURVEYOR CERTIFIES THAT HE HAS READ SECTION 55 - 79.58B OF THE CODE OF VIRGINIA, AND FINDS THIS PLAT TO BE ACCURATE AND IN COMPLIANCE WITH THE CODE. I FURTHER CERTIFY THAT ALL UNITS OR PORTIONS THEREOF DEPICTED HEREON HAVE BEEN SUBSTANTIALLY COMPLETED.

11-13-01  
DATE

*C.D. Capozzi*  
LAND SURVEYOR No. 002398



**Hassell & Folkes, P.C.**  
 Engineers Surveyors Planners  
 325 Volvo Parkway  
 Chesapeake, VA 23320  
 (757) 547-9531

DRAWN BY:	HJS	DATE	11/05/01
COMP BY:	GJR	DATE	08/31/98
CHECKED BY:	HBA	DATE	11/06/01

**BRISTOL COMMONS**  
 A CONDOMINIUM COMMUNITY  
 PHASE ELEVEN  
 FOR  
**KEY GROUP, LLC**  
 CITY OF WILLIAMSBURG, VIRGINIA

SIZE	CONTRACT NO	DISK/BOX	FILENAME	REV.
C	98062	123M/15	BRISTOL.DWG	

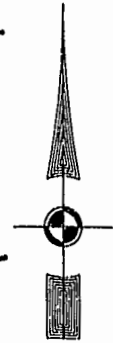
SCALE: 1" = 25' DATE: 11/05/01 SHEET 1 of 4

NOW OR FORMERLY  
COLLEGE OF WILLIAM & MARY

IRONBOUND

(APPROX. R/W)

ROAD



T.P. 372-(0A)-00-028  
NOW OR FORMERLY  
JEROME & EVELYN RANDOLPH  
(D.B. 30, PG. 470)  
ZONE: RM-2

T.P. 372-(0A)-00-030  
NOW OR FORMERLY  
JEROME & EVELYN RANDOLPH  
(D.B. 37, PG. 379)  
ZONE: RM-2

T.P. 372-(05)-00-001  
NOW OR FORMERLY  
CHESAPEAKE MEDIA, INC.  
(D.B. 74, PG. 121)  
(M.B. 42, PG. 25)  
ZONE: B-2 CONDITIONAL

MATCH LINE  
SEE SHEET 3

40' R/W  
ROLAND STREET

MATCH LINE  
SEE SHEET 3

PHASE 6  
SEE SHEET 3

PHASE 10  
SEE SHEET 3

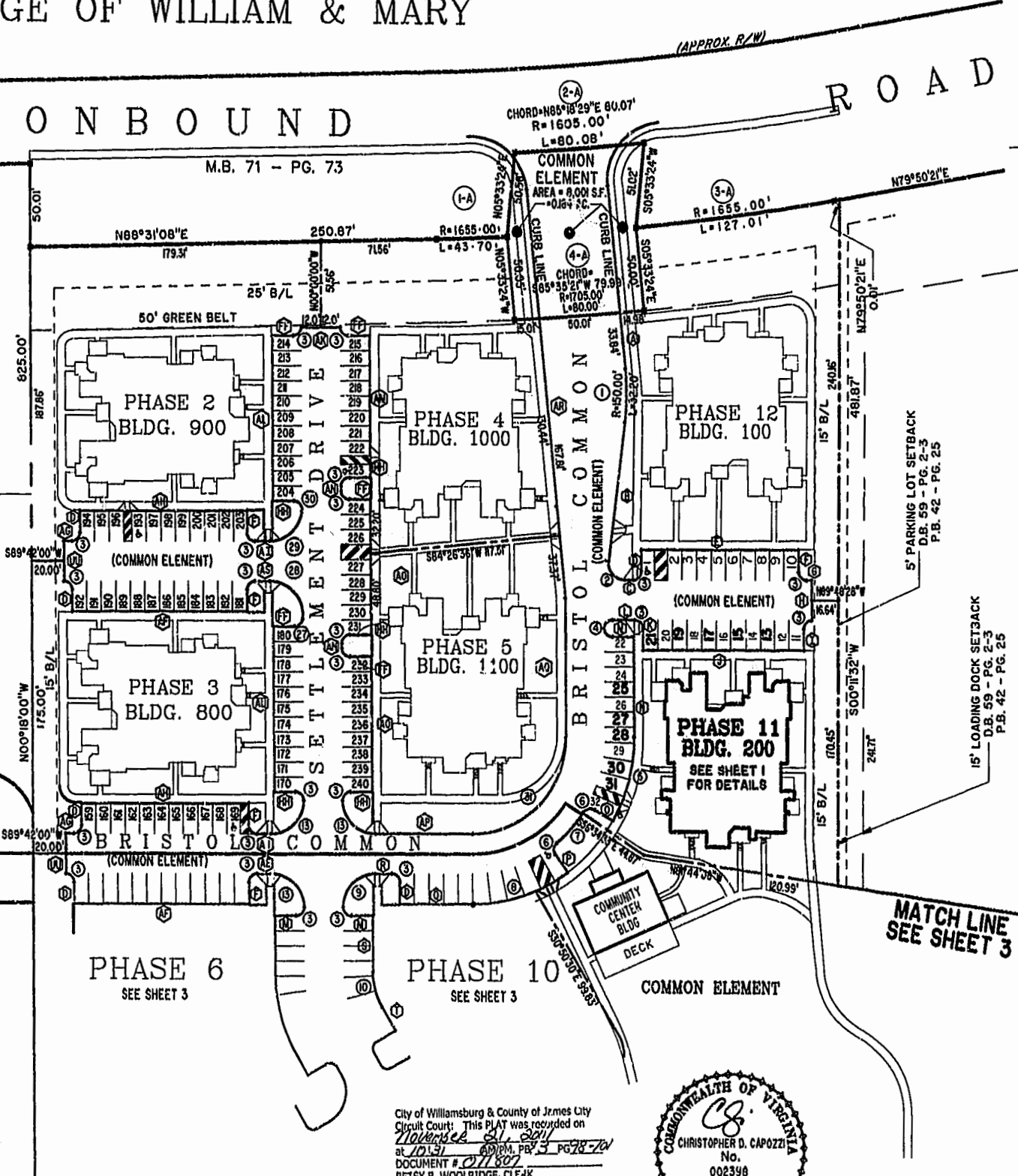
COMMON ELEMENT

City of Williamsburg & County of James City  
Circuit Court: This PLAT was recorded on  
*November 21, 2011*  
at 10:31 AM, PG. 3 PG. 28-70  
DOCUMENT # 011807  
BETSY B. WOOLRIDGE, CLF,AK  
*Betsy Woolridge* Dep. Clerk

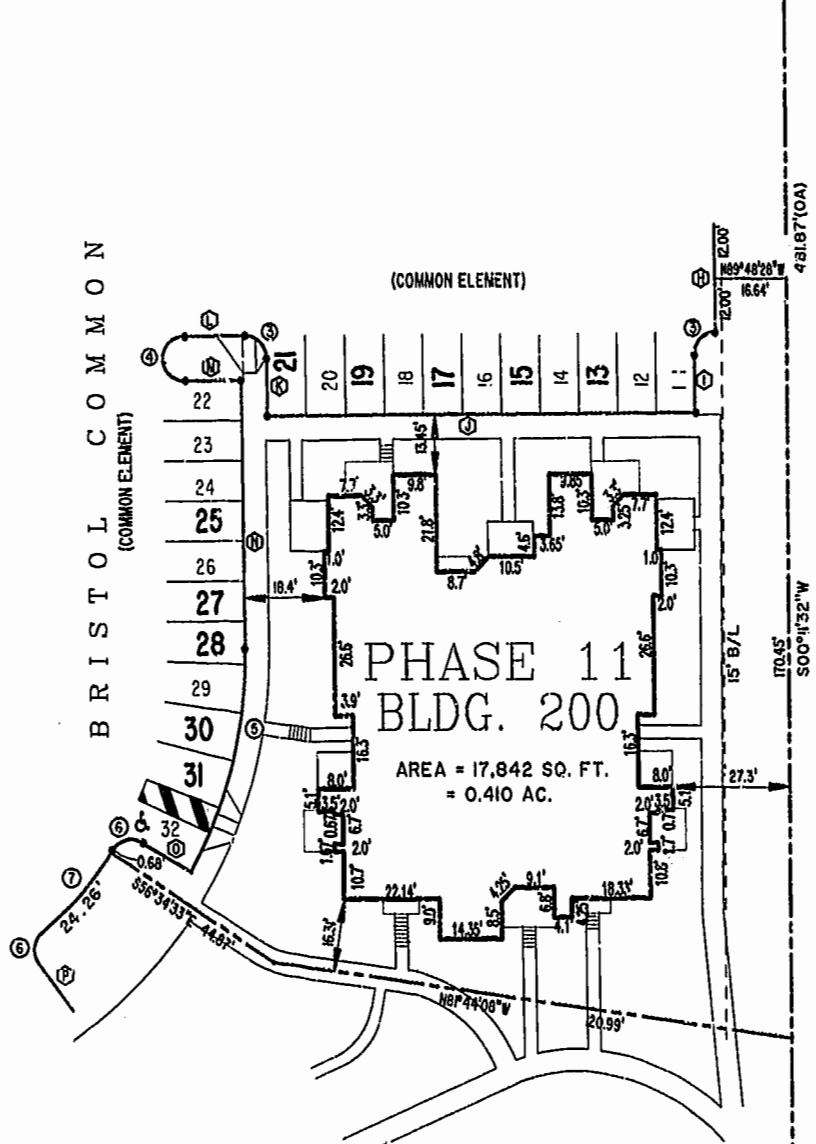


BRISTOL COMMONS  
A CONDOMINIUM COMMUNITY  
PHASE ELEVEN  
FOR  
KEY GROUP, LLC  
CITY OF WILLIAMSBURG, VIRGINIA

Hassell & Polkes, P.C. Engineers Surveyors Planners Chesapeake, VA 23320 (757) 547-9531	SIZE C	CONTRACT NO 63062	DISK/BOX 123M/15	FILENAME BRISTOL.DWG	REV. 1
SCALE: 1"=50'		DATE: 11/05/01		SHEET 2 of 4	



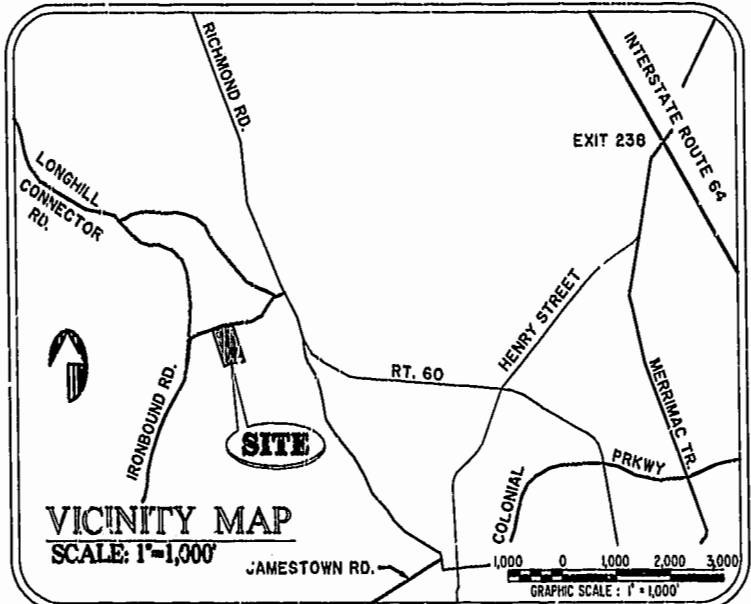




SCALE: 1" = 25'

City of Williamsburg & County of James City  
 Circuit Court: This PLAT was recorded on  
November 21, 2001  
 at 10:31 AM, PG 98-101  
 DOCUMENT # 011807 101.31  
 BETSY B. WOOLRIDGE, CLERK  
*Betsy Woolridge*, Dep. Clerk

- NOTES:
1. THE TOTAL AREA OF SITE IS 410,669 SQ.FT. (9.611 AC.) OF WHICH NONE IS ADDITIONAL LAND.
  2. THE AREA OF THE SUBMITTED LAND IS 410,669 SQ.FT. (9.611 AC.)
  3. THE COMMON AREA IS TO BE THE RESPONSIBILITY OF THE CONDOMINIUM ASSOCIATION AND HAS A TOTAL AREA OF 3,642 AC.



CURVE DATA - R/W ENTRANCE

Nº	DELTA	RADIUS	LENGTH	TANGENT
1-A	0°30'46"	1655.00'	43.70'	21.85'
2-A	02°51'31"	1605.00'	80.08'	40.05'
3-A	04°23'50"	1655.00'	127.01'	63.54'
4-A	02°41'18"	1705.00'	80.00'	40.01'

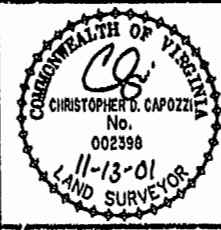
BUILDING No.	UNIT TYPE	UNIT No.	ADDRESS	PARKING No.
200	AR	2-201	201 BRISTOL COMMON	21
200	B	2-202	202 BRISTOL COMMON	19
200	A	2-203	203 BRISTOL COMMON	17
200	E	2-204	204 BRISTOL COMMON	15
200	C	2-205	205 BRISTOL COMMON	13
200	D	2-206	206 BRISTOL COMMON	31
200	F	2-207	207 BRISTOL COMMON	30
200	DR	2-208	208 BRISTOL COMMON	28
200	CR	2-209	209 BRISTOL COMMON	27
200	ER	2-210	210 BRISTOL COMMON	25

I CHRISTOPHER D. CAPOZZI, A CERTIFIED LAND SURVEYOR, DO HEREBY CERTIFY THAT THIS PLAT IS ACCURATE, AND THAT IT COMPLIES WITH THE PROVISIONS OF SECTION 55 - 79.58A OF THE CODE OF VIRGINIA. I FURTHER HEREBY CERTIFY THAT ALL UNITS OR PORTIONS THEREOF DEPICTED HEREON HAVE BEEN SUBSTANTIALLY COMPLETED.

THE UNDERSIGNED CERTIFIED LAND SURVEYOR CERTIFIES THAT HE HAS READ SECTION 55 - 79.58B OF THE CODE OF VIRGINIA, AND FINDS THIS PLAT TO BE ACCURATE AND IN COMPLIANCE WITH THE CODE. I FURTHER CERTIFY THAT ALL UNITS OR PORTIONS THEREOF DEPICTED HEREON HAVE BEEN SUBSTANTIALLY COMPLETED.

11-13-01  
DATE

*CP*  
LAND SURVEYOR No. 002398



**Hassell & Folkes, P.C.**  
 Engineers Surveyors Planners  
 325 Volvo Parkway  
 Chesapeake, VA 23320  
 (757) 547-9531

DRAWN BY:	DATE
HJS	11/05/01
COMP BY:	DATE
GJR	08/31/98
CHECKED BY:	DATE
HBA	11/06/01

**BRISTOL COMMONS**  
 A CONDOMINIUM COMMUNITY  
 PHASE ELEVEN  
 FOR  
**KEY GROUP, LLC**  
 CITY OF WILLIAMSBURG, VIRGINIA

SIZE	CONTRACT NO	DISK/BOX	FILENAME	REV.
C	98062	123M/15	BRISTOL.DWG	

SCALE: 1" = 25' DATE: 11/05/01 SHEET 1 of 4