

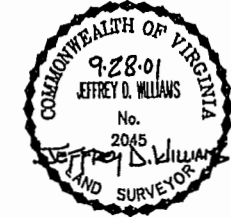
EXHIBIT B-9
SUPPLEMENTAL CONDOMINIUM PLAT
OF
WYNDHAM PLANTATION
CONDOMINIUM

WILLIAMSBURG, VIRGINIA
SCALE: 1"=100' SEPTEMBER 26, 2001
JOHN E. SIRINE AND ASSOCIATES, LTD.
SURVEYORS • ENGINEERS • PLANNERS
VIRGINIA BEACH, VIRGINIA
(757) 486-4910

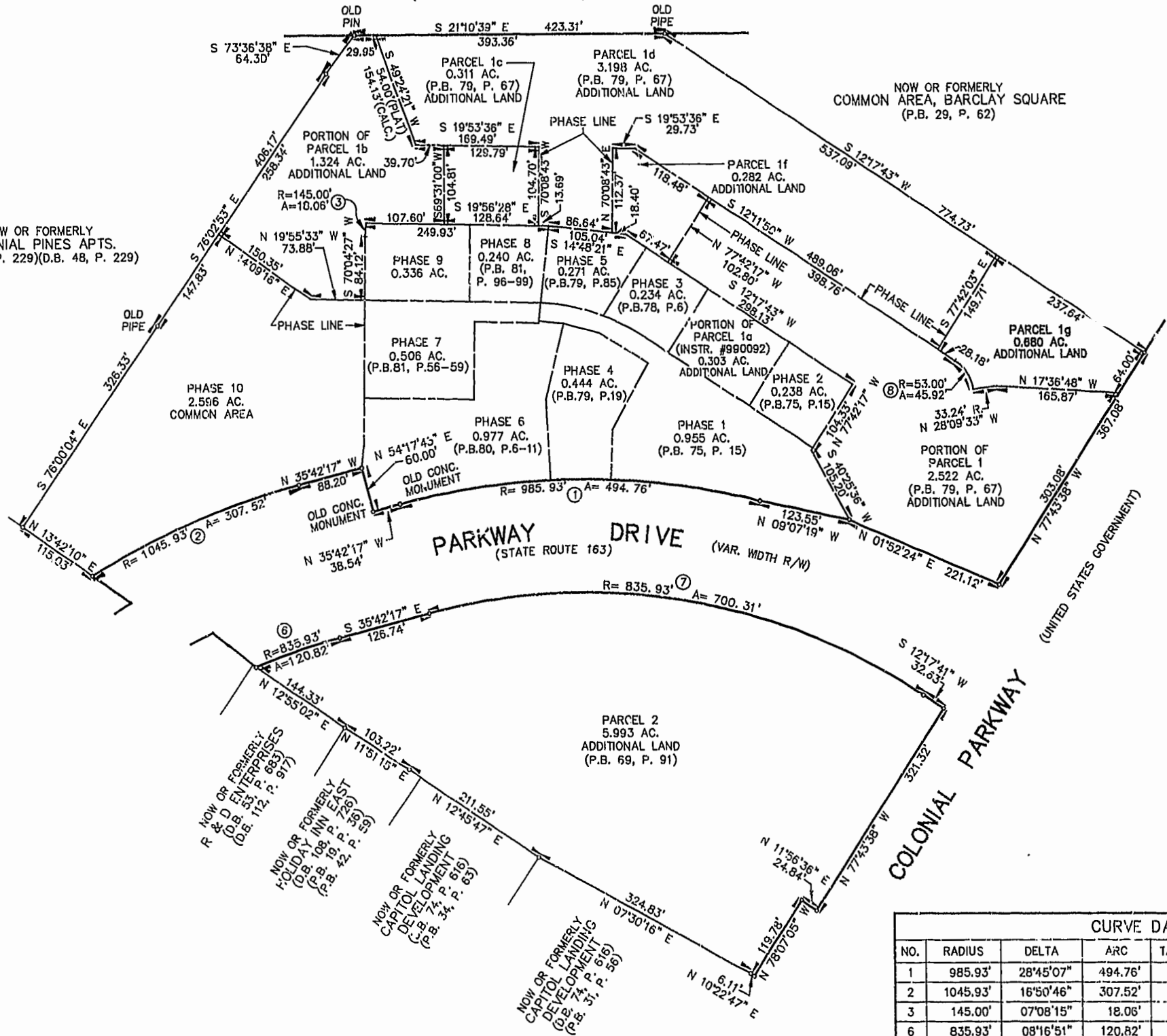
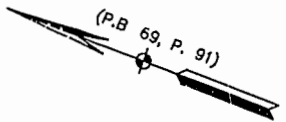
MERRIMAC TRAIL
(STATE ROUTE 143)
(FORMERLY STATE ROUTE 168)

THE UNDERSIGNED CERTIFIES THAT THIS PLAT IS ACCURATE AND COMPLIES WITH THE PROVISIONS OF CODE OF VIRGINIA, SECTION 55-79.58.A AND THAT ALL UNITS OR PORTIONS THEREOF DEPICTED HEREON AND ALL COMMON ELEMENTS HAVE BEEN SUBSTANTIALLY COMPLETED, UNLESS OTHERWISE NOTED.

SIGNED: Jeffrey D. Williams
JEFFREY D. WILLIAMS, L.S.



NOW OR FORMERLY
COLONIAL PINES APTS.
(D.B. 44, P. 229)(D.B. 48, P. 229)



City of Williamsburg & County of James City
Circuit Court: This PLAT was recorded on
October 5, 2001
at 11:33 AM, PB 83, PG 50
DOCUMENT # 011526
BETSY B. WOOLRIDGE, CLERK
Betsy B. Woolridge Dep. Clerk

CURVE DATA						
NO.	RADIUS	DELTA	ARC	TANGENT	CHORD	CHORD BEARING
1	985.93'	28°45'07"	494.76'	252.70'	489.58'	N 21°19'43" W
2	1045.93'	16°50'46"	307.52'	154.88'	306.42'	N 44°07'40" W
3	145.00'	07°08'15"	18.06'	9.04'	18.05'	N 73°38'34" E
6	835.93'	08°16'51"	120.82'	60.51'	120.71'	S 39°50'42" E
7	835.93'	48°00'00"	700.31'	372.18'	680.01'	S 11°42'18" E
8	53.00'	49°38'37"	45.92'	24.51'	44.50'	N 37°01'09" E

