

CURVE DATA - R/W ENTRANCE

N°	DELTA	RADIUS	LENGTH	TANGENT
1-A	0°30'46"	1655.00'	43.70'	21.85'
2-A	02°5'31"	1605.00'	80.08'	40.05'
3-A	04°23'50"	1655.00'	127.01'	63.51'
4-A	02°41'18"	1705.00'	80.00'	40.01'

BUILDING No.	UNIT TYPE	UNIT No.	ADDRESS	PARKING No.
100	AR	1-101	101 BRISTOL COMMON	11
100	B	1-102	102 BRISTOL COMMON	7
100	A	1-103	103 BRISTOL COMMON	6
100	E	1-104	104 BRISTOL COMMON	5
100	C	1-105	105 BRISTOL COMMON	4
100	D	1-106	106 BRISTOL COMMON	3
100	F	1-107	107 BRISTOL COMMON	2
100	DR	1-108	108 BRISTOL COMMON	9
100	CR	1-109	109 BRISTOL COMMON	10
100	ER	1-110	110 BRISTOL COMMON	8

I CHRISTOPHER D. CAPOZZI, A CERTIFIED LAND SURVEYOR, DO HEREBY CERTIFY THAT THIS PLAT IS ACCURATE, AND THAT IT COMPLIES WITH THE PROVISIONS OF SECTION 85 - 79.58A OF THE CODE OF VIRGINIA. I FURTHER HEREBY CERTIFY THAT ALL UNITS OR PORTIONS THEREOF DEPICTED HEREON HAVE BEEN SUBSTANTIALLY COMPLETED.

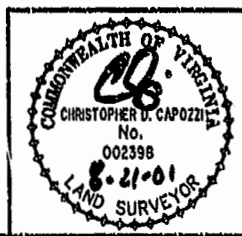
THE UNDERSIGNED CERTIFIED LAND SURVEYOR CERTIFIES THAT HE HAS READ SECTION 85 - 79.58B OF THE CODE OF VIRGINIA, AND FINDS THIS PLAT TO BE ACCURATE AND IN COMPLIANCE WITH THE CODE. I FURTHER CERTIFY THAT ALL UNITS OR PORTIONS THEREOF DEPICTED HEREON HAVE BEEN SUBSTANTIALLY COMPLETED.

8-21-01
DATE

CS
LAND SURVEYOR No. 002398

City of Williamsburg & County of James City
Circuit Court: This PLAT was recorded on
30 Aug 2001
at 2:53 PM, PB 85, PG 14-17
DOCUMENT # 011341
BETSY B. WOODRIDGE, CLERK
Betsy B. Woodridge, Clerk

NOTES:
1. THE TOTAL AREA OF SITE IS 418,669 SQ.FT. (9.611 AC.) OF WHICH 125,343 SQ.FT. (2.878 AC.) IS ADDITIONAL LAND.
2. THE AREA OF THE SUBMITTED LAND IS 293,326 SQ.FT. (6.734 AC.)
3. THE COMMON AREA IS TO BE THE RESPONSIBILITY OF THE CONDOMINIUM ASSOCIATION AND HAS A TOTAL AREA OF 2,286 AC.



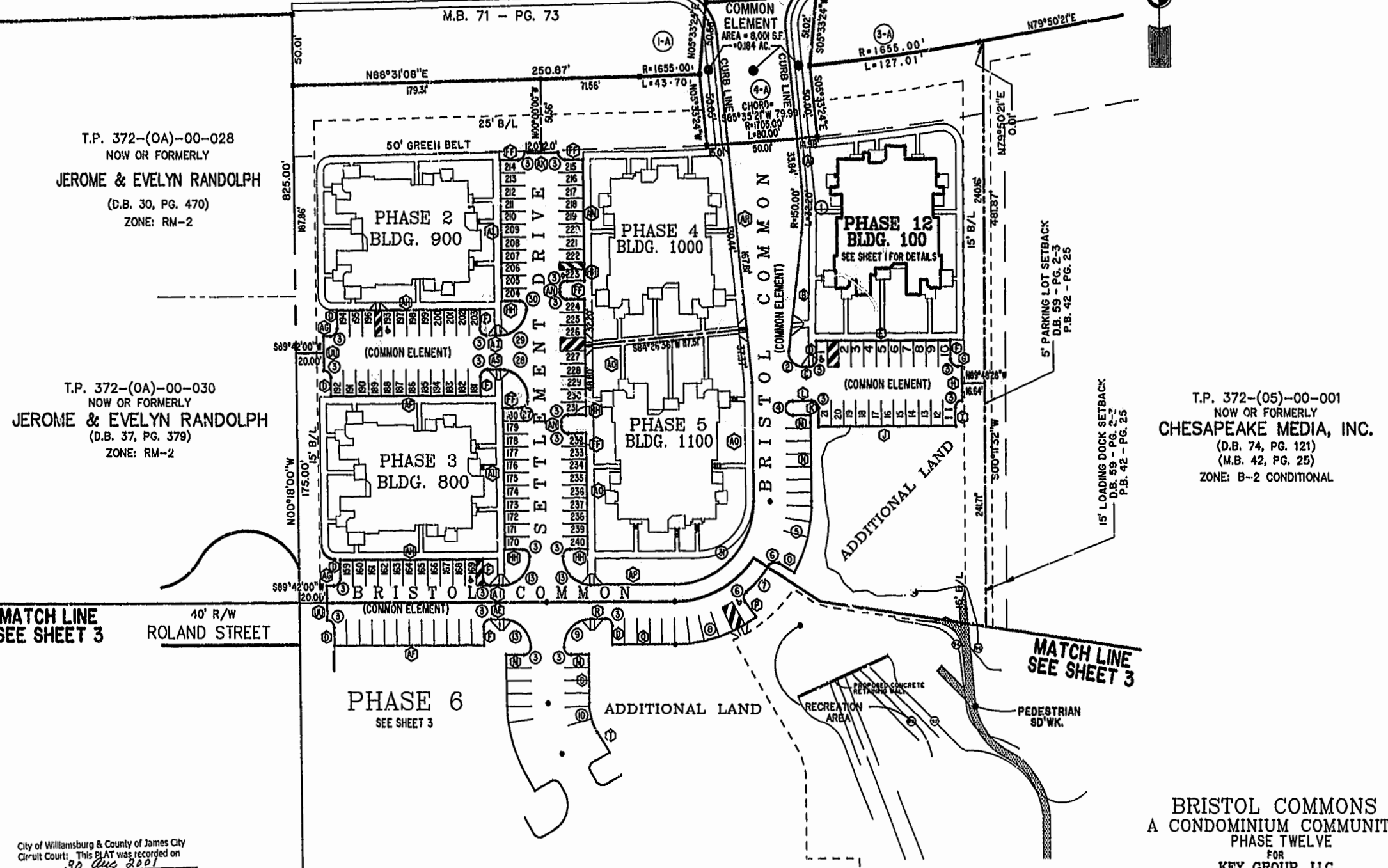
Hassell & Folkes, P.C.
Engineers Surveyors Planners
325 Volvo Parkway
Chesapeake, VA. 23320
(757) 547-9531

DRAWN BY:	DATE
HJS	08/20/01
COMP BY:	DATE
GJR	08/31/98
CHECKED BY:	DATE
HBA	08/20/01

BRISTOL COMMONS A CONDOMINIUM COMMUNITY PHASE TWELVE FOR KEY GROUP, LLC			
CITY OF WILLIAMSBURG,		VIRGINIA	
SIZE	CONTRACT NO	DISK/BOX	FILENAME
C	98062	123/13	BRISTOL12.DWG
SCALE: 1" = 25'	DATE: 08/20/01	SHEET 1 of 4	

NOW OR FORMERLY
COLLEGE OF WILLIAM & MARY

IRONBOUND



T.P. 372-(OA)-00-028
NOW OR FORMERLY
JEROME & EVELYN RANDOLPH
(D.B. 30, PG. 470)
ZONE: RM-2

T.P. 372-(OA)-00-030
NOW OR FORMERLY
JEROME & EVELYN RANDOLPH
(D.B. 37, PG. 379)
ZONE: RM-2

T.P. 372-(05)-00-001
NOW OR FORMERLY
CHESAPEAKE MEDIA, INC.
(D.B. 74, PG. 121)
(M.B. 42, PG. 25)
ZONE: B-2 CONDITIONAL

MATCH LINE
SEE SHEET 3
40' R/W
ROLAND STREET

MATCH LINE
SEE SHEET 3

PHASE 6
SEE SHEET 3

ADDITIONAL LAND

RECREATION AREA

PEDESTRIAN SD'WK.

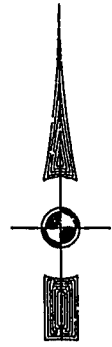
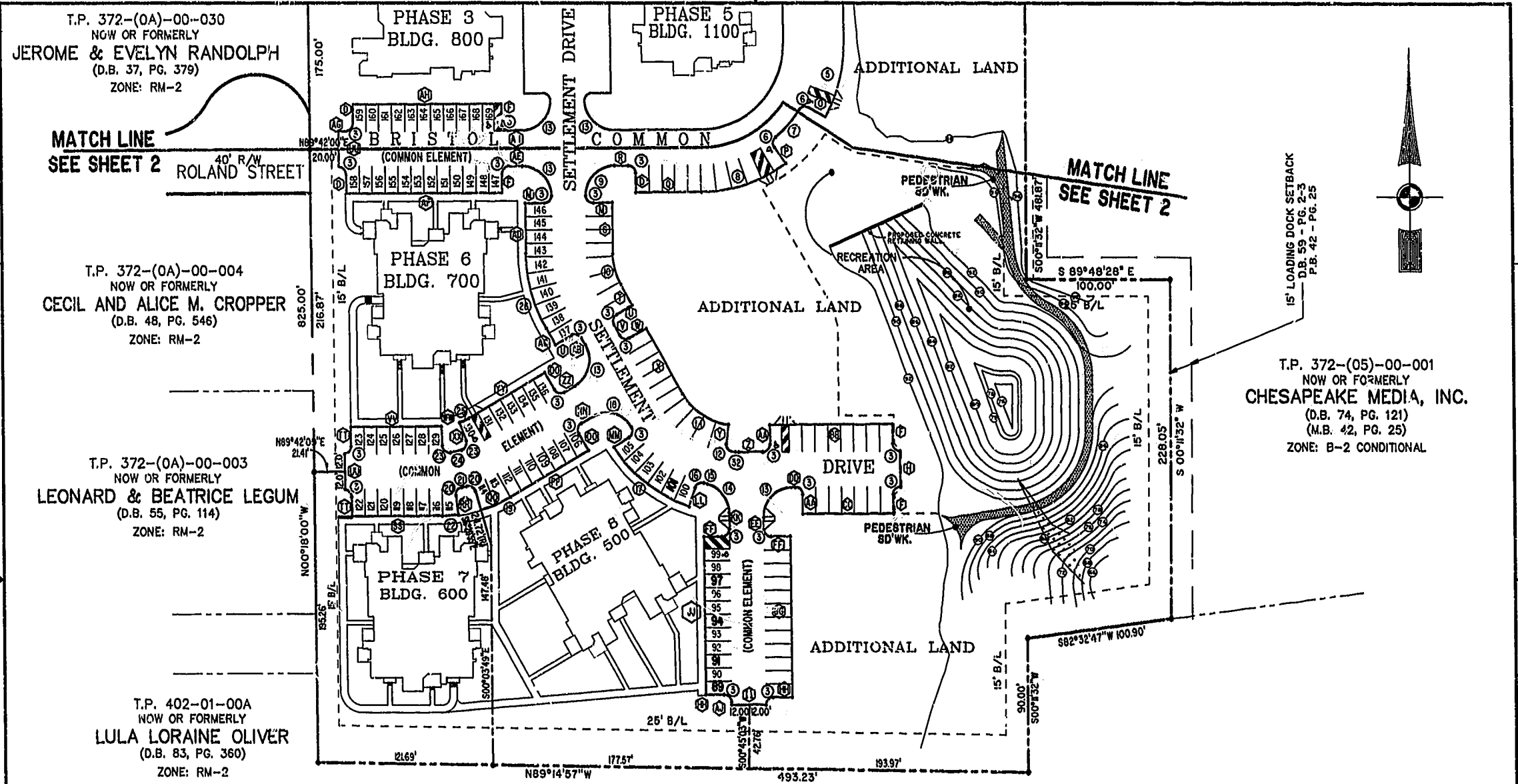
BRISTOL COMMONS
A CONDOMINIUM COMMUNITY
PHASE TWELVE

FOR
KEY GROUP, LLC

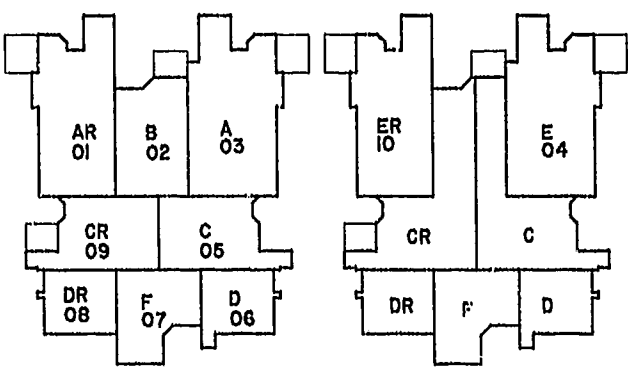
CITY OF WILLIAMSBURG, VIRGINIA

City of Williamsburg & County of James City
Circuit Court: This PLAT was recorded on
90 Aug 2001
at 2:53 PM, PB 23, PG 14-17
DOCUMENT # 011341
BETSY B. WOOLRIDGE, CLERK
Betsy Woolridge, Dep. Clerk

Hassell & Folkes, P.C. Engineers Surveyors Planners Chesapeake, VA 23320 (757)547-9531	SIZE	CONTRACT NO	DISK/BOX	FILENAME	REV.
	C	98062	123J/15	BRISTOL12.DWG	
SCALE: 1"=50'		DATE: 08/20/01	SHEET 2 of 4		



(FIRST FLOOR) (SECOND FLOOR)



TYPICAL CONDOMINIUM LAYOUT

T.P. 372-(04)-00-00-A2
 NOW OR FORMERLY
 CITY OF WILLIAMSBURG
 (D.B. 121, PG. 321)
 (M.B. 36, PG. 77)

City of Williamsburg & County of James City
 Circuit Court: This PLAT was recorded on
 30 Aug 2001
 at 2:53 PM, PB 83 PG 14-17
 DOCUMENT # 211341
 BETSY B. WOOLRIDGE, CLERK
Betsy Woolridge Dep. Clerk



BRISTOL COMMONS
 A CONDOMINIUM COMMUNITY
 PHASE TWELVE
 FOR
 KEY GROUP, LLC
 CITY OF WILLIAMSBURG, VIRGINIA

Hassell & Polkes, P.C. Engineers Surveyors Planners Chesapeake, VA 23320 (757)547-9831	SIZE C	CONTRACT NO 90062	DISK/BOX 123J/15	FILENAME BRISTOL12.DWG	REV.
SCALE: 1" = 50'			DATE: 08/20/01	SHEET 3 of 4	

COMMON AREA COURSE DATA
(PARKING)

Nº	BEARING	DISTANCE
A	S05°33'24"E	33.84'
B	S06°44'34"W	83.49'
C	N89°42'00"E	5.2'
D	N00°18'00"W	13.00'
E	N89°42'00"E	97.00'
F	S00°18'00"E	13.00'
G	N89°42'00"E	3.00'
H	S00°18'00"E	24.00'
I	S00°18'00"E	13.00'
J	S89°42'00"W	99.00'
K	N00°18'00"W	13.00'
L	S89°42'00"W	14.00'
M	N89°42'00"E	13.00'
N	S00°18'00"E	60.13'
O	N60°20'44"W	13.14'
P	S36°19'37"E	13.14'
Q	S89°42'00"W	45.44'
R	S89°42'00"W	10.00'
S	S00°18'00"E	33.91'
T	S30°00'00"E	16.32'
U	S60°00'00"W	13.00'
V	S30°00'00"E	8.00'
W	N60°00'00"E	13.00'
X	S30°00'00"E	50.83'
Y	S06°33'36"W	12.77'
Z	N89°42'00"E	18.81'
AA	N00°18'00"W	13.00'
BB	N89°42'00"E	85.00'
CC	S89°42'00"W	63.00'
DD	S89°42'00"W	2.00'
EE	S00°18'00"E	8.00'
FF	N89°42'00"E	13.00'
GG	S00°18'00"E	08.00'
HH	S89°42'00"W	15.00'
II	S89°42'00"W	24.00'
JJ	N00°18'00"W	106.00'
KK	N00°18'00"W	11.0'
LL	S18°39'10"W	13.14'
MM	N58°53'54"E	12.86'
NN	S60°00'00"W	9.00'
OO	S30°00'00"E	13.00'
PP	S60°00'00"W	62.42'
QQ	N6°20'55"W	13.15'
RR	S07°16'42"E	13.15'
SS	S89°42'00"W	62.60'
TT	N00°18'00"W	13.00'
UU	N00°18'00"W	24.00'
VV	N89°42'00"E	63.00'
WW	S0°05'44"E	12.74'
XX	N22°42'13"W	12.74'
YY	N60°00'00"E	62.42'
ZZ	N60°00'00"E	9.00'
AB	N30°00'00"W	5.60'
AC	N30°00'00"W	12.95'
AD	N00°18'00"W	33.91'

COMMON AREA CURVE DATA
(PARKING)

Nº	BEARING	DISTANCE
AE	S89°42'00"W	9.00'
AF	S89°42'00"W	108.00'
AG	N89°42'00"E	5.00'
AH	N89°42'00"E	103.00'
AI	N89°42'00"E	9.00'
AJ	N00°18'00"W	2.00'
AK	N89°42'00"E	24.00'
AL	N00°18'00"W	99.00'
AM	S00°18'00"E	85.00'
AN	S00°18'00"E	3.00'
AO	S00°18'00"E	8.00'
AP	N89°42'00"E	60.44'
AQ	N00°18'00"W	83.36'
AR	N05°33'24"W	167.81'
AS	S89°42'00"W	8.96'

Nº	DELTA	RADIUS	LENGTH	TANGENT
1	12°17'58"	190.00'	32.20'	16.16'
2	97°02'53"	10.00'	16.94'	11.31'
3	90°00'00"	5.00'	7.85'	5.00'
4	180°00'00"	5.00'	15.71'	-----
5	29°57'55"	135.00'	52.28'	26.78'
6	86°42'19"	5.00'	7.57'	4.72'
7	77°25'45"	82.00'	24.94'	12.57'
8	36°07'38"	100.00'	62.88'	32.52'
9	90°00'00"	20.00'	31.42'	20.00'
10	29°42'00"	42.00'	21.77'	11.4'
11	53°26'24"	42.00'	39.17'	21.14'
12	55°12'57"	5.00'	8.31'	5.18'
13	90°00'00"	20.00'	31.42'	20.00'
14	75°59'06"	20.00'	26.52'	15.62'
15	0°43'02"	84.00'	1.51'	1.26'
16	86°46'46"	5.00'	7.57'	4.73'
17	37°26'09"	102.00'	66.64'	24.56'
18	88°53'54"	20.00'	31.03'	19.62'
19	13°39'05"	96.00'	22.87'	11.49'
20	86°32'47"	5.00'	7.55'	4.71'
21	02°09'47"	78.00'	2.94'	1.47'
22	06°58'42"	96.00'	11.69'	5.85'
23	95°51'24"	5.00'	8.37'	5.54'
24	09°53'41"	54.00'	9.33'	4.67'
25	07°17'47"	36.00'	4.58'	2.30'
26	29°42'00"	102.00'	52.87'	27.04'
27	82°20'07"	5.00'	7.19'	4.37'
28	98°10'38"	20.00'	34.27'	23.08'
29	84°16'52"	20.00'	29.42'	19.10'
30	10°26'59"	5.00'	8.85'	6.1'
31	90°00'00"	58.00'	91.1'	58.00'
32	0°38'39"	60.00'	1.72'	0.86'

CHORD = N39°34'30"W 7.74'

City of Williamsburg & County of James City
Circuit Court; This PLAT was recorded on
30 Aug 2001
at 2:53 PM, PB 23, PG 14-17
DOCUMENT # 011341
BETSY B. WOOLRIDGE, CLERK
Betsy B. Woolridge Dep. Clerk



BRISTOL COMMONS
A CONDOMINIUM COMMUNITY
PHASE TWELVE
FOR
KEY GROUP, LLC
CITY OF WILLIAMSBURG, VIRGINIA

Hassell & Folkes, P.C. Engineers Surveyors Planners Chesapeake, VA 23320 (757) 547-9531	SIZE: C	CONTRACT NO: 98062	DISK/BOX: 123J/15	FILENAME: BRISTOL12.DWG	REV.
SCALE: N/A		DATE: 08/20/01		SHEET 4 of 4	