

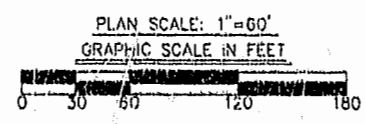
City of Williamsburg & County of James City
Circuit Court: This PLAT was recorded on
December 26, 2001
at 2:50 AM PM, PG 84 of 44
DOCUMENT # 010024124
BETSY B. WOOLRIDGE, CLERK
Betsy Woolridge, Dep. Clerk

SUBDIVISION PLAT
OF
POWHATAN OF WILLIAMSBURG SECONDARY
PHASE VI--A
BERKELEY DISTRICT
JAMES CITY COUNTY, VIRGINIA
SCALE: 1"=60' DATE: 6/19/2001
SHEET 3 OF 4

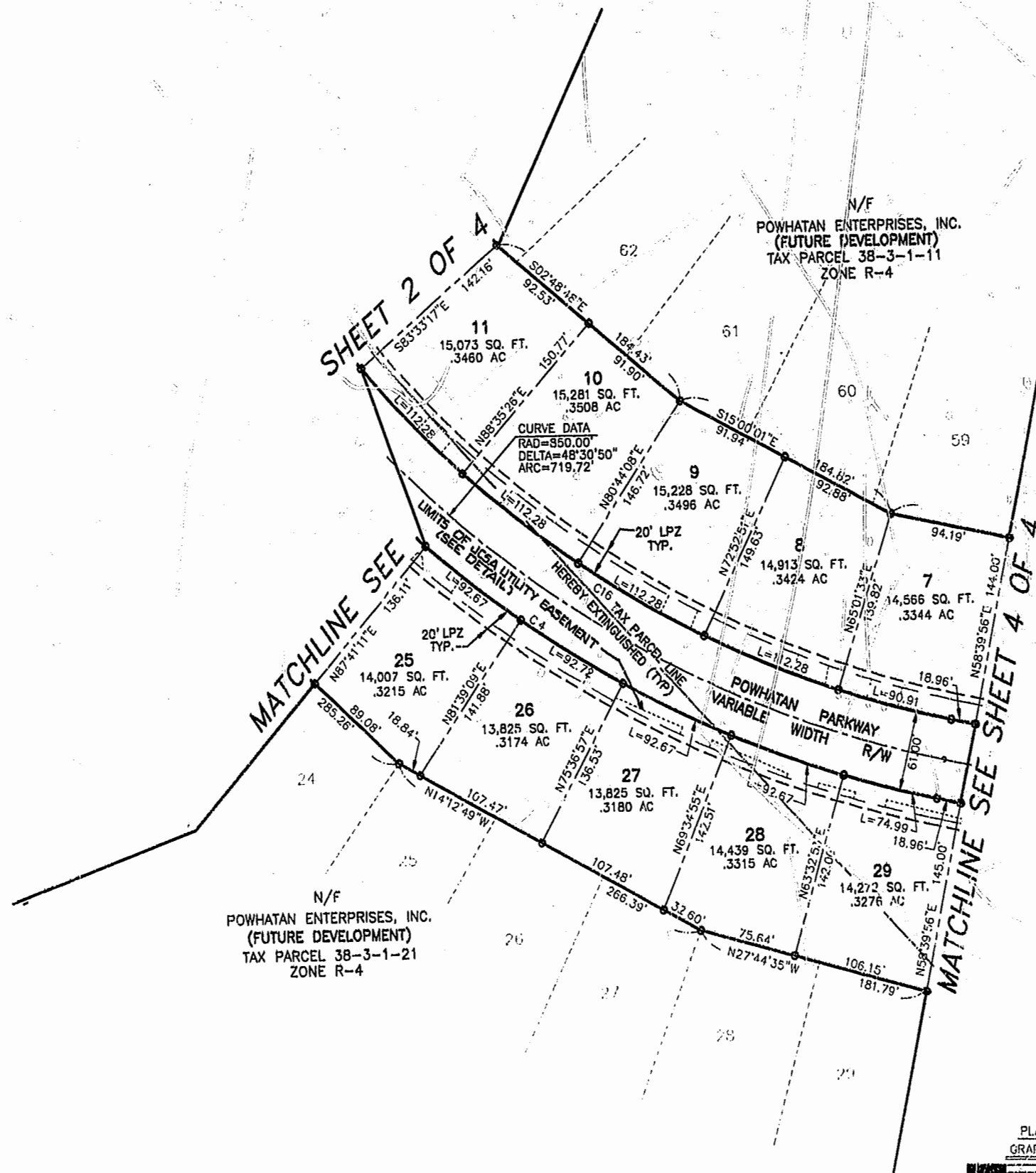


Engineers • Planners • Surveyors
Landscape Architects • Environmental Consultants

4029 IRONBOUND ROAD, SUITE 100
WILLIAMSBURG, VA 23185
TEL (757) 253-2975 FAX (757) 229-0049



PLAN SCALE: 1"=60'
GRAPHIC SCALE IN FEET



N/F
POWHATAN ENTERPRISES, INC.
(FUTURE DEVELOPMENT)
TAX PARCEL 38-3-1-21
ZONE R-4

N/F
POWHATAN ENTERPRISES, INC.
(FUTURE DEVELOPMENT)
TAX PARCEL 38-3-1-11
ZONE R-4

SHEET 2 OF 4

MATCHLINE SEE SHEET 4 OF 4

MATCHLINE SEE SHEET 2 OF 4