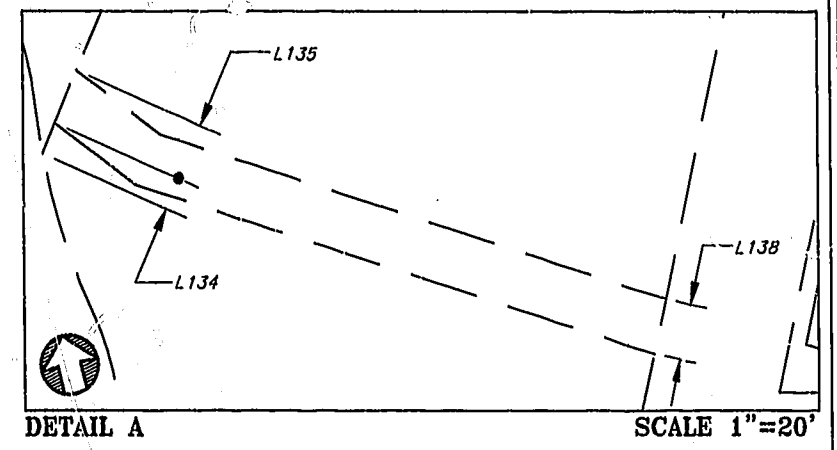


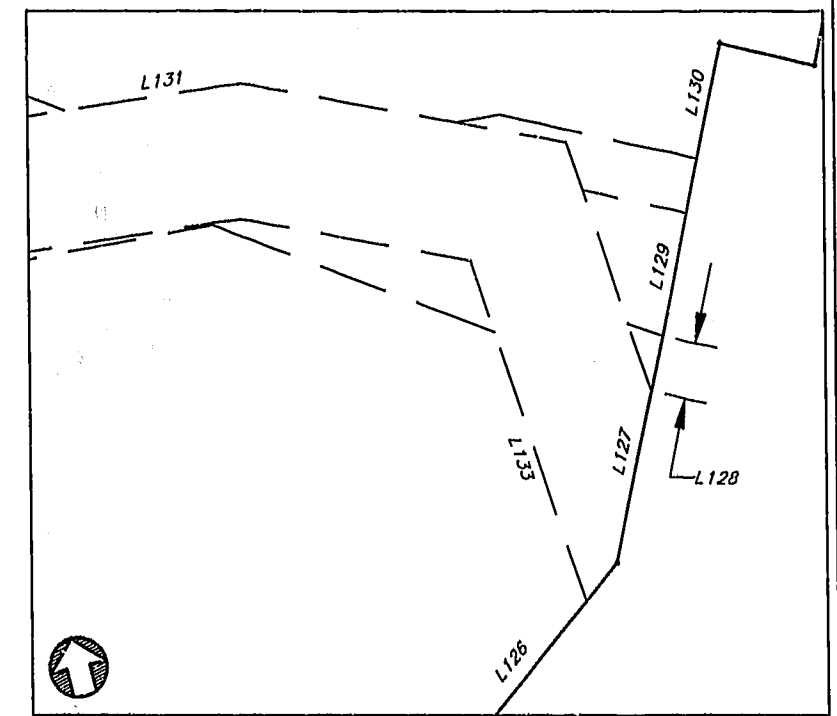
LINE TABLE		
NUMBER	DIRECTION	DISTANCE
L1	N 48°40'6" E	75.98'
L2	N 46°16'6" W	190.77'
L3	N 15°58'30" E	341.40'
L4	N 40°42'3" E	85.81'
L5	N 15°51'37" W	52.15'
L6	N 8°36'58" E	92.70'
L7	N 77°37'46" W	99.46'
L8	N 48°40'6" E	46.75'
L9	N 46°16'6" W	147.16'
L10	N 25°58'30" E	181.44'
L11	N 26°2'16" E	166.83'
L12	N 40°42'3" E	37.62'
L13	N 15°51'37" W	44.45'
L14	N 8°36'58" E	75.43'
L15	N 77°37'46" W	83.26'
L16	S 75°21'49" E	89.24'
L17	S 84°48'35" E	160.17'
L18	S 66°26'17" E	61.24'
L19	S 5°17'2" E	47.20'
L20	S 75°21'49" E	95.87'
L21	S 84°48'35" E	158.27'
L22	S 66°26'17" E	43.18'
L23	S 5°17'2" E	64.69'
L24	S 75°21'49" E	130.72'
L25	S 75°21'49" E	135.52'
L26	S 51°42'48" W	40.12'
L27	S 38°17'12" E	36.70'
L28	S 51°42'48" W	29.86'
L29	S 38°17'12" E	26.17'
L30	S 38°17'12" E	44.19'
L31	S 6°12'34" W	8.95'
L32	S 25°55'26" W	123.10'
L33	S 58°46'49" E	10.43'
L34	S 81°40'43" E	185.86'
L35	S 56°12'31" E	15.88'
L36	S 86°34'34" E	7.84'
L37	S 64°11'45" E	37.42'
L38	S 64°11'45" E	19.58'
L39	S 56°12'31" E	6.69'
L40	S 86°34'34" E	26.05'
L41	S 45°45'45" E	153.72'
L42	S 56°12'31" E	55.57'
L43	S 25°55'26" W	147.74'
L44	S 42°27'3" E	13.86'
L45	S 64°4'34" E	56.64'
L46	S 84°35'21" E	32.07'
L47	S 84°35'21" E	31.37'
L48	S 42°27'3" E	44.77'
L49	S 42°27'3" E	62.04'
L50	S 30°57'23" W	259.60'
L51	S 30°57'23" W	246.86'
L52	S 74°47'40" E	193.29'
L53	S 74°47'40" E	206.71'
L54	S 77°16'22" E	179.79'
L55	S 77°16'22" E	180.21'
L56	S 79°40'30" E	164.14'
L57	S 79°40'30" E	168.31'
L58	N 57°4'46" E	66.93'
L59	N 57°4'46" E	80.75'
L60	S 21°32'19" E	107.87'
L61	S 21°32'19" E	106.14'
L62	S 84°35'21" E	3.77'
L63	N 57°4'46" E	49.79'
L64	S 84°35'21" E	6.65'
L65	S 39°42'5" E	19.21'
L66	S 39°42'5" E	18.57'
L67	S 58°46'49" E	97.81'
L68	S 58°46'49" E	100.41'
L69	S 40°18'44" E	84.06'
L70	S 55°18'53" E	82.70'
L71	S 10°18'53" E	22.38'
L72	S 56°15'57" W	54.72'
L73	N 76°16'57" W	137.19'
L74	N 81°04'11" W	119.83'
L75	N 76°16'57" W	33.85'
L76	S 25°51'50" W	113.97'
L77	N 63°44'30" W	18.01'
L78	S 25°38'10" W	95.11'

LINE TABLE (CONT.)		
NUMBER	DIRECTION	DISTANCE
L79	S 53°46'11" W	49.70'
L80	S 85°7'25" W	205.22'
L81	S 14°27'16" W	221.7'
L82	S 37°16'49" W	64.05'
L83	S 36°16'11" W	46.00'
L84	S 53°43'49" E	18.00'
L85	S 36°16'11" W	80.36'
L86	S 8°42'49" W	66.61'
L87	S 37°22'33" E	45.35'
L88	S 37°22'33" E	20.00'
L89	S 37°22'33" E	107.62'
L90	S 40°18'44" E	71.50'
L91	S 63°42'23" E	112.00'
L92	S 32°29'13" E	155.47'
L93	N 52°03'29" E	339.77'
L94	N 60°55'05" E	195.04'
L95	N 52°33'59" E	52.28'
L96	S 52°33'59" W	53.72'
L97	S 60°55'05" W	194.96'
L98	S 52°03'29" W	360.23'
L99	N 32°29'13" W	173.05'
L100	N 75°50'02" E	38.87'
L101	N 61°23'54" E	100.86'
L102	S 46°05'37" E	254.79'
L103	N 46°05'37" W	252.27'
L104	S 61°23'54" W	88.73'
L105	S 75°50'02" W	50.83'
L106	N 77°24'43" W	14.65'
L107	S 69°59'11" W	19.50'
L108	N 66°58'29" W	22.15'
L109	N 75°42'59" W	104.59'
L110	S 71°07'17" W	26.61'
L111	S 37°12'05" W	145.29'
L112	N 37°12'05" E	125.96'
L113	N 71°07'17" E	38.66'
L114	S 75°42'59" E	112.08'
L115	S 66°58'29" E	12.36'
L116	S 40°54'09" E	44.93'
L117	N 22°48'46" W	77.72'
L118	N 44°37'27" W	78.90'
L119	N 78°18'37" W	160.87'
L120	N 78°18'37" W	263.09'
L121	S 8°42'49" W	57.91'
L122	S 36°16'11" W	16.75'
L123	S 37°16'49" W	26.35'
L124	S 37°16'49" W	25.84'
L125	S 14°27'16" W	16.87'
L126	S 53°46'11" W	40.55'
L127	S 25°38'10" W	31.44'
L128	S 25°38'10" W	10.10'
L129	S 25°38'10" W	22.53'
L130	S 25°38'10" W	21.04'
L131	S 84°48'35" E	32.93'
L132	S 75°21'49" E	67.39'
L133	S 5°17'2" E	51.16'
L134	N 37°12'5" E	5.88'
L135	N 37°12'5" E	10.27'
L136	N 37°12'5" E	129.14'
L137	N 25°58'30" E	341.40'
L138	N 25°58'30" E	10.04'
L139	N 40°42'3" E	7.79'
L140	N 40°42'3" E	50.08'
L141	S 36°57'16" W	120.43'
L142	S 36°57'16" W	11.73'
L143	S 36°57'16" W	97.13'
L144	N 40°42'3" E	32.03'
L145	S 75°21'13" E	40.88'
L146	S 75°21'13" E	24.67'
L147	S 75°21'13" E	3.06'
L148	N 32°29'13" W	163.84'
L149	S 52°3'29" W	179.17'
L150	N 48°40'6" E	45.25'
L151	N 48°40'6" E	10.01'
L152	N 48°40'6" E	20.72'
L153	N 46°16'6" W	103.72'
L154	N 46°16'6" W	37.35'
L155	N 46°16'6" W	7.01'
L156	N 25°58'30" E	6.44'

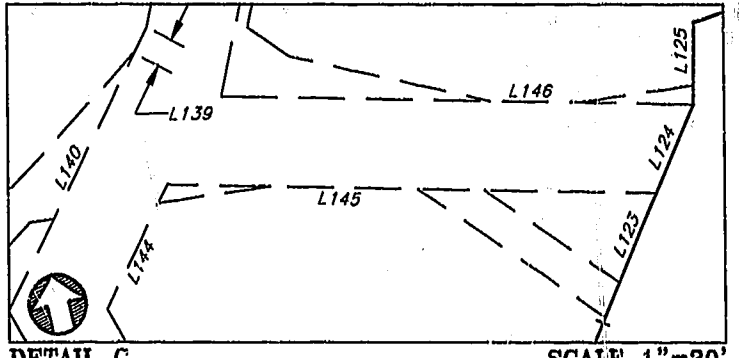
CURVE TABLE						
NUMBER	RADIUS	DELTA	LENGTH	TANGENT	CHORD BEARING	CHORD
C1	50.00'	87°00'52"	75.93'	47.46'	S 77°49'37" E	68.84'
C2	910.00'	03°03'22"	48.54'	24.27'	S 35°50'52" E	48.53'
C3	925.00'	10°33'02"	170.33'	85.41'	S 42°39'04" E	170.09'
C4	925.00'	07°57'36"	128.51'	64.36'	S 64°42'37" E	128.40'
C5	840.00'	13°22'32"	196.09'	98.49'	S 62°00'09" E	195.65'
C6	788.94'	19°46'00"	272.18'	137.46'	S 23°36'03" W	270.83'
C7	8182.56'	01°47'43"	256.39'	128.20'	N 77°10'49" W	256.38'
C8	1006.74'	06°48'30"	119.63'	59.88'	N 74°40'25" W	119.56'
C9	61.50'	20°45'54"	22.29'	11.21'	S 33°59'05" W	22.17'
C10	61.50'	21°56'01"	23.54'	11.92'	S 12°38'08" W	23.40'
C11	61.50'	46°17'34"	49.69'	26.29'	S 21°28'40" E	48.35'
C12	61.50'	26°41'30"	28.65'	14.59'	S 27°33'24" E	28.39'
C13	61.50'	21°26'50"	23.02'	11.65'	N 03°29'13" W	22.89'
C14	124.02'	04°24'30"	9.54'	4.77'	N 05°01'57" E	9.54'
C15	124.02'	13°39'14"	29.56'	14.85'	S 03°59'55" E	29.48'
C16	51.50'	46°57'06"	42.20'	22.37'	N 67°50'35" E	41.03'
C17	31.50'	90°01'38"	49.50'	31.52'	S 43°40'03" E	44.56'
C18	28.50'	41°25'05"	20.60'	10.77'	S 19°21'47" E	20.16'
C19	51.50'	29°26'47"	26.47'	13.53'	S 25°20'57" E	26.18'
C20	14.50'	60°32'15"	15.32'	8.46'	S 40°53'41" E	14.62'
C21	51.50'	30°15'39"	27.20'	13.93'	S 56°01'59" E	26.89'
C22	61.50'	48°08'20"	51.67'	27.47'	S 16°49'59" E	50.17'
C23	124.02'	18°03'44"	39.10'	19.71'	S 01°47'40" E	38.94'
C24	50.98'	47°46'49"	50.85'	27.01'	S 13°03'52" W	49.39'
C25	35.80'	162°25'41"	101.49'	231.63'	N 61°49'54" W	70.76'
C26	12.50'	42°11'43"	9.21'	4.82'	N 01°42'55" W	9.00'
C27	46.40'	21°48'41"	17.66'	8.94'	N 33°43'07" W	17.56'
C28	61.50'	88°59'29"	95.52'	60.43'	N 00°07'42" W	86.21'
C29	840'	9°29'53"	139.25'	69.78'	S 60°03'50" E	139.09'
C30	840'	3°52'39"	56.85'	28.43'	S 66°45'06" E	56.83'
C31	925'	4°49'57"	78.02'	39.03'	S 45°30'37" E	78.00'
C32	925'	3°38'42"	58.85'	28.43'	S 41°16'18" E	58.84'



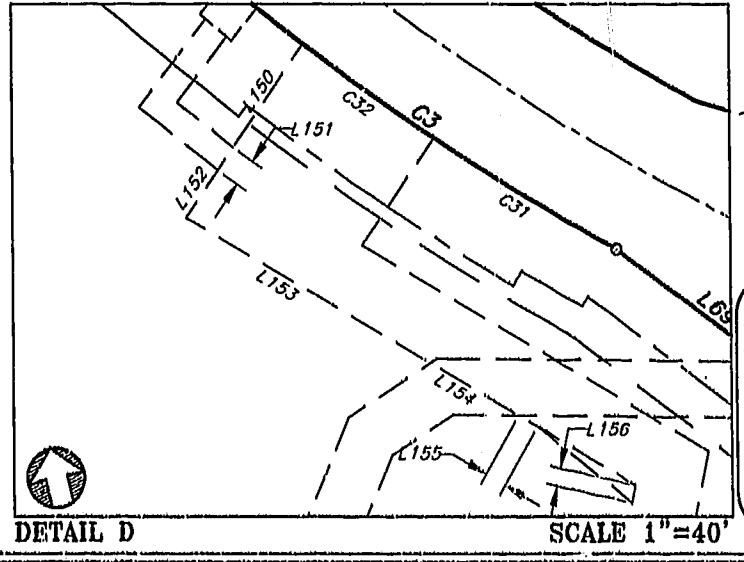
DETAIL A SCALE 1"=20'



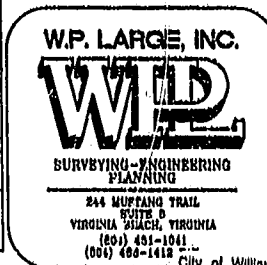
DETAIL B SCALE 1"=20'



DETAIL C SCALE 1"=30'



DETAIL D SCALE 1"=40'



SEE SHEET 1 OF 6 FOR NOTES AND CERTIFICATIONS

SHEET 6 OF 6
SUBDIVISION
 OF
MONTICELLO AT POWHATAN APARTMENTS
PARCEL A
AREA DESIGNATION D
21.7638 ACRES TOTAL

AS SHOWN ON
 SUBDIVISION PLAT
 APARTMENT PARCEL NORTH SIDE OF NEWS ROAD
 POWHATAN OF WILLIAMSBURG SECONDARY
 BERKELEY DISTRICT - JAMES CITY COUNTY, VA.
 PLAT RECORDED IN M.B. 74, PG. 6, IN THE CLERK'S OFFICE OF
 THE CIRCUIT COURT, OF JAMES CITY COUNTY, VIRGINIA

DATE: DECEMBER 13, 2001

City of Williamsburg & County of James City Circuit Court: This PLAT was recorded on December 31, 2001

at 215 AMERICAN BLDG. PG 87-88

DOCUMENT # 2010024015 BETSY B. WOOLRIDGE, CLERK