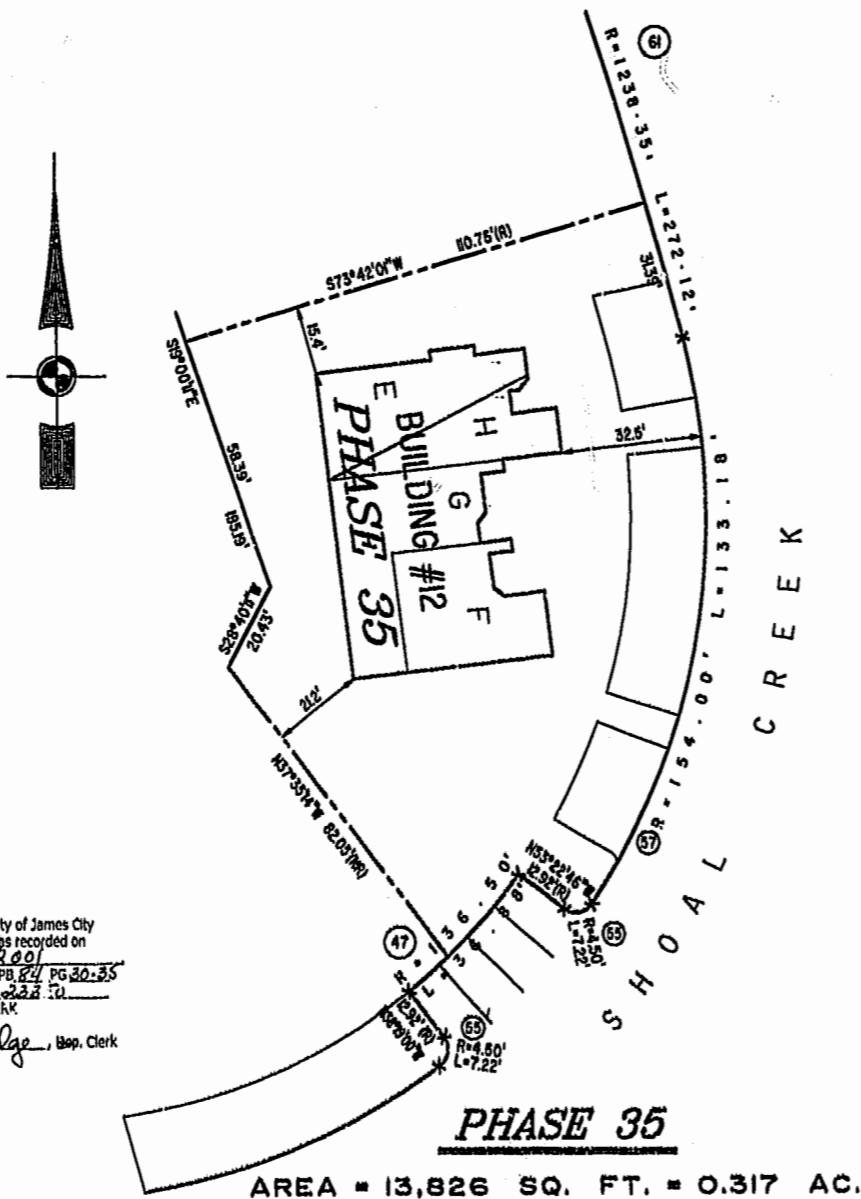
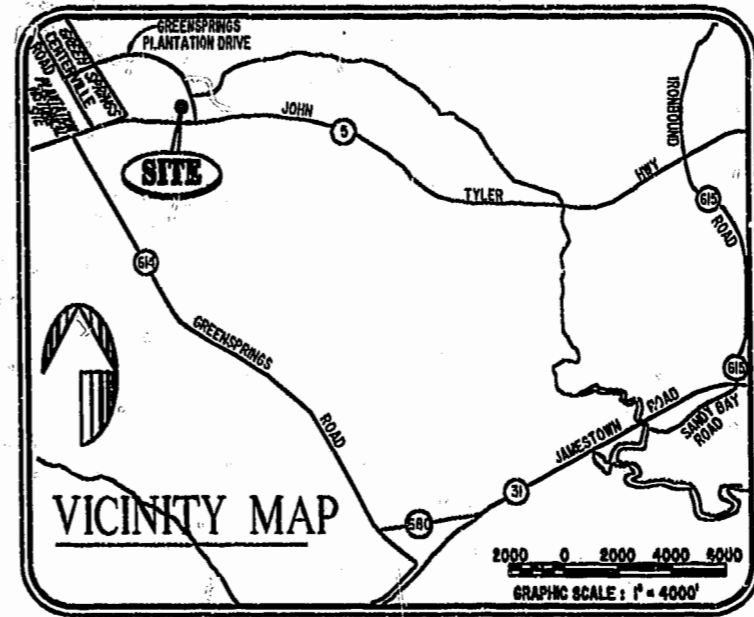


BUILDING NUMBER	UNIT NUMBER	UNIT TYPE	STREET ADDRESS
12	12-215	E	215 SHOAL CREEK
12	12-217	H	217 SHOAL CREEK
12	12-219	G	219 SHOAL CREEK
12	12-221	F	221 SHOAL CREEK

NOTES:

1. THE TOTAL AREA OF SITE IS 1,222,568 SQ.FT. (28.07 AC.) OF WHICH 145,280 SQ.FT. (3.335 AC.) IS ADDITIONAL LAND.
2. THE AREA OF THE SUBMITTED LAND IS 1,077,288 SQ.FT. (24.731 AC.)
3. THE COMMON AREA IS TO BE THE RESPONSIBILITY OF THE CONDOMINIUM ASSOCIATION AND HAS A TOTAL AREA OF 16.43 AC.



I CHRISTOPHER D. CAPOZZI, A CERTIFIED LAND SURVEYOR, DO HEREBY CERTIFY THAT THIS PLAT IS ACCURATE, AND THAT IT COMPLIES WITH THE PROVISIONS OF SECTION 55 - 79.58A OF THE CODE OF VIRGINIA. I FURTHER HEREBY CERTIFY THAT ALL UNITS OR PORTIONS THEREOF DEPICTED HEREON HAVE BEEN SUBSTANTIALLY COMPLETED.

THE UNDERSIGNED CERTIFIED LAND SURVEYOR CERTIFIES THAT HE HAS READ SECTION 55 - 79.58B OF THE CODE OF VIRGINIA, AND FINDS THIS PLAT TO BE ACCURATE AND IN COMPLIANCE WITH THE CODE. I FURTHER CERTIFY THAT ALL UNITS OR PORTIONS THEREOF DEPICTED HEREON HAVE BEEN SUBSTANTIALLY COMPLETED.

12-6-01
DATE

CS
LAND SURVEYOR No. 002398

City of Williamsburg & County of James City
Circuit Court: This PLAT was recorded on
14 Dec 2001
at 3:02 PM, PG 30-35
DOCUMENT # 010023350
BETSY B. WOOLRIDGE, CLERK
Betsy B. Woolridge, Dep. Clerk

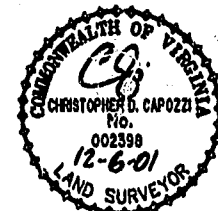


Hassell & Folkes, P.C.
Engineers Surveyors Planners
325 Volvo Parkway
Chesapeake, VA 23320
(757) 547-9531

DRAWN BY:	DATE
HJS	11/28/01
COMP BY:	DATE
HF	
CHECKED BY:	DATE
HBA	11/30/01

EXHIBIT 'A' PHASE 35			
FAIRWAYS VILLAS			
AT GREENSPRINGS, A CONDOMINIUM			
FOR GREENSPRINGS DEVELOPMENT, L.C.			
BERKELEY DISTRICT		JAMES CITY COUNTY, VIRGINIA	
SIZE	CONTRACT	DISK/BOX	FILENAME
C	98-079	6AF/18	FAIRWAY35.DWG
		REF: 18/13	FWAYPLAT.DWG
SCALE: 1" = 20'	DATE: 12/06/01	SHEET 1 of 6	

46-1-01-0-0001
"GREENSPRINGS PLANTATION"
(DB-322, PG 254)

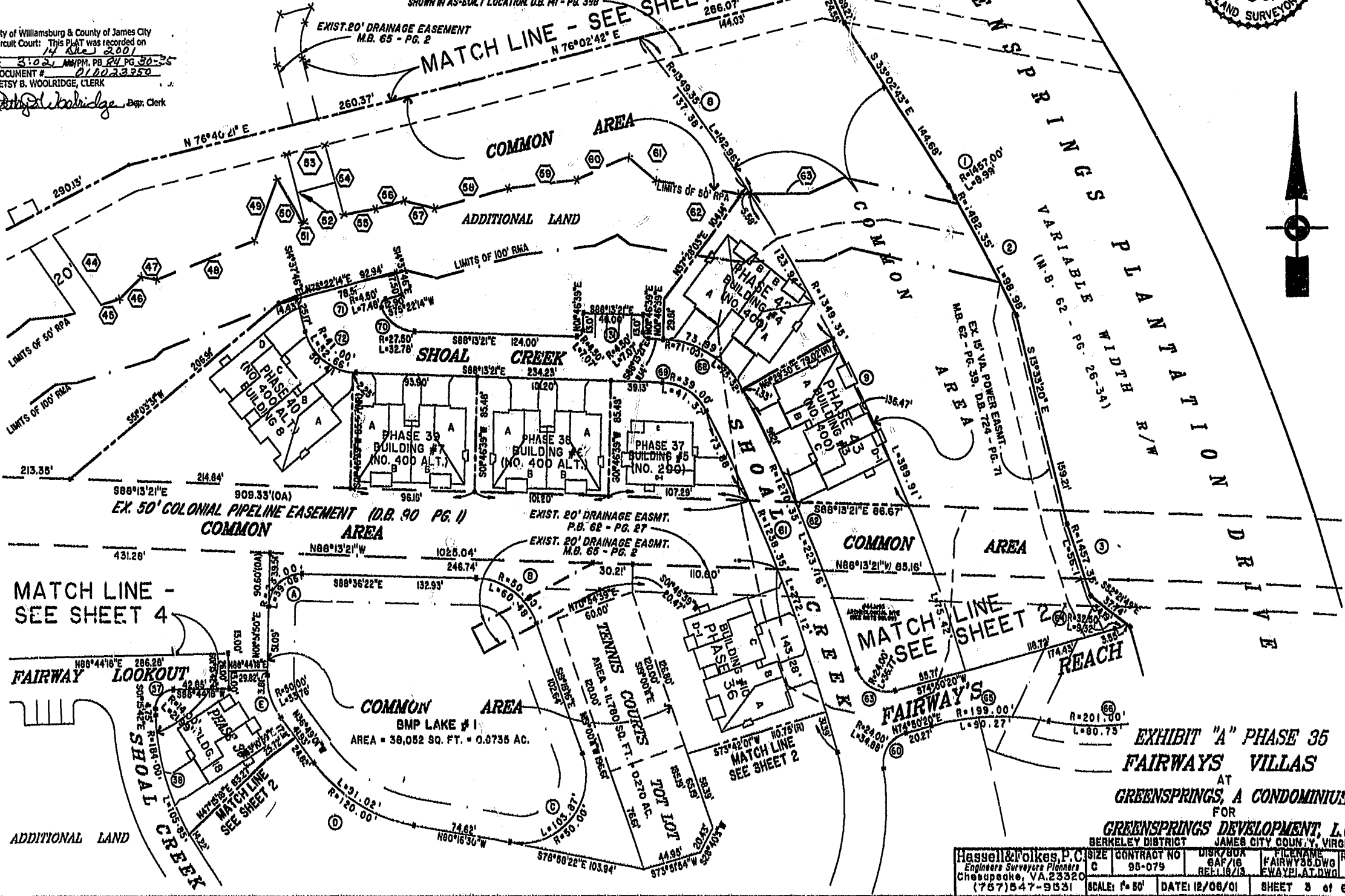


City of Williamsburg & County of James City
Circuit Court: This PLAT was recorded on
14 Dec 2001
at 3:02 PM, PB 89 PG 30-35
DOCUMENT # 010023350
BETSY B. WOOLRIDGE, CLERK
Betsy Woolridge Dep. Clerk

EXIST. 20' JAMES CITY COUNTY SERVICE
AUTHORITY SAN. SEWER EASEMENT AS
SHOWN IN AS-BUILT LOCATION, D.B. #1 - PG. 398

EXIST. 20' DRAINAGE EASEMENT
M.B. 65 - PG. 2

MATCH LINE - SEE SHEET 5



EX. 50' COLONIAL PIPELINE EASEMENT (D.B. 90 PG. 1)
COMMON AREA

EXIST. 20' DRAINAGE EASMT.
P.B. 62 - PG. 27
EXIST. 20' DRAINAGE EASMT.
M.B. 65 - PG. 2

MATCH LINE -
SEE SHEET 4

MATCH LINE
SEE SHEET 2

COMMON AREA
BMP LAKE #1
AREA = 38,052 SQ. FT. = 0.8735 AC.

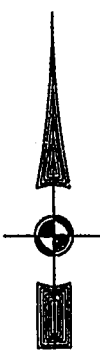
EXHIBIT "A" PHASE 35
FAIRWAYS VILLAS
AT
GREENSPRINGS, A CONDOMINIUM
FOR
GREENSPRINGS DEVELOPMENT, L.C.
BERKELEY DISTRICT JAMES CITY COUNTY, VIRGINIA

Hassell & Folkes, P.C. Engineers Surveyors Planners Chesapeake, VA 23320 (757)547-9931	CONTRACT NO 95-079	DISK/BOK BAF/16 REL: 10/19	FILENAME FAIRWY35.DWG FWAYPLAT.DWG	REV.
SCALE: 1"=50'	DATE: 12/06/01	SHEET 3 of 6		

#010023350

84 PAGE 33

EXIST. 20' JAMES CITY COUNTY SERVICE AUTHORITY SAN. SEWER EASEMENT AS SHOWN IN AS-BUILT LOCATION. D.B. 141 - PG. 388



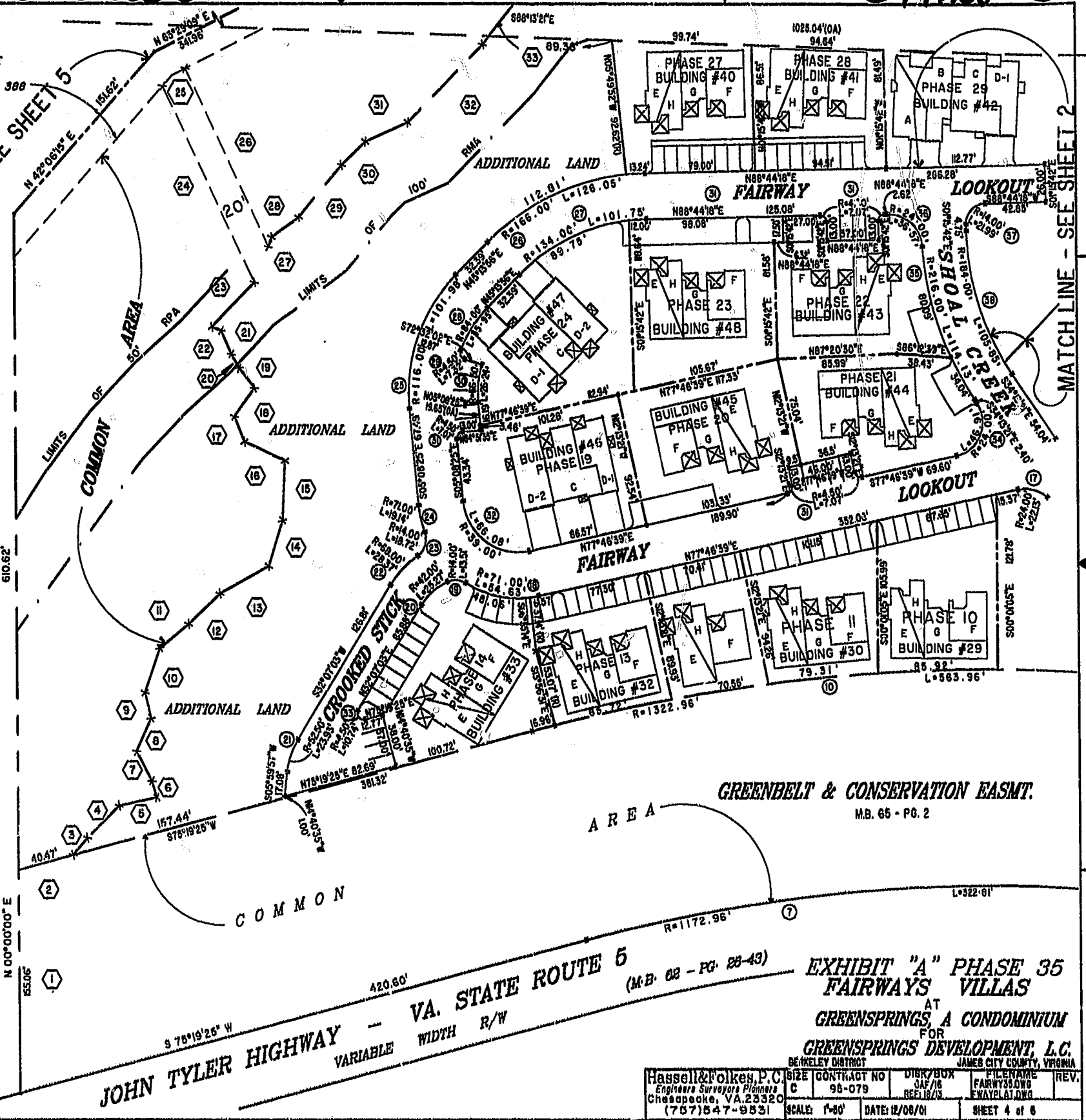
MATCH LINE - SEE SHEET 5

MATCH LINE - SEE SHEET 2

46-1-01-0-0001
"GREENSPRINGS PLANTATION"
(DB 322, PG 234)

City of Williamsburg & County of James City
Circuit Court: This PLAT was recorded on
14 (th) 2001
at 3:10 PM, PG. 24 PG. 30-35
DOCUMENT # 010023350
BETSY B. WOOLRIDGE, CLERK

Betsy Woolridge Dep. Clerk



GREENBELT & CONSERVATION EASMT.
M.B. 65 - PG. 2

VA. STATE ROUTE 6
JOHN TYLER HIGHWAY
VARIABLE WIDTH R/W

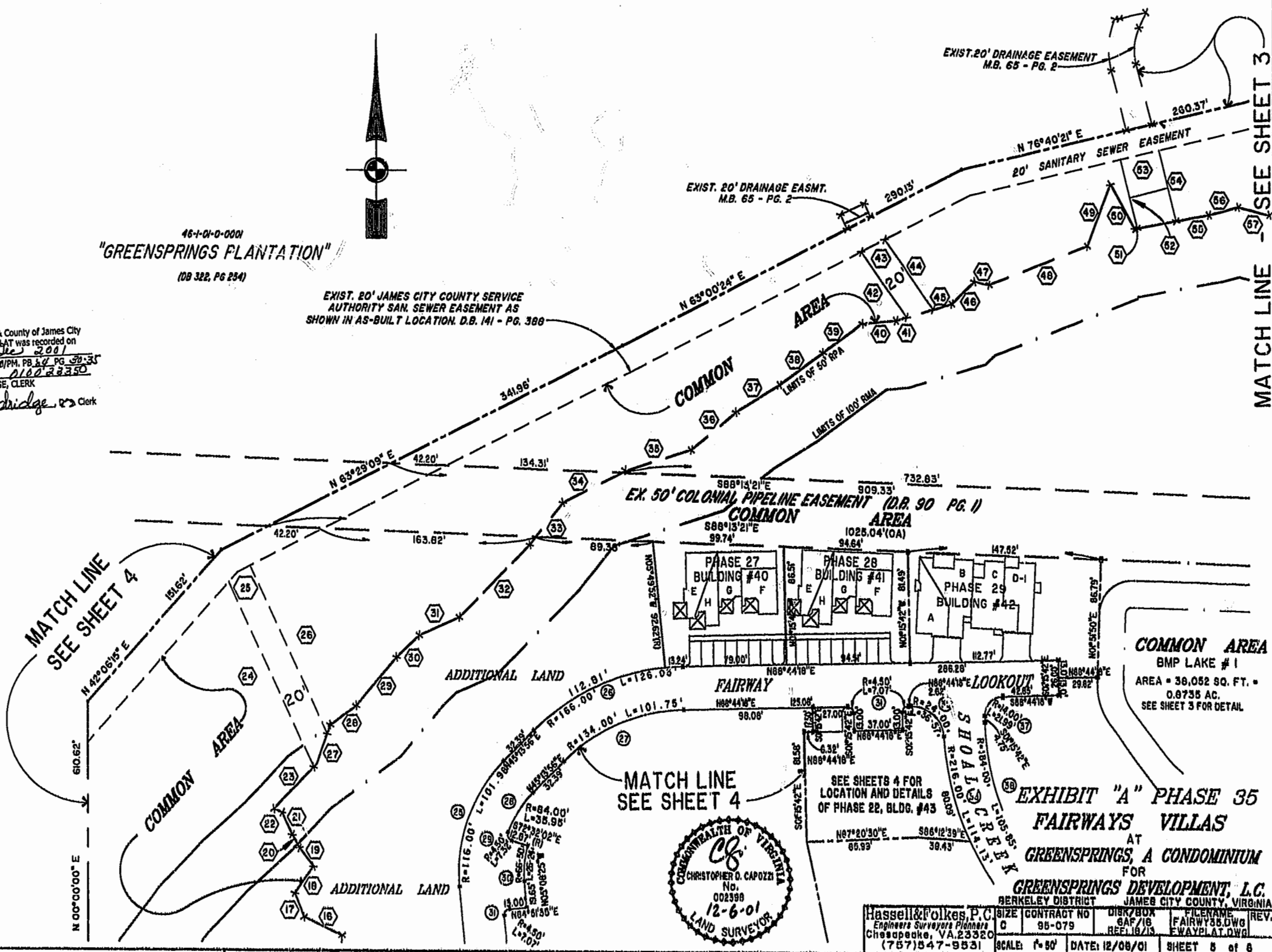
EXHIBIT "A" PHASE 35
FAIRWAYS VILLAS
AT
GREENSPRINGS, A CONDOMINIUM
FOR
GREENSPRINGS DEVELOPMENT, L.C.

Hassell & Polken, P.C. Engineers Surveyors Planners Chesapeake, VA. 23320 (757) 547-9531	SIZE C	CONTRACT NO 98-079	DIBR/BOX JAF/16 REF 18/13	FILENAME FAIRWAY35.DWG EWAYPLAT.DWG	REV.
SCALE: 1"=80'		DATE: 12/08/01		SHEET 4 of 6	

46-1-01-0-0001
"GREENSPRINGS PLANTATION"
(08 322, PG 234)

EXIST. 80' JAMES CITY COUNTY SERVICE
AUTHORITY SAN. SEWER EASEMENT AS
SHOWN IN AS-BUILT LOCATION. D.B. 141 - PG. 388

City of Williamsburg & County of James City
Circuit Court: This PLAT was recorded on
14 Dec 2001
at 3:02 PM, PB 54 PG 39-35
DOCUMENT # 010023350
BETSY B. WOOLRIDGE, CLERK
Betsy Woolridge Clerk



MATCH LINE
SEE SHEET 4

MATCH LINE - SEE SHEET 3



SEE SHEETS 4 FOR
LOCATION AND DETAILS
OF PHASE 22, BLDG. #43

EXHIBIT "A" PHASE 35
FAIRWAYS VILLAS
AT
GREENSPRINGS, A CONDOMINIUM
FOR
GREENSPRINGS DEVELOPMENT, L.C.
BERKELEY DISTRICT JAMES CITY COUNTY, VIRGINIA

Hassell & Folkes, P.C. Engineers Surveyors Planners Chesapeake, VA 23320 (757)547-9531	SIZE: C CONTRACT NO: 95-079	DISK/BOX: GAF/18 REF: 16/13	FILENAME: FAIRWAY55.DWG FWAYPLAT.DWG	REV: 1
SCALE: 1"=80'	DATE: 12/08/01	SHEET 5 of 6		

N°	BEARING	DISTANCE	N°	BEARING	DISTANCE	N°	BEARING	DISTANCE	N°	BEARING	DISTANCE
1	NORTH	155.06'	21	N24°19'39"W	18.00'	41	N74°24'07"E	8.57'	61	S80°49'30"E	28.39'
2	N75°19'25"E	40.47'	22	N68°19'39"W	7.07'	42	N35°32'25"W	59.16'	62	S81°14'26"E	64.31'
3	N40°42'39"E	15.76'	23	N44°31'02"E	43.59'	43	N63°00'24"E	20.22'	63	N89°22'10"E	8.13'
4	N46°03'27"E	32.02'	24	N25°21'31"W	150.65'	44	S35°32'25"E	63.02'			
5	N78°08'22"E	27.59'	25	N53°08'23"E	20.41'	45	N73°24'07"E	14.72'			
6	N16°44'45"W	12.04'	26	S25°21'31"E	136.97'	46	N46°21'12"E	24.05'			
7	N27°24'57"W	23.32'	27	N19°51'26"E	6.90'	47	S77°39'56"E	11.29'			
8	N24°46'40"E	25.18'	28	N53°59'32"E	24.16'	48	N58°43'48"E	80.56'			
9	N13°22'46"W	18.38'	29	N40°41'56"E	47.56'	49	N21°06'48"E	48.92'			
10	N19°16'53"E	32.76'	30	N46°49'41"E	23.74'	50	S30°15'14"E	37.69'			
11	N51°25'01"E	26.57'	31	N66°20'36"E	33.45'	51	N79°32'01"E	1.93'			
12	N46°33'07"E	31.05'	32	N44°53'19"E	76.32'	52	N14°37'46"W	52.29'			
13	N81°21'55"E	40.31'	33	N38°39'22"E	40.18'	53	N76°40'21"E	30.01'			
14	N17°35'03"E	32.98'	34	N63°44'13"E	53.14'	54	S14°37'46"E	53.80'			
15	N02°42'14"E	41.60'	35	N72°23'40"E	52.44'	55	N79°32'01"E	25.17'			
16	N65°30'46"W	31.89'	36	N50°42'36"E	43.97'	56	N74°56'18"E	22.42'			
17	N21°18'53"W	19.03'	37	N58°37'17"E	38.60'	57	S76°45'41"E	24.45'			
18	N35°55'39"E	24.19'	38	N54°09'52"E	41.40'	58	N78°14'55"E	58.28'			
19	N37°34'08"W	17.46'	39	N34°09'52"E	37.13'	59	N83°01'12"E	52.44'			
20	N29°31'19"W	11.05'	40	N04°42'43"E	25.55'	60	N66°02'13"E	42.50'			

CURVE DATA

N°	DELTA	RADIUS	LENGTH	TANGENT	CHORD	N°	DELTA	RADIUS	LENGTH	TANGENT	N°	DELTA	RADIUS	LENGTH	TANGENT
1	00°21'13"	1457.00'	8.99'	4.50'	S29°17'32"E 8.99'	36	67°18'45"	24.00'	36.57'	22.90'	71	95°17'04"	4.50'	7.48'	4.94'
2	03°49'33"	1482.35'	98.98'	49.81'	S27°33'21"E 98.98'	37	90°00'00"	14.00'	21.99'	14.00'	72	73°35'34"	41.00'	52.66'	30.67'
3	02°12'22"	1457.35'	56.11'	28.06'	S18°24'28"E 56.11'	38	32°57'39"	184.00'	105.85'	54.43'	73	02°55'47"	1270.35'	64.96'	32.49'
4	22°49'08"	1479.35'	589.16'	298.53'	S04°41'57"E 589.27'	39	46°01'46"	64.00'	67.48'	35.56'					
5	93°02'17"	30.00'	48.71'	31.63'	S53°13'44"W 43.54'	40	30°52'07"	116.00'	62.50'	32.03'					
6	07°24'18"	1380.92'	178.47'	89.36'	N85°12'21"W 175.35'	41	48°08'54"	154.00'	124.04'	65.60'					
7	15°46'06"	1172.95'	382.81'	162.43'	S83°12'28"W 321.79'	42	27°48'28"	186.00'	90.27'	46.04'					
8	06°04'13"	1349.35'	142.96'	71.55'		43	80°16'51"	14.00'	19.62'	11.81'					
9	16°33'24"	1349.35'	369.91'	196.32'		44	52°28'22"	63.00'	67.70'	31.05'					
10	24°25'28"	1322.96'	563.96'	286.33'		45	103°31'29"	31.00'	56.01'	39.34'					
						46	55°01'24"	63.00'	60.50'	32.81'					
						47	10°24'49"	136.50'	24.81'	12.44'					
16	16°57'40"	1349.35'	399.44'	201.19'		55	91°55'00"	4.50'	7.22'	4.65'					
17	52°50'21"	24.00'	22.13'	11.92'		56	15°28'57"	136.50'	36.88'	18.56'					
18	44°05'16"	71.00'	54.63'	28.75'		57	49°33'05"	154.00'	133.18'	71.08'					
19	56°16'25"	14.00'	13.51'	7.33'		58	82°03'57"	14.00'	20.00'	12.18'					
20	34°26'27"	42.00'	25.27'	13.03'		59	26°47'34"	186.00'	93.47'	47.74'					
21	26°07'06"	52.50'	23.93'	12.18'		60	63°16'14"	24.00'	34.88'	21.33'					
22	23°54'28"	68.00'	28.37'	14.40'		61	12°35'25"	1236.35'	272.12'	136.61'					
23	76°36'32"	14.00'	18.72'	11.08'		62	10°03'54"	1270.35'	223.16'	111.87'					
24	18°26'37"	71.00'	19.14'	9.83'		63	87°47'18"	24.00'	36.77'	23.09'					
25	50°22'21"	116.00'	101.98'	54.55'		64	16°26'32"	32.50'	9.32'	4.69'					
26	43°30'21"	166.00'	121.05'	66.24'		65	25°59'26"	199.00'	90.27'	45.93'					
27	43°30'21"	134.00'	101.75'	53.47'		66	23°00'40"	201.00'	80.73'	40.91'					
28	24°31'17"	64.00'	35.95'	18.25'		67	01°01'24"	34.50'	0.81'	0.31'					
29	93°14'42"	4.50'	7.32'	4.76'		68	80°47'08"	71.00'	75.32'	41.64'					
30	22°36'22"	65.50'	26.24'	13.29'		69	60°47'08"	39.00'	41.37'	22.87'					
31	90°00'00"	4.50'	7.07'	4.50'		70	68°17'41"	27.50'	32.78'	18.66'					
32	97°04'56"	39.00'	66.08'	44.18'											
33	136°47'36"	4.50'	10.74'	11.05'											
34	112°00'00"	24.00'	46.91'	35.88'											
35	30°16'23"	216.00'	114.13'	58.43'											

LAKE CURVE DATA

N°	DELTA	RADIUS	LENGTH	TANGENT
A	69°31'46"	25.00'	39.06'	24.60'
B	69°18'08"	50.00'	60.48'	34.56'
C	119°01'46"	50.00'	103.87'	64.93'
D	43°27'29"	120.00'	91.02'	47.82'
E	38°40'50"	50.00'	33.76'	17.55'

City of Williamsburg & County of James City
 Circuit Court: This PLAT was recorded on
 14 Nov 2001
 at 3:02 AM/PM, PB 84 PG 31-31
 DOCUMENT # 010023350
 BETSY B. WOOLRIDGE, CLERK
Betsy Woolridge Dep. Clerk



EXHIBIT "A" PHASE 35
 FAIRWAYS VILLAS
 AT
 GREENSPRINGS, A CONDOMINIUM
 FOR
 GREENSPRINGS DEVELOPMENT, L.C.
 BERKELEY DISTRICT JAMES CITY COUNTY, VIRGINIA

Hassell & Folkes, P.C. Engineers Surveyors Planners Chesapeake, VA 23320 (757)547-9531	SCALE: NONE	DATE: 12/08/01	FILE NAME: FAIRWY55.DWG EWAYPLAT.DWG	REV.
---	-------------	----------------	---	------