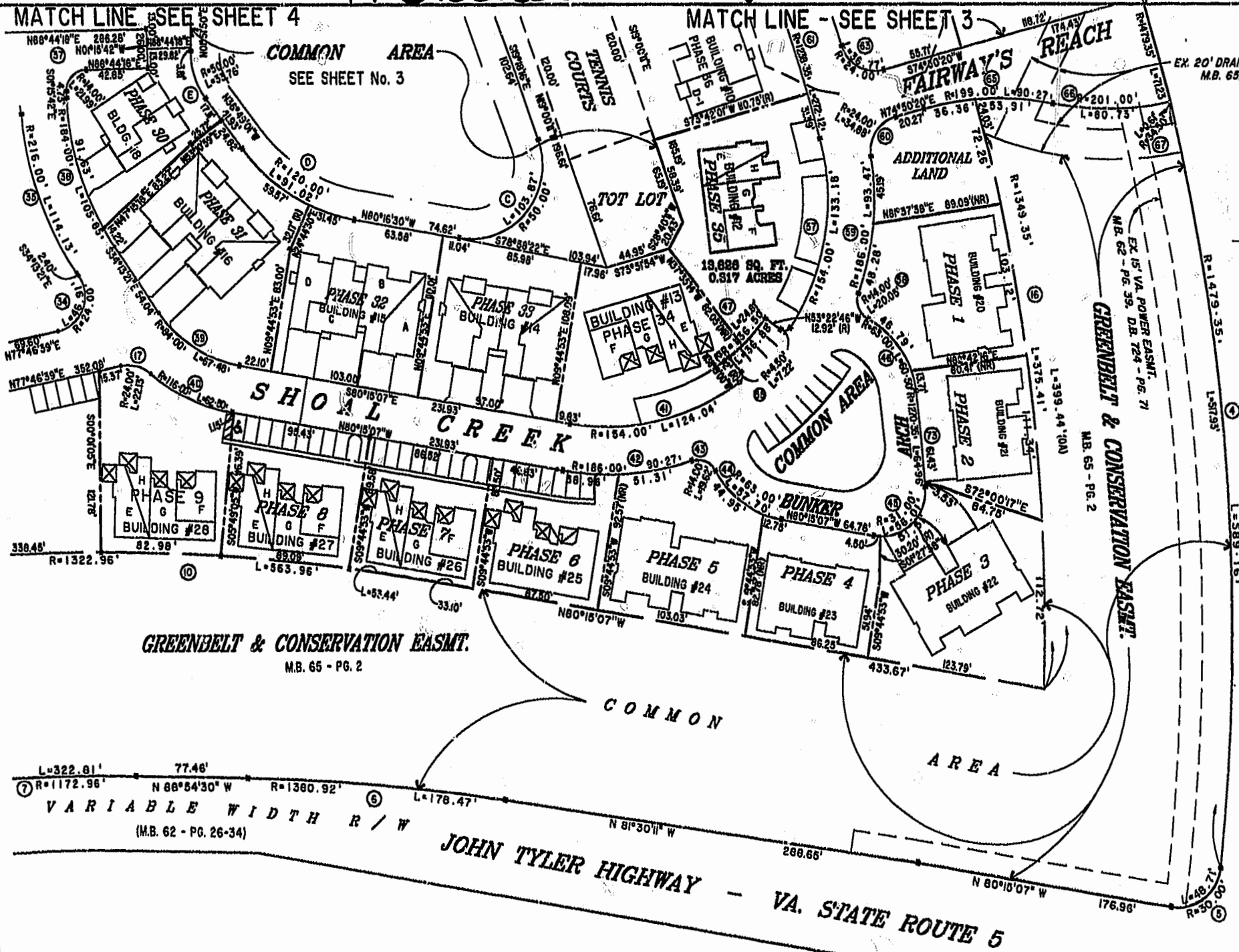


#01002350

84 PAGE 31



GREENSPRINGS VARIABLE WIDTH R/W (M.B. 62 - PG. 26-34)



**EXHIBIT "A" PHASE 35
FAIRWAYS VILLAS
AT
GREENSPRINGS, A CONDOMINIUM
FOR
GREENSPRINGS DEVELOPMENT, L.C.
BERKELEY DISTRICT JAMES CITY COUNTY, VIRGINIA**

City of Williamsburg & County of James City
Circuit Court. This PLAT was recorded on
14 Nov 2001
at 2:02 PM, PD, PG 30-35
DOCUMENT # 01002350
BETSY B. WOOLRIDGE, CLERK
Betsy Woolridge, City Clerk



Hassell & Folkes, P.C. Engineers Surveyors Planners Chesapeake, VA 23320 (757) 547-8531	SCALE: 1"=50'	DATE: 12/08/01	SHEET 2 of 6
--	---------------	----------------	--------------