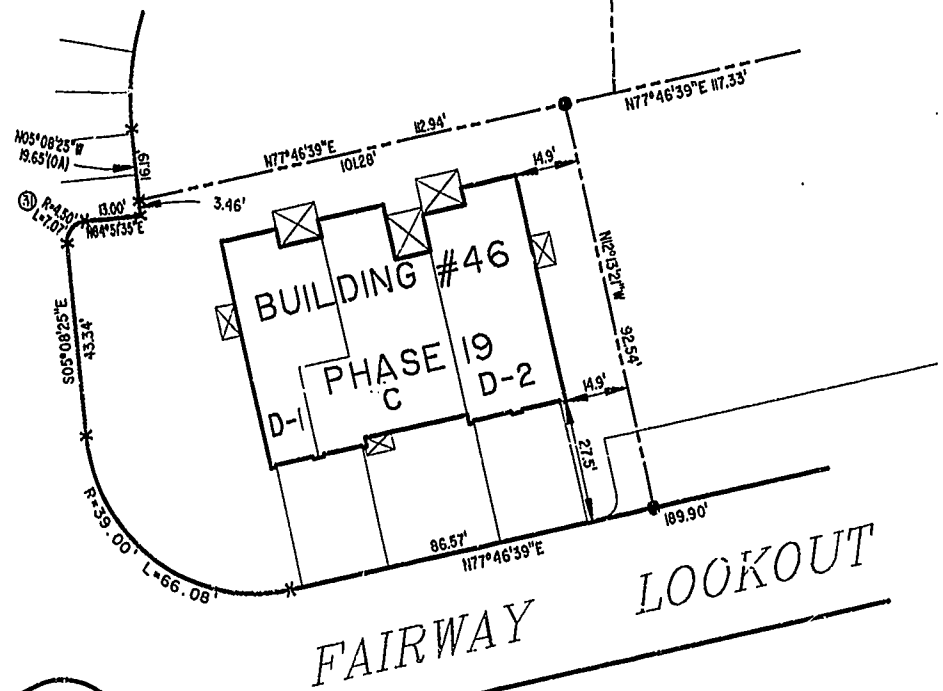
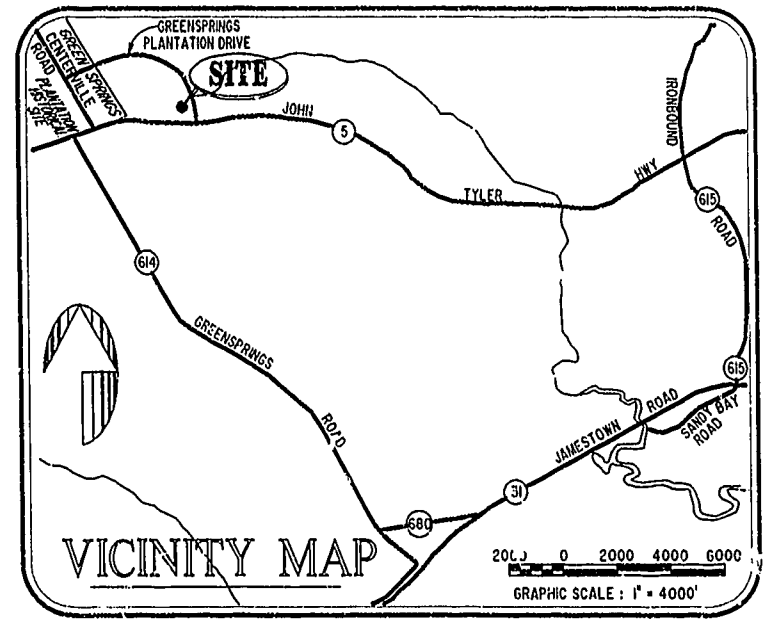


BUILDING NUMBER	UNIT NUMBER	UNIT TYPE	STREET ADDRESS
46	46-435	D2	435 FAIRWAY LOOKOUT
46	46-445	C	445 FAIRWAY LOOKOUT
46	46-455	D1	455 FAIRWAY LOOKOUT

**NOTES:**

1. THE TOTAL AREA OF SITE IS 1,222,568 SQ.FT. (28.07 AC.) OF WHICH 170,233 SQ.FT. (3.908 AC.) IS ADDITIONAL LAND.
2. THE AREA OF THE SUBMITTED LAND IS 1,052,335 SQ.FT. (24.158 AC.)
3. THE COMMON AREA IS TO BE THE RESPONSIBILITY OF THE CONDOMINIUM ASSOCIATION AND HAS A TOTAL AREA OF 16.43 AC.



**PHASE 19**

AREA = 11,086 SQ. FT. = 0.254 AC.

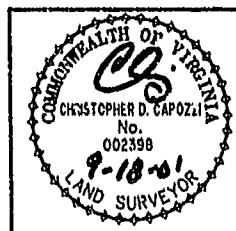
I CHRISTOPHER D. CAPOZZI, A CERTIFIED LAND SURVEYOR, DO HEREBY CERTIFY THAT THIS PLAT IS ACCURATE, AND THAT IT COMPLIES WITH THE PROVISIONS OF SECTION 55 - 79.58A OF THE CODE OF VIRGINIA. I FURTHER HEREBY CERTIFY THAT ALL UNITS OR PORTIONS THEREOF DEPICTED HEREON HAVE BEEN SUBSTANTIALLY COMPLETED.

THE UNDERSIGNED CERTIFIED LAND SURVEYOR CERTIFIES THAT HE HAS READ SECTION 55 - 79.58B OF THE CODE OF VIRGINIA, AND FINDS THIS PLAT TO BE ACCURATE AND IN COMPLIANCE WITH THE CODE. I FURTHER CERTIFY THAT ALL UNITS OR PORTIONS THEREOF DEPICTED HEREON HAVE BEEN SUBSTANTIALLY COMPLETED.

9-18-01  
DATE

*C.D.*  
LAND SURVEYOR No. 002398

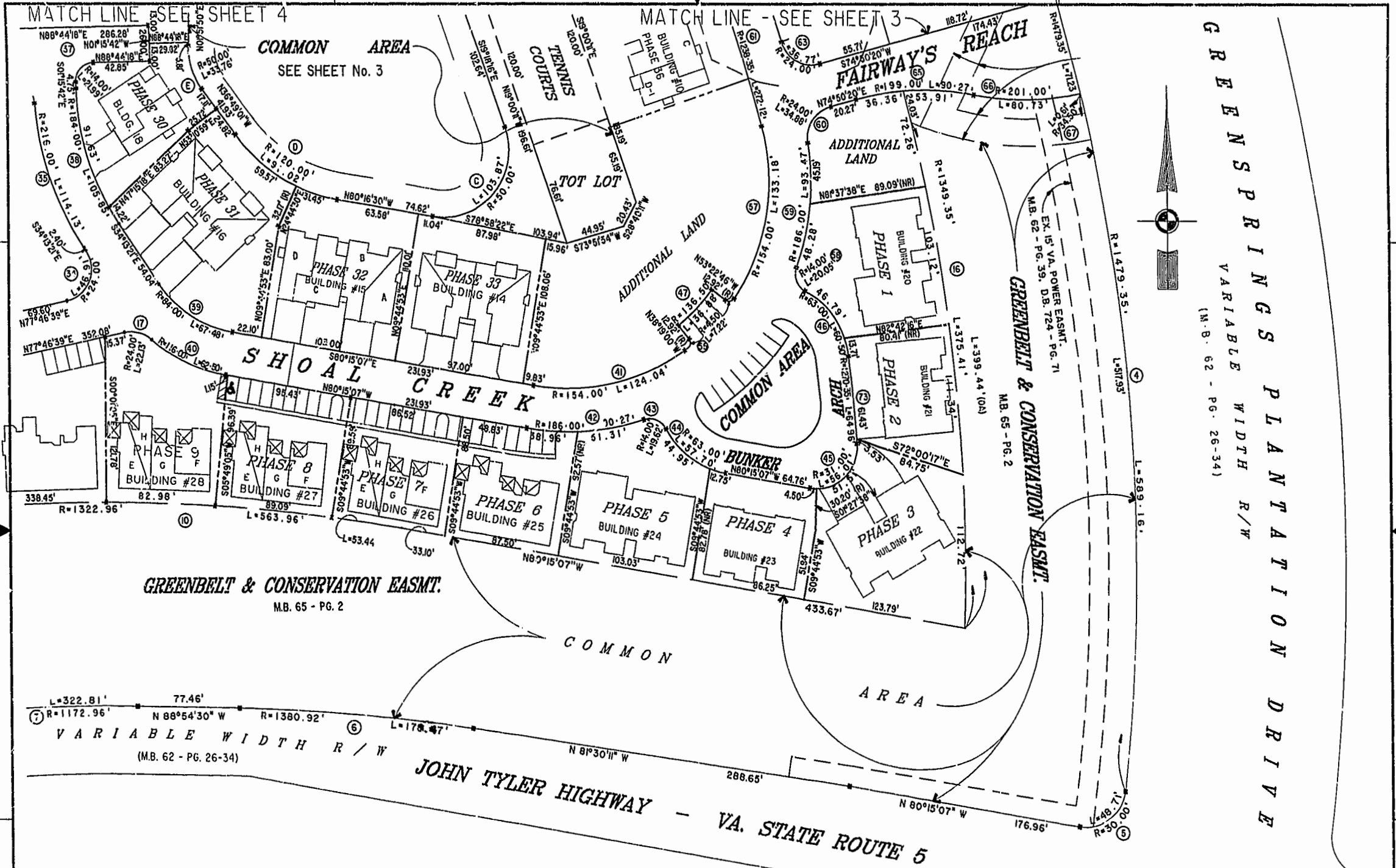
City of Williamsburg & County of James City  
Circuit Court: This PLAT was recorded on  
21 Oct 2001  
at 3:52 PM/PM. PB 83 PG 34-41  
DOCUMENT # 012017054  
BETSY B. WOOLRIDGE, CLERK  
*Betsy B. Woolridge* Clerk



**Hassell & Foikes, P.C.**  
Engineers Surveyors Planners  
325 Volvo Parkway  
Chesapeake, VA. 23320  
(757)547-9531

DRAWN BY:	DATE
HJS	09/14/01
COMP BY:	DATE
HF	
CHECKED BY:	DATE
HBA	09/14/01

EXHIBIT "A" PHASE 19			
FAIRWAYS VILLAS			
AT			
GREENSPRINGS, A CONDOMINIUM			
FOR			
GREENSPRINGS DEVELOPMENT, L.C.			
BERKELEY DISTRICT		JAMES CITY COUNTY, VIRGINIA	
SIZE	DISK/BOX	FILENAME	REV.
C	95-079	61/16	FAIRWT19.DWG
		REF: 10/13	FWAYPL1.AT.DWG
SCALE: 1" = 25'	DATE: 09/14/01	SHEET 1 of 6	



GREENSPRINGS VARIABLE WIDTH R/W  
 (M.B. 62 - PG. 26-34)

**EXHIBIT "A" PHASE 19**  
**FAIRWAYS VILLAS**  
 AT  
**GREENSPRINGS, A CONDOMINIUM**  
 FOR  
**GREENSPRINGS DEVELOPMENT, L.C.**  
 BERKELEY DISTRICT JAMES CITY COUNTY, VIRGINIA



City of Williamsburg & County of James City  
 Circuit Court, This PLAT was recorded on  
 31 Oct 2001  
 at 3:58 PM, PG 23, PG 36-41  
 DOCUMENT # 010017054  
 BETSY B. WOOLRIDGE, CLERK  
 Betsy Woolridge, Rep. Clerk

Hassell & Polkes, P.C. Engineers Surveyors Planners Chesapeake, VA 23320 (757) 547-9531	SIZE C	CONTRACT NO 95-075	DISK/BOX 61/16 REF: 10/13	FILENAME FAIRWT19.DWG FWAYPLAT.DWG	REV.
SCALE: 1" = 50'		DATE: 09/14/01		SHEET 2 of 6	

# "GREENSPRINGS PLANTATION"

46-1-01-0-0001  
(DB 322, PG 254)



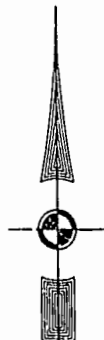
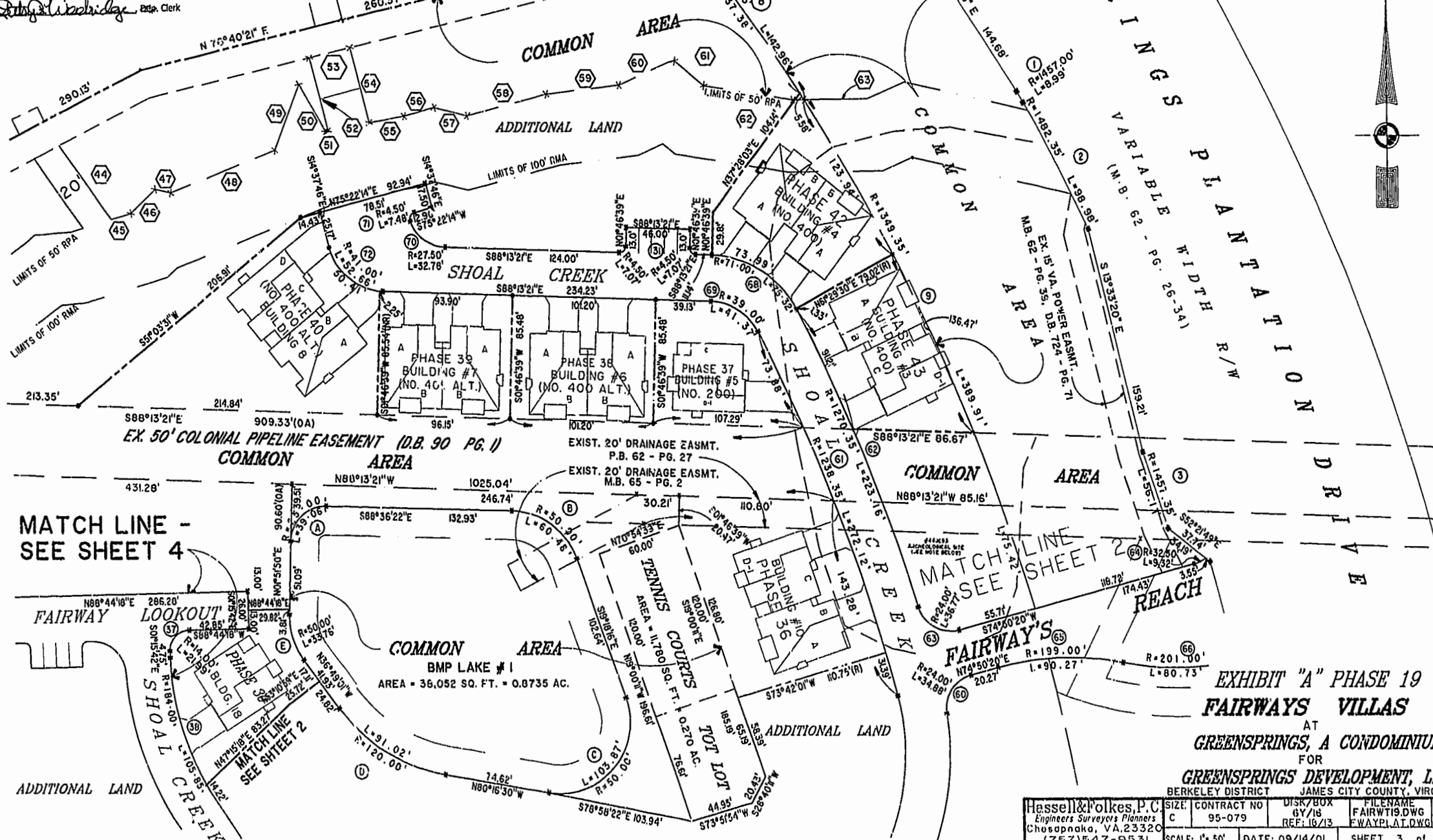
City of Williamsburg & County of James City  
Circuit Court, This PLAT was recorded on  
21 Sept. 2001  
at 3:58 PM, P.B. # 2, PG 36-41  
DOCUMENT # 010017054  
BETSY B. WOOLRIDGE, CLERK

*Betsy B. Woolridge*, Esq. Clerk

EXIST. 20' JAMES CITY COUNTY SERVICE  
AUTHORITY SAN. SEWER EASEMENT AS  
SHOWN IN AS-BUILT LOCATION, D.B. 141 - PG. 388

EXIST. 20' DRAINAGE EASEMENT  
M.B. 65 - PG. 2

## MATCH LINE - SEE SHEET 5



## MATCH LINE - SEE SHEET 4

## MATCH LINE - SEE SHEET 2

### EXHIBIT "A" PHASE 19 FAIRWAYS VILLAS AT GREENSPRINGS, A CONDOMINIUM FOR

**GREENSPRINGS DEVELOPMENT, L.C.**  
BERKELEY DISTRICT JAMES CITY COUNTY, VIRGINIA

Hassell & Folkes, P.C. Engineers Surveyors Planners Chesapeake, VA 23320 (757) 547-9531	SIZE: C CONTRACT NO: 95-079	DISK/BOX: 6Y/16 REF: 16/13	FILENAME: FAIRWT19.DWG FWAYPLAT.DWG	REV:
SCALE: 1" = 50'	DATE: 09/14/01	SHEET 3 of 6		

EXIST. 20' JAMES CITY COUNTY SERVICE AUTHORITY SAN. SEWER EASEMENT AS SHOWN IN AS-BUILT LOCATION, D.B. 141 - PG. 388



MATCH LINE - SEE SHEET 5

MATCH LINE - SEE SHEET 2

46-1-01-0-0001  
"GREENSPRINGS PLANTATION"  
(DB 322, PG 254)

City of Williamsburg & County of James City  
Circuit Court: This PLAT was recorded on  
21 Oct 2001  
at 3:32 PM, PB 83 PG 34-41  
DOCUMENT # 010017054  
BETSY B. WOOLRIDGE, CLERK

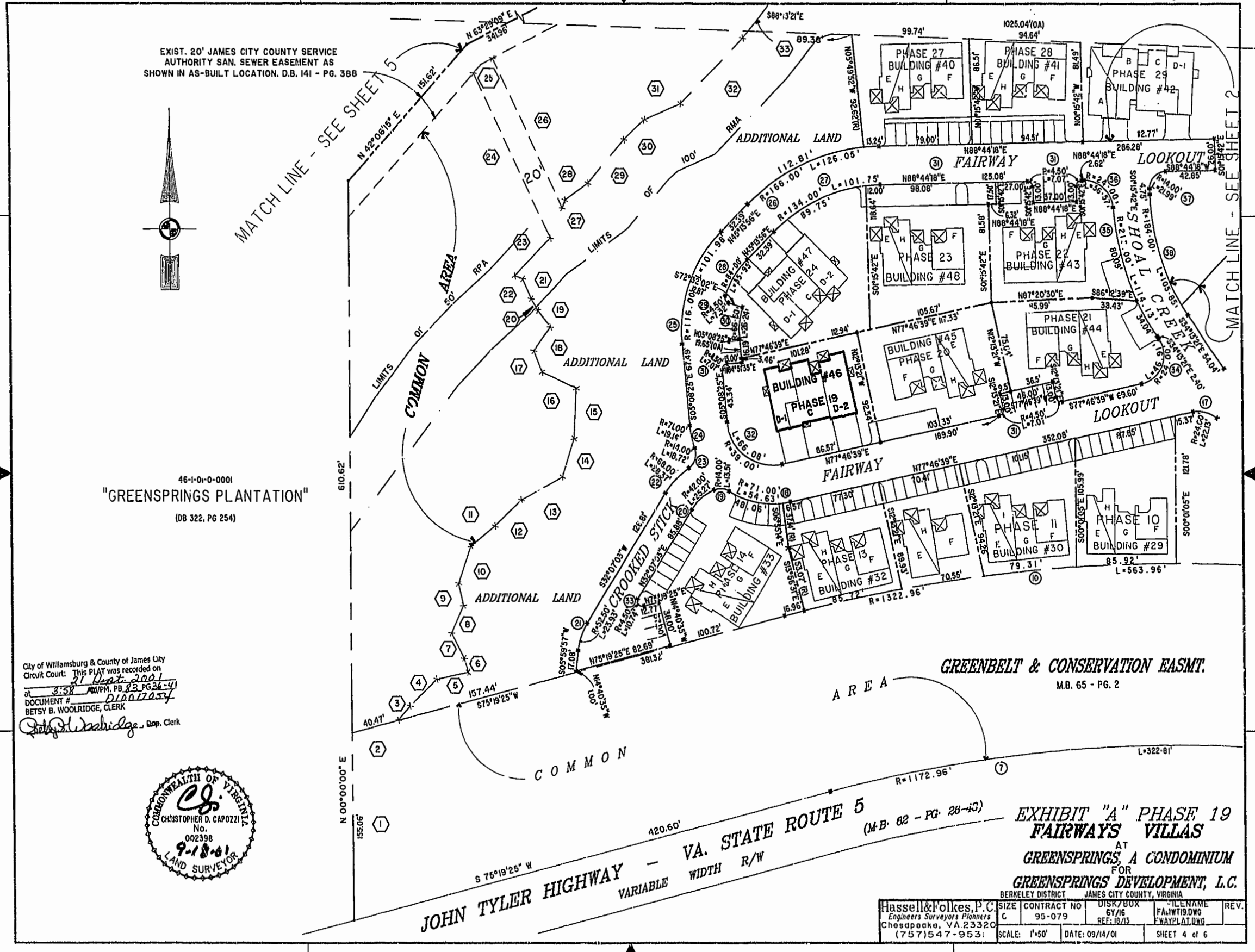


JOHN TYLER HIGHWAY - VA. STATE ROUTE 5  
VARIABLE WIDTH R/W

GREENBELT & CONSERVATION EASMT.  
M.B. 65 - PG. 2

EXHIBIT "A" PHASE 19  
FAIRWAYS VILLAS  
AT  
GREENSPRINGS, A CONDOMINIUM  
FOR  
GREENSPRINGS DEVELOPMENT, L.C.

Hassell & Polkes, P.C. Engineers Surveyors Planners Chesapeake, VA 23320 (757) 547-9531	SIZE C	CONTRACT NO 95-079	DISK/BOX 6Y/16 REF: JB/13	FILENAME FA1W19.DWG FWAYPLAT.DWG	REV. SHEET 4 of 6
SCALE: 1"=50'		DATE: 09/14/01			



46-1-01-0-0001  
"GREENSPRINGS PLANTATION"  
(DB 322, PG 254)

EXIST. 20' JAMES CITY COUNTY SERVICE  
AUTHORITY SAN. SEWER EASEMENT AS  
SHOWN IN AS-BUILT LOCATION. D.B. 141 - PG. 388

EXIST. 20' DRAINAGE EASMT.  
M.B. 65 - PG. 2

EXIST. 20' DRAINAGE EASEMENT  
M.B. 65 - PG. 2

EX. 50' COLONIAL PIPELINE EASEMENT (D.B. 90 PG. 1)  
COMMON AREA

City of Williamsburg & County of James City  
Circuit Court: This PLAT was recorded on  
21 Nov. 2001  
at 3:58 PM, P.D. 23, PG. 36-41  
DOCUMENT # 010017054  
BETSY B. WOOLRIDGE, CLERK

*Betsy B. Woolridge*, Dep. Clerk

MATCH LINE  
SEE SHEET 4

MATCH LINE  
SEE SHEET 4

MATCH LINE - SEE SHEET 3

COMMON AREA  
BMP LAKE # 1  
AREA = 38,052 SQ. FT. =  
0.8735 AC.  
SEE SHEET 3 FOR DETAIL

SEE SHEETS 4 FOR  
LOCATION AND DETAILS  
OF PHASE 22, BLDG. #43

EXHIBIT "A" PHASE 19  
FAIRWAYS VILLAS

AT  
GREENSPRINGS, A CONDOMINIUM  
FOR  
GREENSPRINGS DEVELOPMENT, L.C.  
BERKELEY DISTRICT JAMES CITY COUNTY, VIRGINIA



Hassell & Folkes, P.C. Engineers Surveyors Planners Chesapeake, VA 23320 (757)547-9531	SIZE C	CONTRACT NO 95-079	DISK/BOX 6Y/16	FILENAME FAIRWT19.DWG	REV. REV.
	SCALE: 1" = 50'	DATE: 09/14/01		SHEET 5 of 6	



Nº	BEARING	DISTANCE	Nº	BEARING	DISTANCE	Nº	BEARING	DISTANCE	Nº	BEARING	DISTANCE
1	NORTH	155.06'	21	N24°19'39"W	18.00'	41	N73°24'07"E	8.57'	61	S50°49'30"E	28.39'
2	N75°19'25"E	40.47'	22	N69°19'39"W	7.07'	42	N35°32'25"W	59.16'	62	S81°14'26"E	64.31'
3	N40°42'39"E	15.76'	23	N44°31'02"E	43.59'	43	N63°00'24"E	20.22'	63	N69°22'10"E	8.13'
4	N46°05'27"E	32.02'	24	N25°21'31"W	150.65'	44	S35°32'25"E	63.02'			
5	N78°06'22"E	27.59'	25	N53°05'23"E	20.41'	45	N73°24'07"E	14.72'			
6	N16°44'45"W	12.04'	26	S25°21'31"E	136.97'	46	N46°21'12"E	24.05'			
7	N27°24'57"W	23.32'	27	N19°51'26"E	6.90'	47	S77°35'56"E	11.29'			
8	N24°46'40"E	25.18'	28	N53°59'32"E	24.16'	48	N68°43'48"E	80.58'			
9	N13°22'46"W	18.38'	29	N40°41'58"E	47.56'	49	N21°06'45"E	48.92'			
10	N19°16'53"E	32.76'	30	N46°49'41"E	23.74'	50	S30°15'14"E	37.59'			
11	N51°25'01"E	26.57'	31	N66°20'36"E	33.45'	51	N79°32'01"E	1.93'			
12	N46°33'07"E	31.05'	32	N44°53'19"E	76.32'	52	N14°37'46"W	52.29'			
13	N61°21'55"E	40.31'	33	N38°39'22"E	40.18'	53	N76°40'21"E	30.01'			
14	N17°35'03"E	32.98'	34	N63°44'13"E	53.14'	54	S14°37'46"E	53.80'			
15	N02°42'14"E	41.60'	35	N72°23'40"E	52.44'	55	N79°32'01"E	25.17'			
16	N65°30'48"W	31.89'	36	N50°42'36"E	43.97'	56	N74°56'16"E	22.42'			
17	N21°18'53"W	19.03'	37	N58°37'17"E	38.60'	57	S76°45'41"E	24.45'			
18	N35°55'39"E	24.19'	38	N54°09'52"E	41.40'	58	N75°14'55"E	58.28'			
19	N37°34'05"W	17.46'	39	N54°09'52"E	37.13'	59	N83°10'12"E	52.44'			
20	N29°31'19"W	11.05'	40	N94°42'43"E	25.55'	60	N66°02'13"E	42.50'			

CURVE DATA

Nº	DELTA	RADIUS	LENGTH	TANGENT	CHORD	Nº	DELTA	RADIUS	LENGTH	TANGENT	Nº	DELTA	RADIUS	LENGTH	TANGENT
1	00°21'33"	1457.00'	8.99'	4.50'	S29°17'32"E 8.99'	36	87°18'45"	24.00'	36.57'	22.90'	71	95°17'54"	4.50'	7.48'	4.94'
2	03°29'33"	1482.35'	98.98'	49.51'	S27°33'21"E 98.96'	37	90°00'00"	14.00'	21.99'	14.00'	72	73°35'34"	41.00'	52.66'	30.67'
3	02°12'22"	1457.35'	56.11'	28.06'	S10°24'28"E 56.11'	38	32°57'39"	184.00'	105.85'	54.43'	73	02°55'47"	1270.35'	64.96'	32.49'
4	22°49'06"	1479.35'	589.16'	298.53'	S04°41'57"E 585.27'	39	46°01'46"	84.00'	67.48'	35.68'					
5	93°02'17"	30.00'	48.71'	31.63'	S53°13'44"W 43.54'	40	30°52'07"	116.00'	62.00'	32.03'					
6	07°24'18"	1380.92'	178.47'	89.36'	N85°12'21"W 178.35'	41	46°08'54"	154.00'	124.04'	65.60'					
7	15°46'06"	1172.96'	322.81'	162.43'	S85°12'28"W 321.79'	42	27°48'28"	186.00'	90.27'	46.04'					
8	06°04'13"	1349.35'	142.96'	71.55'		43	80°16'51"	14.00'	19.62'	11.81'					
9	16°33'24"	1349.35'	389.91'	196.32'		44	82°28'22"	63.00'	57.70'	31.05'					
10	24°25'28"	1322.96'	563.96'	286.33'		45	103°31'29"	31.00'	56.01'	39.34'					
						46	55°0'24"	63.00'	60.50'	32.81'					
16	16°57'40"	1349.35'	399.44'	201.19'		55	91°55'00"	4.50'	7.22'	4.65'					
17	52°50'21"	24.00'	22.13'	11.92'		56	15°28'57"	136.50'	36.88'	18.56'					
18	44°05'16"	71.00'	54.63'	28.75'		57	49°33'05"	154.00'	133.18'	71.08'					
19	55°16'25"	14.00'	13.51'	7.33'		58	82°02'57"	14.00'	20.05'	12.18'					
20	34°28'27"	42.00'	25.27'	13.03'		59	28°47'34"	186.00'	93.47'	47.74'					
21	26°07'06"	52.50'	23.93'	12.18'		60	83°16'14"	24.00'	34.88'	21.33'					
22	23°54'28"	68.00'	28.37'	14.40'		61	12°35'25"	1238.35'	272.12'	136.61'					
23	76°36'32"	14.00'	18.72'	11.06'		62	10°03'54"	1270.35'	223.16'	111.87'					
24	15°26'37"	71.00'	19.14'	9.63'		63	87°47'18"	24.00'	36.77'	23.09'					
25	50°22'21"	116.00'	101.98'	54.55'		64	16°25'32"	32.50'	9.32'	4.69'					
26	43°30'21"	166.00'	126.05'	66.24'		65	25°59'26"	199.00'	90.27'	45.93'					
27	43°30'21"	134.00'	101.75'	53.47'		66	23°00'40"	201.00'	80.73'	40.91'					
28	24°31'17"	84.00'	35.95'	18.25'		67	01°01'24"	34.50'	0.51'	0.31'					
29	93°14'42"	4.50'	7.32'	4.76'		68	60°47'05"	71.00'	75.32'	41.64'					
30	22°36'22"	66.50'	26.24'	13.29'		69	60°47'05"	39.00'	41.37'	22.87'					
31	90°00'00"	4.50'	7.07'	4.50'		70	68°17'41"	27.50'	32.76'	18.65'					
32	97°04'56"	39.00'	66.08'	44.15'											
33	136°47'38"	4.50'	10.74'	11.05'											
34	112°00'00"	24.00'	46.91'	35.56'											
35	30°16'23"	216.00'	114.13'	58.43'											

LAKE CURVE DATA

Nº	DELTA	RADIUS	LENGTH	TANGENT
A	89°31'48"	25.00'	39.06'	24.80'
B	69°18'06"	50.00'	60.48'	34.56'
C	119°01'46"	50.00'	103.87'	84.93'
D	43°27'29"	120.00'	91.02'	47.82'
E	38°40'50"	50.00'	33.76'	17.55'



City of Williamsburg & County of James City  
 Circuit Court: This PLAT was recorded on  
 21 Oct 2001  
 at 3:52 PM, PB 83 PG 36-41  
 DOCUMENT # 010017054  
 BETSY B. WOOLRIDGE, CLERK

EXHIBIT "A" PHASE 19  
 FAIRWAYS VILLAS  
 AT  
 GREENSPRINGS, A CONDOMINIUM  
 FOR  
 GREENSPRINGS DEVELOPMENT, L.C.  
 BERKELEY DISTRICT JAM'S CITY COUNTY, VIRGINIA

Hassell & Polkes, P.C. Engineers Surveyors Planners Chesapeake, VA 23320 (757) 547-9531	SIZE: C CONTRACT NO: 95-079	DISK/BOX: 6Y/16 REF: 18/13	FILENAME: FAIRWT19.DWG F.WAYPLAT.DWG	REV.
SCALE: NONE	DATE: 09/14/01	SHEET 6 of 6		