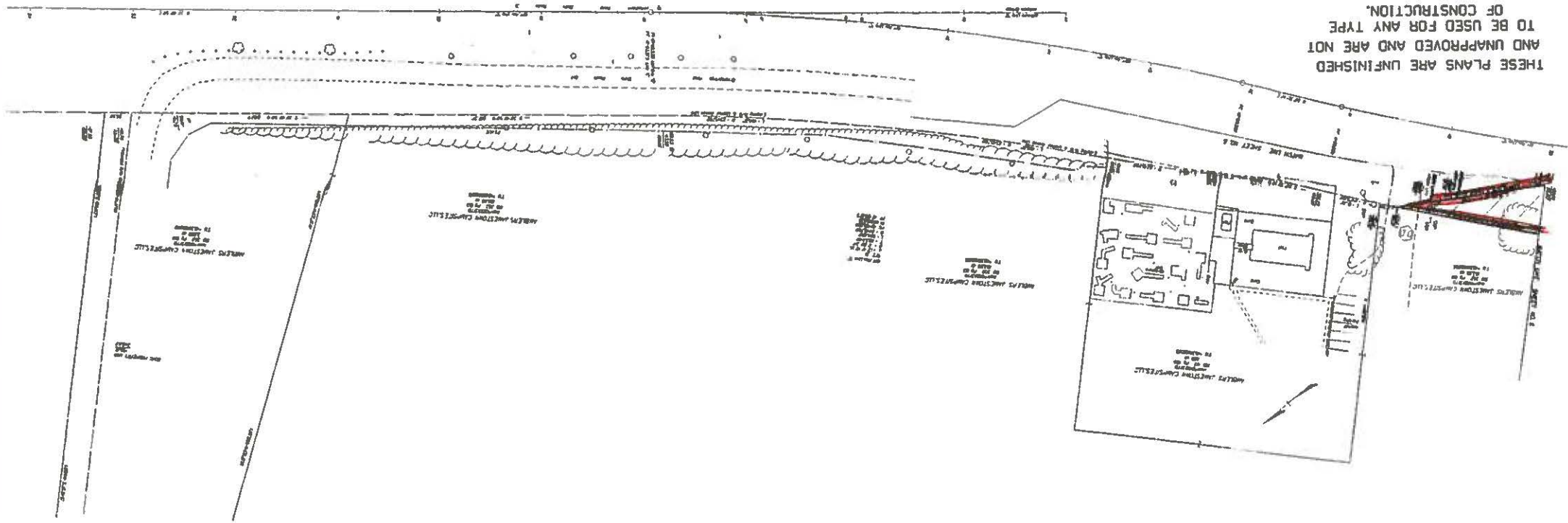


DESIGN REVISIONS RELATIVE TO CONSTRUCTION OR TO REGULATION AND CONTROL OF TRAFFIC MAY BE SUBJECT TO CHANGE AS DETERMINED BY THE DEPARTMENT

PROJECT NO.	0359-047-101.C501
SHEET NO.	6C
DATE	
SCALE	
PROJECT	
TITLE	359
NO.	NA



THESE PLANS ARE UNFINISHED AND UNAPPROVED AND ARE NOT TO BE USED FOR ANY TYPE OF CONSTRUCTION.

CONVERTED TO THE JAMESTOWN TOWNSHIP FOUNDATION

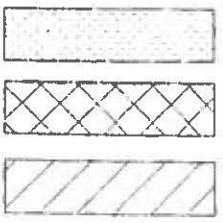
LINE	BEARING	DIST ANCE	CORD BEARING	CORD DIST ANCE	RADIUS	ARC LENGTH
A-B	N202.38W	118.55				
B-C	N38.4858E	153.47				
C-D	N39.47.25E	381.89				
D-E	N47.55.4E	100.31				
E-F	N44.54.25E	323.07				
F-G	N39.05.31E	433.43				
G-H	S57.10E	34.9				
H-A	S38.48.58W	233.24				
TOTAL AREA 42.34 ACRES						
TOTAL AREA COVERED 4272 ACRES						

PROPOSED TO BE CONVERTED TO THE JAMESTOWN TOWNSHIP FOUNDATION

LINE	BEARING	DIST ANCE	CORD BEARING	CORD DIST ANCE	RADIUS	ARC LENGTH
A-B	N32.7.38W	144.33				
B-C	N38.48.58E	115.87				
C-D	N39.47.26E	388.57				
D-E	N47.55.4E	100.31				
E-F	N46.38.04E	478.44				
F-G	S37.87.48E	5.00				
G-H	N52.30.14E	100.00				
H-A	N33.53.58E	185.89				
A-P	S57.10E	2.21				
P-Q	S57.10E	2.21				
Q-F	S19.05.71W	433.43				
F-E	S44.54.25W	323.07				
E-D	S39.47.25W	384.89				
D-C	S38.48.58W	153.47				
TOTAL AREA 51.21 ACRES						

TO BE ACQUIRED BY VDOT

LINE	BEARING	DIST ANCE	CORD BEARING	CORD DIST ANCE	RADIUS	ARC LENGTH
A-R	N75.918W	128.59				
R-S	N38.48.58E	23.47				
S-T	N39.47.26E	395.37				
T-U	N47.55.4E	60.00				
U-V	N47.55.4E	42.84				
V-X	N47.55.4E	42.84				
X-T	N47.55.4E	194.55				
Y-00	N47.55.4E	194.55				
00-E1	S17.07.42W	145.08				
E1-E2	S44.08.53W	284.44				
E2-E3	S47.55.4E	100.31				
H-H	S39.47.25W	391.63				
H-H	S38.48.58W	153.47				
TOTAL AREA 3.408 ACRES						



To be acquired by VDOT
 3.408 acres

Proposed to be conveyed to the Jamestown Township Foundation
 51.21 acres

Conveyed to the Jamestown Township Foundation
 by deed dated May 23, 2005
 4272 acres