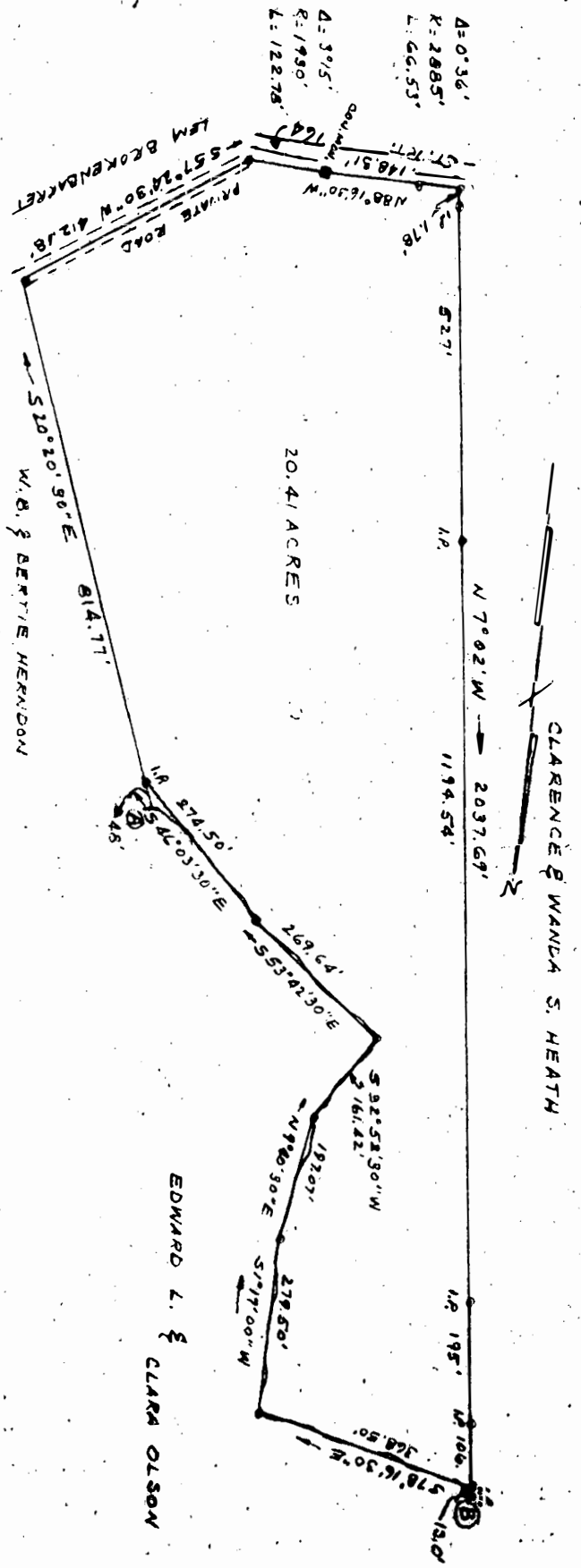


REF. PG. 3, P. 12
 PB 19, P. 40
 PB 19, P. 31
 DB 42, P. 360

NOTE - P/L IS Q OF STREAM FROM A TO B
 BEARINGS & DISTANCES ARE BASE LINE



PROPERTY PLAT
 LELA N. HEATH (MALLORY)
 JAMES CITY COUNTY, VA.
 SCALE 1" = 200' FEB, 1969
 W.D. THOMAS, C.L.S. 579