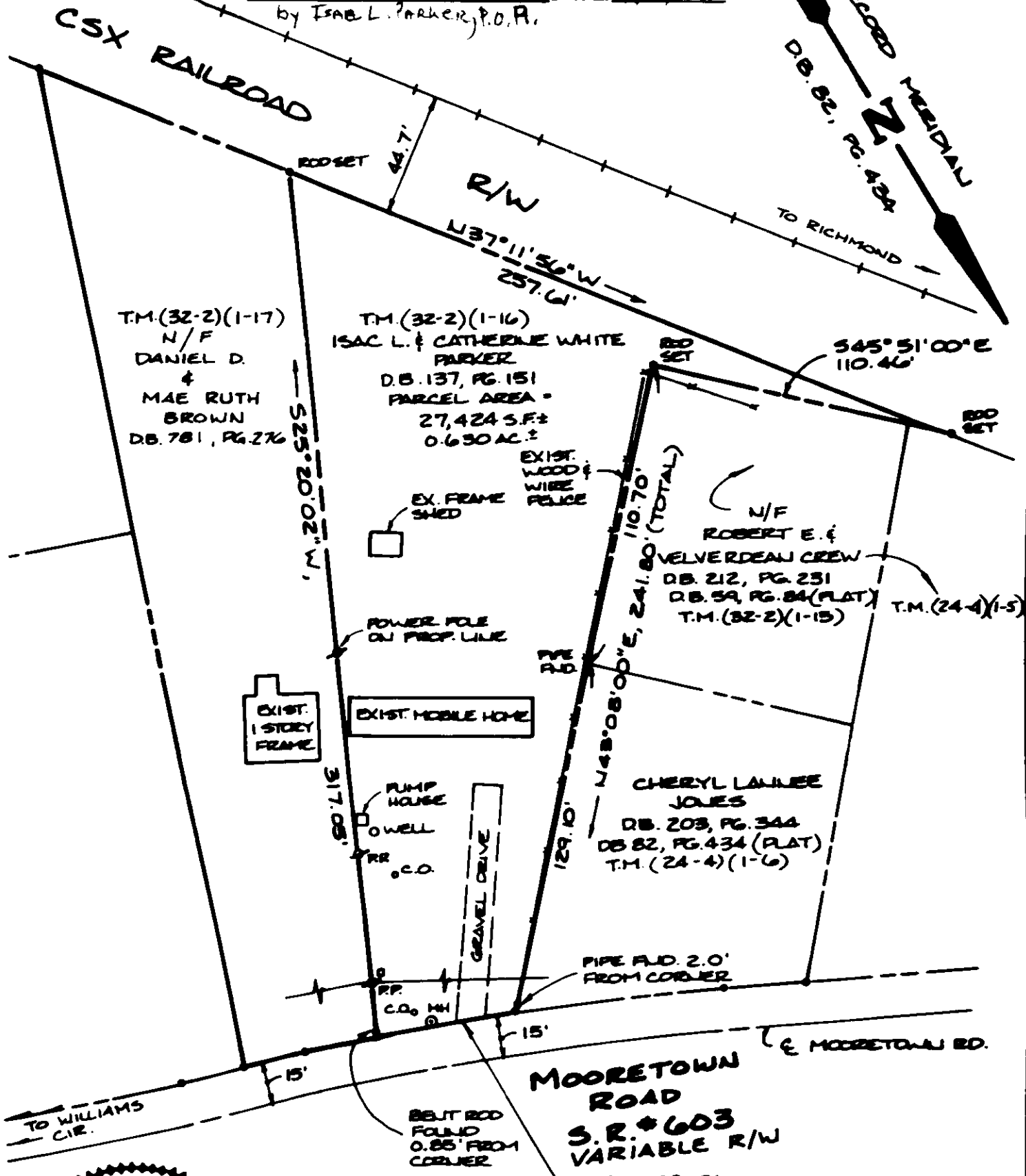


W.P.C. *Isaac L. Parker* DATE: 8/8/96  
*Catherine White Parker* DATE: 8/8/96  
 by ISAC L. PARKER, P.O.R.

802 ME0474  
 RECORDED MERIDIAN  
 D.B. 82, PG. 434  
 TO RICHMOND



T.M.(32-2)(1-17)  
 N/F  
 DANIEL D.  
 &  
 MAE RUTH  
 BROWN  
 D.B. 781, PG. 276

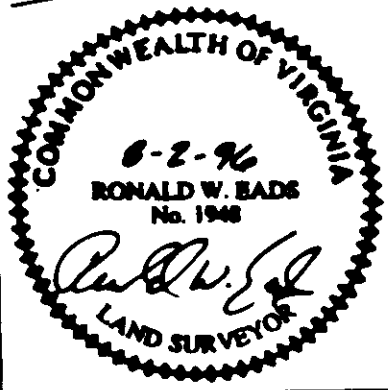
T.M.(32-2)(1-16)  
 ISAC L. & CATHERINE WHITE  
 PARKER  
 D.B. 137, PG. 151  
 PARCEL AREA =  
 27,424 S.F. ±  
 0.630 AC. ±

N/F  
 ROBERT E. &  
 VELVERDEAU CREW  
 D.B. 212, PG. 231  
 D.B. 59, PG. 84 (PLAT)  
 T.M.(32-2)(1-15)  
 T.M.(24-4)(1-5)

CHERYL LAINEE  
 JONES  
 D.B. 203, PG. 344  
 D.B. 82, PG. 434 (PLAT)  
 T.M.(24-4)(1-6)

MOORETOWN  
 ROAD  
 S.R. #603  
 VARIABLE R/W  
 Δ = 02°28'34"  
 B = 1162.38'  
 L = 50.24'  
 T = 25.12'  
 C = 50.23'  
 CB = 268°46'41"E

NOTE:  
 BOUNDARY INFORMATION AS SHOWN TAKEN FROM  
 UNRECORDED PLAT PREPARED BY AES CONSULTING  
 ENGINEERS DATED 9/20/95 AND HAS NOT BEEN  
 RESURVEYED AT THIS DATE.



Consulting Engineers  
 Engineers, Surveyors, Planners

5248 Olds Towne Road, Suite 1  
 Williamsburg, Virginia 23188  
 Ph. (804)-253-0040, Fax (804)-220-8884

**PLAT SHOWING**  
**A PARCEL CONTAINING 0.630 ACRES ±**  
**OWNED BY: ISAC L. & CATHERINE WHITE PARKER**