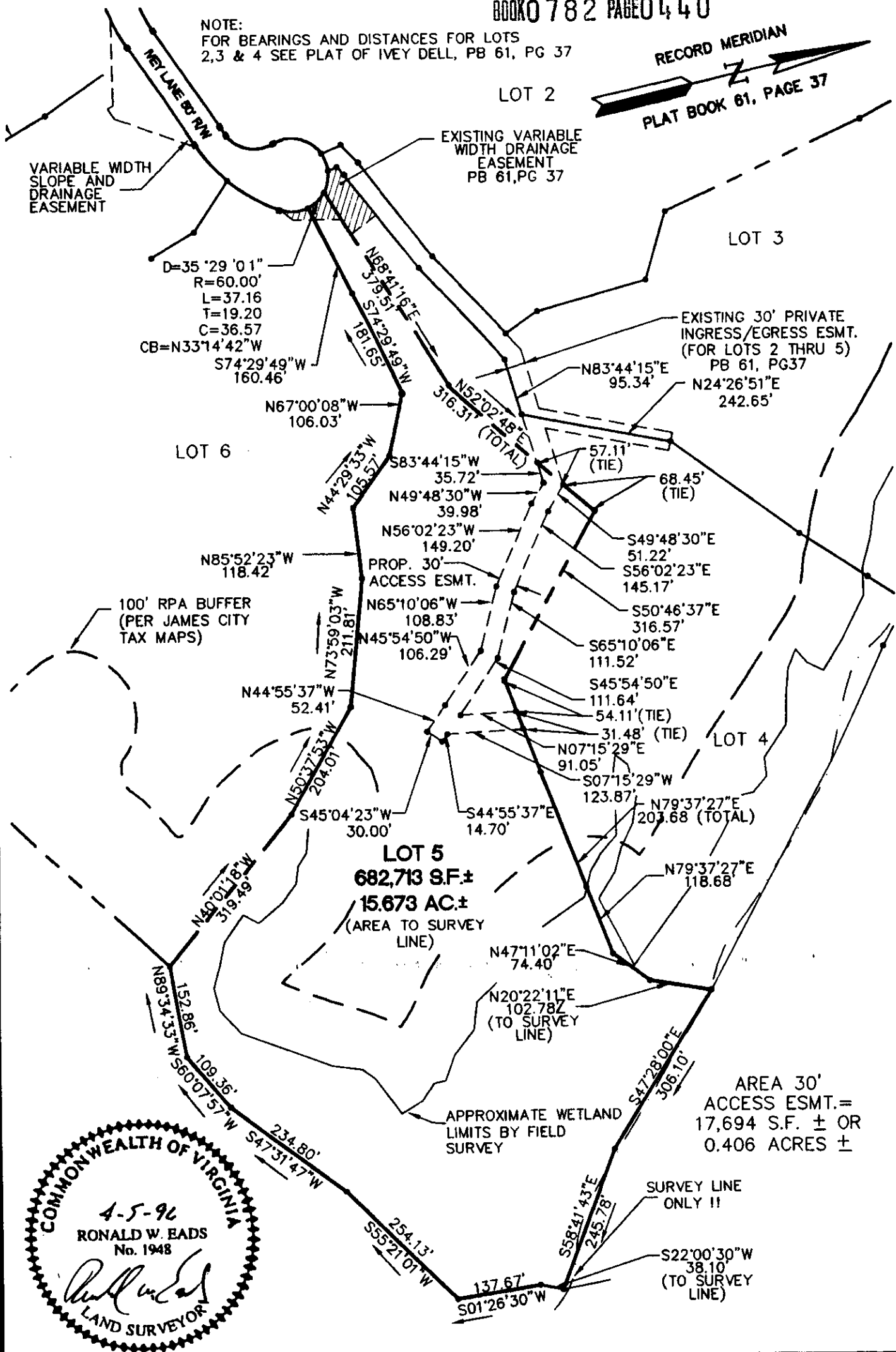
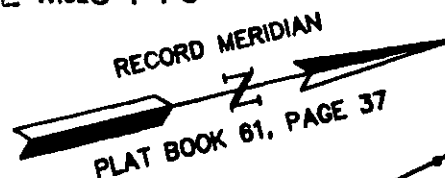


NOTE:
FOR BEARINGS AND DISTANCES FOR LOTS
2,3 & 4 SEE PLAT OF IVEY DELL, PB 61, PG 37



64.10.96-14:30 569404PL

AES Consulting Engineers Engineers, Surveyors, Planners Williamsburg, Virginia

PLAT SHOWING EASEMENT FOR DRAINFIELD ACCESS ACROSS LOT 5 TO LOT 4, IVEY DELL

STONEHOUSE DISTRICT JAMES CITY COUNTY VIRGINIA

Scale: 1" = 200' Ref: PLAT BOOK 61, PAGE 37 Date: 4/5/96 Job No: 5694