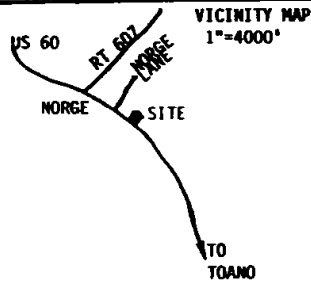


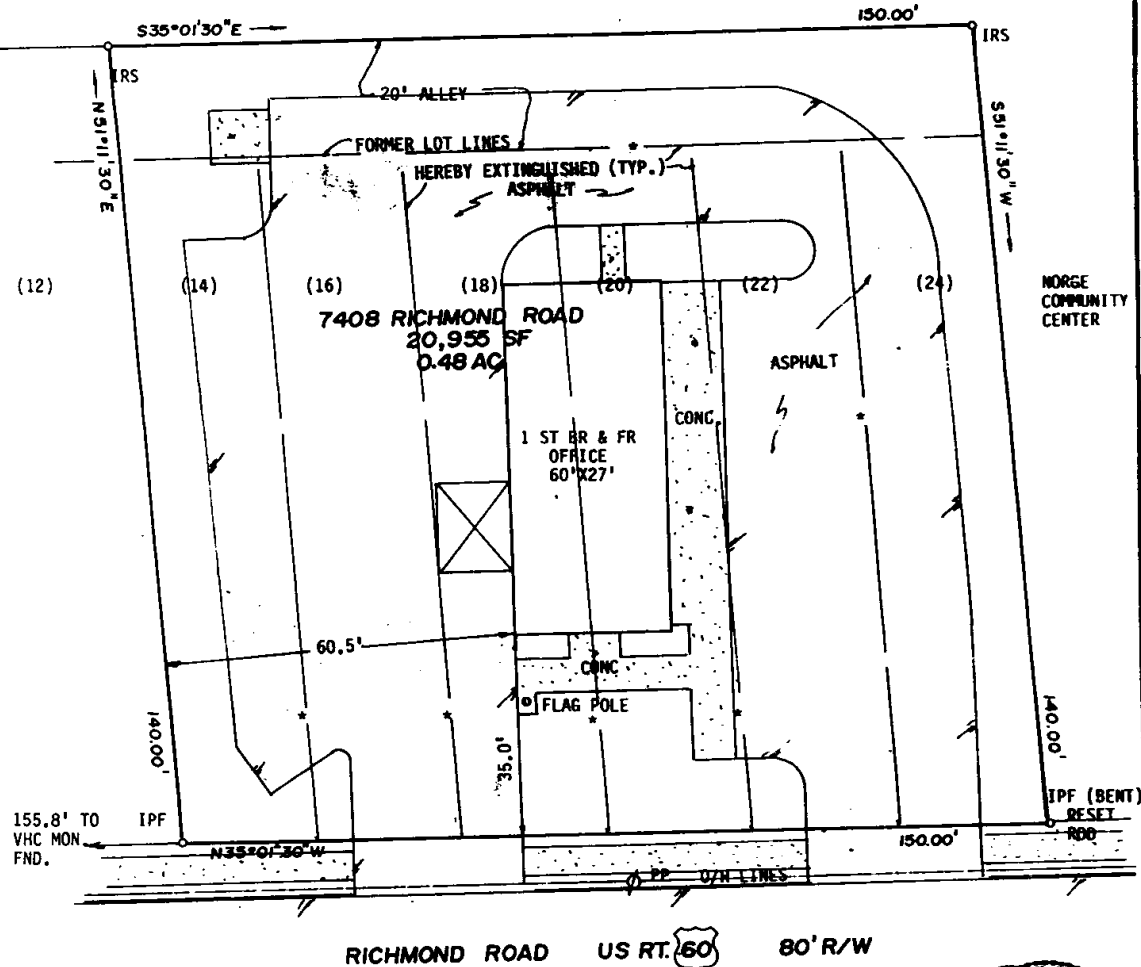
NOTES:

LOT NUMBERS SHOWN (#) ARE OF BLOCK "D",
NORVALIA, PB 1, PG 12.

REFERENCE: DB 150, PG 23.
DB 595, PG 690.



(11) (13) (15) (17) (19) (21) (23)



NOTE: * DENOTES FORMER LOT & ALLEY LINES
TO BE EXTINGUISHED BY THIS PLAT.

L. V. WOODSON & ASSOCIATES, INC.		ENGINEERS, SURVEYORS & PLANNERS, P. O. BOX 633		WILLIAMSBURG, VIRGINIA 23185	
LEGEND * - IP - IRON PIN, □ - MON - MONUMENT, ——— PROPERTY LINE, - - - CENTERLINE, - - - - EASEMENT LINE					
BOUNDARY LINE ADJUSTMENT AND LOT LINE EXTINGUISHMENT					
LOTS 14, 16, 18, 20, 22, 24 & A PORTION OF A 20' ALLEY, BLOCK "D", NORVALIA					
JAMES CITY COUNTY, VIRGINIA					
SCALE: 1"=20'	REF: NOTED	CLOSURE	J. O. 6316	DATE AUGUST 4, 1995	AREA 0.48 AC

45