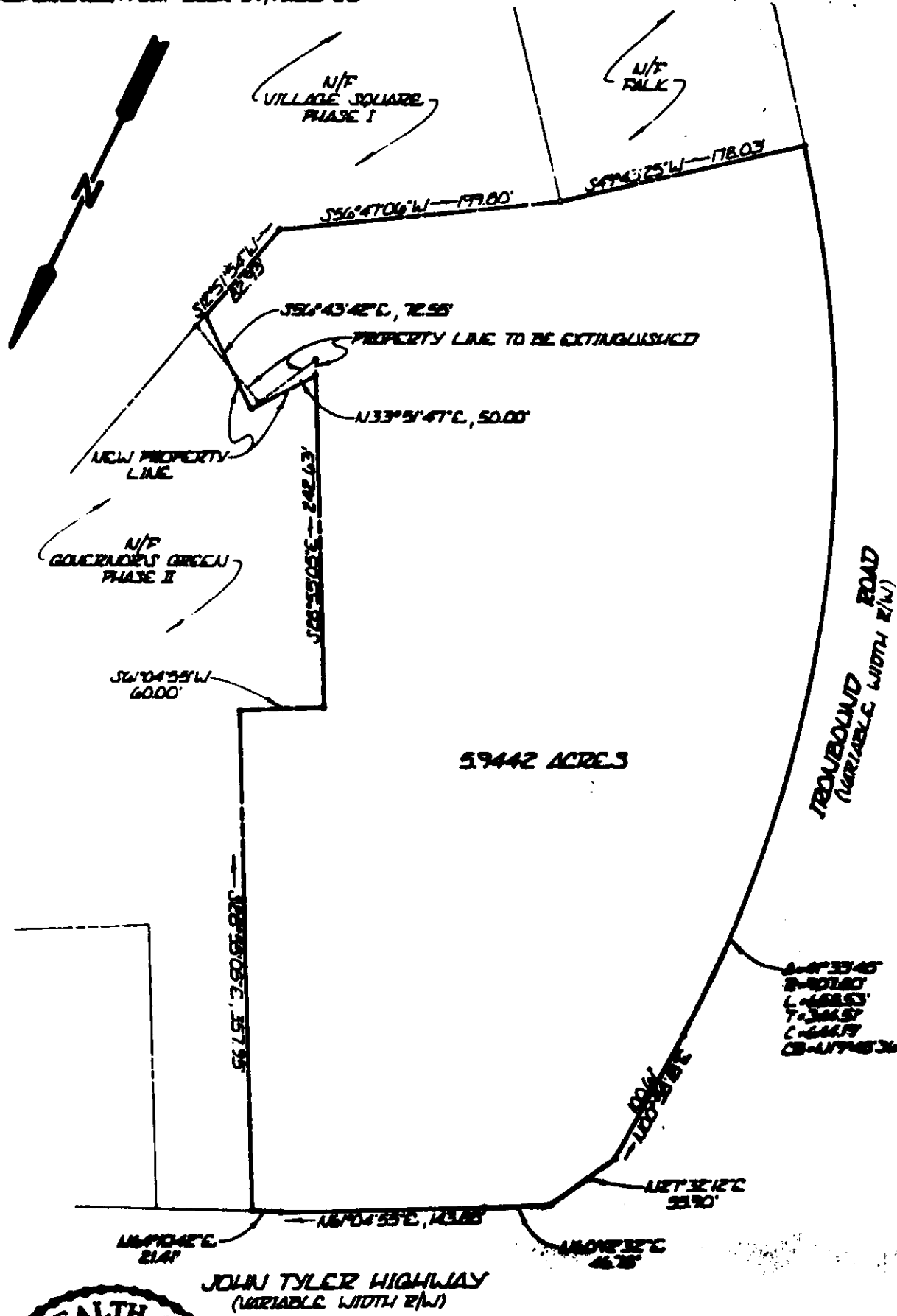


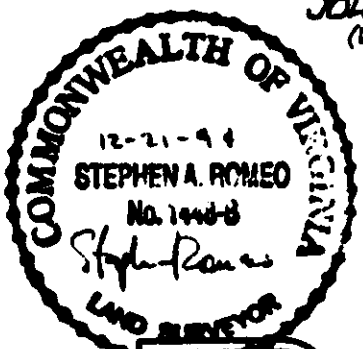
REFERENCE: PLAT BOOK 59, PAGE 25



59442 ACRES

TROUBOUND ROAD
(VARIABLE WIDTH R/W)

JOHN TYLER HIGHWAY
(VARIABLE WIDTH R/W)



**BOUNDARY LINE ADJUSTMENT
PHASE I
GOVERNEUR'S GREEN**
 JAMES CITY COUNTY VIRGINIA
 DATE: DECEMBER 13, 1994 SCALE: 1"=100'

Langley and McDonald, P.C.

Engineers - Surveyors - Planners
Landscape Architects - Environmental Consultants

