

BOOK 0710 PAGE 0371

RECORD NORTH
N

N OR F
J.R. CHISMAN
DEVELOPMENT COMPANY
T.M. (46-1)(1-2C)

NATURAL OPEN
SPACE EASEMENT
55,148 S.F.± OR 1.266 AC.±

N 43° 45' 41" W → 600.00'

WILLIAMSBURG
COMMUNITY CHAPEL
15.2 ACRES±

TAX PARCEL: (46-1)(1-2A)

ADDRESS: #3000 JOHN TYLER HIGHWAY

N OR F
J.R. CHISMAN
DEVELOPMENT COMPANY
T.M. (46-1)(1-2C)

N OR F
SEVENTH DAY
ADVENTIST CHURCH
T.M. (46-1)(1-2B)

1089.00'
S 46° 14' 19" W

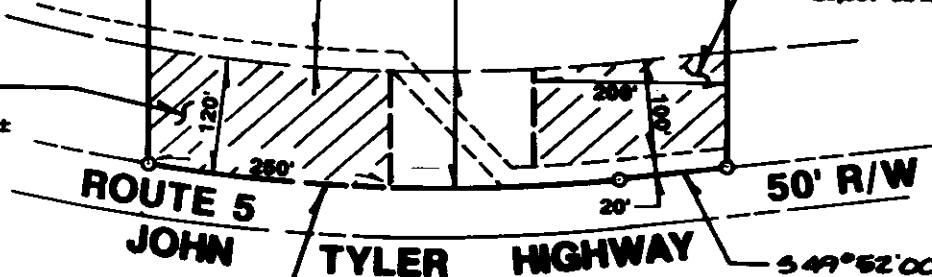
1088.55'
N 46° 14' 19" E

EXISTING 20'
DRAINAGE & UTILITY
EASEMENT

EXISTING 120'
GREENBELT BUFFER

NATURAL OPEN
SPACE EASEMENT
28,897 S.F.± OR 0.661 AC.±

NATURAL OPEN
SPACE EASEMENT
30,145 S.F.± OR 0.692 AC.±

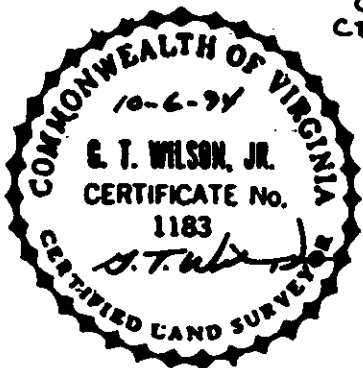


Δ=14°53'54"
R=1985.00'
L=490.15'
T=246.46'
C=488.77'
CB=S 42°25'03" E

549°52'00" E
112.00'

50' R/W

ROUTE 5
JOHN TYLER HIGHWAY



TOTAL AREA OF NATURAL
OPEN SPACE EASEMENT
106,382 S.F.±
2.419 ACRES±

AES a professional corporation
Engineers, Surveyors, Planners

5248 Olde Towne Road, Suite 1
Williamsburg, Virginia 23188
Ph. (804)-253-0040, Fax (804)-220-8994

**PLAT SHOWING EASEMENT FOR NATURAL OPEN SPACE
OWNED BY WILLIAMSBURG COMMUNITY CHAPEL
FOR CONVEYANCE TO THE COUNTY OF JAMES CITY, VIRGINIA**