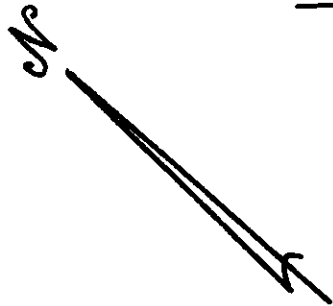


THIS PLAT IS BASED ON A PRIOR SURVEY BY G.T. WILSON, JR. DATED 8/9/91, AND DOES NOT REPRESENT A RESURVEY OF THE BOUNDARY.

LOT 18
(47-3)(2-18)
GEORGE K. MOURREDES, JR.
AND ELLEN P. MOURREDES

LOT 19
(47-3)(2-19)
BETTY JEAN SIMMONS

LOT 20
(47-3)(2-20)
BETTY JEAN SIMMONS

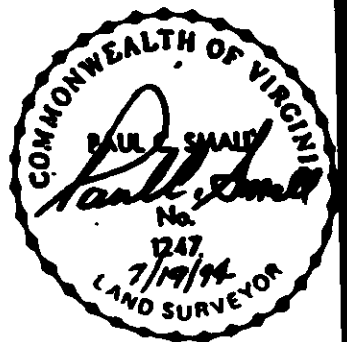
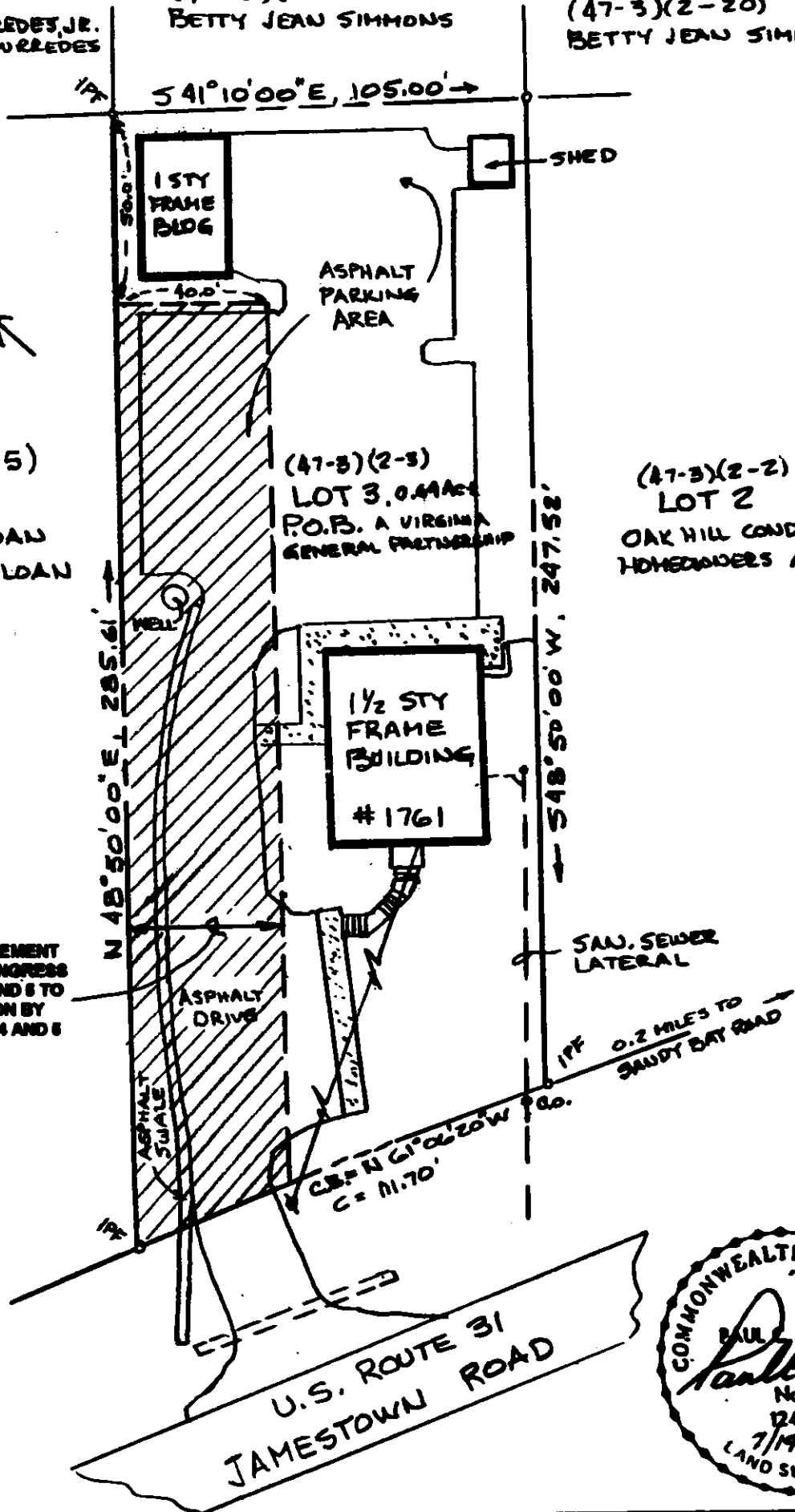


(47-3)(2-4 & 5)
LOTS 4 & 5
MICHAEL D. SLOAN
AND PEGGY A. SLOAN

(47-3)(2-3)
LOT 3, 0.44 AC
P.O.B. A VIRGINIA
GENERAL PARTNERSHIP

(47-3)(2-2)
LOT 2
OAK HILL CONDOMINIUM
HOMEOWNERS ASSN.

46' WIDE PERMANENT EASEMENT
ON AND OVER LOT 3 FOR INGRESS
AND EGRESS TO LOTS 4 AND 5
TO BE MAINTAINED IN COMMON BY
THE OWNERS OF LOTS 3, 4 AND 5
IN PERPETUITY.



Consulting Engineers

Engineers, Surveyors, Planners

Williamsburg, Virginia

**PLAT OF EASEMENT
FOR THE BENEFIT OF LOTS 4 AND 5
LOCATED ON LOT 3, FRANK ARMISTEAD SUBDIVISION**

BERKELEY DISTRICT

JAMES CITY COUNTY

VIRGINIA

Scale: 1"=40'

Ref.: P.B. 22; PG. 26

Date: 7/19/94

Job No.: 3595-3