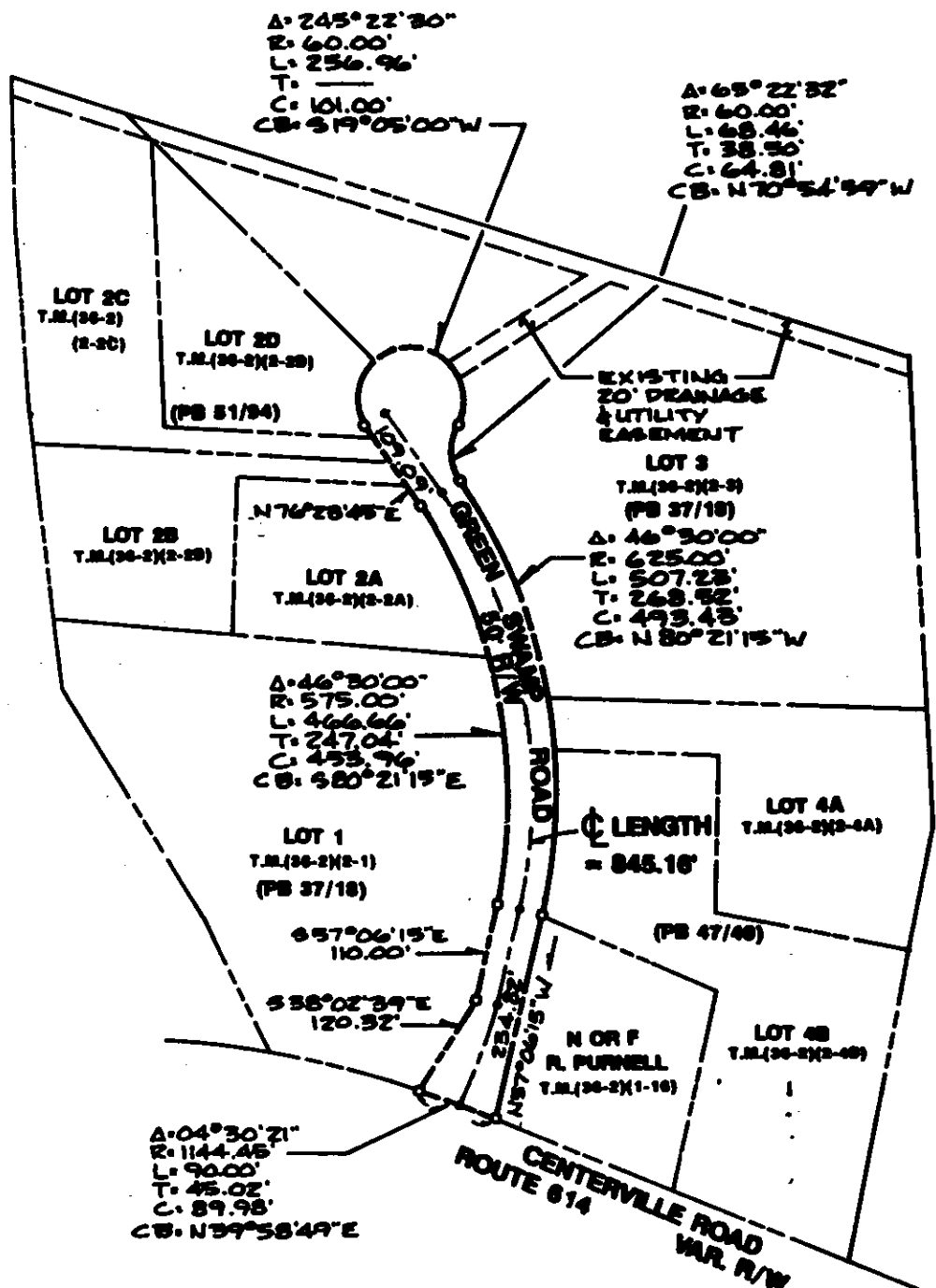


RECORD MERIDIAN

PB 37/18



AREA OF GREEN SWAMP ROAD RIGHT-OF-WAY = 1.171 ACRES±

I CERTIFY THAT, TO THE BEST OF MY KNOWLEDGE & BELIEF, THIS PLAT IS COMPLETE & CORRECT; THAT IT CONFORMS TO THE REQUIREMENTS OF JAMES CITY COUNTY; AND THAT IT COMPLIES WITH THE STANDARDS OF THE STATE BOARD OF ARCHITECTS, PROFESSIONAL ENGINEERS, LAND SURVEYORS & CERTIFIED LANDSCAPE ARCHITECTS.



Consulting Engineers

Engineers, Surveyors, Planners

Williamsburg, Virginia

PLAT FOR DEDICATION OF GREEN SWAMP ROAD TO THE VIRGINIA DEPARTMENT OF TRANSPORTATION

BERKELEY DISTRICT

JAMES CITY COUNTY

VIRGINIA

Scale: 1" = 200'

Ref.: PB 37/18, PB 47/49, PB 51/94

Date: 11/29/93

Job No.: 3877