

VIRGINIA: IN THE CIRCUIT COURT FOR THE CITY OF WILLIAMSBURG AND  
COUNTY OF JAMES CITY

IN THE MATTER OF DISPUTED BOUNDARY LINE  
BETWEEN NEW KENT AND JAMES CITY COUNTIES.

COMMISSIONERS REPORT

Pursuant to a decree made and entered in this cause on the 14th. day of November, 1957, whereby the undersigned Commissioners were appointed to meet with Commissioners to be appointed from New Kent County, to ascertain and establish the true line between New Kent and James City Counties at a point on the westerly side of U. S. Highway No. 168 to the headwaters of Diascund Creek in accordance with the statutes made and provided for the settlement of County boundaries, your Commissioners, A. D. Slater, S. S. Hazelwood and John P. Barnes, met with J. A. Davis, W. F. Woodward and W. W. Richardson, Jr., Commissioners appointed by the Circuit Court of New Kent County, Virginia, and proceeded to determine the true line in accordance with said decree.

Your Commissioners, A. D. Slater, S. S. Hazelwood and John P. Barnes, along with J. A. Davis, W. F. Woodward and W. W. Richardson, Jr., Commissioners for New Kent County, started at a point in the center line of Route No. 168 approximately 710 feet from its intersection with Route No. 642, and from that point proceeded in a straight line to the headwaters of Weir Creek on the East and the headwaters of Diascund Creek on the West. This point was agreed to be the true boundary line between New Kent and James City Counties, and your Commissioners A. D. Slater, S. S. Hazelwood and John P. Barnes, along with J. A. Davis, W. F. Woodward and W. W. Richardson, Jr., Commissioners of New Kent County, agreed to have W. F. Woodward meet with Bernard V. Mrock, Civil Engineer and Land Surveyor to survey said line as above indicated.

W. F. Woodward, one of the Commissioners of New Kent County, met with Bernard V. Mrock, Civil Engineer, who proceeded to survey out said line and install permanent concrete markers on

March 13, 19-8, as agreed by the Commissioners.

In accordance with the decree entered in this cause, and with the statutes made and provided your Commissioners report that said line was run as agreed by all the Commissioners of New Kent and James City Counties beginning at a concrete monument in the center line of Route No. 168, 710 feet from it's intersection with Route No. 642; thence N. 84° 37' E. a distance of 89.97 feet to a concrete monument; thence N. 84° 37' E. a distance of 1,293.85 feet to a concrete monument; thence N. 84° 37' E. a distance of 1,495.27 feet to a concrete monument at head of Weir Creek; starting again at the first mentioned concrete monument proceeding S. 72° 19' W. a distance of 91.25 feet to a concrete monument; thence S. 72° 19' W. a distance of 1,467.59 feet to a concrete monument at a point in Barnes Swamp, the headwaters of Diascund Creek.

Your Commissioners return to this Honorable Court the plat of said line as run by Bernard V. Mrock, Civil Engineer, and land surveyor, along with a bill for his services in said survey.

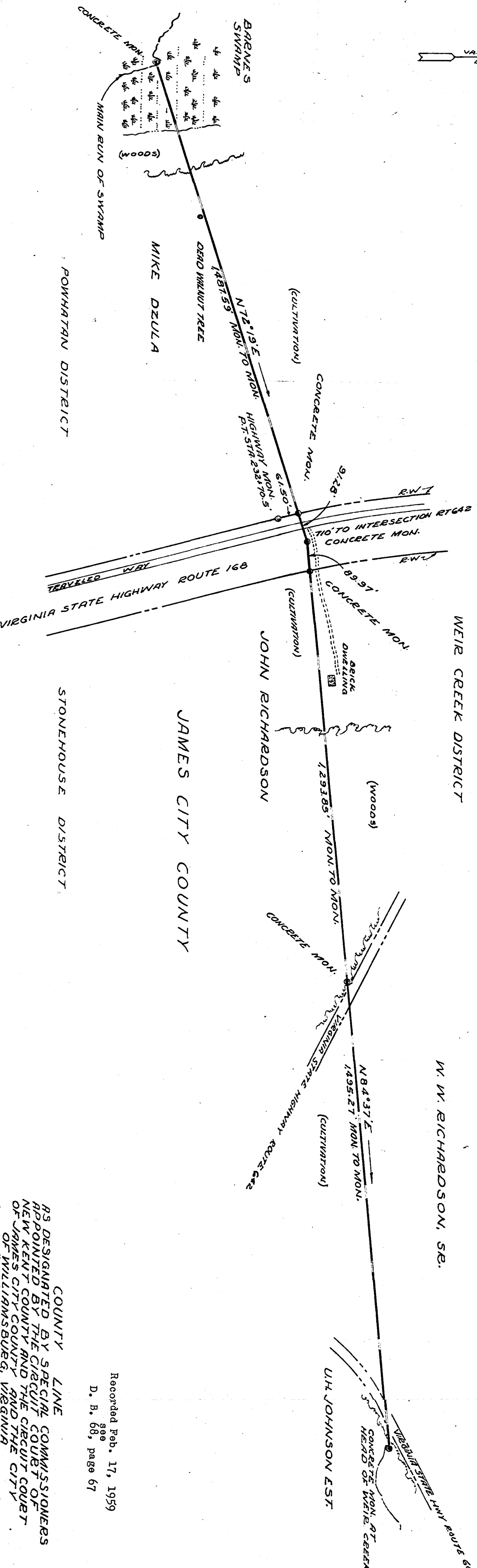
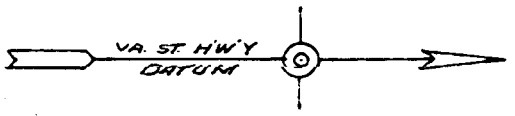
All of which is respectfully submitted this 10<sup>th</sup> day of January, 1959. Hours spent determining line--5.

A. J. Slater

S. S. Hazelwood

J. F. James

*2 17 57*



BERNARD V. BROCK & ASSOCIATES  
 CIVIL ENGINEERS - LAND SURVEYORS  
 PROVIDENCE FORGE, VIRGINIA

POWHATAN DISTRICT

STONEHOUSE DISTRICT

WEIR CREEK DISTRICT

NEW KENT COUNTY

JAMES CITY COUNTY

W. W. RICHARDSON, SR.

U.H. JOHNSON EST.

COUNTY LINE  
 AS DESIGNATED BY SPECIAL COMMISSIONERS  
 APPOINTED BY THE CIRCUIT COURT OF  
 NEW KENT COUNTY AND THE CIRCUIT COURT  
 OF JAMES CITY COUNTY AND THE CITY  
 OF WILLIAMSBURG, VIRGINIA  
 MARCH 13, 1958  
 SCALE 1"=200'

Recorded Feb. 17, 1959  
 see  
 D. B. 68, page 67