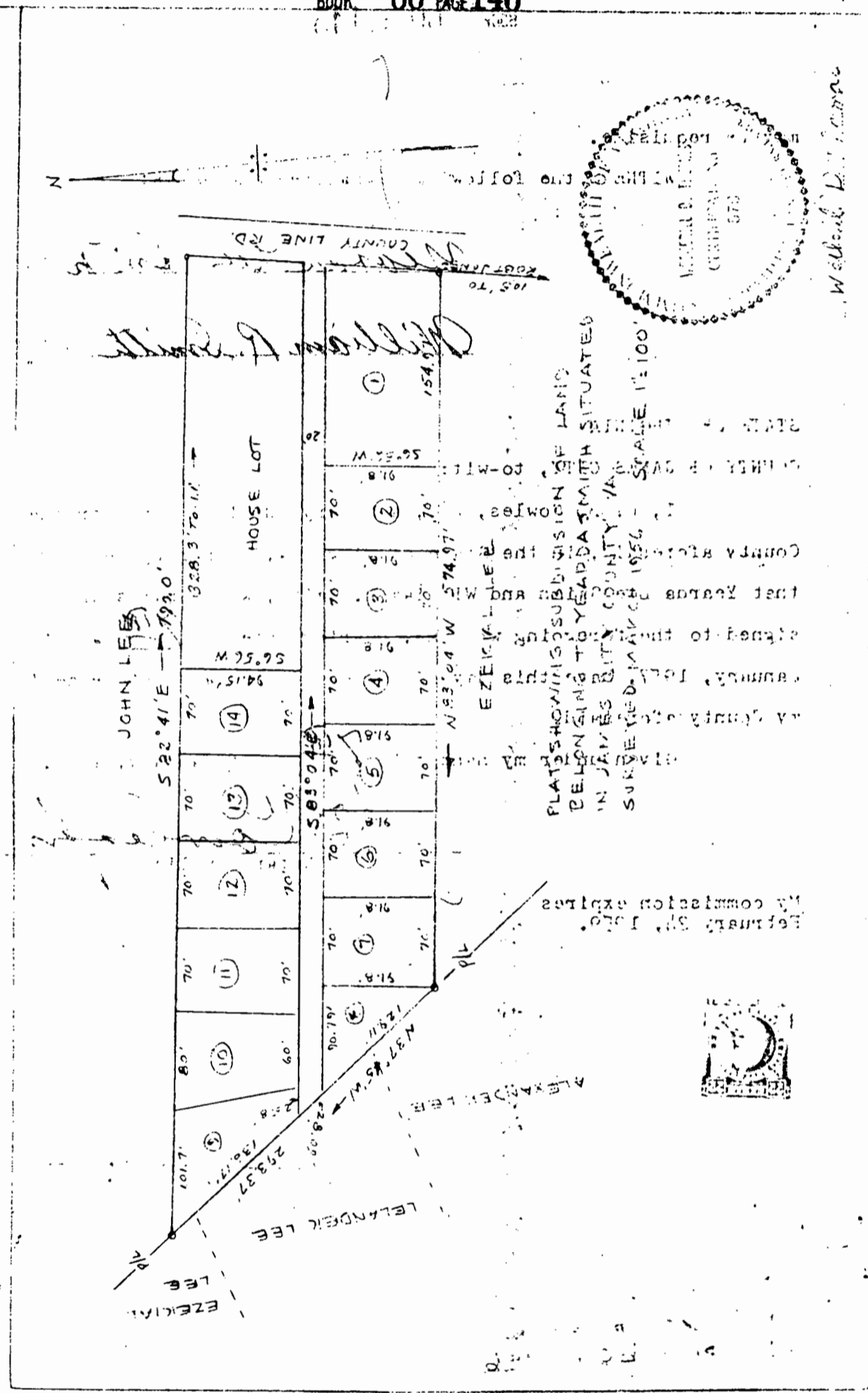


FOR VACATION OF LOTS 2 & 3 SUBDIVISION OF LAND OF Y. SMITH
 SEE ORDINANCE #86 IN DB161 P399
 6/20/75



PLAT SHOWING SUBDIVISION OF LAND BELONGING TO YEAPDA SMITH SITUATED IN JAMES BURY COUNTY, VA. SURVEYED MAY 1956. SCALE 1" = 100'

