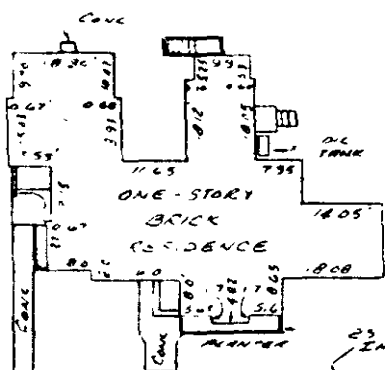
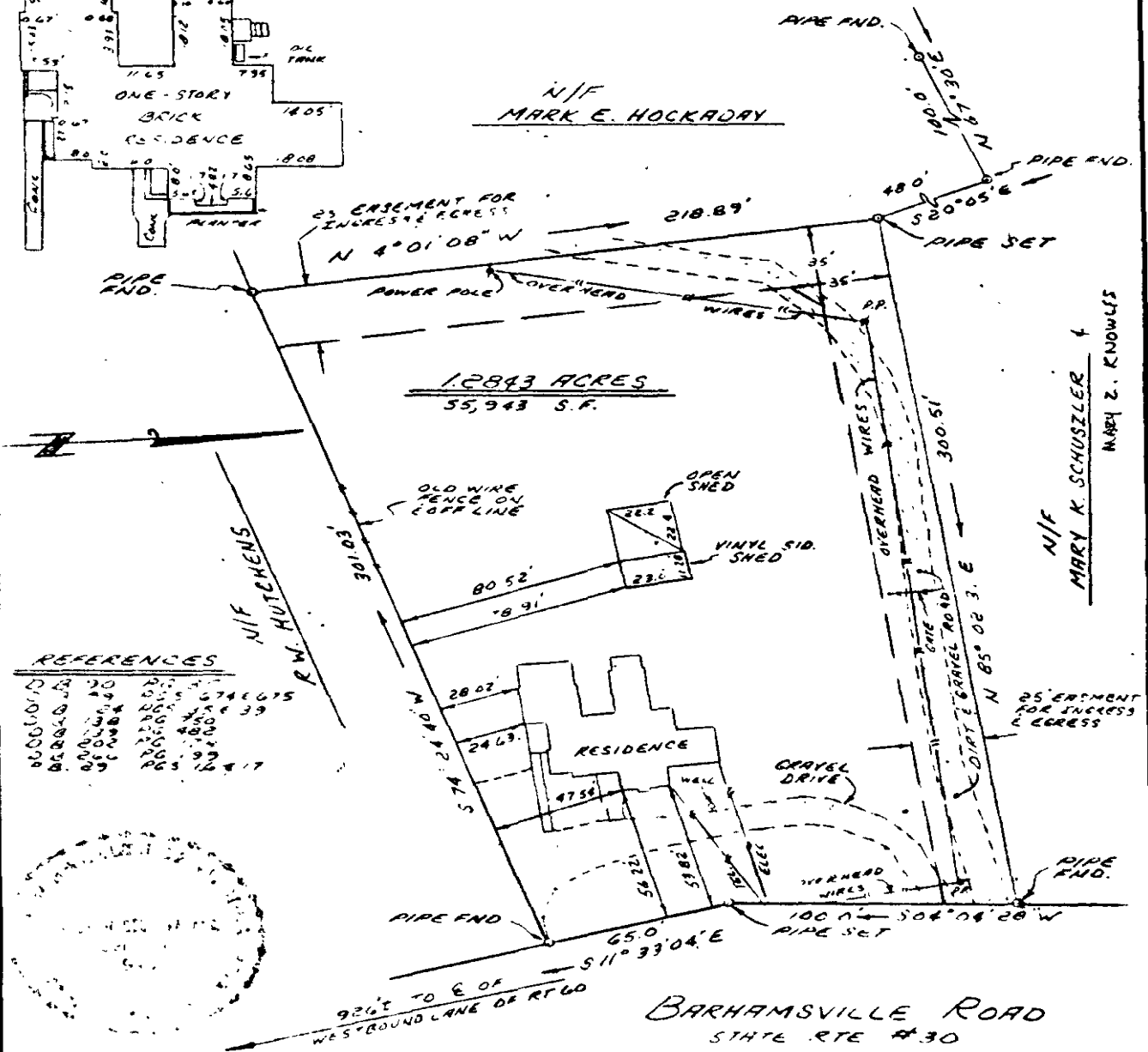


RESIDENCE DETAIL



NOTE: THIS PROPERTY IS NOT IN THE H.U.D. DEFINED FLOOD HAZARD ZONE. (ZONE-C) COMM. NO. 510201-0001-A



REFERENCES

| | | |
|---------|--------|--------|
| 6000101 | PG 30 | PG 31 |
| 6000102 | PG 32 | PG 33 |
| 6000103 | PG 34 | PG 35 |
| 6000104 | PG 36 | PG 37 |
| 6000105 | PG 38 | PG 39 |
| 6000106 | PG 40 | PG 41 |
| 6000107 | PG 42 | PG 43 |
| 6000108 | PG 44 | PG 45 |
| 6000109 | PG 46 | PG 47 |
| 6000110 | PG 48 | PG 49 |
| 6000111 | PG 50 | PG 51 |
| 6000112 | PG 52 | PG 53 |
| 6000113 | PG 54 | PG 55 |
| 6000114 | PG 56 | PG 57 |
| 6000115 | PG 58 | PG 59 |
| 6000116 | PG 60 | PG 61 |
| 6000117 | PG 62 | PG 63 |
| 6000118 | PG 64 | PG 65 |
| 6000119 | PG 66 | PG 67 |
| 6000120 | PG 68 | PG 69 |
| 6000121 | PG 70 | PG 71 |
| 6000122 | PG 72 | PG 73 |
| 6000123 | PG 74 | PG 75 |
| 6000124 | PG 76 | PG 77 |
| 6000125 | PG 78 | PG 79 |
| 6000126 | PG 80 | PG 81 |
| 6000127 | PG 82 | PG 83 |
| 6000128 | PG 84 | PG 85 |
| 6000129 | PG 86 | PG 87 |
| 6000130 | PG 88 | PG 89 |
| 6000131 | PG 90 | PG 91 |
| 6000132 | PG 92 | PG 93 |
| 6000133 | PG 94 | PG 95 |
| 6000134 | PG 96 | PG 97 |
| 6000135 | PG 98 | PG 99 |
| 6000136 | PG 100 | PG 101 |



TO ALL PARTIES INTERESTED IN TITLE TO PREMISES SURVEYED I HEREBY CERTIFY THAT ON JULY 25, 1989 I SURVEYED THE PROPERTY SHOWN ON THIS PLAT, AND THAT THE TITLE LINES AND THE WALLS OF THE BUILDINGS ARE AS SHOWN ON THIS PLAT.

THE BUILDINGS STAND STRICTLY WITHIN THE TITLE LINES AND THERE ARE NO ENCROACHMENTS OF OTHER BUILDINGS ON THE PROPERTY EXCEPT AS SHOWN.

Michael E. Evans
 CERTIFIED LAND SURVEYOR

| | |
|--|--------------------|
| PLAT OF THE PROPERTY OF MICHAEL E. EVANS | |
| PART OF LAND CONTAINING 1.2843 ACRES LOCATED ON BARHAMSVILLE ROAD (VA STATE RTE 30) JAMES CITY COUNTY, VIRGINIA | |
| BECOUVARAKIS AND ASSOC. LAND SURVEYING HAMPTON, VIRGINIA | |
| Scale: 1" = 50' | F.B. 207 Pg. 42-44 |
| Date: JULY 25, 1989 | |