

ROOM 427 PAGE 393

CURVE DATA						
NO	RADIUS	DELTA	TANGENT	ARC	CHORD	CHORD BEARING
1	176.00'	47°35'26"	77.61'	146.19'	142.02'	S 56°57'24" E
2	134.00'	47°35'26"	59.09'	111.30'	108.13'	N 56°57'24" W

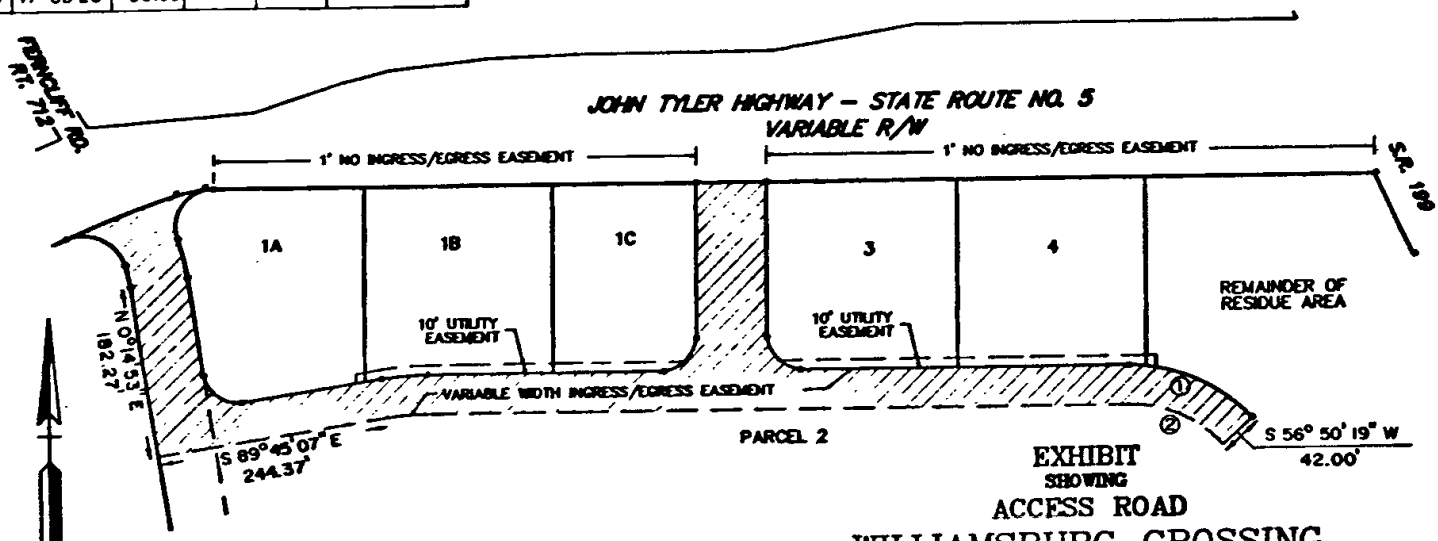


EXHIBIT SHOWING ACCESS ROAD WILLIAMSBURG CROSSING (REF. P.B. 49, P. 69) JAMESTOWN DISTRICT JAMES CITY COUNTY, VIRGINIA SCALE 1" = 120' DATE OCTOBER 24, 1968

0 30 60 120 240 360 feet
 GRAPHIC SCALE

EXCEPT WHERE OTHERWISE SHOWN, THE LIMITS OF THIS ACCESS ROAD EASEMENT ARE THE SAME AS THOSE DELINEATED FOR THE "VARIABLE WIDTH INGRESS/EGRESS EASEMENT" ON PLAT ENTITLED SUBDIVISION OF PARCELS 1, 2 AND A PORTION OF THE RESIDUE AREA, WILLIAMSBURG CROSSING RECORDED AT PLAT BOOK 49, PAGE 69.

VIRGINIA: City of Williamsburg and County of James City, to Wit: I, the Clerk's office of the Circuit Court of the City of Williamsburg and County of James City, do hereby certify that this plat was presented with certificate attached and recorded at the office of the Clerk on this day of March, 1968.

by Helene S. Ward, Clerk
 Deputy Clerk