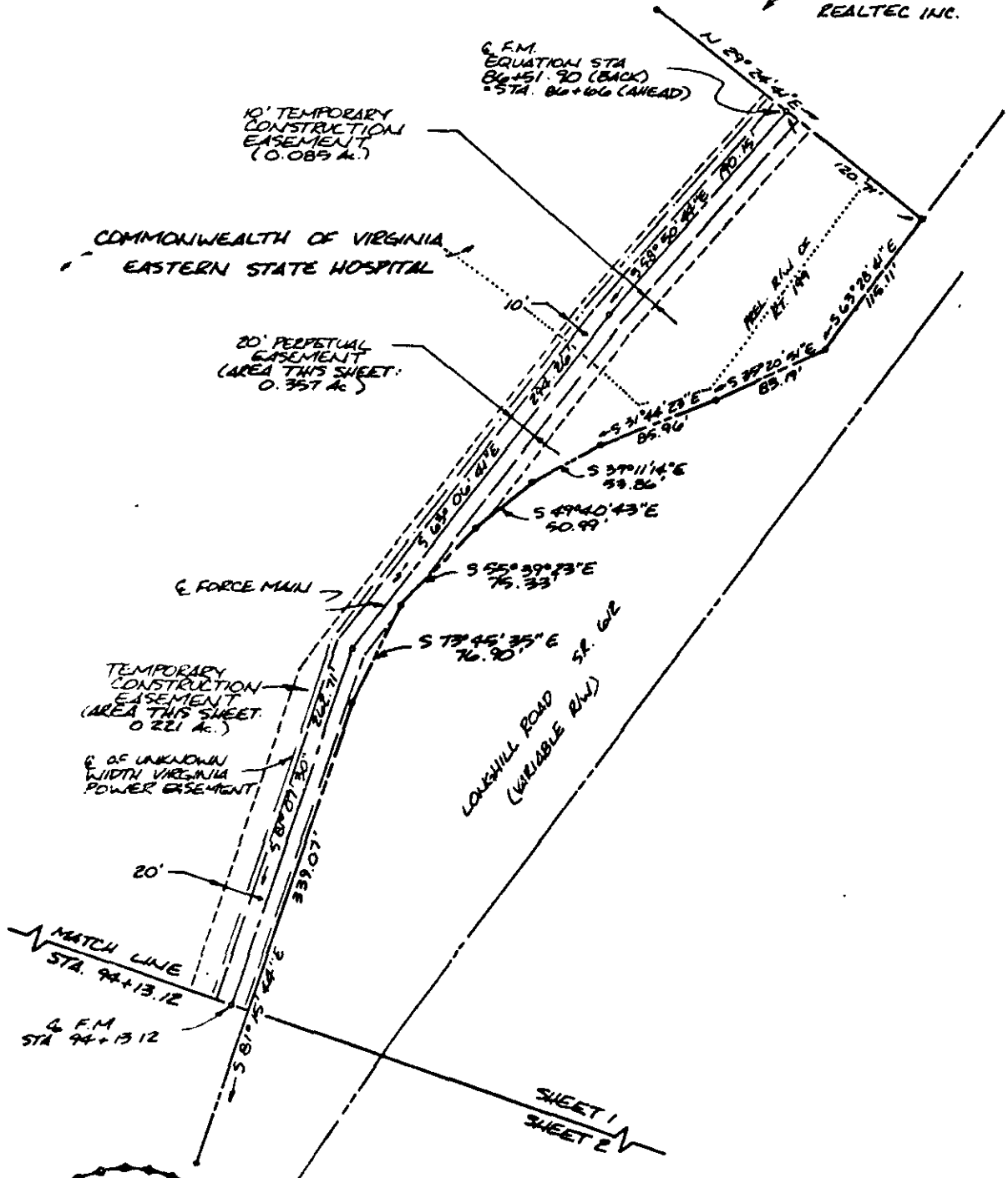


WILLIAMSBURG WEST TRACT
REALTEC INC.



COMMONWEALTH OF VIRGINIA
PAUL C. SMALL
No. 1247
LAND SURVEYOR

THIS PLAT OF EASEMENT IS BASED ON VDOT DRAWINGS FOR LONGHILL ROAD, S.R. 612 (V.D.O.T. PROJ. NO. 042-047-105, C-501, SHEET 4). THIS PLAT OF EASEMENT DOES NOT REPRESENT AN ACTUAL FIELD SURVEY

REF.: DB 18/P6 346

SHEET 1 OF 2

AES, a professional corporation		engineers, surveyors, planners		Williamsburg, Virginia	
PLAT SHOWING EASEMENT FOR HAMPTON ROADS SANITATION DISTRICT LONGHILL ROAD INTERCEPTOR FORCE MAIN FROM COMMONWEALTH OF VIRGINIA EASTERN STATE HOSPITAL					
JAMES CITY COUNTY				VIRGINIA	
Scale: 1" = 100'	Ref.:	Date: 6/10/87	Job No. 6818		