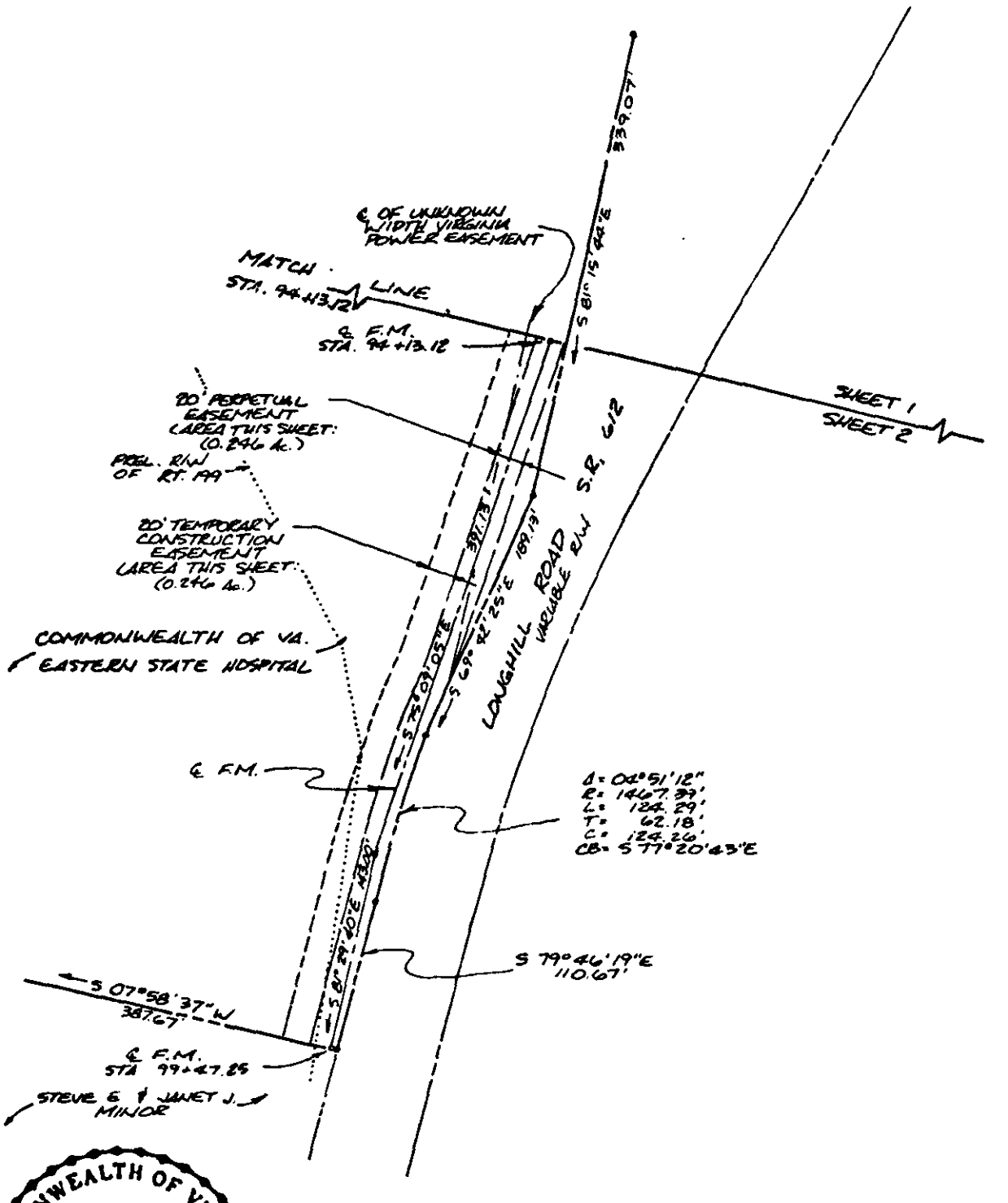


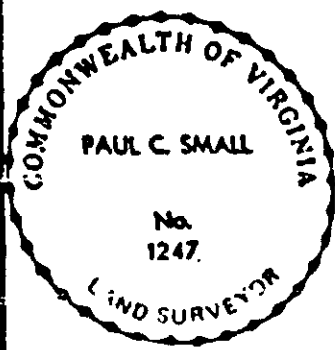
EASTERN STATE

BOOK 383 PAGE 450



COMMONWEALTH OF VA.
EASTERN STATE HOSPITAL

$\Delta = 00^{\circ}51'12''$
 $R = 1467.89'$
 $L = 124.29'$
 $T = 62.18'$
 $C = 124.26'$
 $CB = S 77^{\circ}20'43''E$



THIS PLAT OF EASEMENT IS BASED
 ON V.P.O.T. DRAWINGS FOR
 LONGHILL ROAD, S.R. 612
 (V.P.O.T. PROJ. NO. 0612-047-105, C-501
 SHEET 4.)
 THIS PLAT OF EASEMENT DOES NOT
 REPRESENT AN ACTUAL FIELD SURVEY.

REF: DB 18/76 346

SHEET 2 OF 2

AES, a professional corporation engineers, surveyors, planners Williamsburg, Virginia

PLAT SHOWING EASEMENT FOR
HAMPTON ROADS SANITATION DISTRICT
 LONGHILL ROAD INTERCEPTOR FORCE MAIN
 FROM
COMMONWEALTH OF VIRGINIA
EASTERN STATE HOSPITAL

JAMES CITY COUNTY

VIRGINIA

Scale: 1" = 100'

Ref.:

Date: 6/10/87

Job No. 6818