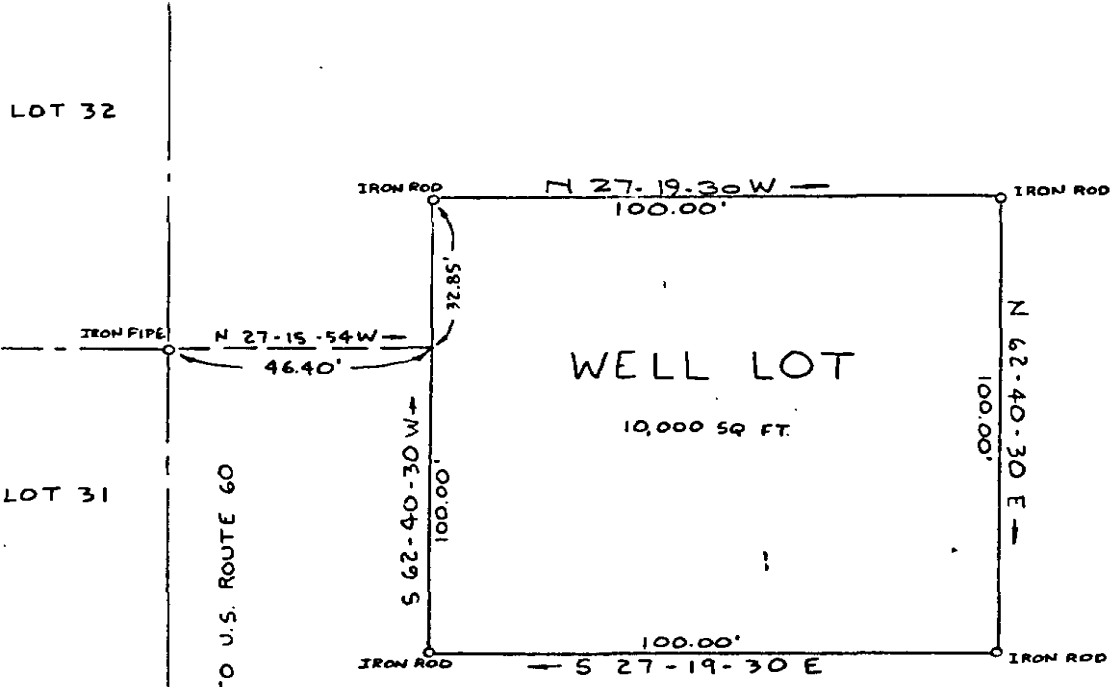


RECORD MERIDIAN

LOT 32

LOT 31

TO U.S. ROUTE 60



WELL LOT  
10,000 SQ. FT.

COUNTY SCHOOL BOARD  
OF JAMES CITY COUNTY  
AND THE SCHOOL BOARD  
OF THE CITY OF WILLIAMSBURG  
DB 104/378  
PB 23/17



AES, a professional corporation engineers, surveyors, planners Williamsburg, Virginia

PLAT OF  
WELL LOT LOCATED AT NORGE ELEMENTARY SCHOOL  
WEST OF U.S. ROUTE 60

JAMES CITY COUNTY TO BE CONVEYED TO JAMES CITY SERVICE AUTHORITY VIRGINIA

Scale: 1"=30

Ref.: NOTED & D.B. 140/260

Date: 6/11/86

Job No. 5430-27C