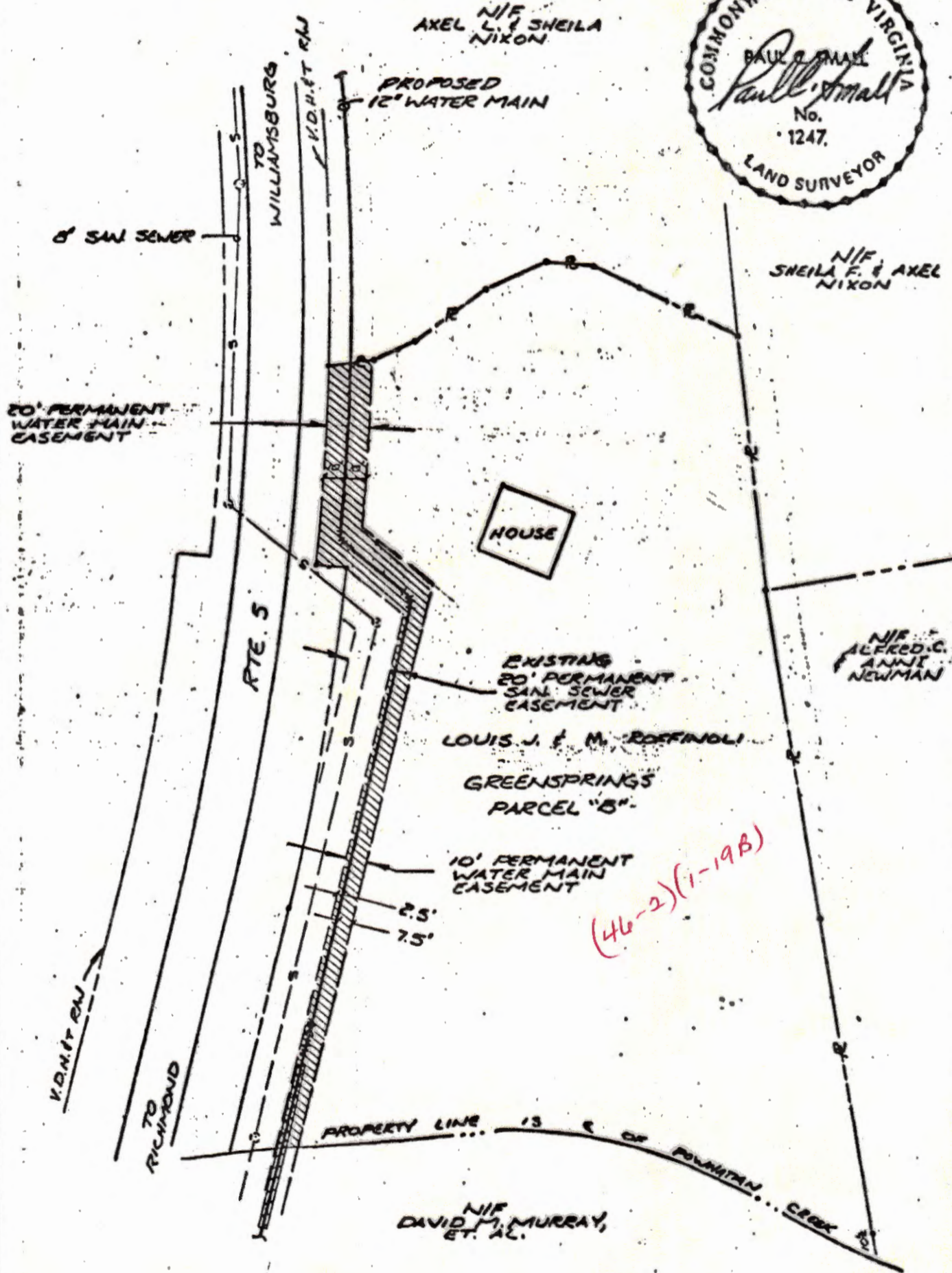


NOTE: THIS PLAT WAS PREPARED FROM AVAILABLE INFORMATION AND CONTROLLED SURVEYS. PROPERTY LINES, UNLESS SPECIFICALLY CALLED OUT ON THIS PLAT WERE NOT VERIFIED BY ACTUAL FIELD SURVEY.
EASEMENT AREA: 5150 SQ. FT. ±
0.12 AC. ±



(46-2)(1-198)

AES, a professional corporation architects, engineers, surveyors, and planners Williamsburg, Virginia

DRAINAGE & UTILITIES EASEMENT JAMES CITY COUNTY WATER TRANSMISSION MAINS C.I.P.

FOR CONVEYANCE TO: JAMES CITY SERVICE AUTHORITY

JAMES CITY COUNTY FROM: LOUIS J. & M. ROFFINOLI VIRGINIA

Scale: 1" :: 60' Ref.: DB 205 / 799 Date: FEB., 1983 Job No.: 5263

462010019B